

Excellent Integrated System Limited

Stocking Distributor

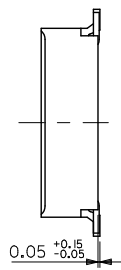
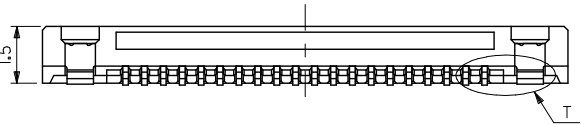
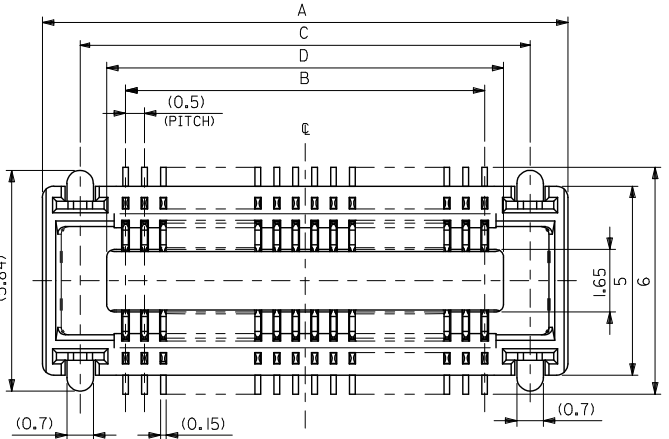
Click to view price, real time Inventory, Delivery & Lifecycle Information:

[Molex Connector Corporation](#)
[0543630278](#)

For any questions, you can email us directly:

sales@integrated-circuit.com

10 9 8 7 6 5 4 3 2 1



注記
NOTES:

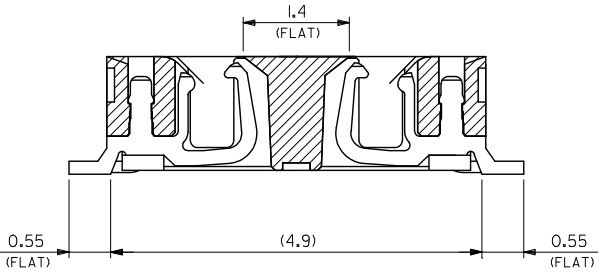
1. 材質
MATERIAL
ハウジング: LCP (液晶ポリマー)、ガラス充填、黒色、UL 94V-0
HOUSING: LCP (LIQUID CRYSTAL POLYMER), GLASS FILLED, BLACK, UL 94V-0
ターミナル: 銅合金 (t=0.15)
TERMINAL: COPPER ALLOY (t=0.15)
ネイル: 銅合金 (t=0.2)
NAIL: COPPER ALLOY (t=0.2)
2. メッキ仕様
PLATING
ターミナル
TERMINAL
接点部: 金メッキ 0.25マイクロメートル以上
CONTACT AREA: GOLD 0.25 MICROMETER MINIMUM
半田付け部: 金メッキ 0.4マイクロメートル以下
SOLDER TAIL AREA: GOLD 0.4 MICROMETER MAXIMUM
下地メッキ: ニッケルメッキ 1.5マイクロメートル以上
UNDER PLATING: NICKEL 1.5 MICROMETER MINIMUM
ネイル
NAIL
ニッケルメッキ 3.0マイクロメートル以上
Ni 3.0 MICROMETER MINIMUM
下地メッキ: ニッケルメッキ 1.0マイクロメートル以上
UNDER PLATING: Ni 1.0 MICROMETER MINIMUM
3. テール平坦度は、0.08ミリメートル以下。テールとネイルを併せた平坦度は、0.1ミリメートル以下。
TAIL COPLANARITY TO BE 0.08 MAXIMUM. TAILS AND NAILS FLATNESS IS 0.1 MILLIMETER MAXIMUM.
4. 嵌合相手: 55299-**** (H=3mm)
MATED CONN.: 55299-**** (H=3mm)
55201-****, 55650-**** (H=2mm)
5. この製品は54363-**01, (インボス梱包品 54363-**08) の姉妹品です。
THIS PRODUCT IS 'LEAD FREE' OF 54363-**01, (EMBOSSED TAPE PKG 54363-**08)

40.5	41.9	39.5	43.9	54363-I678	54363-I671	160	—
35.5	36.9	34.5	38.9	54363-I478	54363-I471	140	○
30.5	31.9	29.5	33.9	54363-I278	54363-I271	120	○
28	29.4	27	31.4	54363-I178	54363-I171	110	○
25.5	26.9	24.5	28.9	54363-I078	54363-I071	100	○
23	24.4	22	26.4	54363-O978	54363-O971	90	—
20.5	21.9	19.5	23.9	54363-O878	54363-O871	80	○
18	19.4	17	21.4	54363-O778	54363-O771	70	○
15.5	16.9	14.5	18.9	54363-O678	54363-O671	60	○
13	14.4	12	16.4	54363-O578	54363-O571	50	○
10.5	11.9	9.5	13.9	54363-O478	54363-O471	40	○
8	9.4	7	11.4	54363-O378	54363-O371	30	○
5.5	6.9	4.5	8.9	54363-O278	54363-O271	20	○
D	C	B	A	インボス梱包品 EMBOSSED TAPE PACKAGING	製品番号 MATERIAL NO.	極数 CIRCUITS	量産対応 AVAILABLE

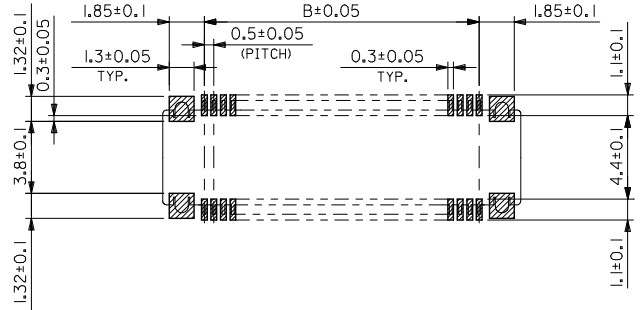
REVISED EC NO: J2016-0601 DRAWN: FURUKAWA 2015/12/08 CHKD: TASHIKAWA 2015/12/08 APPR: MORIKAWA 2015/12/16	GENERAL TOLERANCES (UNLESS SPECIFIED)			DIMENSION STYLE		SCALE	DESIGN UNITS	THIRD ANGLE PROJECTION
	0.25 UNDER	UNDER	± 0.03	MM ONLY		10:1	METRIC	
	0.25 OVER	0.5 UNDER	± 0.05	DRAWN BY DATE		TITLE		
	0.5 OVER	1.0 UNDER	± 0.1	A. IDA 2004/01/06		0.5 PITCH B/B CONN. REC. HOUSING ASSY (H=2.3) WITH NAIL -LEAD FREE-		
	1.0 OVER	10 UNDER	± 0.2	CHECKED BY DATE				
	10 OVER	30 UNDER	± 0.25	H. TAKASE 2004/01/06				
	30 OVER		± 0.3	APPROVED BY DATE				
	ANGULAR	± 3 °		MATERIAL NO.		DOCUMENT NO.		
	DRAFT WHERE APPLICABLE MUST REMAIN WITHIN DIMENSIONS			SIZE	SEE CHART			
				A3	THIS DRAWING CONTAINS INFORMATION THAT IS PROPRIETARY TO MOLEX ELECTRONIC TECHNOLOGIES, LLC AND SHOULD NOT BE USED WITHOUT WRITTEN PERMISSION			
					SD-54363-038		SHEET NO. 1 OF 2	

9 8 7 6 5 4 3 2 1

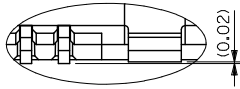
10 9 8 7 6 5 4 3 2 1



製品断面図 (半田付け部、吸着面寸法)
DETAIL FOR SOLDERING AND VACUUM AREA



推奨基板寸法
RECOMMENDED PCB PATTERN LAYOUT
(SCALE:5-1)

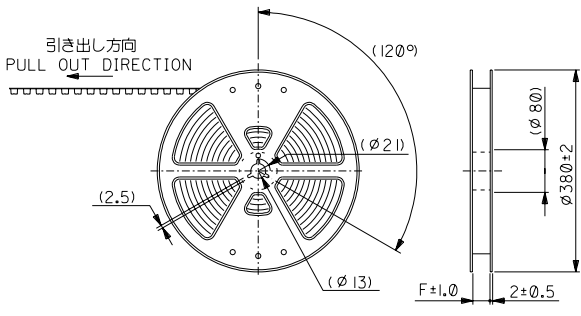


寸詳細
DETAIL T

REVISED EC NO: J2016-0601 DRWN: FURUKAWA 2015/12/08 CHKD: TASHIKAWA 2015/12/08 APPR: KIMORI KAWA 2015/12/16	GENERAL TOLERANCES (UNLESS SPECIFIED)		DIMENSION STYLE		SCALE	DESIGN UNITS	THIRD ANGLE PROJECTION
			MM ONLY		20:1	METRIC	
	0.25 UNDER	UNDER	±0.03	DRAWN BY	DATE	TITLE	
	0.25 OVER	0.5 UNDER	±0.05	A. IDA	2004/01/06	0.5 PITCH B/B CONN. REC. HOUSING ASSY (H=2.3) WITH NAIL -LEAD FREE-	
	0.5 OVER	1.0 UNDER	±0.1	CHECKED BY	DATE	molex DOCUMENT NO. SD-54363-038 SHEET NO. 2 OF 2	
1.0 OVER	10 UNDER	±0.2	H. TAKASE	2004/01/06			
10 OVER	30 UNDER	±0.25	APPROVED BY	DATE			
30 OVER		±0.3	MATERIAL NO.				
ANGULAR	±3 °		SEE CHART				
DRAFT WHERE APPLICABLE MUST REMAIN WITHIN DIMENSIONS			SIZE	THIS DRAWING CONTAINS INFORMATION THAT IS PROPRIETARY TO MOLEX ELECTRONIC TECHNOLOGIES, LLC AND SHOULD NOT BE USED WITHOUT WRITTEN PERMISSION			
			A3				

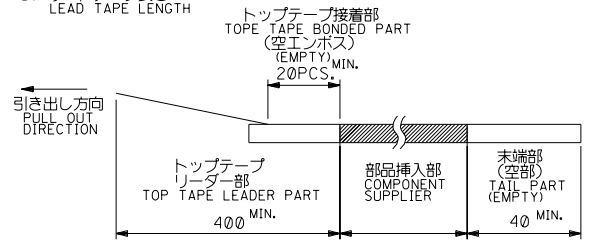
9 8 7 6 5 4 3 2 1

DWG. NO. SD-54363-039



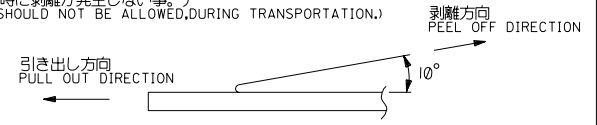
注) NOTES

1. 製品番号54363-**-71 詳細寸法については、製品単体図面を参照下さい。
IN THE PACKAGE PART NUMBER: 54363-**-71 DETAILED DIMENSIONS, SEE SALES DRAWING FOR CONNECTOR.
2. 梱包数量: 2500個/リール
NUMBER OF CONNECTORS: 2500 PCS/REEL.
3. リードテープ長さ
LEAD TAPE LENGTH



4. トップテープの剥離強度: (剥離方向は下図参照)
PEELING OFF FORCE OF TOP TAPE (PELLING DIRECTION AS SHOWN IN FOLLOWING FIGURE.)
0.1~1.3N (10~130gf)

尚、本規格値は、出荷時に適用。
THIS REQUIREMENT SHOULD BE APPLIED AT SHIPMENT.
(但し、輸送時に剥離が発生しない事。)
(PEEL OFF SHOULD NOT BE ALLOWED, DURING TRANSPORTATION.)

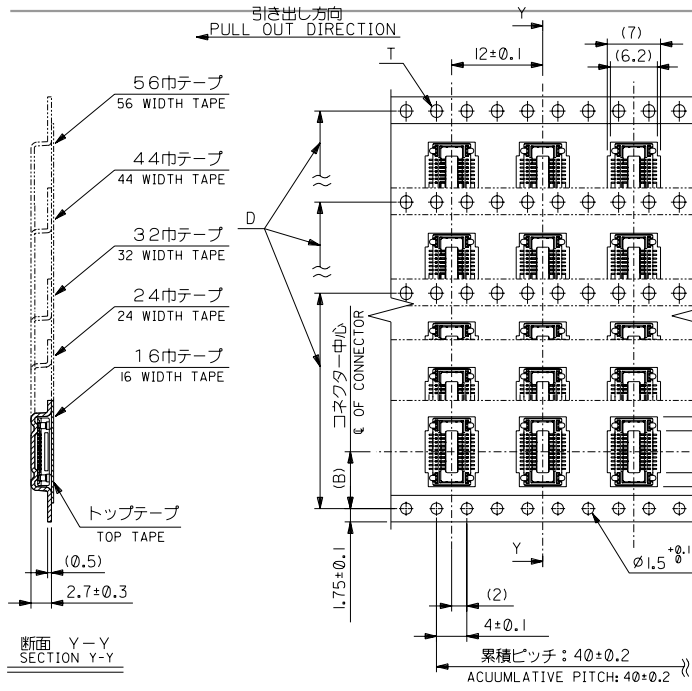


5. 材料
MATERIAL
キャリアテープ: ポリプロピレン (PP)
CARRIER TAPE: POLYPROPYLENE (PP)
トップテープ: PET, PE, PEF
TOP TAPE: PET, PE, PEF
リール: ポリスチレン
REEL: POLYSTYRENE
6. この製品は54363-**-01, (エンボス梱包品 54363-**-08) の鉛フリー品です。
THIS PRODUCT IS 'LEAD FREE' OF 54363-**-01, (EMBOSSED TAPE PKG 54363-**-08)

DO NOT SCALE DRAWING

EC NO. DRAWN: CHK: APPR:	EC NO. DRAWN: CHK: APPR:	EC NO. DRAWN: CHK: APPR:	REVISED	MATERIAL 材料	GENERAL TOLERANCES: (UNLESS SPECIFIED) 一般公差	SCALE NONE	DESIGN UNITS mm INCH	THIRD ANGLE PROJECTION	DIMENSIONS: mm INCH mm INCH mm ONLY	SHT REV	REVISE ON CAD ONLY
			ECNN: J2004-2225 DRAWN: A.IDA '04/02/02 CHK: H.TAKASE APPR: MITAZAWA/YO.ITO								
A	0	6	RELEASED	FINISH 仕上げ	ANGLE 角度	+3°	APPROVED BY & DATE S. Iida 04/01/06	MATERIAL NO. SEE CHART	DRAWING NO. SD-54363-039	SHEET NO. 1 OF 2	SIZE B
			ECNN: J2004-1740 DRAWN: A.IDA '04/01/06 CHK: H.TAKASE APPR: MIYAZAWA/YO.ITO								
8	7	6	REV	INS. RANGE 検査外径			CAD FILENAME SD-54363-039.S01	MATERIAL NO. SEE CHART	DRAWING NO. SD-54363-039	SHEET NO. 1 OF 2	SIZE B

DWG. NO. SD-54363-039



57.5	56±0.3	52.4	44.2	40.55	54363-1678	160	—
			39.2	35.55	54363-1478	140	○
			34.2	30.55	54363-1278	120	○
			31.7	28.05	54363-1178	110	○
45.5	44±0.3	40.4	29.2	25.55	54363-1078	100	○
			26.7	23.05	54363-0978	90	—
			24.2	20.55	54363-0878	80	○
33.5	32±0.3	28.4	21.7	18.05	54363-0778	70	○
			19.2	15.55	54363-0678	60	○
			16.7	13.05	54363-0578	50	○
25.5	24±0.3	—	14.2	10.55	54363-0478	40	○
			11.7	8.05	54363-0378	30	○
17.5	16±0.3	—	9.2	5.55	54363-0278	20	○

EC NO. DRAWN: CHK'G: APPR:	EC NO. DRAWN: CHK'G: APPR:	EC NO. DRAWN: CHK'G: APPR:	EC NO. DRAWN: CHK'G: APPR:	EC NO. DRAWN: CHK'G: APPR:	SEE SHEET 1 OF 2 ECNNO. DRAWN: CHK'G: APPR:	DESCRIPTION MATERIAL 材料
					0	FINISH 仕上げ
						WIRE RANGE 適用電線範囲
						INS. RANGE 被覆外径

GENERAL TOLERANCES: (UNLESS SPECIFIED) — 一般公差	SCALE NONE	DESIGN UNITS mm INCH	THIRD ANGLE PROJECTION	DIMENSIONS: mm INCH mm INCH mm ONLY	SHT REV
10 UNDER 未満	+0.2	DRAWN BY & DATE A. Iida 04/01/06	<input checked="" type="checkbox"/>	<input type="checkbox"/> mm <input type="checkbox"/> INCH <input checked="" type="checkbox"/> mm ONLY	REVISE ON CAD ONLY
10 OVER 以上	+0.25	CHECKED BY & DATE S. Takase 04/01/06			
30 OVER 以上	+0.3	APPROVED BY & DATE S. Takase / S. Ota 04/01/06			
ANGLE 角度	±3°	CAD FILENAME SD-54363-039.S02	<input checked="" type="checkbox"/>		
THIS DRAWING CONTAINS INFORMATION THAT IS PROPRIETARY TO MOLEX INCORPORATED AND SHOULD NOT BE USED WITHOUT WRITTEN PERMISSION.			TITLE: 54363-***71 TAPING PACKAGE -LEAD FREE-		
			MOLEX INCORPORATED		
		MATERIAL NO. SEE CHART	DRAWING NO. SD-54363-039	SHEET NO. 2	
					SIZE B
EN-02J(097) MXJ-54					

A 54363039S02