



**Distributor of ASSMANN WSW Components: Excellent Integrated System Limited**  
Datasheet of A-HDF44LL-WP - D-Sub Connector Receptacle, Female Sockets 44 Position  
Panel Mount Solder Cup

Contact us: [sales@integrated-circuit.com](mailto:sales@integrated-circuit.com) Website: [www.integrated-circuit.com](http://www.integrated-circuit.com)

---

## **Excellent Integrated System Limited**

Stocking Distributor

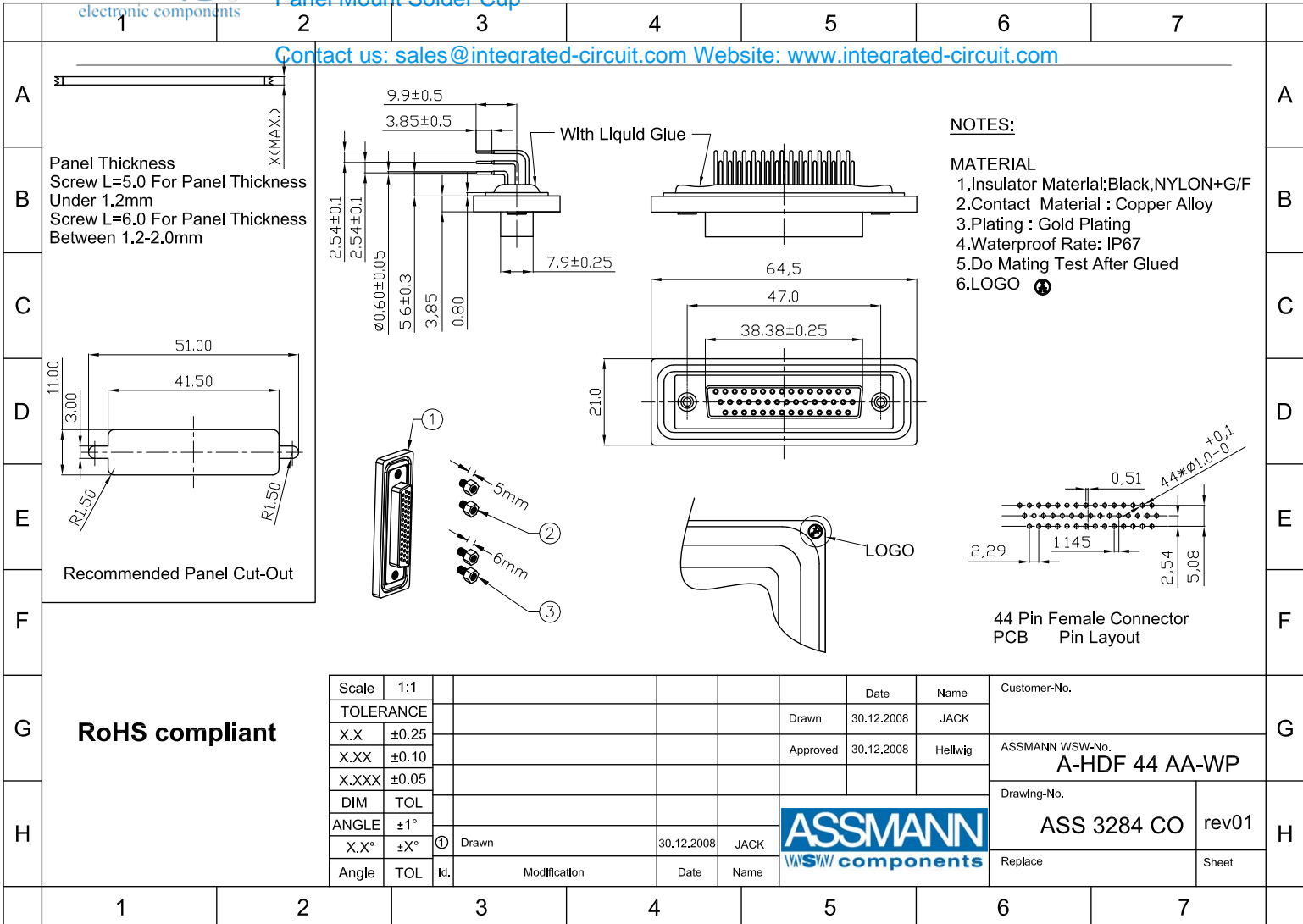
Click to view price, real time Inventory, Delivery & Lifecycle Information:

[ASSMANN WSW Components](#)  
[A-HDF44LL-WP](#)

For any questions, you can email us directly:

[sales@integrated-circuit.com](mailto:sales@integrated-circuit.com)

Contact us: [sales@integrated-circuit.com](mailto:sales@integrated-circuit.com) Website: [www.integrated-circuit.com](http://www.integrated-circuit.com)



**NOTES:**

**MATERIAL**

1. Insulator Material: Black, NYLON+G/F
2. Contact Material : Copper Alloy
3. Plating : Gold Plating
4. Waterproof Rate: IP67
5. Do Mating Test After Glued
6. LOGO

Recommended Panel Cut-Out

44 Pin Female Connector  
PCB Pin Layout

**RoHS compliant**

Scale	1:1					Date	Name	Customer-No.
TOLERANCE						Drawn	30.12.2008	JACK
X.X	±0.25					Approved	30.12.2008	Hellwig
X.XX	±0.10							ASSMANN WSW-No. <b>A-HDF 44 AA-WP</b>
X.XXX	±0.05							Drawing-No.
DIM	TOL							<b>ASS 3284 CO</b>
ANGLE	±1°							rev01
X.X°	±X°	①	Drawn	30.12.2008	JACK			Replace
Angle	TOL	Id.	Modification	Date	Name			Sheet