

## Excellent Integrated System Limited

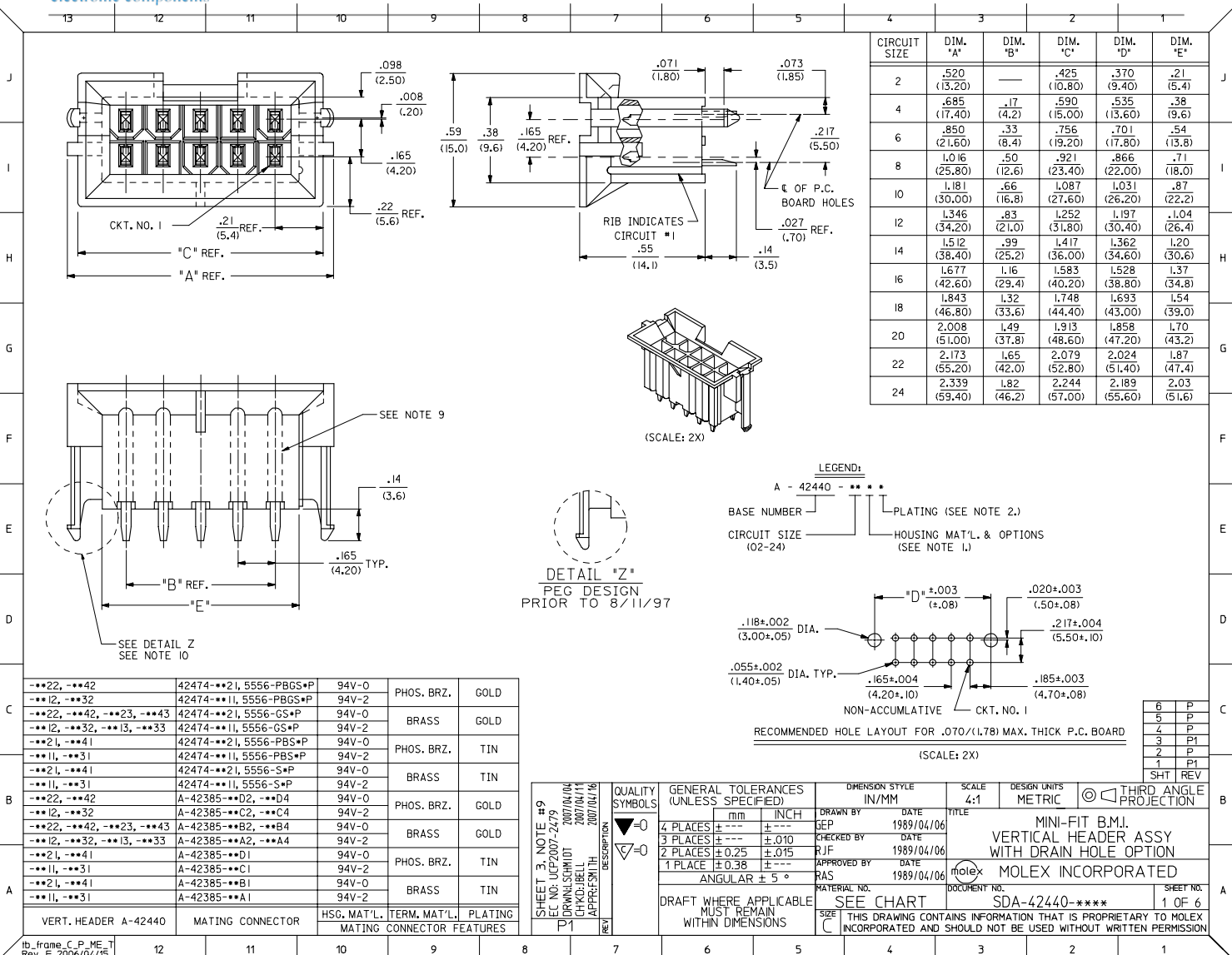
Stocking Distributor

Click to view price, real time Inventory, Delivery & Lifecycle Information:

[Molex Connector Corporation](#)  
[15-24-6066](#)

For any questions, you can email us directly:

[sales@integrated-circuit.com](mailto:sales@integrated-circuit.com)



CIRCUIT SIZE	DIM. "A"	DIM. "B"	DIM. "C"	DIM. "D"	DIM. "E"
2	.520 (13.20)	—	.425 (10.80)	.370 (9.40)	.21 (5.4)
4	.685 (17.40)	.17 (4.2)	.590 (15.00)	.535 (13.60)	.38 (9.6)
6	.850 (21.60)	.33 (8.4)	.756 (19.20)	.701 (17.80)	.54 (13.8)
8	1.016 (25.80)	.50 (12.6)	.921 (23.40)	.866 (22.00)	.71 (18.0)
10	1.181 (30.00)	.66 (16.8)	1.087 (27.60)	1.031 (26.20)	.87 (22.2)
12	1.346 (34.20)	.83 (21.0)	1.252 (31.80)	1.197 (30.40)	1.04 (26.4)
14	1.512 (38.40)	.99 (25.2)	1.417 (36.00)	1.362 (34.60)	1.20 (30.6)
16	1.677 (42.60)	1.16 (29.4)	1.583 (40.20)	1.528 (38.80)	1.37 (34.8)
18	1.843 (46.80)	1.32 (33.6)	1.748 (44.40)	1.693 (43.00)	1.54 (39.0)
20	2.008 (51.00)	1.49 (37.8)	1.913 (48.60)	1.858 (47.20)	1.70 (43.2)
22	2.173 (55.20)	1.65 (42.0)	2.079 (52.80)	2.024 (51.40)	1.87 (47.4)
24	2.339 (59.40)	1.82 (46.2)	2.244 (57.00)	2.189 (55.60)	2.03 (51.6)

Part Number	Part Description	Plating	Material	Finish
--**22, --**42	42474--**2I, 5556-PBGS*P	94V-0	PHOS. BRZ.	GOLD
--**I2, --**32	42474--**I1, 5556-PBGS*P	94V-2	PHOS. BRZ.	GOLD
--**22, --**42, --**23, --**43	42474--**2I, 5556-GS*P	94V-0	BRASS	GOLD
--**I2, --**32, --**I3, --**33	42474--**I1, 5556-GS*P	94V-2	BRASS	GOLD
--**2I, --**4I	42474--**2I, 5556-PBS*P	94V-0	PHOS. BRZ.	TIN
--**I1, --**3I	42474--**I1, 5556-PBS*P	94V-2	PHOS. BRZ.	TIN
--**2I, --**4I	42474--**2I, 5556-S*P	94V-0	BRASS	TIN
--**I1, --**3I	42474--**I1, 5556-S*P	94V-2	BRASS	TIN
--**22, --**42	A-42385--**D2, --**D4	94V-0	PHOS. BRZ.	GOLD
--**I2, --**32	A-42385--**D2, --**D4	94V-2	PHOS. BRZ.	GOLD
--**22, --**42, --**23, --**43	A-42385--**B2, --**B4	94V-0	BRASS	GOLD
--**I2, --**32, --**I3, --**33	A-42385--**B2, --**B4	94V-2	BRASS	GOLD
--**2I, --**4I	A-42385--**D1	94V-0	PHOS. BRZ.	TIN
--**I1, --**3I	A-42385--**D1	94V-2	PHOS. BRZ.	TIN
--**2I, --**4I	A-42385--**B1	94V-0	BRASS	TIN
--**I1, --**3I	A-42385--**B1	94V-2	BRASS	TIN

SHEET 3, NOTE #9 E.C. NO: UCF2007-2479 DRAWN: SCHMIDT 2007/04/04 CHKD: JIBELL 2007/04/11 APPROV: SMITH 2007/04/16	QUALITY SYMBOLS ▽=0 ▽=0	GENERAL TOLERANCES (UNLESS SPECIFIED)	DIMENSION STYLE IN/MM	SCALE 4:1	DESIGN UNITS METRIC	THIRD ANGLE PROJECTION
		4 PLACES ±.010 ±.015 3 PLACES ±.010 ±.015 2 PLACES ±.025 ±.015 1 PLACE ±0.38 ±.015	ANGULAR ± 5°	DRAWN BY GEP 1989/04/06	CHECKED BY RUF 1989/04/06	APPROVED BY RAS 1989/04/06
DRAFT WHERE APPLICABLE MUST REMAIN WITHIN DIMENSIONS		SEE CHART		MATERIAL NO.	DOCUMENT NO.	SHEET NO.
				SDA-42440-****		1 OF 6
THIS DRAWING CONTAINS INFORMATION THAT IS PROPRIETARY TO MOLEX INCORPORATED AND SHOULD NOT BE USED WITHOUT WRITTEN PERMISSION						

NOTES:

- 1) MATERIAL:
  - HOUSING MATERIAL AND OPTIONS:
  - 1 = NYLON 6/6, UL 94V-2, COLOR: NATURAL, WITHOUT DRAIN HOLES
  - 2 = NYLON 6/6, UL 94V-0, COLOR: NATURAL, WITHOUT DRAIN HOLES
  - 3 = NYLON 6/6, UL 94V-2, COLOR: NATURAL, WITH DRAIN HOLES
  - 4 = NYLON 6/6, UL 94V-0, COLOR: NATURAL, WITH DRAIN HOLES
  - TERMINALS: BRASS
- 2) TERMINAL PLATING:
  - S = .000100/(0.00254) MIN. BRIGHT TIN OVER .000050/(0.00127) MIN. NICKEL
  - \*S = .000030/(0.00076) MIN. SELECT GOLD AND .000100/(0.00254) MIN. SELECT MATTE TIN OVER .000050/(0.00127) MIN. NICKEL OVERALL
  - \*S3 = .000050/(0.00127) MIN. SELECT GOLD AND .000100/(0.00254) MIN. SELECT MATTE TIN OVER .000050/(0.00127) MIN. NICKEL OVERALL
  - \*THE PRIMARY SHIPPING CARTON WILL BE LABELED 'COMPLIANT TO RoHS DIRECTIVE 2002/95/EC AND ELV ANNEX II OF DIRECTIVE 200/53/EC', CARTONS WITHOUT THIS LABEL MAY CONTAIN PRODUCT WITH TIN-LEAD PLATING.
- 3) PRODUCT SPECIFICATION AND PROCESSING PARAMETERS: PS-5556-002
- 4) PACKAGING: SEE CHARTS
- 5) 6-24 CIRCUIT PARTS MATE WITH MINI-FIT JR. RECEPTACLES #5557 AND HEADERS #42385 AND #42474, 2 AND 4 CIRCUIT PARTS MATE WITH 42385 AND 42474 HEADERS ONLY.
- 6) PART ALLOWS FOR UP TO .100/(2.54) MISALIGNMENT WITH MATING RECEPTACLE IN ANY DIRECTION. SEE MATING CONNECTOR DRAWINGS FOR SPECIFIC ALLOWANCES.
- 7) CONNECTOR IS NOT DESIGNED FOR CURRENT SHARING.
- 8) CONNECTOR ASSEMBLIES ARE NOT BE MATED OR UNMATED WHILE CIRCUITS ARE LIVE.
- 9) OPTIONAL RIBS MAY BE FOUND ON PARTS MANUFACTURED AFTER 08/11/1997. RIB LOCATION IS DETERMINED BY MOLD DESIGN FOR MANUFACTURING EASE AND THE LOCATION DOES NOT AFFECT PART FUNCTION OR PERFORMANCE. LOCATION OF RIBS MAY VARY ON PARTS WITHIN MANUFACTURING LOT OR SHIPMENT. THIS DRAWING SHOWS TYPICAL RIB LOCATIONS.
- 10) PARTS MANUFACTURED AFTER 8/15/1997 MAY HAVE REVISED LOCK PEG.
- 11) PART CONFORMS TO CLASS 'B' REQUIREMENTS OF COSMETIC SPECIFICATION PS-45499-002.

SEE SHEET ONE IEC NO: UCP2007-2479 DRWNL: SCHMIDT 2007/04/04 CHKD: BELL 2007/04/11 APPR: SMITH 2007/04/16 P1	QUALITY SYMBOLS  	GENERAL TOLERANCES (UNLESS SPECIFIED)		DIMENSION STYLE IN/MM	SCALE ---	DESIGN UNITS METRIC	THIRD ANGLE PROJECTION		
		4 PLACES ±--- ±--- 3 PLACES ±--- ±--- 2 PLACES ±--- ±--- 1 PLACE ±--- ±---	mm INCH	DRAWN BY DEP	DATE 1989/04/06	TITLE MINI-FIT B.M.I. VERTICAL HEADER ASSY WITH DRAIN HOLE OPTION			
		ANGULAR ±---°	DRAFT WHERE APPLICABLE MUST REMAIN WITHIN DIMENSIONS	CHECKED BY RJF	DATE 1989/04/06	APPROVED BY RAS			
		MATERIAL NO. SEE CHART	DOCUMENT NO. SDA-42440-****	MOLEX INCORPORATED	SHEET NO. 3 OF 6	THIS DRAWING CONTAINS INFORMATION THAT IS PROPRIETARY TO MOLEX INCORPORATED AND SHOULD NOT BE USED WITHOUT WRITTEN PERMISSION			



PLATING: TIN (SEE NOTE 2 OPTION 'S')		PLATING: TIN (SEE NOTE 2 OPTION 'S')		PLATING: 30 M.I. SELECT GOLD (SEE NOTE 2 OPTION 'GS')		PLATING: 30 M.I. SELECT GOLD (SEE NOTE 2 OPTION 'GS')	
DRAINS: WITHOUT DRAIN HOLES		DRAINS: WITHOUT DRAIN HOLES		DRAINS: WITHOUT DRAIN HOLES		DRAINS: WITHOUT DRAIN HOLES	
PEGS: WITH PEGS		PEGS: WITH PEGS		PEGS: WITH PEGS		PEGS: WITH PEGS	
MAT'L: 94V-2 (NATURAL)		MAT'L: 94V-0 (NATURAL)		MAT'L: 94V-2 (NATURAL)		MAT'L: 94V-0 (NATURAL)	
PACKAGING: TRAY PER PK-42440-001		PACKAGING: TRAY PER PK-42440-001		PACKAGING: TRAY PER PK-42440-001		PACKAGING: TRAY PER PK-42440-001	
PART NO.	ENG. NO.	CKTS	PART NO.	ENG. NO.	CKTS	PART NO.	ENG. NO.
NO EDP	A-42440-021I	-	NO EDP	A-42440-022I	-	NO EDP	A-42440-022I
15-24-604I	A-42440-041I	-	15-24-604I	A-42440-042I	-	15-28-604I	A-42440-042I
NO EDP	A-42440-061I	-	NO EDP	A-42440-062I	-	NO EDP	A-42440-062I
NO EDP	A-42440-081I	-	NO EDP	A-42440-082I	-	NO EDP	A-42440-082I
15-24-610I	A-42440-101I	-	15-24-610I	A-42440-102I	-	15-28-610I	A-42440-102I
NO EDP	A-42440-121I	-	NO EDP	A-42440-122I	-	NO EDP	A-42440-122I
15-24-614I	A-42440-141I	-	15-24-614I	A-42440-142I	-	15-28-614I	A-42440-142I
15-24-616I	A-42440-161I	-	15-24-616I	A-42440-162I	-	15-28-616I	A-42440-162I
15-24-618I	A-42440-181I	-	15-24-618I	A-42440-182I	-	15-28-618I	A-42440-182I
NO EDP	A-42440-201I	-	NO EDP	A-42440-202I	-	NO EDP	A-42440-202I
NO EDP	A-42440-221I	-	NO EDP	A-42440-222I	-	NO EDP	A-42440-222I
15-24-624I	A-42440-241I	-	15-24-624I	A-42440-242I	-	15-28-624I	A-42440-242I

PLATING: TIN (SEE NOTE 2 OPTION 'S')		PLATING: TIN (SEE NOTE 2 OPTION 'S')		PLATING: 30 M.I. SELECT GOLD (SEE NOTE 2 OPTION 'GS')		PLATING: 30 M.I. SELECT GOLD (SEE NOTE 2 OPTION 'GS')	
DRAINS: WITH DRAIN HOLES		DRAINS: WITH DRAIN HOLES		DRAINS: WITH DRAIN HOLES		DRAINS: WITH DRAIN HOLES	
PEGS: WITH PEGS		PEGS: WITH PEGS		PEGS: WITH PEGS		PEGS: WITH PEGS	
MAT'L: 94V-2 (NATURAL)		MAT'L: 94V-0 (NATURAL)		MAT'L: 94V-2 (NATURAL)		MAT'L: 94V-0 (NATURAL)	
PACKAGING: TRAY PER PK-42440-001		PACKAGING: TRAY PER PK-42440-001		PACKAGING: TRAY PER PK-42440-001		PACKAGING: TRAY PER PK-42440-001	
PART NO.	ENG. NO.	CKTS	PART NO.	ENG. NO.	CKTS	PART NO.	ENG. NO.
NO EDP	A-42440-023I	-	NO EDP	A-42440-024I	-	NO EDP	A-42440-024I
15-24-604E	A-42440-043I	-	15-24-604E	A-42440-044I	-	15-28-604E	A-42440-044I
15-24-606E	A-42440-063I	-	NO EDP	A-42440-064I	-	NO EDP	A-42440-064I
NO EDP	A-42440-083I	-	NO EDP	A-42440-084I	-	NO EDP	A-42440-084I
15-24-610E	A-42440-103I	-	15-24-610E	A-42440-104I	-	15-28-610E	A-42440-104I
NO EDP	A-42440-123I	-	NO EDP	A-42440-124I	-	NO EDP	A-42440-124I
15-24-614E	A-42440-143I	-	15-24-614E	A-42440-144I	-	15-28-614E	A-42440-144I
NO EDP	A-42440-163I	-	NO EDP	A-42440-164I	-	NO EDP	A-42440-164I
15-24-618E	A-42440-183I	-	15-24-618E	A-42440-184I	-	15-28-618E	A-42440-184I
NO EDP	A-42440-203I	-	NO EDP	A-42440-204I	-	NO EDP	A-42440-204I
NO EDP	A-42440-223I	-	NO EDP	A-42440-224I	-	NO EDP	A-42440-224I
15-24-624E	A-42440-243I	-	15-24-624E	A-42440-244I	-	15-28-624E	A-42440-244I

STANDARDIZE NOTES EC NO: UCP2007-2952 DRWING: SCHM IDT 2007/03/12 CHK'D: BAUER 2007/03/19 APPR: SMITH 2007/03/19	QUALITY SYMBOLS ▽=0 ▽=0	GENERAL TOLERANCES (UNLESS SPECIFIED) mm INCH 4 PLACES ±--- ±--- 3 PLACES ±--- ±--- 2 PLACES ±--- ±--- 1 PLACE ±--- ±--- ANGULAR ±---°	DIMENSION STYLE IN/MM DRAWN BY DATE GEP 1995/03/03 CHECKED BY DATE RJP 1995/03/03 APPROVED BY DATE RJP 1995/03/03	SCALE --- DESIGN UNITS METRIC THIRD ANGLE PROJECTION	TITLE MINI-FIT B.M.I. VERTICAL HEADER ASSY WITH DRAIN HOLE OPTION
		MATERIAL NO. SEE CHART DOCUMENT NO. SDA-42440-**** SHEET NO. 4 OF 6	MOLEX INCORPORATED		
		DRAFT WHERE APPLICABLE MUST REMAIN WITHIN DIMENSIONS		THIS DRAWING CONTAINS INFORMATION THAT IS PROPRIETARY TO MOLEX INCORPORATED AND SHOULD NOT BE USED WITHOUT WRITTEN PERMISSION	
		SIZE C		MOLEX INCORPORATED	



	13	12	11	10	9	8	7	6	5	4	3	2	1				
J	PLATING: 50 M.I. SELECT GOLD (SEE NOTE 2 OPTION 'G33') DRAINS: WITHOUT DRAIN HOLES PEGS: WITH PEGS MAT'L: 94V-2 [NATURAL] PACKAGING: TRAY PER PK-42440-001				PLATING: 50 M.I. SELECT GOLD (SEE NOTE 2 OPTION 'G33') DRAINS: WITHOUT DRAIN HOLES PEGS: WITH PEGS MAT'L: 94V-0 [NATURAL] PACKAGING: TRAY PER PK-42440-001				PLATING: 50 M.I. SELECT GOLD (SEE NOTE 2 OPTION 'G33') DRAINS: WITH DRAIN HOLES PEGS: WITH PEGS MAT'L: 94V-2 [NATURAL] PACKAGING: TRAY PER PK-42440-001				PLATING: 50 M.I. SELECT GOLD (SEE NOTE 2 OPTION 'G33') DRAINS: WITH DRAIN HOLES PEGS: WITH PEGS MAT'L: 94V-0 [NATURAL] PACKAGING: TRAY PER PK-42440-001				J
I	PART NO.	ENG NO.	CKTS	PART NO.	ENG NO.	CKTS	PART NO.	ENG NO.	CKTS	PART NO.	ENG NO.	CKTS					
	NO EDP	A-42440-02I3	2	NO EDP	A-42440-0223	2	NO EDP	A-42440-0233	2	NO EDP	A-42440-0243	2					
	NO EDP	A-42440-04I3	4	NO EDP	A-42440-0423	4	NO EDP	A-42440-0433	4	NO EDP	A-42440-0443	4					
	NO EDP	A-42440-06I3	6	NO EDP	A-42440-0623	6	NO EDP	A-42440-0633	6	NO EDP	A-42440-0643	6					
	NO EDP	A-42440-08I3	8	NO EDP	A-42440-0823	8	NO EDP	A-42440-0833	8	NO EDP	A-42440-0843	8					
	NO EDP	A-42440-10I3	10	NO EDP	A-42440-1023	10	NO EDP	A-42440-1033	10	NO EDP	A-42440-1043	10					
	NO EDP	A-42440-12I3	12	NO EDP	A-42440-1223	12	NO EDP	A-42440-1233	12	NO EDP	A-42440-1243	12					
	NO EDP	A-42440-14I3	14	NO EDP	A-42440-1423	14	NO EDP	A-42440-1433	14	NO EDP	A-42440-1443	14					
	NO EDP	A-42440-16I3	16	NO EDP	A-42440-1623	16	NO EDP	A-42440-1633	16	NO EDP	A-42440-1643	16					
	NO EDP	A-42440-18I3	18	NO EDP	A-42440-1823	18	NO EDP	A-42440-1833	18	NO EDP	A-42440-1843	18					
	NO EDP	A-42440-20I3	20	NO EDP	A-42440-2023	20	NO EDP	A-42440-2033	20	NO EDP	A-42440-2043	20					
	NO EDP	A-42440-22I3	22	NO EDP	A-42440-2223	22	NO EDP	A-42440-2233	22	NO EDP	A-42440-2243	22					
	NO EDP	A-42440-24I3	24	NO EDP	A-42440-2423	24	NO EDP	A-42440-2433	24	NO EDP	A-42440-2443	24					

G	PLATING: DRAINS: PEGS: MAT'L: PACKAGING:				PLATING: DRAINS: PEGS: MAT'L: PACKAGING:				PLATING: DRAINS: PEGS: MAT'L: PACKAGING:				PLATING: DRAINS: PEGS: MAT'L: PACKAGING:				G
F	ITEM NO.	CKTS	ITEM NO.	CKTS	ITEM NO.	CKTS	ITEM NO.	CKTS	ITEM NO.	CKTS	ITEM NO.	CKTS					
	-	2	-	2	-	2	-	2	-	2	-	2					
	-	4	-	4	-	4	-	4	-	4	-	4					
	-	6	-	6	-	6	-	6	-	6	-	6					
	-	8	-	8	-	8	-	8	-	8	-	8					
	-	10	-	10	-	10	-	10	-	10	-	10					
	-	12	-	12	-	12	-	12	-	12	-	12					
	-	14	-	14	-	14	-	14	-	14	-	14					
	-	16	-	16	-	16	-	16	-	16	-	16					
	-	18	-	18	-	18	-	18	-	18	-	18					
	-	20	-	20	-	20	-	20	-	20	-	20					
	-	22	-	22	-	22	-	22	-	22	-	22					
	-	24	-	24	-	24	-	24	-	24	-	24					

STANDARDIZE NOTES EC NO: UCP2007-2952 DRWNL: SCHM DT 2007/03/12 CHKD: ABER 2007/03/19 APPR: SMT TH 2007/03/19	QUALITY SYMBOLS ▽=0 ▽=0	GENERAL TOLERANCES (UNLESS SPECIFIED) mm INCH 4 PLACES ±--- ±--- 3 PLACES ±--- ±--- 2 PLACES ±--- ±--- 1 PLACE ±--- ±--- ANGULAR ±1/2°	DIMENSION STYLE IN/MM DRAWN BY DATE ERH 2000/02/23 CHECKED BY DATE MB 2000/02/23 APPROVED BY DATE RE 2000/02/23	SCALE --- DESIGN UNITS METRIC THIRD ANGLE PROJECTION	TITLE MINI-FIT B.M.I. VERTICAL HEADER ASSY WITH DRAIN HOLE OPTION	MATERIAL NO. SEE CHART	DOCUMENT NO. SDA-42440-****	SHEET NO. 5 OF 6	
		DRAFT WHERE APPLICABLE MUST REMAIN WITHIN DIMENSIONS							
		THIS DRAWING CONTAINS INFORMATION THAT IS PROPRIETARY TO MOLEX INCORPORATED AND SHOULD NOT BE USED WITHOUT WRITTEN PERMISSION							
		MOLEX INCORPORATED							



	13	12	11	10	9	8	7	6	5	4	3	2	1
J	PLATING: TIN (SEE NOTE 2 OPTION 'S')			PLATING: TIN (SEE NOTE 2 OPTION 'S')			PLATING: 30 M.I. SELECT GOLD (SEE NOTE 2 OPTION 'GS')			PLATING: 30 M.I. SELECT GOLD (SEE NOTE 2 OPTION 'GS')			
	DRAINS: WITH DRAIN HOLES			DRAINS: WITH DRAIN HOLES			DRAINS: WITH DRAIN HOLES			DRAINS: WITH DRAIN HOLES			
	PEGS: WITH PEGS			PEGS: WITH PEGS			PEGS: WITH PEGS			PEGS: WITH PEGS			
	MAT'L: 94V-2 [NATURAL]			MAT'L: 94V-0 [NATURAL]			MAT'L: 94V-2 [NATURAL]			MAT'L: 94V-0 [NATURAL]			
	PACKAGING: TUBE PER PK-40873-0151			PACKAGING: TUBE PER PK-40873-0151			PACKAGING: TUBE PER PK-40873-0151			PACKAGING: TUBE PER PK-40873-0151			
I	ITEM NO.		CKTS	ITEM NO.		CKTS	ITEM NO.		CKTS	ITEM NO.		CKTS	
	-	-	2	-	-	2	-	-	2	-	-	2	
	42440-3049	-	4	42440-3061	-	4	42440-3073	-	4	42440-3085	-	4	
	42440-3050	-	6	-	-	6	42440-3074	-	6	-	-	6	
	-	-	8	-	-	8	-	-	8	-	-	8	
	42440-3052	-	10	42440-3064	-	10	42440-3076	-	10	42440-3088	-	10	
	-	-	12	-	-	12	-	-	12	-	-	12	
	42440-3054	-	14	42440-3066	-	14	42440-3078	-	14	42440-3090	-	14	
	-	-	16	-	-	16	-	-	16	-	-	16	
H	42440-3056	-	18	42440-3068	-	18	42440-3080	-	18	42440-3092	-	18	
	-	-	20	-	-	20	-	-	20	-	-	20	
	-	-	22	-	-	22	-	-	22	-	-	22	
	42440-3059	-	24	42440-3071	-	24	42440-3083	-	24	42440-3095	-	24	

	13	12	11	10	9	8	7	6	5	4	3	2	1
G	PLATING: 50 M.I. SELECT GOLD (SEE NOTE 2 OPTION 'GS3')			PLATING: 50 M.I. SELECT GOLD (SEE NOTE 2 OPTION 'GS3')			PLATING: 50 M.I. SELECT GOLD (SEE NOTE 2 OPTION 'GS3')			PLATING: 50 M.I. SELECT GOLD (SEE NOTE 2 OPTION 'GS3')			
	DRAINS: WITHOUT DRAIN HOLES			DRAINS: WITHOUT DRAIN HOLES			DRAINS: WITH DRAIN HOLES			DRAINS: WITH DRAIN HOLES			
	PEGS: WITH PEGS			PEGS: WITH PEGS			PEGS: WITH PEGS			PEGS: WITH PEGS			
	MAT'L: 94V-2 [NATURAL]			MAT'L: 94V-0 [NATURAL]			MAT'L: 94V-2 [NATURAL]			MAT'L: 94V-0 [NATURAL]			
	PACKAGING: TUBE PER PK-40873-0151			PACKAGING: TUBE PER PK-40873-0151			PACKAGING: TUBE PER PK-40873-0151			PACKAGING: TUBE PER PK-40873-0151			
F	ITEM NO.		CKTS	ITEM NO.		CKTS	ITEM NO.		CKTS	ITEM NO.		CKTS	
	-	-	2	-	-	2	-	-	2	-	-	2	
	-	-	4	-	-	4	-	-	4	-	-	4	
	-	-	6	-	-	6	-	-	6	-	-	6	
	-	-	8	-	-	8	-	-	8	-	-	8	
	-	-	10	-	-	10	-	-	10	-	-	10	
	-	-	12	-	-	12	-	-	12	-	-	12	
E	-	-	14	-	-	14	-	-	14	-	-	14	
	-	-	16	-	-	16	-	-	16	-	-	16	
	-	-	18	-	-	18	-	-	18	-	-	18	
	-	-	20	-	-	20	-	-	20	-	-	20	
	-	-	22	-	-	22	-	-	22	-	-	22	
	-	-	24	-	-	24	-	-	24	-	-	24	

STANDARDIZE NOTES EC NO: UCP2007-2952 DRWNL: SCHM DT CHKD: ABER APPR: SM TH DATE: 2007/03/12 DATE: 2007/03/19 DATE: 2007/03/19	QUALITY SYMBOLS ▽=0 ▽=0	GENERAL TOLERANCES (UNLESS SPECIFIED) <table border="1"> <tr> <th></th> <th>mm</th> <th>INCH</th> </tr> <tr> <td>4 PLACES</td> <td>±.005</td> <td>±.0002</td> </tr> <tr> <td>3 PLACES</td> <td>±.005</td> <td>±.0002</td> </tr> <tr> <td>2 PLACES</td> <td>±.005</td> <td>±.0002</td> </tr> <tr> <td>1 PLACE</td> <td>±.005</td> <td>±.0002</td> </tr> </table>		mm	INCH	4 PLACES	±.005	±.0002	3 PLACES	±.005	±.0002	2 PLACES	±.005	±.0002	1 PLACE	±.005	±.0002	DIMENSION STYLE IN/MM SCALE --- DESIGN UNITS METRIC THIRD ANGLE PROJECTION	DRAWN BY ERH DATE 2000/02/23 CHECKED BY MB DATE 2000/02/23 APPROVED BY RE DATE 2000/02/23	TITLE MINI-FIT B.M.I. VERTICAL HEADER ASSY WITH DRAIN HOLE OPTION MOLEX INCORPORATED
			mm	INCH																
		4 PLACES	±.005	±.0002																
		3 PLACES	±.005	±.0002																
2 PLACES	±.005	±.0002																		
1 PLACE	±.005	±.0002																		
DRAFT WHERE APPLICABLE MUST REMAIN WITHIN DIMENSIONS		MATERIAL NO. SEE CHART SIZE C	DOCUMENT NO. SDA-42440-**** THIS DRAWING CONTAINS INFORMATION THAT IS PROPRIETARY TO MOLEX INCORPORATED AND SHOULD NOT BE USED WITHOUT WRITTEN PERMISSION	SHEET NO. 6 OF 6																
MOLEX INCORPORATED																				
MOLEX INCORPORATED																				