

## Excellent Integrated System Limited

Stocking Distributor

Click to view price, real time Inventory, Delivery & Lifecycle Information:

[Samtec, Inc.](#)  
[IPD1-15-D](#)

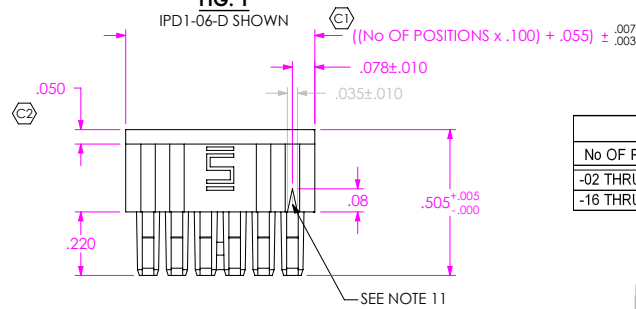
For any questions, you can email us directly:

[sales@integrated-circuit.com](mailto:sales@integrated-circuit.com)

REVISION G

**FIG. 1**

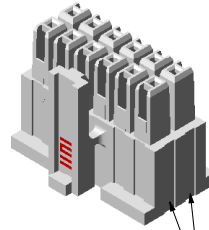
IPD1-06-D SHOWN



DO NOT  
SCALE FROM  
THIS PRINT

**TABLE 1**

No OF POS	T/B BOW	S/S BOW
-02 THRU -15	.002	.002
-16 THRU -25	.003	.003



**IPD1-XX-D-X**

No OF POSITIONS  
-02 THRU -25  
(PER ROW)  
[SEE FIG. 2 FOR -02 POSITION]

**POLARIZATION OPTION**  
 -P: POLARIZED  
 (NOT AVAILABLE WITH  
 -K OPTION)  
 (LEAVE BLANK FOR  
 NO POLARIZATION)  
 (SEE FIG. 3)  
 \*G: KEYED POLARIZATION  
 (NOT AVAILABLE WITH  
 -P OPTION)  
 (SEE SHEET 2, FIG. 4)

**ROW SPECIFICATION**  
 -D: DOUBLE

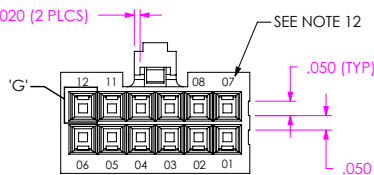
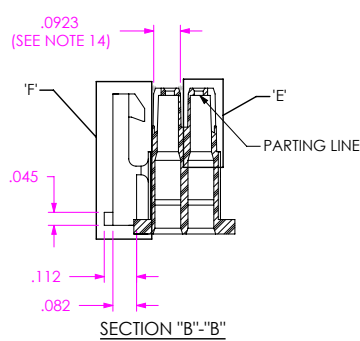
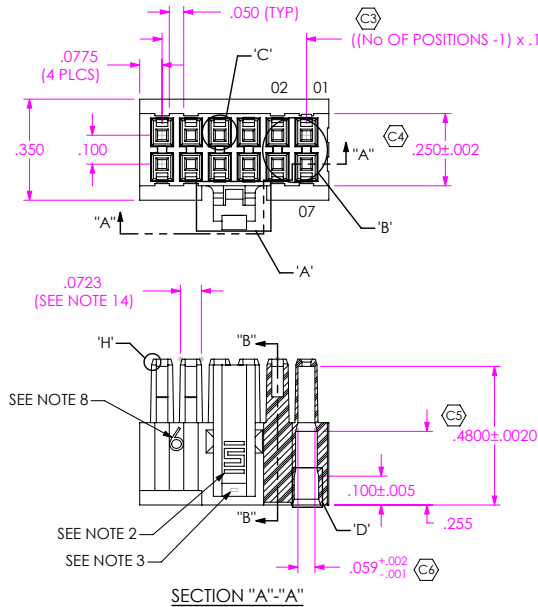
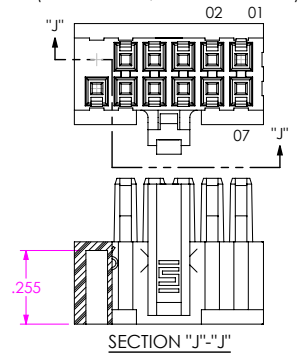
\*NOT RELEASED FOR PRODUCTION

NOTES:

1. (C) REPRESENTS A CRITICAL DIMENSION.
2. SAMTEC LOGO SHALL APPEAR AT ONE LOCATION ON SURFACE SHOWN, APPROXIMATELY .150 x .094 (BOTH SIDES).
3. ALL MULTIPLE CAVITY MOLDS SHALL IDENTIFY EACH CAVITY WITH A LETTER DESIGNATION LOCATED WHERE SHOWN.
4. ALL IDENTIFICATION MARKS MUST NOT STAND GREATER THAN .002 OFF THE SURFACE OF THE PART.
5. MOLDED SURFACES SHALL BE CONSISTENT AND SMOOTH. SURFACES TO BE FREE OF SCATCHES, NICKS, SINK AREAS, VOIDS OR OTHER BLEWISHES.
6. MAX ALLOWABLE BOW: SEE TABLE 1. BOW TO BE MEASURED AT MIDLINE OF PART.
7. PART TO BE SYMMETRIC ABOUT THE CENTERLINE WITHIN  $\pm .002$ , UNLESS OTHERWISE STATED.
8. NUMBER OF POSITIONS (PER ROW) TO BE SHOWN IN THIS AREA EXCLUDING 2, 3 AND 4 POSITIONS. SIZE AND DEPTH SIMILAR TO POSITION 1 INDICATOR.
9. GATE PADS MUST BE RECESSED .005.
10. END CORES ARE POLARIZED. CONFIRM GEOMETRY RELATIVE TO POSITION 1 INDICATOR & GATE PADS.
11. POSITION 1 INDICATOR TO BE RAISED .005 MAX, NOT PRESENT ON 2 POSITION OPTION.
12. SPECIFIED POSITIONS TO BE IDENTIFIED WHERE SHOWN (NOTE 4 APPLIES).
13. MOLD DESIGNER HAS DISCRETION OVER RIB LOCATION. STEEL PRINT SETUP SHEET MUST SHOW RIB CONFIGURATION FOR EACH PART NUMBER.
14. PART MUST DRAFT INWARD FROM BOTTOM TO TOP OF STACK.
15. ALL DIMENSIONS TO BE SYMMETRIC ABOUT CENTERLINE WITHIN .0015 UNLESS OTHERWISE STATED.

**FIG. 3**

IPD1-06-D-P SHOWN  
(SAME AS FIG. 1, EXCEPT AS SHOWN)



UNLESS OTHERWISE SPECIFIED,  
DIMENSIONS ARE IN INCHES.  
TOLERANCES ARE:  
DECIMALS ANGLES  
.XX:  $\pm .01$  [.3]  
.XXX:  $\pm .003$  [.08]  
.XXXX:  $\pm .0015$  [.038]

**PROPRIETARY NOTE**  
THIS DOCUMENT CONTAINS INFORMATION  
CONFIDENTIAL AND PROPRIETARY TO  
SAMTEC, INC. AND SHALL NOT BE REPRODUCED  
OR TRANSFERRED TO OTHER DOCUMENTS OR  
DISCLOSED TO OTHERS OR USED FOR ANY  
PURPOSE OTHER THAN THAT WHICH IT WAS  
OBTAINED WITHOUT THE EXPRESSED WRITTEN  
CONSENT OF SAMTEC, INC.

**MATERIAL:** DO NOT SCALE DRAWING  
ZYTEL 103FHS, COLOR: WHITE

SHEET SCALE: 2:1

**DESCRIPTION:** .100 SHROUDED CONTACT BODY

DWG. NO. IPD1-XX-D-X

BY: CHAD F 03/05/2002 SHEET 1 OF 2

c:\enterprise\dwg\MISC\MKTG\IPD1-XX-D-X-MKT.SLDRAW

**samtec**  
320 PARK EAST BLVD, NEW ALBANY, IN 47150  
PHONE: 812-944-6733 FAX: 812-948-5047  
e-Mail: info@SAMTEC.com code: 53322

REVISION G

