

Excellent Integrated System Limited

Stocking Distributor

Click to view price, real time Inventory, Delivery & Lifecycle Information:

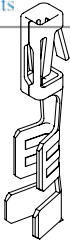
[Samtec, Inc.](#)
[CC79L-2024-01-L](#)

For any questions, you can email us directly:

sales@integrated-circuit.com

REVISION X

DO NOT
SCALE FROM
THIS PRINT



ALL DIMENSIONS ARE REFERENCE
(SEE XC-179-XX-X-XX FOR CONTROLLING PRINT)

CC79X-XXXX-XX-X

SUPPLIED
-L: LOOSE
-R: REEL

LEAD STYLE
 -2630 (26-30 AWG)
 -2024 (20-24 AWG)
 -2830 (28-30 AWG)(PTFE)

PLATING
-F: 3 μ " GOLD ON CONTACT,
BRIGHT ACID TIN ON TAIL
-L: 10 μ " GOLD ON CONTACT,
BRIGHT ACID TIN ON TAIL
-S: 30 μ " GOLD ON CONTACT,
BRIGHT ACID TIN ON TAIL

OPTION
(INSULATION THICKNESS)
-01

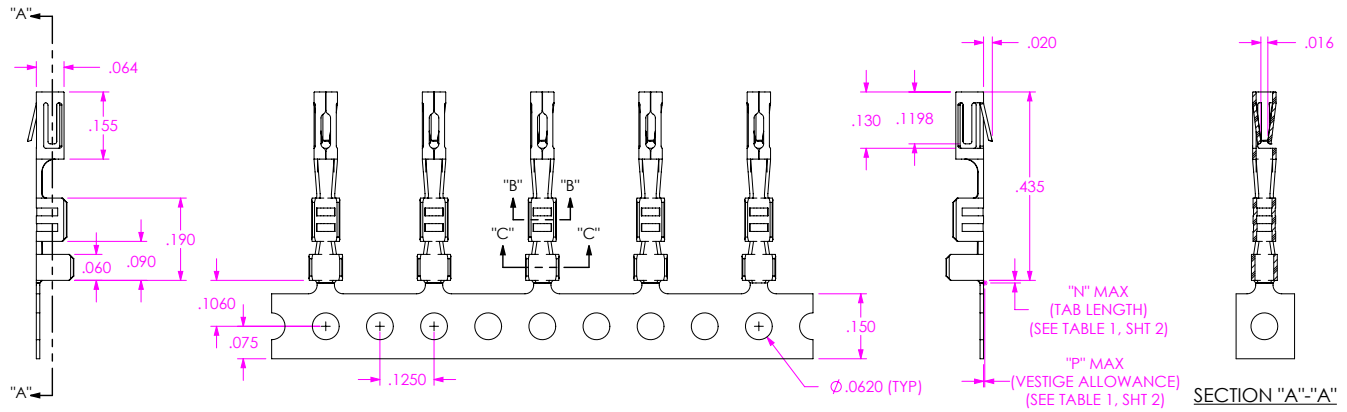
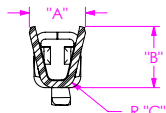


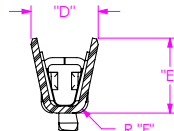
FIG 1
(CC79R-XXXX-01-X SHOWN)

| STYLE | "A" | "B" | "C" | "D" | "E" | "F" |
|-------|------|------|------|------|------|------|
| -2630 | .055 | .045 | .015 | .080 | .073 | .025 |
| -2024 | .080 | .073 | .018 | .110 | .103 | .030 |
| -2830 | .055 | .045 | .015 | .054 | .057 | .016 |

SECTION "B"-"B"
SCALE 6 : 1



SECTION "C"-"C"
SCALE 6 : 1



NOTES:

1. PLATED C-179 PARTS TO BE PULLED, PLATING OPTION CONFIRMED, POSITIONED AS SHOWN ON SAMTEC REEL WITH VIEWPORTS, LABELED CC79R WITH APPROPRIATE PLATING CALLOUT AND LABEL PLACED AS SHOWN.
2. MAXIMUM NO OF SPLICES PER REEL: 2
3. SPLICES ARE NOT TO BE CONNECTED.
4. NUMBER OF SPLICES TO BE MARKED ON EACH REEL.
5. REELED PARTS TO BE INTERLEAVED WITH PAPER BETWEEN EACH LAYER OF PARTS.
6. ALLOWABLE INTERLEAF SPLICES PER REEL: 3
7. SECURELY CONNECT INTERLEAF SPLICE.
8. OUTER WRAP SHALL RECEIVE HMS101SC-16MM PROTECTIVE REEL BAND.
9. DUE TO PLATING REQUIREMENTS CONTACT SAMPLES MAY BE REMOVED INTERMITTENTLY FROM THE CARRIER RESULTING IN SMALL GAPS BUT DOES NOT AFFECT FINAL COUNT.
10. QTY PER REEL: 12,000 ± 15 PCS

UNLESS OTHERWISE SPECIFIED
DIMENSIONS ARE IN INCHES.

PROPRIETARY NOTE

PROPRIETARY NOTE

THIS DOCUMENT CONTAINS CONFIDENTIAL AND PROPRIETARY INFORMATION AND ALL DESIGN, MANUFACTURING, REPRODUCTION, USE, PATENT RIGHTS AND SALES RIGHTS ARE EXPRESSLY RESERVED BY SAMTEC, INC. THIS DOCUMENT SHALL NOT BE DISCLOSED, IN WHOLE OR PART, TO ANY UNAUTHORIZED PERSON OR ENTITY NOR REPRODUCED, TRANSFERRED OR INCORPORATED IN ANY OTHER PROJECT IN ANY MANNER WITHOUT THE EXPRESS WRITTEN CONSENT OF SAMTEC, INC.

samtec
520 PARK EAST BLVD, NEW ALBANY, IN 47150
PHONE: 812-944-6733 FAX: 812-948-5047
e-Mail: info@SAMTEC.com code: 55322

| | | |
|------------------|----------------------|------------------|
| MATERIAL: | DO NOT SCALE DRAWING | SHEET SCALE: 3:1 |
|------------------|----------------------|------------------|

PHOS BRONZE
THICKNESS: .0080

F:\DWG\MISC\MKTG\CC79X-XXXX-XX-X-MKT.SLDDRW

| | |
|--------------|-------------------|
| DESCRIPTION: | .100 IPD1 CONTACT |
|--------------|-------------------|

DWG. NO. CC79X-XXXX-XX-X

| | | |
|------------|-----------|--------------|
| BY: DEAN P | 8/12/2004 | SHEET 1 OF 2 |
|------------|-----------|--------------|

REVISION X

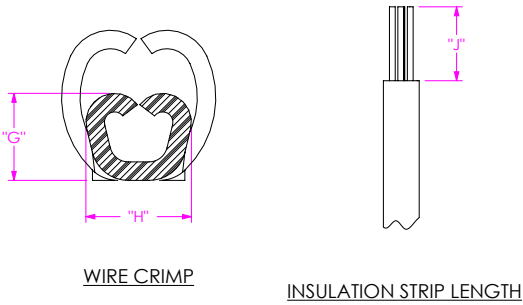


FIG 2
RECOMMENDED PROCESSING

| TABLE 2 | | | | | | | | |
|-----------------|------|-------------|---------------|-------|-------|------|-------------------------|-----------------------------|
| P/N | AWG | STRANDS/AWG | INSULATION OD | "G" | "H" | "J" | "N" MAX (TAB LENGTH) | "P" MAX (VESTIGE LENGTH) |
| CC79X-2630-01-X | 30 | 7/38 | .029-.035 | .0250 | .0430 | .133 | .0120 | .0020 |
| | 28 | 7/36 | .032-.038 | .0260 | .0430 | .133 | .0120 | .0020 |
| | 26 | 7/34 | .048-.054 | .0270 | .0430 | .133 | .0120 | .0020 |
| CC79X-2024-01-X | 24 | 7/32 | .053-.059 | .0310 | .0570 | .128 | .0120 | .0020 |
| | 22 | 7/30 | .059-.065 | .0340 | .0570 | .128 | .0120 | .0020 |
| | 20 | 7/28 | .066-.072 | .0360 | .0570 | .128 | .0120 | .0020 |
| | 20TC | 7/28 | .057-.063 | .0360 | .0570 | .128 | .0120 | .0020 |
| | 24TC | 7/32 | .041-.047 | .0310 | .0570 | .128 | .0120 | .0020 |
| CC79X-2830-01-X | 30TC | 7/38 | .029-.035 | .0250 | .0430 | .128 | .0120 | .0020 |
| | 28TC | 7/36 | .032-.038 | .0260 | .0430 | .128 | .0120 | .0020 |

| TABLE 3 | | | | |
|----------|-------------------|------|------|-------|
| SUPPLIED | REEL PART NUMBER | "K" | "L" | "M" |
| -R | R-24-05.00-0.75-P | 24.0 | 5.00 | 1.125 |

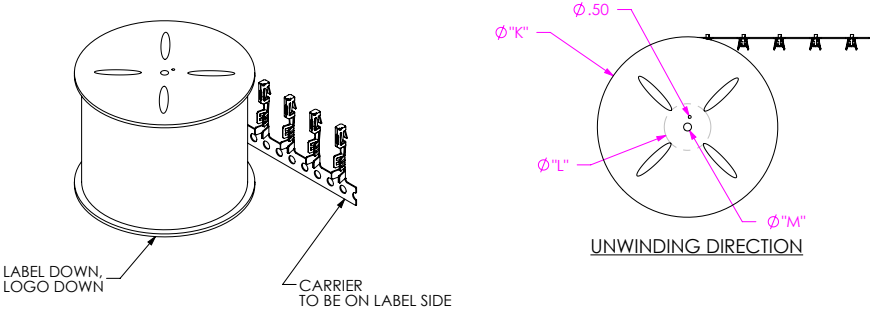



FIG 3
REEL SPECIFICATIONS

| | | | |
|---|--|---|--|
| F:\DWG\MISC\MKTG\CC79X-XXXX-XX-X-MKT.SLDDRW | | | |
| <p>PROPRIETARY NOTE</p> <p>THIS DOCUMENT CONTAINS CONFIDENTIAL AND PROPRIETARY INFORMATION AND ALL DESIGN, MANUFACTURING, REPRODUCTION, USE, PATENT RIGHTS AND SALES RIGHTS ARE EXPRESSLY RESERVED BY SAMTEC, INC. THIS DOCUMENT SHALL NOT BE DISCLOSED, IN WHOLE OR PART, TO ANY UNAUTHORIZED PERSON OR ENTITY NOR REPRODUCED, TRANSFERRED OR INCORPORATED IN ANY OTHER PROJECT IN ANY MANNER WITHOUT THE EXPRESS WRITTEN CONSENT OF SAMTEC, INC.</p> | |  <p>520 PARK EAST BLVD, NEW ALBANY, IN 47150 PHONE: 812-944-6733 FAX: 812-948-5047 e-Mail: info@SAMTEC.com code: 55322</p> | |
| <p>DO NOT SCALE DRAWING</p> <p>SHEET SCALE: 5:1</p> | | <p>DESCRIPTION: .100 IPD1 CONTACT</p> <p>DWG. NO. CC79X-XXXX-XX-X</p> | |
| <p>BY: DEAN P 8/12/2004</p> | | <p>SHEET 2 OF 2</p> | |