



**Distributor of Molex Connector Corporation: Excellent Integrated System Limited**  
Datasheet of 0190040005 - Connector Quick Connect Tab 14-16 AWG 0.250" (6.35mm) Crimp

Contact us: [sales@integrated-circuit.com](mailto:sales@integrated-circuit.com) Website: [www.integrated-circuit.com](http://www.integrated-circuit.com)

---

## **Excellent Integrated System Limited**

Stocking Distributor

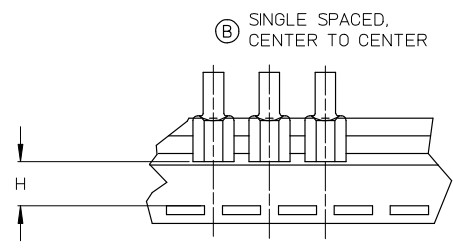
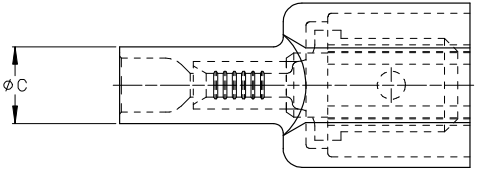
Click to view price, real time Inventory, Delivery & Lifecycle Information:

[Molex Connector Corporation](#)  
[0190040005](#)

For any questions, you can email us directly:

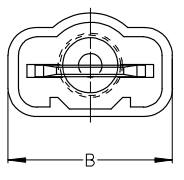
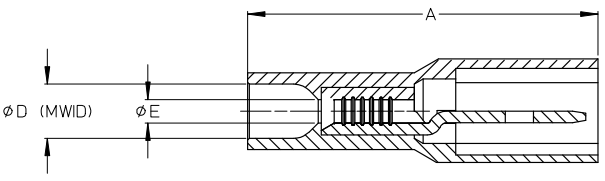
[sales@integrated-circuit.com](mailto:sales@integrated-circuit.com)

ASSEMBLY NUMBER		TAPE NUMBER		ITEM DESCRIPTION			DIMENSIONS					
MATERIAL NUMBER	ENGINEERING NUMBER	MATERIAL NUMBER	TAPE ENG. NUMBER	COLOR	WIRE GAUGE	TAB SIZE	'A' MAX	'B' MAX	'C' MAX	'D' MIN	'E' MIN	'H' REF
190040001	AA-2260	190040004	AA-2260T	RED	22-18 AWG (0.38-0.96mm <sup>2</sup> )	.250x.032 (6.35x0.81)	.97/24.6	.45/11.4	.23/5.8	.145/3.68	(B).054/1.37	.48/12.2
190040005	BB-2262	190040008	BB-2262T	BLUE	16-14 AWG (1.23-1.94 mm <sup>2</sup> )	.250x.032 (6.35x0.81)	.97/24.6	.45/11.4	.23/5.8	.170/4.32	.083/2.11	.48/12.2



(B) SINGLE SPACED, CENTER TO CENTER

TAPE MOUNTING DETAIL



- (B) NOTES:
1. TERMINAL MATERIAL: BRASS
  2. TERMINAL PLATING: ZINC CHROMATE
  3. HOUSING: 6/6 NYLON
  4. MWID: MAXIMUM WIRE INSULATION DIAMETER
  5. TAB DIMENSIONS CONFORM TO UL310 SPECIFICATIONS.
  6. ASSEMBLY IS ROHS COMPLIANT

REDRAW: MATERIALS EC NO: ETC2007-0081 CD: DRINKHILLE 2008/01/28 CHKD: JACQUELL 2008/01/28 APPR: JACQUELL 2008/02/15 REV:	QUALITY SYMBOLS	GENERAL TOLERANCES (UNLESS SPECIFIED)		DIMENSION STYLE IN/MM (B)		SCALE 4:1	DESIGN UNITS INCH	THIRD ANGLE PROJECTION	
	▽=0	mm	INCH	DRAWN BY EMF	DATE 1993/06/25	TITLE FULLY INSULATED MALE COUPLER, INSULKRIMP			
	▽=0	4 PLACES ±---	±---	CHECKED BY	DATE				
		3 PLACES ±---	±---	APPROVED BY		DATE	MOLEX INCORPORATED		
		2 PLACES ±---	±---	MATERIAL NO. SEE CHART		DOCUMENT NO. SD-19004-001			
	1 PLACE ±---	±---	DRAFT WHERE APPLICABLE MUST REMAIN WITHIN DIMENSIONS		SIZE B THIS DRAWING CONTAINS INFORMATION THAT IS PROPRIETARY TO MOLEX INCORPORATED AND SHOULD NOT BE USED WITHOUT WRITTEN PERMISSION				