

## Excellent Integrated System Limited

Stocking Distributor

Click to view price, real time Inventory, Delivery & Lifecycle Information:

[TE Connectivity AMP Connectors](#)  
[606297-2](#)

For any questions, you can email us directly:

[sales@integrated-circuit.com](mailto:sales@integrated-circuit.com)

4

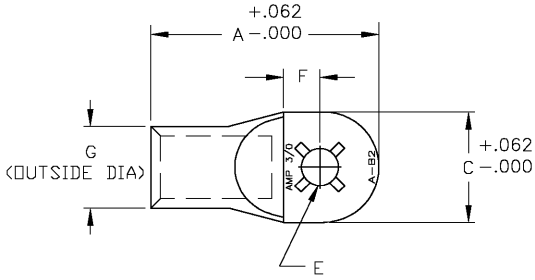
3

2

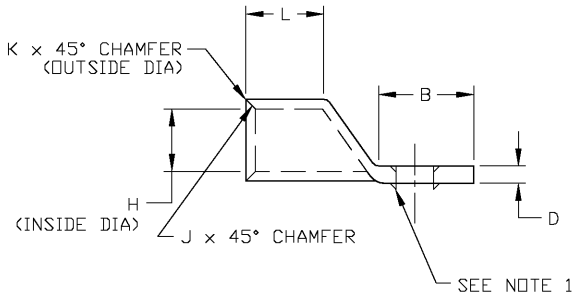
1

THIS DRAWING IS UNPUBLISHED. RELEASED FOR PUBLICATION  
 COPYRIGHT BY TYCO ELECTRONICS CORPORATION. ALL RIGHTS RESERVED.

| LDC |     | DIST                 |         | REVISIONS |      |  |  |
|-----|-----|----------------------|---------|-----------|------|--|--|
| P   | LTR | DESCRIPTION          | DATE    | DWN       | APVD |  |  |
| D   |     | REV PER 0G3A-008B-05 | 01JUN05 | JR        | MS   |  |  |



1. LOCKING LANCE FOR P/N -1 & -5 ONLY.



OBSOLETE

OBSOLETE

|                | .250 | .812 | .016 | .031 | .578 | .766 | .438 | ø.27 | .188 | 1.09 | .938 | 2.328       | 606297-5 |
|----------------|------|------|------|------|------|------|------|------|------|------|------|-------------|----------|
|                | .250 | .812 | .016 | .031 | .578 | .766 | .438 | ø.27 | .188 | 1.09 | .938 | 2.328       | 606297-4 |
| OBSOLETE       | .375 | .812 | .016 | .031 | .578 | .766 | .438 | ø.39 | .188 | 1.09 | .938 | 2.328       | 606297-3 |
|                | .500 | .812 | .016 | .031 | .578 | .766 | .438 | ø.52 | .188 | 1.09 | .938 | 2.328       | 606297-2 |
| OBSOLETE       | .375 | .812 | .016 | .031 | .578 | .766 | .438 | ø.39 | .188 | 1.09 | .938 | 2.328       | 606297-1 |
| BOLT HOLE SIZE | L    | K    | J    | H    | G    | F    | E    | D    | C    | B    | A    | PART NUMBER |          |

THIS DRAWING IS A CONTROLLED DOCUMENT.

|  |  |   |  |
|--|--|---|--|
| DIMENSIONS: INCHES                         | TOLERANCES UNLESS OTHERWISE SPECIFIED:<br>0 PLC ±<br>1 PLC ±<br>2 PLC ±.02<br>3 PLC ±.005<br>4 PLC ±.0005<br>ANGLES ±.3° | DWN L. HALL 18APR00<br>CHK L. H. SMITH 12MAY00<br>APVD R. ANTHONY 12MAY00 | Tyco Electronics Corporation<br>Harrisburg, Pa 17105-3608            |
| MATERIAL: HIGH CONDUCTIVITY WROUGHT COPPER | FINISH: ELECTRO TIN PLATE  | NAME: AMP TUBULAR TERMINAL 3/0 (ROUND TONGUE)<br>APPLICATION SPEC:        | SIZE: A3<br>CAGE CODE: 00779<br>DRAWING NO: 606297<br>RESTRICTED TO: |
| CUSTOMER DRAWING                           |  | SCALE: 1:1  | SHEET 1 OF 1 REV D   |