

## Excellent Integrated System Limited

Stocking Distributor

Click to view price, real time Inventory, Delivery & Lifecycle Information:

[C&K Components](#)

[PTS645VM39TR LFS](#)

For any questions, you can email us directly:

[sales@integrated-circuit.com](mailto:sales@integrated-circuit.com)

## PTS645-TR Series 6 mm Radial Tact Switches



### Features/Benefits

- *Radial taping*
- *Thru-hole or vertical actuation*
- *From 130 to 260 grams actuation force*
- *RoHS compliant and compatible*

### Typical Applications

- *Consumer products*
- *Instrumentation*
- *Computer product*
- *Industrial*

### Specification

FUNCTION: Momentary action

CONTACT ARRANGEMENT: SPST, N.O.

TERMINALS: PC pins

### Mechanical

ACTUATION FORCE: PTS645 models: 130 grams, 160 grams, 200 grams, 260 grams

LIFE EXPECTANCY: 100,000 operations.

### Electrical

CONTACT RATING: 50 mA @ 12 V DC.

DIELECTRIC STRENGTH: 250 V AC min.

CONTACT RESISTANCE: 100 mΩ max. initial.

INSULATION RESISTANCE: 10<sup>11</sup> Ω min.

### Environmental

OPERATING TEMPERATURE: -20°C to 70°C

STORAGE TEMPERATURE: -30°C to 80°C

### Process

SOLDERING: Preheating to 100°C for 45 sec. max. Keep flux flush with top surface of PCB; do not apply to component side of PCB and area where terminals are located. Soldering to 255°C for 5 sec. max. Clean by brushing on solder surface. Do not clean switch with solvents.

### Materials

BASE: 6/6 nylon or glass filled polyester (PBT) (UL 94V-0).

ACTUATOR: PPO (UL94V0)

COVER PLATE: PTS645S: Stainless steel tin plate.

PTS645V: Tin alloy or stainless steel.

DOMES CONTACTS: Phosphor bronze, silver clad.

STATIONARY CONTACTS: Brass, silver plated.

TERMINALS: Brass, silver plated. Insert molded.

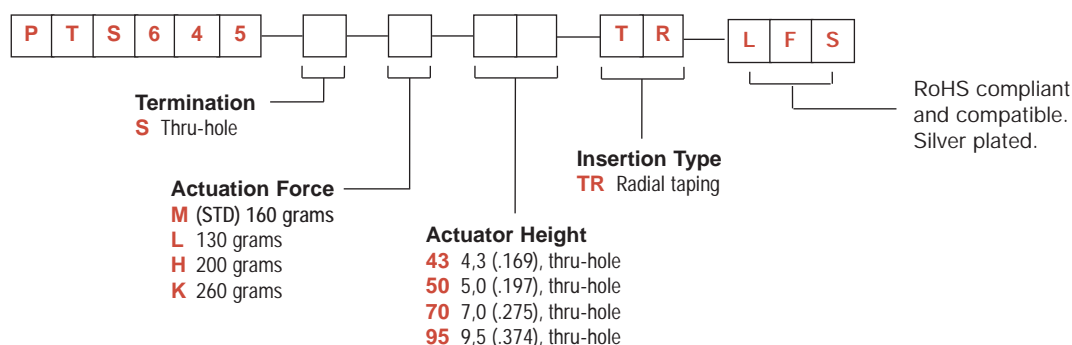
### Packaging

Radial taping in carton box, 1000 pieces.

**NOTE:** Specifications listed above are for switches with standard options.  
For information on specific and custom switches, consult Customer Service Center.

### How To Order

Our easy build-a-switch concept allows you to mix and match options to create the switch you need. To order, select desired option from each category and and place it in the appropriate box.

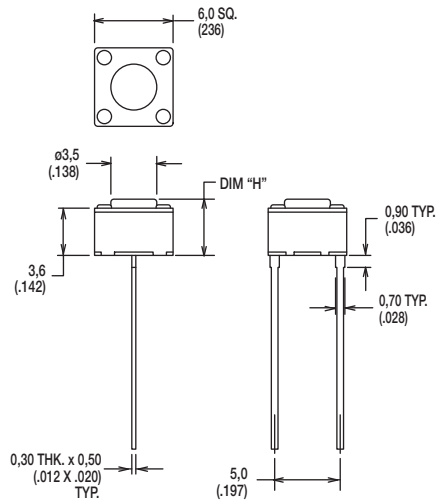


# PTS645-TR Series

## 6 mm Radial Tact Switches

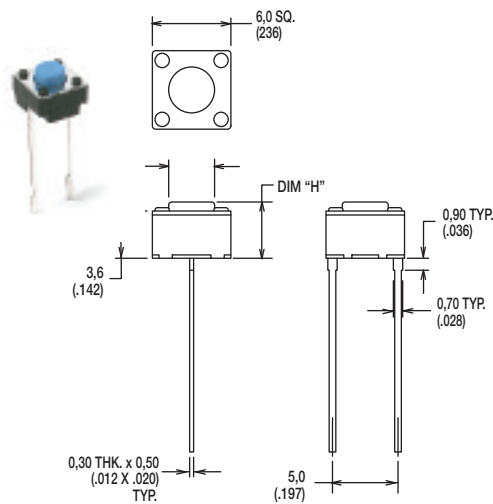
SERIES

PTS645

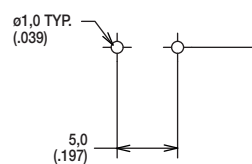


TERMINATION

**S** THRU-HOLE



PCB LAYOUT



ACTUATION FORCE

OPTION CODE	FORCE
<b>L</b>	130 grams
<b>M</b>	160 grams
<b>H</b>	200 grams
<b>K</b>	260 grams



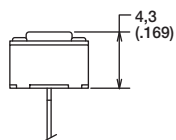
Dimensions shown in: mm (inch)  
Specifications and dimensions subject to change

www.ck-components.com

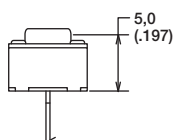
## PTS645-TR Series 6 mm Radial Tact Switches

### ACTUATOR HEIGHT

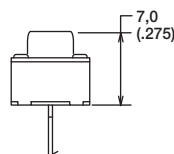
**43** 4,3 mm



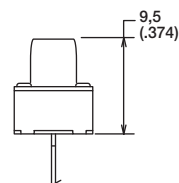
**50** 5,0 mm



**70** 7,0 mm

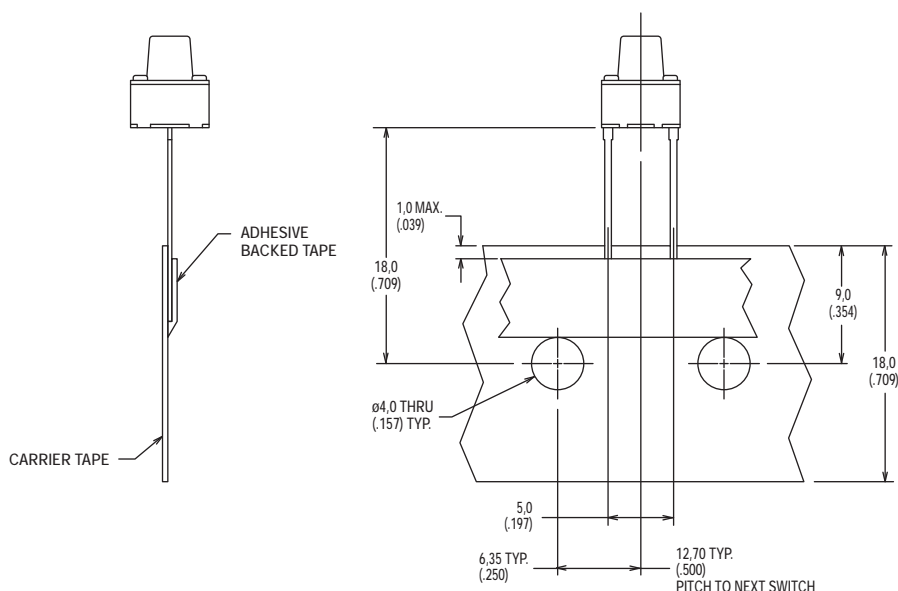


**95** 9,5 mm



### INSERTION TYPE

**TR** RADIAL TAPING



First Angle  
Projection

Dimensions shown in: mm (inch)  
Specifications and dimensions subject to change

[www.ck-components.com](http://www.ck-components.com)