

Excellent Integrated System Limited

Stocking Distributor

Click to view price, real time Inventory, Delivery & Lifecycle Information:

[TE Connectivity AMP Connectors](#)
[2-1103110-3](#)

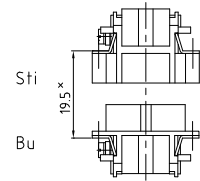
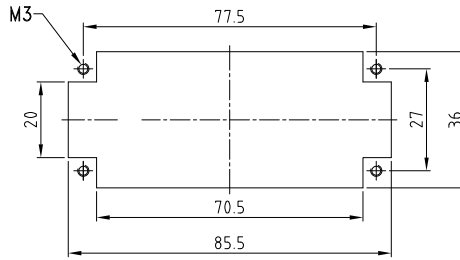
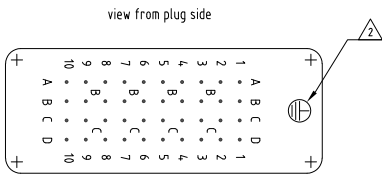
For any questions, you can email us directly:

sales@integrated-circuit.com

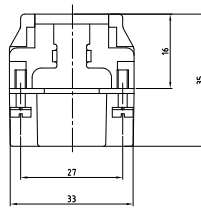
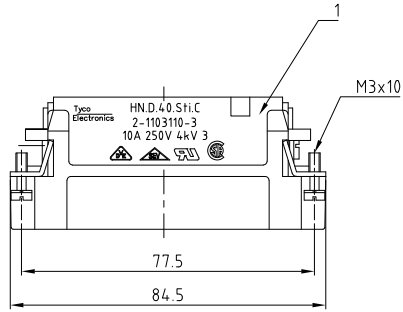
THIS DRAWING IS UNPUBLISHED. VERTRÄULICHE UNVERÖFFENTLICHTE ZEICHNUNG		RELEASED FOR PUBLICATION FREI FÜR VERÖFFENTLICHUNG		,1997		MATED WITH: PASSEND ZU		LOC		DIST		REVISIONS											
COPYRIGHT 1997		BY AMP INCORPORATED. ALLE RECHTE VORBEHALTEN		HN.D.40		AI		-		P		LTR		DESCRIPTION		DATE		DWN		APVD			
												PROJEKT NR.:		C2		ECR-09-026200		01.12.2009		SR		AR	

Panel cut-out for contact insert when used without housing

Montagehinweis

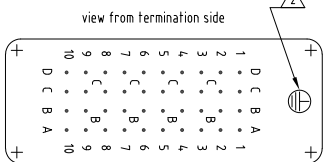


* Abstand für sichere Kontaktgabe max: 21 mm



NOTES

- 1 CONTACT: 1 - 40
- OUTER DIMENSION OF INSULATION: MAX. Ø4,3 MM
- 2 GROUNDING CONTACT CAN BE FIXED AT THIS POSITION.
- 3 SUITABLE HOOD SIZE 6: SERIES HB, HD, EMV, AND HIP
- 4 STANDARDS: DIN EN 61984; DIN EN 60664-1
- 5 PACKAGING: 5 PIECES IN A CARTON



1	MALE INSERT ASSY	PC	dark grey	1	-	REMARKS / BEMERKUNGEN	
2-3	DESCRIPTION / BENENNUNG	MATERIAL	COLOR / FARBE	ITEM NO. POS.			
5	THIS DRAWING IS A CONTROLLED DOCUMENT FOR AMP INCORPORATED. IT IS SUBJECT TO CHANGE AND THE CONTROLLING ENGINEERING DEPARTMENT SHOULD BE CONTACTED FOR THE LATEST REVISION. DIESER ZEICHNUNGSSTAND WIRD DURCH AMP INCORPORATED KONTROLLIERT. ANWENDER, DIE DEN TECHNISCHEN FORTSCHRITT BEWILLEN, SIND VORBEHALTEN. DEN JEWELIGEN LATESTEN ÄNDERUNGSSTAND ERHÄLTEN SIE AUF ANFRAGE.		DWV Schneider	12.08.1998	HTS Elektrotechnik		
	DIMENSIONS: mm		OTHERWISE SPECIFIED: ALL DIMENSIONAL TOLERANCES	12.08.1998	53819 Neunkirchen, Germany		
	0 PLC = -		1 PLC = -	2 PLC = -	3 PLC = -	NAME	
	MATERIAL		FINISH / OBERFLÄCHE / FARBE	PRODUCT SPEC		MALE INSERT ASSY	
ORDERING TEXT / BESTELLTXT		APVD		PRODUCT SPEC		SERIES HN.D.40 POS. CRIMP-TERMINATION	
HN.D.40 St1.C		114-74000		APPLICATION SPEC		DRAWING NO.	
		87 g		VERARBEITUNGSSPEZ.		ZEICHNUNGS-NR.	
		A3		WEIGHT		C=1103110	
		/KUNDENZEICHNUNG		GÉWICHT		RESTRICTED TO NUR FÜR	
		1:1		CUSTOMER DRAWING		-	
		1		/KUNDENZEICHNUNG		-	
		1		MASSSTAB		-	
		1		BLATT		-	
		1		OF VON		-	
		1		REV		-	
		C2		REV		-	