

Excellent Integrated System Limited

Stocking Distributor

Click to view price, real time Inventory, Delivery & Lifecycle Information:

[TE Connectivity AMP Connectors](#)
[208914-2](#)

For any questions, you can email us directly:

sales@integrated-circuit.com

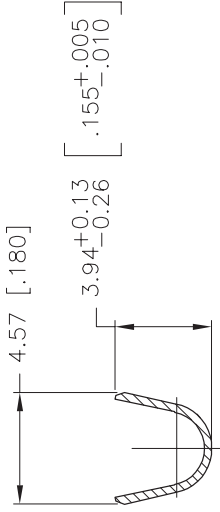
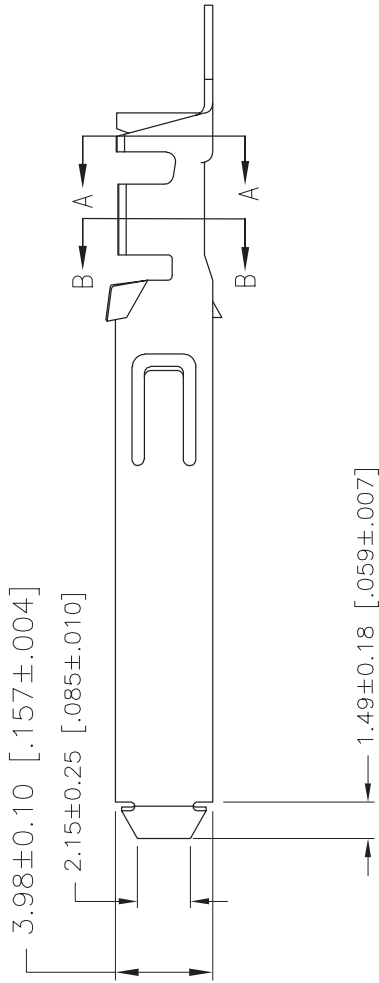
1

2

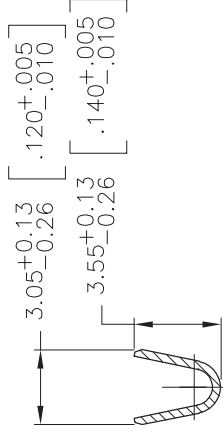
3

4

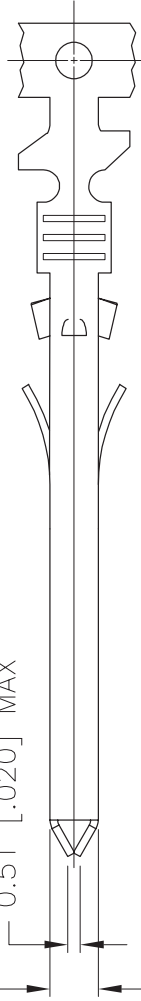
LOC		DIST		REVISED PER		DATE	
CM	0	0		21OCT05	KW	DB	
P		LTR		DESCRIPTION		REVISIONS	
C1							



SECTION A-A



SECTION B-B



TIN	208914-4
TIN-LEAD	208914-2
FINISH	PART NUMBER

- ACCOMMODATES 14 THRU 18 AWG WIRE INSULATION. RANGE 2.03 - 3.43 [.080 - .135] DIA.

THIS DRAWING IS A CONTROLLED DOCUMENT.		26OCT2005		26OCT2005		26OCT2005	
DWN K. WHITAKER		CHK D. BOSSI		APVD D. BOSSI		NAME	
DIMENSIONS: mm [INCHES]		TOLERANCES UNLESS OTHERWISE SPECIFIED:		APPLICATION SPEC		SIZE CAGE CODE DRAWING NO	
0 PLC ±		1 PLC ±		2 PLC ±		3 PLC ±	
4 PLC ±		ANGLES ±		WEIGHT		SCALE	
MATERIAL		FINISH		CUSTOMER DRAWING		REV C1	
-		-		-		5:1	
-		-		-		1 OF 1	
-		-		-		SHEET	
-		-		-		REV	
-		-		-		C1	

