



Distributor of Molex Connector Corporation: Excellent Integrated System Limited
Datasheet of 05-06-0304 - Connector Quick Connect Receptacle 14-22 AWG 0.187" (4.75mm)
Crimp

Contact us: sales@integrated-circuit.com Website: www.integrated-circuit.com

Excellent Integrated System Limited

Stocking Distributor

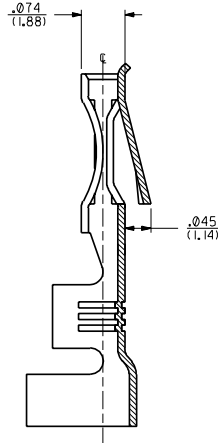
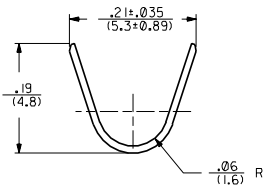
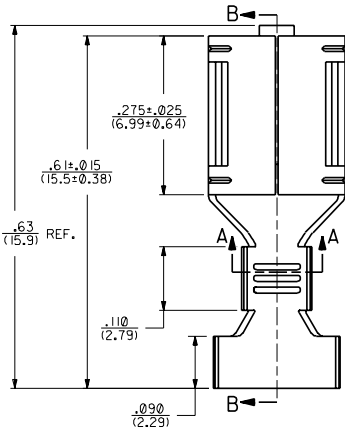
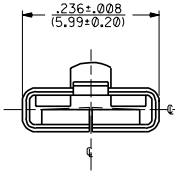
Click to view price, real time Inventory, Delivery & Lifecycle Information:

[Molex Connector Corporation](#)
[05-06-0304](#)

For any questions, you can email us directly:
sales@integrated-circuit.com

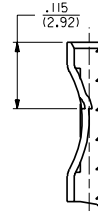
Contact us: sales@integrated-circuit.com Website: www.integrated-circuit.com

PART NO.	ENG. NO.	DESCRIPTION
05-06-0303	2176-AT	TIN PLATE
05-06-0303	2176-AT	WITHOUT DETENT, TIN PLATED
NOT TOOLED	X-2176-999A	WITHOUT DETENT, UNPLATED
05-06-0302	2176-(P90)DL	WITH DETENT, PLATED, LOOSE
05-06-0304	2176-(P90)DL	WITHOUT DETENT, PLATED, LOOSE



SECTION B-B

SCALE 8:1

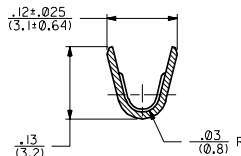


DETENT LOCATION

SCALE 8:1

NOTES:

1. CRIMP FOR #14 THRU #22 GA. WIRE. ALSO (2) #18 GA. WIRE WITH .031(0.79) THK. INSULATION.
2. MATERIAL: .010/(0.25) THK. 70/30 BRASS ALLOY. PRE-TIN PLATED.
3. PRODUCT SPECIFICATION 05-06-1 APPLIES.



SECTION A-A

SCALE 8:1

DIMENSIONS SHOWN METRIC INCH		TITLE		MFG. SH.		REV.		L.T.R.		REVISIONS	
UNLESS OTHERWISE SPECIFIED TOLERANCES ARE AS FOLLOWS		REVISE ONLY ON CAD SYSTEM		0		0					
3 PLACE ±	.010	TERMINAL FOR .020/(0.51) X .187/(4.75) SPADE								REDRAWN ON CAD PER UCR2000-0004 00/07/13 ES	
2 PLACE ±	.014										
1 PLACE	---										
DRAFT WHEN APPLICABLE MUST REMAIN WITHIN DIMENSIONS		SEE CHART		MOLLEX INCORPORATED		SHEET NO. 1 OF 1		DATE 92/10/26			
DRG. BY: MAB	CHKD. BY: KBP	SCALE: 8:1		PART NO. SD-2176-#		DRG. NO.					
APP'D. BY: RAS	SCALE: 8:1			FILE NAME: SD2176X1		THIS DRAWING CONTAINS INFORMATION THAT IS PROPRIETARY TO MOLLEX INC. AND SHOULD NOT BE USED WITHOUT WRITTEN PERMISSION.		TRK. FILE		CP C	