

Excellent Integrated System Limited

Stocking Distributor

Click to view price, real time Inventory, Delivery & Lifecycle Information:

[TE Connectivity AMP Connectors
606296-1](#)

For any questions, you can email us directly:

sales@integrated-circuit.com

4

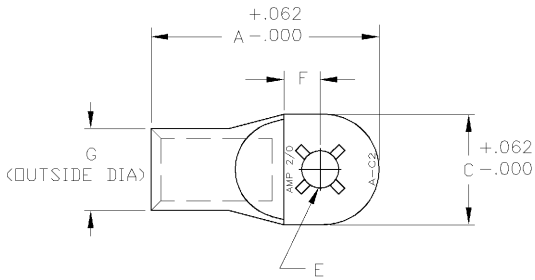
3

2

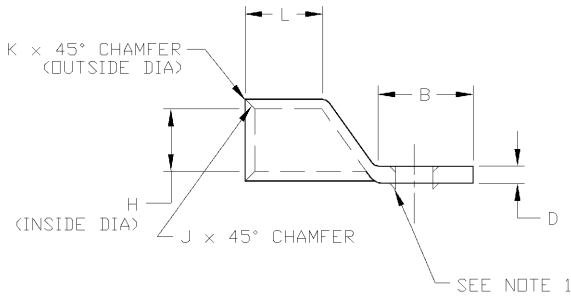
1

THIS DRAWING IS UNPUBLISHED. RELEASED FOR PUBLICATION .19
 © COPYRIGHT 19 BY AMP INCORPORATED. ALL RIGHTS RESERVED.

LOC	DIST	REVISIONS			
P	LTR	DESCRIPTION	DATE	DWN	APVD
AA	27	F	REDWN & REV; OG1Z-0010-99	12MAY00	LMH/LHS



1. LOCKING LANCE FOR P/N -1 ONLY



.375	.850	.016	.031	.490	.650	.565	ø.39	.170	.925	1.080	2.25	606296-3
.500	.850	.016	.031	.490	.650	.565	ø.515	.170	.925	1.080	2.25	606296-2
.375	.850	.016	.031	.490	.650	.565	ø.39	.170	.925	1.080	2.25	606296-1
BOLT HOLE SIZE	L	K	J	H	G	F	E	D	C	B	A	PART NUMBER

THIS DRAWING IS A CONTROLLED DOCUMENT.

DIMENSIONS: INCHES	TOLERANCES UNLESS OTHERWISE SPECIFIED: 0 PLC ± 1 PLC ± 2 PLC ±.02 3 PLC ±.005 4 PLC ±.0005 ANGLES ±.3°	DWN L.HALL 18APR00 CHK L.H. SMITH 12MAY00 APVD R. ANTHONY 12MAY00	AMP Incorporated Harrisburg PA 17105-3608
MATERIAL: HIGH CONDUCTIVITY WROUGHT COPPER	FINISH: ELECTRO TIN PLATE	NAME: AMP TUBULAR TERMINAL 2/0 (ROUND TONGUE)	RESTRICTED TO
APPLICATION SPEC		SIZE: A3	CAGE CODE: 00779
WEIGHT: -		DRAWING NO: 606296	SCALE: NTS
CUSTOMER DRAWING		SHEET: 1 OF 1	REV: F