

## Excellent Integrated System Limited

Stocking Distributor

Click to view price, real time Inventory, Delivery & Lifecycle Information:

[TE Connectivity Alcoswitch Switches  
1825121-1](#)

For any questions, you can email us directly:

[sales@integrated-circuit.com](mailto:sales@integrated-circuit.com)

1  
2  
3  
4

REVISONS		DATE	BY	APP'D
AD	00	29APR06	BSV	SM
DESCRIPTION				
ECO	05	006799		

SPECIFICATIONS:  
BREAK BEFORE MAKE

**MATERIALS:**

FRAME: STEEL,ZINC PLATE  
ACTUATOR: PBT,UL94HB,BLACK  
TERMINAL/FIXED CONTACT: COPPER ALLOY, AG OVER NI  
OR AU OVER NI PLATE.  
MOVING CONTACT: COPPER ALLOY, AG OVER NI  
OR AU OVER NI PLATE  
TERMINAL BOARD: PHENOLIC, UL94HB  
COIL SPRING: CARBON STEEL WIRE

**ELECTRICAL:**

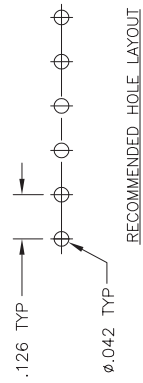
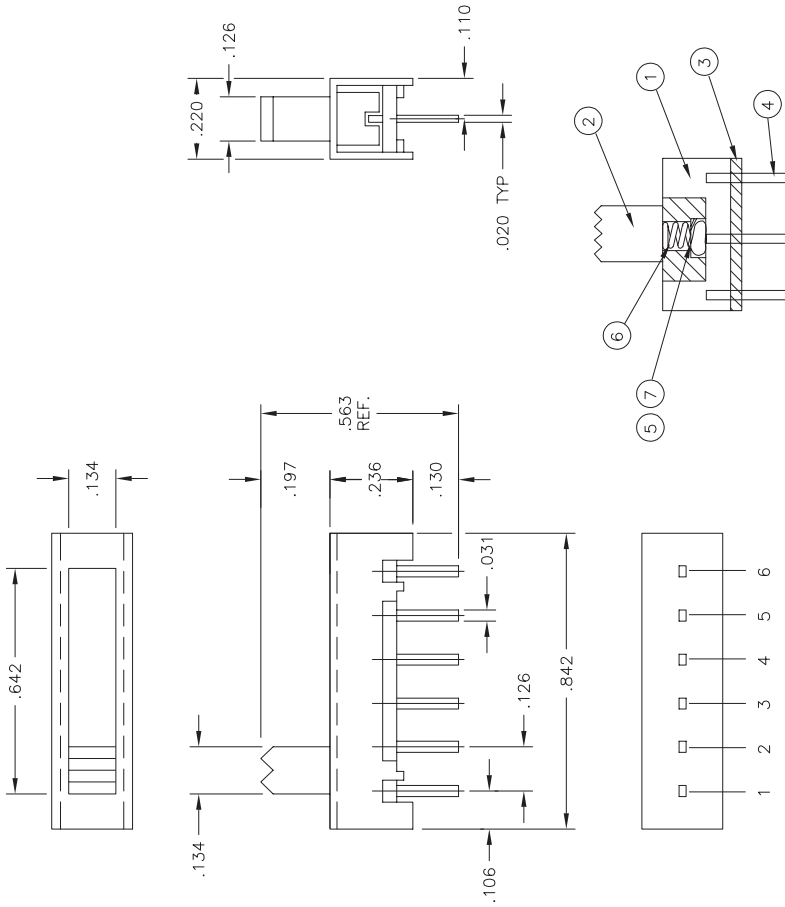
CONTACT RATING, 250MILLIAMPS @ 125V AC,  
150MILLIAMPS @ 12V DC  
CONTACT RESISTANCE, 30 MILLIOHMS MAX (INITIAL),  
60 MILLIOHMS AFTER TEST  
INSULATION RESISTANCE: 500 MEGOHMS MIN.  
DIELECTRIC STRENGTH: 500 VOLTS RMS @SEA LEVEL  
LIFE EXPECTANCY: 10,000 CYCLES MIN. NO LOAD,  
6,000 AT RATED CURRENT.

**MECHANICAL:**

ACTUATION FORCE, 250 +150/-100 GRAMS  
TRAVEL, .126 (3.20)  
ENVIRONMENTAL:  
OPERATING TEMPERATURE: -10°C TO +85°C  
STORAGE TEMPERATURE: -10°C TO +85°C  
RESISTANCE TO SOLDER HEAT, 260°C FOR 10 SEC  
PER 109-202, CONDITION B  
SOLDERABILITY PER EIA-364-56A, PROCEDURE 3,  
CONDITION B

**NOTE:**

1. ALL MATERIALS AND FINISHES SHALL COMPLY WITH EU DIRECTIVE 2002/95/EC OF 27 JAN2003 (ROHS)
2. ALL PERFORMANCE SPECIFICATIONS WERE TESTED IN ACCORDANCE WITH JIS-C-5441 UNLESS OTHERWISE STATED.



THIS DRAWING IS A CONTROLLED DOCUMENT.		DRAWN BY		CHECKED BY		DATE	
S. VISWESWARA		M. S. SAARVER					
APPROVED		PRODUCT SPEC		APPLICATION SPEC		WEIGHT	
OTHERWISE SPECIFIED:		FINISH		SIZE		DRAWING NO	
0 P/LC ±		ZINC		A2		1825121	
1 P/LC ±		AG		A2		1825121	
2 P/LC ±		AG		A2		1825121	
3 P/LC ±		AG		A2		1825121	
4 P/LC ±		AG		A2		1825121	
5 P/LC ±		AG		A2		1825121	
6 P/LC ±		AG		A2		1825121	
7 P/LC ±		AG		A2		1825121	
8 P/LC ±		AG		A2		1825121	
9 P/LC ±		AG		A2		1825121	
10 P/LC ±		AG		A2		1825121	
11 P/LC ±		AG		A2		1825121	
12 P/LC ±		AG		A2		1825121	
13 P/LC ±		AG		A2		1825121	
14 P/LC ±		AG		A2		1825121	
15 P/LC ±		AG		A2		1825121	
16 P/LC ±		AG		A2		1825121	
17 P/LC ±		AG		A2		1825121	
18 P/LC ±		AG		A2		1825121	
19 P/LC ±		AG		A2		1825121	
20 P/LC ±		AG		A2		1825121	
21 P/LC ±		AG		A2		1825121	
22 P/LC ±		AG		A2		1825121	
23 P/LC ±		AG		A2		1825121	
24 P/LC ±		AG		A2		1825121	
25 P/LC ±		AG		A2		1825121	
26 P/LC ±		AG		A2		1825121	
27 P/LC ±		AG		A2		1825121	
28 P/LC ±		AG		A2		1825121	
29 P/LC ±		AG		A2		1825121	
30 P/LC ±		AG		A2		1825121	
31 P/LC ±		AG		A2		1825121	
32 P/LC ±		AG		A2		1825121	
33 P/LC ±		AG		A2		1825121	
34 P/LC ±		AG		A2		1825121	
35 P/LC ±		AG		A2		1825121	
36 P/LC ±		AG		A2		1825121	
37 P/LC ±		AG		A2		1825121	
38 P/LC ±		AG		A2		1825121	
39 P/LC ±		AG		A2		1825121	
40 P/LC ±		AG		A2		1825121	
41 P/LC ±		AG		A2		1825121	
42 P/LC ±		AG		A2		1825121	
43 P/LC ±		AG		A2		1825121	
44 P/LC ±		AG		A2		1825121	
45 P/LC ±		AG		A2		1825121	
46 P/LC ±		AG		A2		1825121	
47 P/LC ±		AG		A2		1825121	
48 P/LC ±		AG		A2		1825121	
49 P/LC ±		AG		A2		1825121	
50 P/LC ±		AG		A2		1825121	
51 P/LC ±		AG		A2		1825121	
52 P/LC ±		AG		A2		1825121	
53 P/LC ±		AG		A2		1825121	
54 P/LC ±		AG		A2		1825121	
55 P/LC ±		AG		A2		1825121	
56 P/LC ±		AG		A2		1825121	
57 P/LC ±		AG		A2		1825121	
58 P/LC ±		AG		A2		1825121	
59 P/LC ±		AG		A2		1825121	
60 P/LC ±		AG		A2		1825121	
61 P/LC ±		AG		A2		1825121	
62 P/LC ±		AG		A2		1825121	
63 P/LC ±		AG		A2		1825121	
64 P/LC ±		AG		A2		1825121	
65 P/LC ±		AG		A2		1825121	
66 P/LC ±		AG		A2		1825121	
67 P/LC ±		AG		A2		1825121	
68 P/LC ±		AG		A2		1825121	
69 P/LC ±		AG		A2		1825121	
70 P/LC ±		AG		A2		1825121	
71 P/LC ±		AG		A2		1825121	
72 P/LC ±		AG		A2		1825121	
73 P/LC ±		AG		A2		1825121	
74 P/LC ±		AG		A2		1825121	
75 P/LC ±		AG		A2		1825121	
76 P/LC ±		AG		A2		1825121	
77 P/LC ±		AG		A2		1825121	
78 P/LC ±		AG		A2		1825121	
79 P/LC ±		AG		A2		1825121	
80 P/LC ±		AG		A2		1825121	
81 P/LC ±		AG		A2		1825121	
82 P/LC ±		AG		A2		1825121	
83 P/LC ±		AG		A2		1825121	
84 P/LC ±		AG		A2		1825121	
85 P/LC ±		AG		A2		1825121	
86 P/LC ±		AG		A2		1825121	
87 P/LC ±		AG		A2		1825121	
88 P/LC ±		AG		A2		1825121	
89 P/LC ±		AG		A2		1825121	
90 P/LC ±		AG		A2		1825121	
91 P/LC ±		AG		A2		1825121	
92 P/LC ±		AG		A2		1825121	
93 P/LC ±		AG		A2		1825121	
94 P/LC ±		AG		A2		1825121	
95 P/LC ±		AG		A2		1825121	
96 P/LC ±		AG		A2		1825121	
97 P/LC ±		AG		A2		1825121	
98 P/LC ±		AG		A2		1825121	
99 P/LC ±		AG		A2		1825121	
100 P/LC ±		AG		A2		1825121	
101 P/LC ±		AG		A2		1825121	
102 P/LC ±		AG		A2		1825121	
103 P/LC ±		AG		A2		1825121	
104 P/LC ±		AG		A2		1825121	
105 P/LC ±		AG		A2		1825121	
106 P/LC ±		AG		A2		1825121	
107 P/LC ±		AG		A2		1825121	
108 P/LC ±		AG		A2		1825121	
109 P/LC ±		AG		A2		1825121	
110 P/LC ±		AG		A2		1825121	
111 P/LC ±		AG		A2		1825121	
112 P/LC ±		AG		A2		1825121	
113 P/LC ±		AG		A2		1825121	
114 P/LC ±		AG		A2		1825121	
115 P/LC ±		AG		A2		1825121	
116 P/LC ±		AG		A2		1825121	
117 P/LC ±		AG		A2		1825121	
118 P/LC ±		AG		A2		1825121	
119 P/LC ±		AG		A2		1825121	
120 P/LC ±		AG		A2		1825121	
121 P/LC ±		AG		A2		1825121	
122 P/LC ±		AG		A2		1825121	
123 P/LC ±		AG		A2		1825121	
124 P/LC ±		AG		A2		1825121	
125 P/LC ±		AG		A2		1825121	
126 P/LC ±		AG		A2		1825121	
127 P/LC ±		AG		A2		1825121	
128 P/LC ±		AG		A2		1825121	
129 P/LC ±		AG		A2		1825121	
130 P/LC ±		AG		A2		1825121	
131 P/LC ±		AG		A2		1825121	
132 P/LC ±		AG		A2		1825121	
133 P/LC ±		AG		A2		1825121	
134 P/LC ±		AG		A2		1825121	
135 P/LC ±		AG		A2		1825121	
136 P/LC ±		AG		A2		1825121	
137 P/LC ±		AG		A2		1825121	
138 P/LC ±		AG		A2		1825121	
139 P/LC ±		AG		A2		1825121	
140 P/LC ±		AG		A2		1825121	
141 P/LC ±		AG		A2		1825121	
142 P/LC ±		AG		A2		1825121	
143 P/LC ±		AG		A2		1825121	
144 P/LC ±		AG		A2		1825121	
145 P/LC ±		AG		A2		1825121	
146 P/LC ±		AG		A2		1825121	
147 P/LC ±		AG		A2		1825121	
148 P/LC ±		AG		A2		1825121	
149 P/LC ±		AG		A2		1825121	
150 P/LC ±		AG		A2		1825121	
151 P/LC ±		AG		A2		1825121	
152 P/LC ±		AG		A2		1825121	
153 P/LC ±		AG		A2		1825121	
154 P/LC ±		AG		A2		1825121	
155 P/LC ±		AG		A2		1825121	
156 P/LC ±		AG		A2		1825121	
157 P/LC ±		AG		A2		1825121	
158 P/LC ±		AG		A2		1825121	
159 P/LC ±		AG		A2		1825121	
160 P/LC ±		AG		A2		1825121	
161 P/LC ±		AG		A2		1825121	
162 P/LC ±		AG		A2		1825121	
163 P/LC ±		AG		A2		1825121	
164 P/LC ±		AG		A2		1825121	
165 P/LC ±		AG		A2		1825121	
166 P/LC ±		AG		A2		1825121	
167 P/LC ±		AG		A2		1825121	
168 P/LC ±		AG		A2		1825121	
169 P/LC ±		AG		A2		1825121	
170 P/LC ±		AG		A2		1825121	
171 P/LC ±		AG		A2		1825121	
172 P/LC ±		AG		A2		1825121	
173 P/LC ±		AG		A2		1825121	
174 P/LC ±		AG		A2		1825121	
175 P/LC ±		AG		A2		1825121	
176 P/LC ±		AG		A2		1825121	
177 P/LC ±		AG		A2		1825121	
1							