

## Excellent Integrated System Limited

Stocking Distributor

Click to view price, real time Inventory, Delivery & Lifecycle Information:

[BUD Industries, Inc.](#)  
[CN-5700](#)

For any questions, you can email us directly:

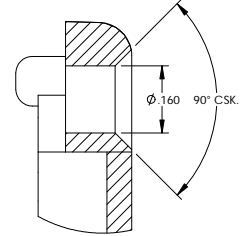
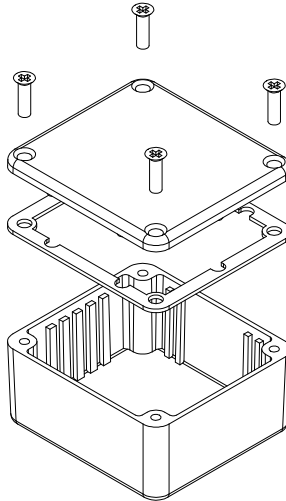
[sales@integrated-circuit.com](mailto:sales@integrated-circuit.com)

THE INFORMATION CONTAINED IN THIS DRAWING IS THE SOLE PROPERTY OF BUD INDUSTRIES INC. ANY REPRODUCTION IN PART OR WHOLE WITHOUT THE WRITTEN PERMISSION OF BUD INDUSTRIES INC. IS PROHIBITED.

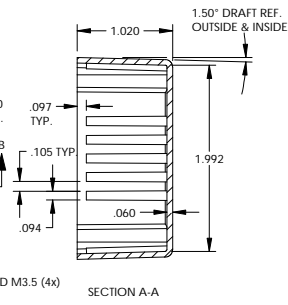
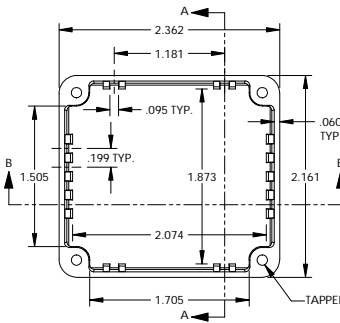
PART NO. CN-5700	
ISSUE	REVISIONS

MATERIAL - ALUMINUM ALLOY #ADC-12  
 FINISH - NATURAL (CONTACT BUD FACTORY FOR ALTERNATE FINISHES)  
 GASKET - RATED IP65 NEOPRENE, SELF-ADHESIVE, 3mm THICK, COLOR BLACK  
 SCREWS - STAINLESS STEEL, M3.5 x 12mm LG., CSK. HEAD, SELF-THREADING

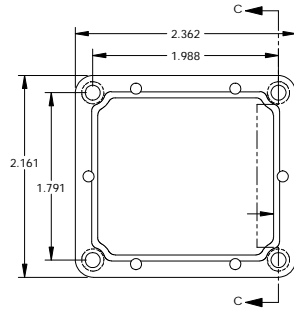
ALL HOLE DIAMETERS HAVE ±.005 TOLERANCE.  
 ALL OTHER DIMENSIONS HAVE ±.015 TOLERANCE.  
 ENCLOSURES ARE SHIPPED UNASSEMBLED WITH ALL ITEMS SHOWN.



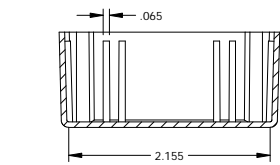
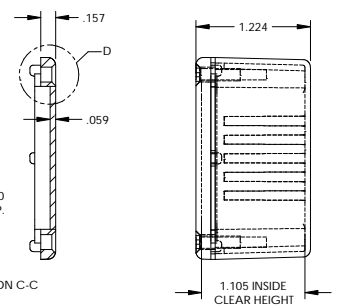
DETAIL D  
SCALE 6:1



BODY



COVER



SECTION B-B

PARTS LIST			
IF DIM BETWEEN HOLE CENTERS	CAD GENERATED DRAWING	<b>BUD INDUSTRIES INC.</b>	
IF DIM FROM HOLE EDGE	DO NOT MARKED DIMS	APPROVED	DATE
IF DIM FROM A BEND SURFACE	APPROVED	DAB	3-31-06
IF DIM BETWEEN ASSEMBLED SURFACES	AS NOTED	<b>DIE CAST ALUMINUM ENCLOSURE</b>	
UNLESS OTHERWISE SPECIFIED	AS NOTED	REV	
FINISH	APPROVED	C	CN-5700
DO NOT SCALE DRAWING		SCALE	CAD FILE
QTY	USED ON		