

Excellent Integrated System Limited

Stocking Distributor

Click to view price, real time Inventory, Delivery & Lifecycle Information:

[Digi International](#)
[20-101-0512](#)

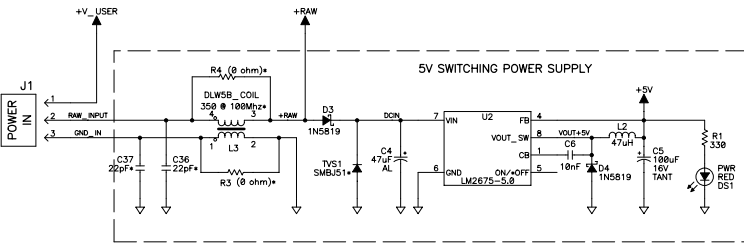
For any questions, you can email us directly:

sales@integrated-circuit.com

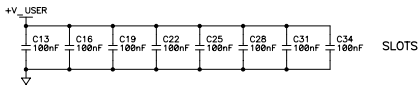
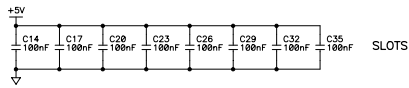
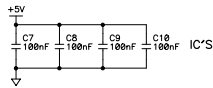
REVISION HISTORY			REVISION APPROVAL			
REV	ECO	DESCRIPTION	PROJECT ENGINEER	APPROVAL DATE	DOCUMENT CONTROL	APPROVAL DATE
A	E11833	INITIAL RELEASE				

TABLE A

REF DES	DEVICE	DEVICE VOLTAGE INFORMATION			DEVICE: FILTER CAP
		GND	+5V	NO CONNECTS	REF DES(S)
U2	LM2675-5.0			2,3	
U3	74VHC245	18	28		C7
U4	74VHC245	18	28		C8
U5	74VHC138	8	16		C9
U6	74VHC245	18	28		C18



Decoupling Capacitors



NOTES: UNLESS OTHERWISE SPECIFIED:

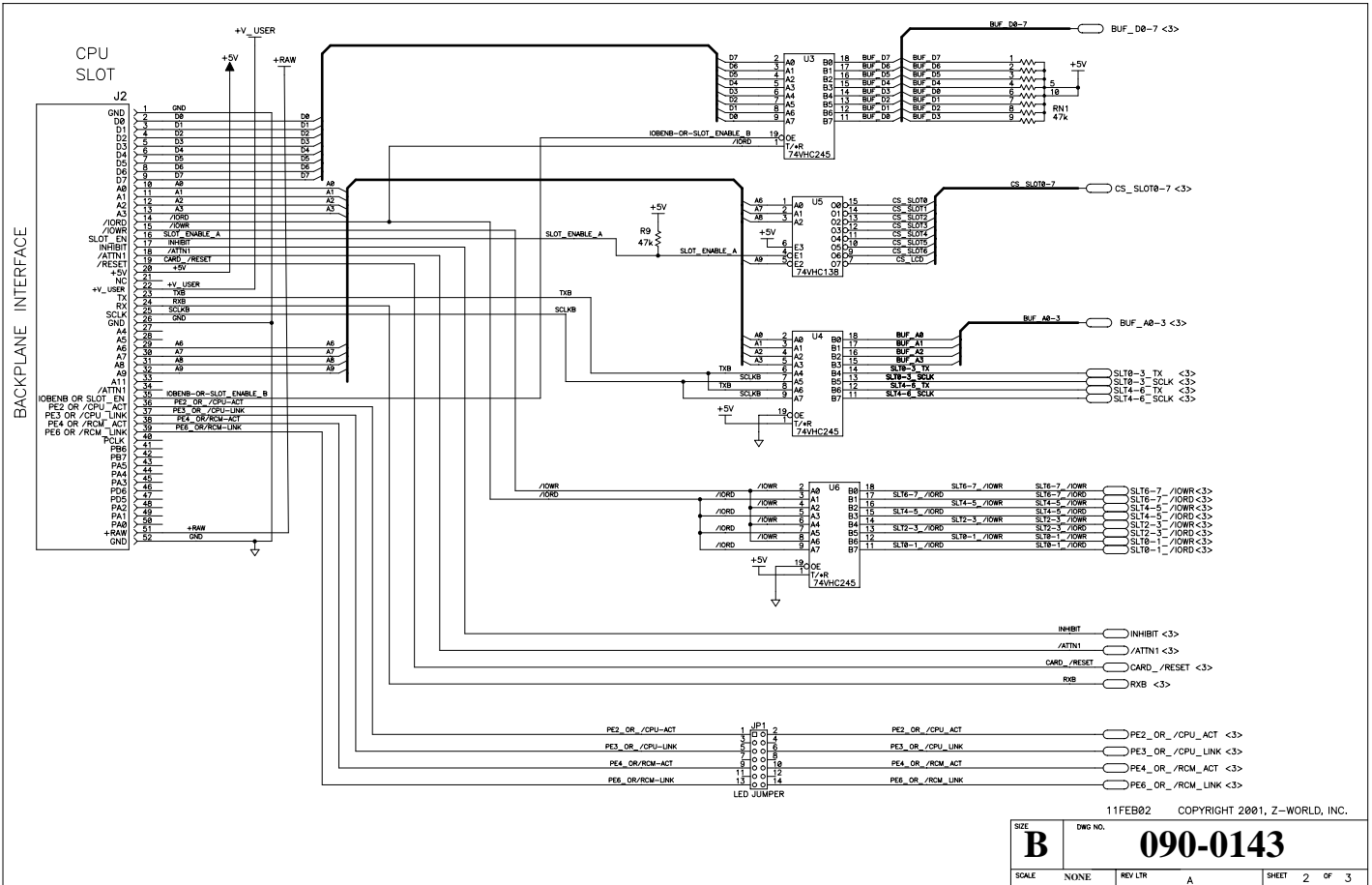
- ALL RESISTOR VALUES ARE IN OHMS, 1/10W, 5%.
- ALL CAPACITORS ARE 50VDC OR HIGHER.
- THE ORIGINATOR SOURCE OF A VOLTAGE IS REPRESENTED BY (▲), AND ALL REFERENCES TO THAT VOLTAGE ARE REPRESENTED BY (▽).
- COMPONENT VALUES SHOWN WITH AN ASTERISK (*) FOLLOWING THE VALUE, MAY HAVE DIFFERENT VALUES OR MAY NOT BE STUFFED DEPENDING ON MODEL. SEE STUFFING CHART FOR CLARIFICATION.

11FEB02 COPYRIGHT 2001, Z-WORLD, INC.

APPEND THE FOLLOWING DOCUMENTS WHEN CHANGING THIS DOCUMENT:		DRAWING CONTENT:		TITLE	 2900 SPAFFORD ST. DAVIS, CA 95616 530-757-4616
		DRAWN BY: (INITIAL RELEASE)	11FEB02		
		REVISED BY:			
		APPROVALS: INITIAL RELEASE		SIZE B	DWG NO. 090-0143
		PROJECT ENGINEER:			
		ENGINEERING MANAGER:		SCALE NONE	RELEASE DATE
		SIGNATURES	DATE		
				SHEET 1 OF 3	

STUFFING TABLE

	PART	SR9010 BACKPLANE
POWER SUPPLY CIRCUIT (PAGE 1)	R3, R4	ZERO OHM RES
	L3	NOT STUFFED
	C36	NOT STUFFED
	C37	NOT STUFFED
	TVS1	NOT STUFFED
TERMINATION RES (PAGE 3)	R2, R5	NOT STUFFED
LED JUMPER (PAGE 2)	JP1	1-2, 5-6, 9-10, 13-14



11FEB02 COPYRIGHT 2001, Z-WORLD, INC.

SIZE	DWG NO.	090-0143	
SCALE	NONE	REV LTR	A
		SHEET	2 OF 3

