

Excellent Integrated System Limited

Stocking Distributor

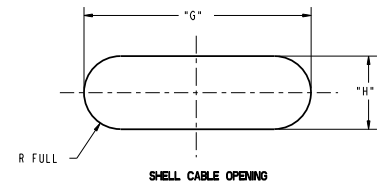
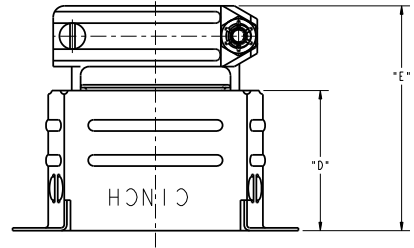
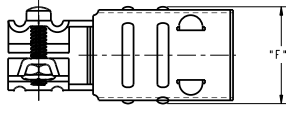
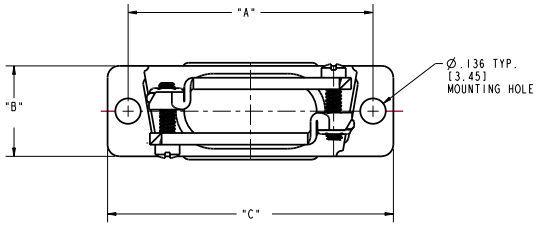
Click to view price, real time Inventory, Delivery & Lifecycle Information:

[Bel Fuse Inc.](#)
[DA-24658-31](#)

For any questions, you can email us directly:
sales@integrated-circuit.com

DRAWING REVISIONS

| REV | DOCUMENT | APP | DATE |
|-----|------------|-----|------|
| A | DO 05-1094 | | |



NOTES:
 1. MATERIALS:
 SHELL: STEEL, PLATING ZINC WITH CLEAR CHROMATE.
 CLAMP: STEEL, PLATING ZINC WITH CLEAR CHROMATE.
 SCREW: STEEL, PLATING ZINC WITH CLEAR CHROMATE.
 NUT: BRASS OR STEEL, PLATING ZINC WITH CLEAR CHROMATE.
 2. DIMENSIONS [] ARE IN MILLIMETERS.

| CATALOG NUMBER | PART NUMBER | DIM "A" | DIM "B" | DIM "C" | DIM "D" | DIM "E" | DIM "F" | DIM "G" | DIM "H" | |
|----------------|---------------|------------------|-----------------|------------------|-----------------|------------------|-----------------|-----------------------|----------------|------------------|
| DE-24657-30 | 702 49 09 005 | .984 [24.99] | .484 [12.29] | 1.203 [30.56] | .750 [19.05] | 1.219 [30.96] | .578 [14.68] | Ø .375 HOLE [9.53] | .312 [7.92] | |
| DA-24658-31 | 702 49 15 005 | 1.312 [33.32] | | 1.531 [38.89] | | 1.250 [31.75] | | | | .719 [18.26] |
| DB-24659-32 | 702 49 25 005 | 1.852 [47.04] | | 2.078 [52.78] | | 1.531 [38.89] | | | | 1.000 [25.40] |
| DC-24660-33 | 702 49 37 005 | 2.500 [63.50] | | 2.719 [69.06] | | 1.000 [25.40] | | | | 1.375 [34.93] |
| DD-24661-34 | 702 49 50 005 | 2.406 [61.11] | | .594 [15.09] | | 2.625 [66.68] | | | | 1.110 [28.19] |

ROHS COMPLIANT

| | | |
|----------------------|-------------------------------|-----------------------------|
| UNITS: ENGLISH | PRO/E | REGISTERED BY: L. J. SIKES |
| DO NOT SCALE DRAWING | DESIGNED BY: V. SKUZA | DATE: 5/11/05 |
| | DESIGN ENGINEER: A. BALI | 5/11/05 |
| | DESIGN ENGINEERING MGR. | |
| | MFG. ENGINEERING: A. SAUSKAS | 5/31/05 |
| | QUALITY ASSURANCE: A. VAZQUEZ | 5/31/05 |
| | CAD FILE NUMBER: DX-246XX-3X | DRAWING NUMBER: D*-246XX-3X |
| | CAGE IDENT NO: 71785 | SCALE: 2:1 |
| | | SHEET 1 OF 1 |

| | |
|---------------------------------------|--------------------------------------|
| Cinch | 1700 FINLEY RD LOMBARD, IL, 60148 |
| TITLE: JUNCTION SHELL AND CLAMP ASS'Y | CONTROL SPEC NUMBER |
| MATERIAL SPEC NUMBER | PROJECT NUMBER: C14716 |