

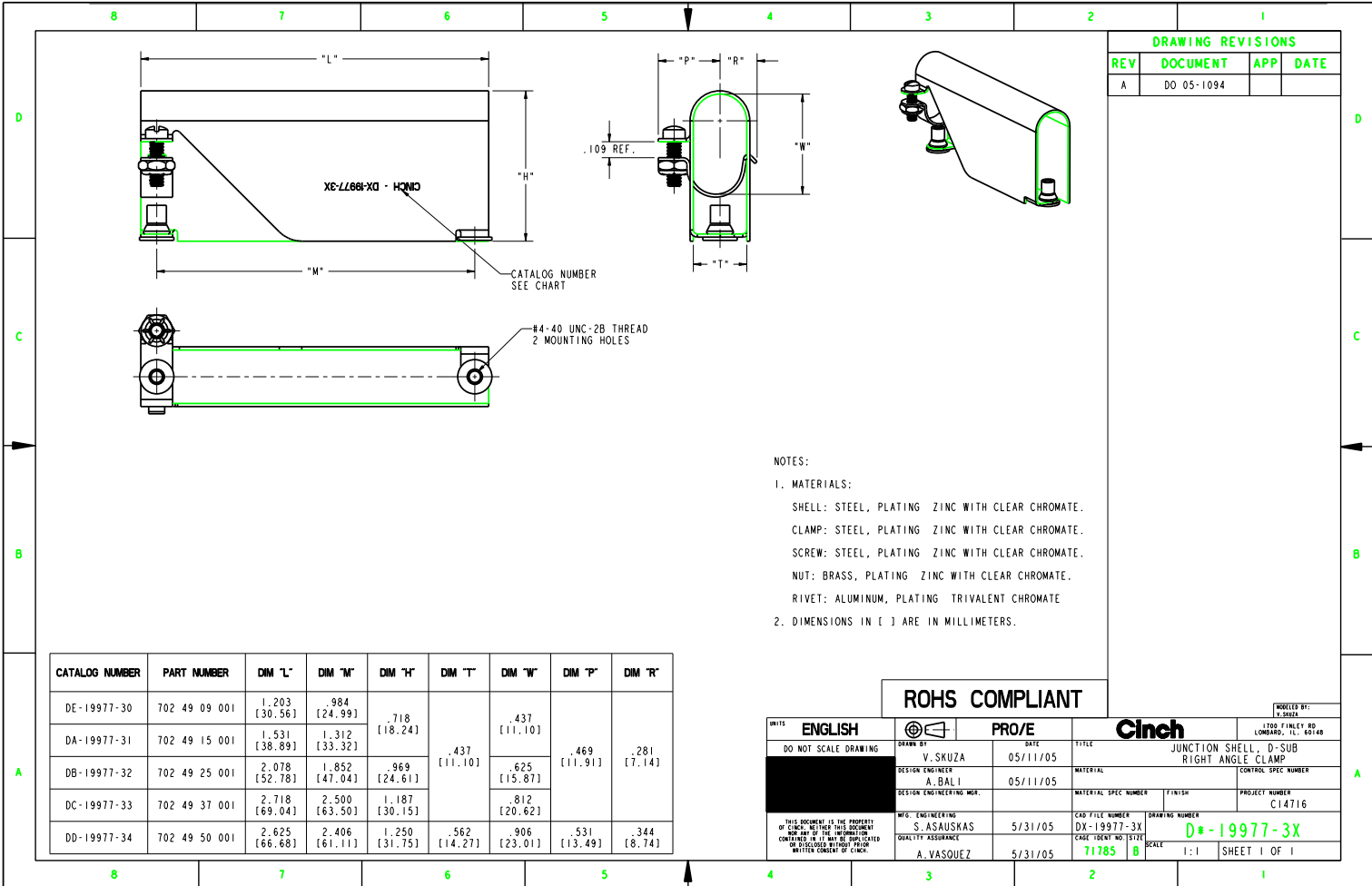
Excellent Integrated System Limited

Stocking Distributor

Click to view price, real time Inventory, Delivery & Lifecycle Information:

[Bel Fuse Inc.](#)
[DB-19977-32](#)

For any questions, you can email us directly:
sales@integrated-circuit.com



DRAWING REVISIONS			
REV	DOCUMENT	APP	DATE
A	DO 05-1094		

NOTES:
 1. MATERIALS:
 SHELL: STEEL, PLATING ZINC WITH CLEAR CHROMATE.
 CLAMP: STEEL, PLATING ZINC WITH CLEAR CHROMATE.
 SCREW: STEEL, PLATING ZINC WITH CLEAR CHROMATE.
 NUT: BRASS, PLATING ZINC WITH CLEAR CHROMATE.
 RIVET: ALUMINUM, PLATING TRIVALENT CHROMATE
 2. DIMENSIONS IN [] ARE IN MILLIMETERS.

ROHS COMPLIANT

UNITS	ENGLISH	PRO/E	REGISTERED BY: L. SPOSKO
DO NOT SCALE DRAWING	DESIGNED BY: V. SKUZA	DATE: 05/11/05	TITLE: JUNCTION SHELL - D-SUB RIGHT ANGLE CLAMP
	DESIGN ENGINEER: A. BALI	DATE: 05/11/05	MATERIAL SPEC NUMBER: CONTROL SPEC NUMBER
	DESIGN ENGINEERING MGR.:		MATERIAL SPEC NUMBER: FINISH: PROJECT NUMBER: C14716
	MFG. ENGINEERING: S. ASASKAS	DATE: 5/31/05	CAD FILE NUMBER: DRAWING NUMBER: DX-19977-3X
	QUALITY ASSURANCE: A. VASQUEZ	DATE: 5/31/05	CAGE IDENT NO. (STEP): SCALE: 71785 B 1:1
			D# - 19977-3X SHEET 1 OF 1