

Excellent Integrated System Limited

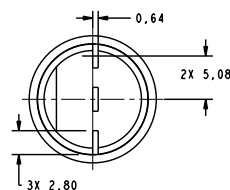
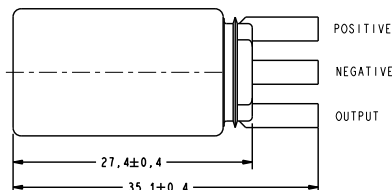
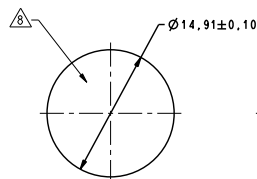
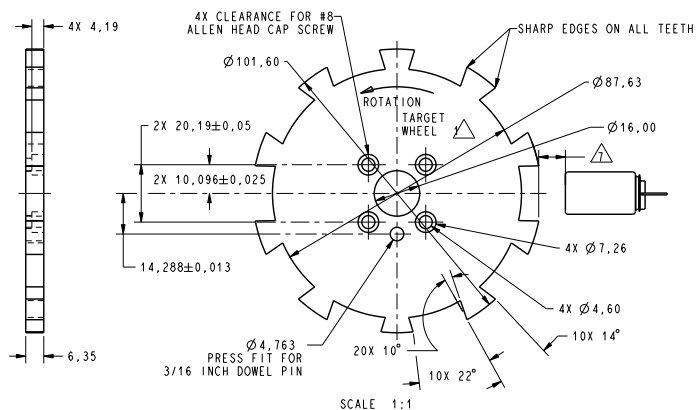
Stocking Distributor

Click to view price, real time Inventory, Delivery & Lifecycle Information:

[Honeywell Sensing and Productivity Solutions](#)
[1GP4001](#)

For any questions, you can email us directly:

sales@integrated-circuit.com



ABSOLUTE MAXIMUM RATINGS

SUPPLY VOLTAGE	+32V CONTINUOUS
VOLTAGE EXTERNALLY APPLIED TO OUTPUT	-0.5 TO +30V (OUTPUT HIGH)
OUTPUT CURRENT	40 mA SINKING
TEMP	150°C

RECOMMENDED OPERATING CONDITIONS

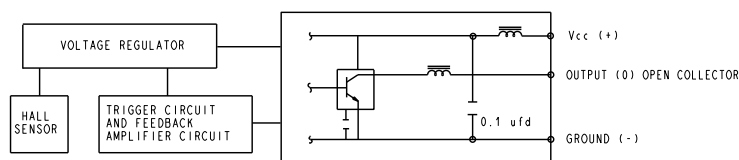
PARAMETER	CONDITIONS	MIN	TYP	MAX	UNITS
SUPPLY TEMPERATURE		-40		+150	°C
SUPPLY VOLTAGE		4.5		24	VDC
SUPPLY CURRENT			10	20	mA
OUTPUT VOLTAGE	LOW OUTPUT			0.4	VDC
OUTPUT CURRENT	LOW OUTPUT			20	mA
OUTPUT LEAKAGE CURRENT	HIGH OUTPUT		10	100	nA
RISE TIME	10% TO 90%			2.0	μS
FALL TIME	90% TO 10%			1.0	μS

OPERATING SPECIFICATIONS

	LIMIT	CONDITIONS	UNITS
4 OPERATE 5 RELEASE	2.75° ± 1.5° 3.0° ± 2.50°	AIR GAP 0.13 - 2.03 V SUPPLY 4.5-24 TEMP -40 TO 150 RPM 15 TO 3600	mm VOLTS DEG


NOTES

1. TARGET SHOULD BE MADE OF C-1018 STEEL OR ENGINEERING APPROVED
 EQUIVALENT, ANNEAL AFTER MACHINING OR FORMING
 2. MAX LIMITS THAT SWITCH WILL WITHSTAND WITHOUT DAMAGE
 3. OPERATING SPECIFICATION IS BASED ON TARGET SHOWN IN FIGURE 1
 AND WILL VARY WITH TARGET GEOMETRY
 4. OPERATOR (DEGREES) IS THE ANGULAR DISTANCE FROM THE LEADING EDGE
 OF THE TOOTH TO THE CENTERLINE OF THE SENSOR
 5. RELEASE (DEGREES) IS THE ANGULAR DISTANCE FROM THE TRAILING EDGE
 OF THE TOOTH TO THE CENTERLINE OF THE SENSOR
 6. ELECTRICAL CHARACTERISTICS ARE GUARANTEED WITH MAX EXTERNAL
 LOAD CAPACITANCE < 550 pfd
 7. AIR GUN IS THE DISTANCE FROM SENSOR FACE TO TARGET
 8. CATALOG LISTING: DATE CODE AND SERIAL NUMBER LOCATED IN THIS AREA
 9. RELIABILITY AND EMI PERFORMANCE IS BASED ON TS 060 234
 10. WITHOUT AN OUTPUT CAPACITOR THERE IS A RIPLE ON THE OUTPUT SIGNAL
 WITH A HIGH TO LOW TRANSITION WHICH CAN PRODUCE A FALSE TRIGGER WITH
 SOME APPLICATIONS. IT IS RECOMMEND THAT A CAPACITOR BE ADDED TO THE
 OUTPUT LINE TO REDUCE THE IMPACT OF THIS RIPLE
 11. FOR VALUE, ADDRESSED ASSEMBLY CONSIDERATIONS, REFERENCE APPLICATION NOTE PK-80139



BLOCK DIAGRAM SHOWING CURRENT SINKING OUTPUT



THIRD ANGLE PROJECTION	
	
SCALE 3 : 1	
DO NOT SCALE PRINT	
UNLESS OTHERWISE SPECIFIED TOLERANCES ARE	
NO PLACE	(0) \pm 1 MM
ONE PLACE	(0,0) \pm 0,4 MM
TWO PLACE	(0,00) \pm 0,15 MM
ANGLES	\pm
WEIGHT	

THIS DRAWING COVERS A PROPRIETARY ITEM AND IS THE PROPERTY OF MICRO SWITCH, A DIVISION OF HONEYWELL. THIS DRAWING IS NOT TO BE COPIED OR USED WITHOUT THE APPROVAL OF MICRO SWITCH

MICRO SWITCH
a Honeywell Division

GEARTOOTH SENSOR

1GP4004

ANSI Y14.5M-1982 APPLIES