

Excellent Integrated System Limited

Stocking Distributor

Click to view price, real time Inventory, Delivery & Lifecycle Information:

[RFMD](#)
[RF3374TR7](#)

For any questions, you can email us directly:

sales@integrated-circuit.com



rfmd.com

RF3374

GENERAL PURPOSE AMPLIFIER

RoHS Compliant & Pb-Free Product
Package Style: SOT89

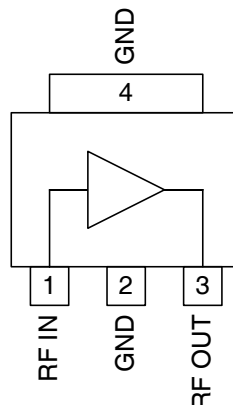


Features

- DC to >6000MHz Operation
- Internally Matched Input and Output
- 20dB Small Signal Gain
- +32dBm Output IP3
- +18dBm Output Power

Applications

- Basestation Applications
- Broadband, Low-Noise Gain Blocks
- IF or RF Buffer Amplifiers
- Driver Stage for Power Amplifiers
- Final PA for Low-Power Applications
- High Reliability Applications



Functional Block Diagram

Product Description

The RF3374 is a general purpose, low-cost RF amplifier IC. The device is manufactured on an advanced Gallium Arsenide Heterojunction Bipolar Transistor (HBT) process, and has been designed for use as an easily-cascadable 50Ω gain block. Applications include IF and RF amplification in wireless voice and data communication products operating in frequency bands up to 6000MHz. The device is self-contained with 50Ω input and output impedances and requires only two external DC-biasing elements to operate as specified.

Ordering Information

RF3374	General Purpose Amplifier
RF3374PCBA-410	Fully Assembled Evaluation Board

Optimum Technology Matching® Applied

- | | | | |
|--|--------------------------------------|-------------------------------------|-----------------------------------|
| <input checked="" type="checkbox"/> GaAs HBT | <input type="checkbox"/> SiGe BiCMOS | <input type="checkbox"/> GaAs pHEMT | <input type="checkbox"/> GaN HEMT |
| <input type="checkbox"/> GaAs MESFET | <input type="checkbox"/> Si BiCMOS | <input type="checkbox"/> Si CMOS | |
| <input type="checkbox"/> InGaP HBT | <input type="checkbox"/> SiGe HBT | <input type="checkbox"/> Si BJT | |

RF MICRO DEVICES®, RFMD®, Optimum Technology Matching®, Enabling Wireless Connectivity™, PowerStar®, POLARIS™ TOTAL RADIO™ and UltimateBlue™ are trademarks of RFMD, LLC. BLUETOOTH is a trademark owned by Bluetooth SIG, Inc., U.S.A. and licensed for use by RFMD. All other trade names, trademarks and registered trademarks are the property of their respective owners. ©2006, RF Micro Devices, Inc.

RF3374



Absolute Maximum Ratings

Parameter	Rating	Unit
Input RF Power	+13	dBm
Operating Ambient Temperature	-40 to +85	°C
Storage Temperature	-60 to +150	°C



Caution! ESD sensitive device.

Exceeding any one or a combination of the Absolute Maximum Rating conditions may cause permanent damage to the device. Extended application of Absolute Maximum Rating conditions to the device may reduce device reliability. Specified typical performance or functional operation of the device under Absolute Maximum Rating conditions is not implied.

RoHS status based on EUDirective 2002/95/EC (at time of this document revision).

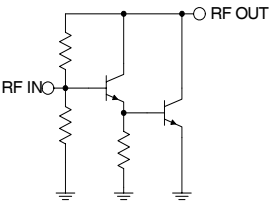
The information in this publication is believed to be accurate and reliable. However, no responsibility is assumed by RF Micro Devices, Inc. ("RFMD") for its use, nor for any infringement of patents, or other rights of third parties, resulting from its use. No license is granted by implication or otherwise under any patent or patent rights of RFMD. RFMD reserves the right to change component circuitry, recommended application circuitry and specifications at any time without prior notice.

Parameter	Specification			Unit	Condition
	Min.	Typ.	Max.		
Overall					T=25 °C, I _{CC} =65mA (See Note 1.)
Frequency Range		DC to >6000		MHz	
3dB Bandwidth		3		GHz	
Gain	18.7	20.5		dB	Freq=500MHz
	18.5	20.2	21.0	dB	Freq=1000MHz
	17.0	18.9	22.0	dB	Freq=2000MHz
		17.6		dB	Freq=3000MHz
		16.2			Freq=4000MHz
		13.5			Freq=6000MHz
Noise Figure		3.5		dB	Freq=2000MHz
Input VSWR		<1.5:1			In a 50Ω system, 500MHz to 3500MHz
		<2:1			In a 50Ω system, 3500MHz to 5000MHz
Output VSWR		<1.6:1			In a 50Ω system, 500MHz to 3000MHz
		<2:1			In a 50Ω system, 3000MHz to 5000MHz
Output IP ₃	+29.0	+32.0		dBm	Freq=2000MHz
Output P _{1dB}		+17.5		dBm	Freq=2000MHz
Reverse Isolation		22.0		dB	Freq=2000MHz
Thermal					I _{CC} =65mA, P _{DISS} =274mW. (See Note 3.)
Theta _{JC}		170		°C/W	V _{PIN} =4.2V
Maximum Measured Junction Temperature at DC Bias Conditions		132		°C	T _{CASE} =+85 °C
Mean Time To Failure		3050		years	T _{CASE} =+85 °C
Power Supply					With 22Ω bias resistor
Device Operating Voltage		4.50	4.55	V	At pin 8 with I _{CC} =65mA at +25 °C
		5.95	6.30	V	At evaluation board connectors, I _{CC} =65mA
Operating Current		65	80	mA	See Note 2.

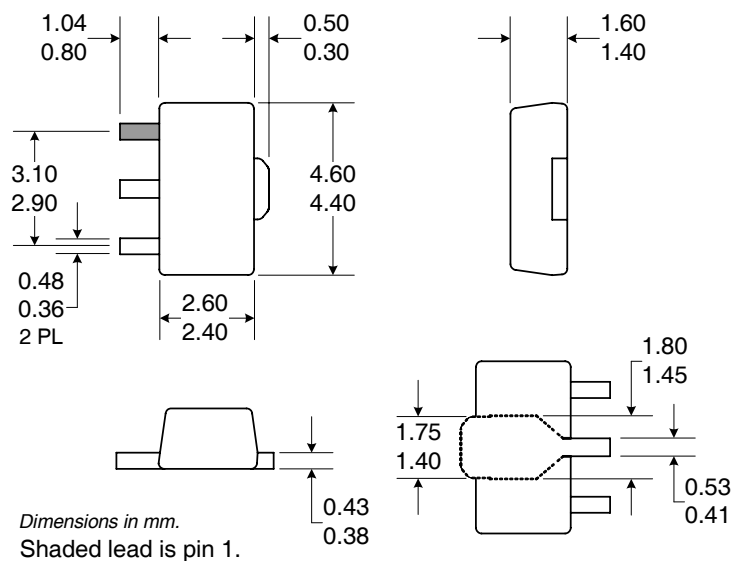
Note 1: All specification and characterization data has been gathered on standard FR-4 evaluation boards. These evaluation boards are not optimized for frequencies above 2.5GHz. Performance above 2.5GHz may improve if a high performance PCB is used.

Note 2: The RF3374 must be operated at or below 80mA in order to achieve the thermal performance listed above. While the RF3374 may be operated at higher bias currents, 65mA is the recommended bias to ensure the highest possible reliability and electrical performance.

Note 3: Because of process variations from part to part, the current resulting from a fixed bias voltage will vary. As a result, caution should be used in designing fixed voltage bias circuits to ensure the worst case bias current does not exceed 80mA over all intended operating conditions.

Pin	Function	Description	Interface Schematic
1	RF IN	RF input pin. This pin is NOT internally DC blocked. A DC blocking capacitor, suitable for the frequency of operation, should be used in most applications. DC coupling of the input is not allowed, because this will override the internal feedback loop and cause temperature instability.	
2	GND	Ground connection.	
3	RF OUT	RF output and bias pin. Biasing is accomplished with an external series resistor and choke inductor to V_{CC} . The resistor is selected to set the DC current into this pin to a desired level. The resistor value is determined by the following equation: $R = \frac{(V_{SUPPLY} - V_{DEVICE})}{I_{CC}}$ Because DC is present on this pin, a DC blocking capacitor, suitable for the frequency of operation, should be used in most applications. The supply side of the bias network should also be well bypassed. Care should also be taken in the resistor selection to ensure that the current into the part never exceeds 80mA over the planned operating temperature.	
4	GND	Ground connection.	

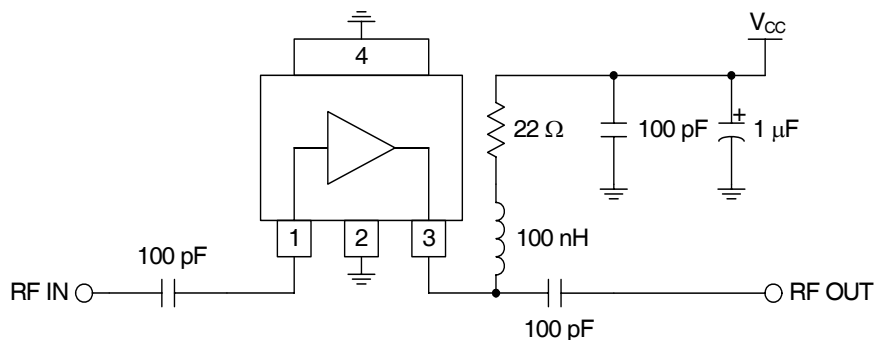
Package Drawing



RF3374

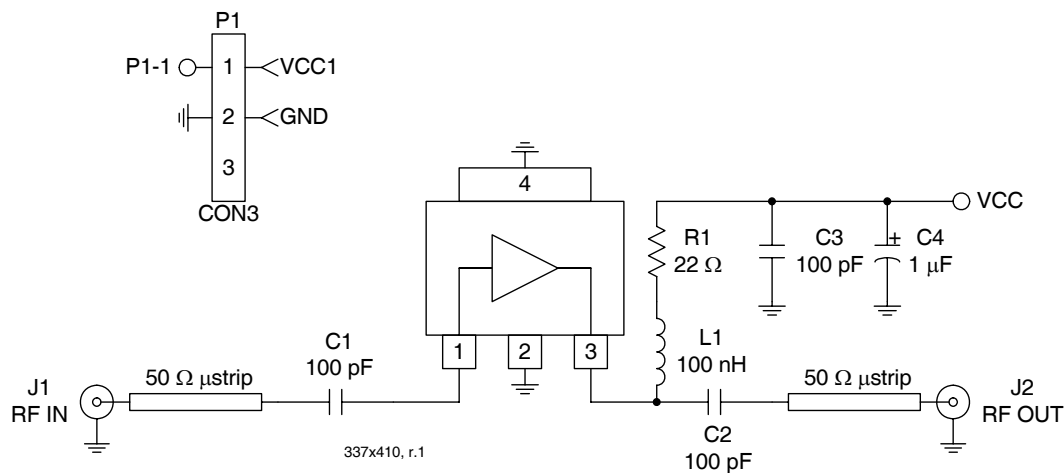


Application Schematic

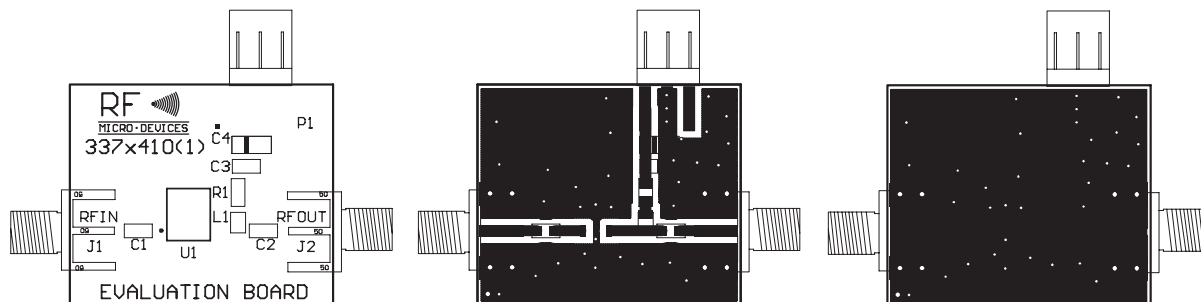


Evaluation Board Schematic

(Download [Bill of Materials](http://www.rfmd.com) from www.rfmd.com.)



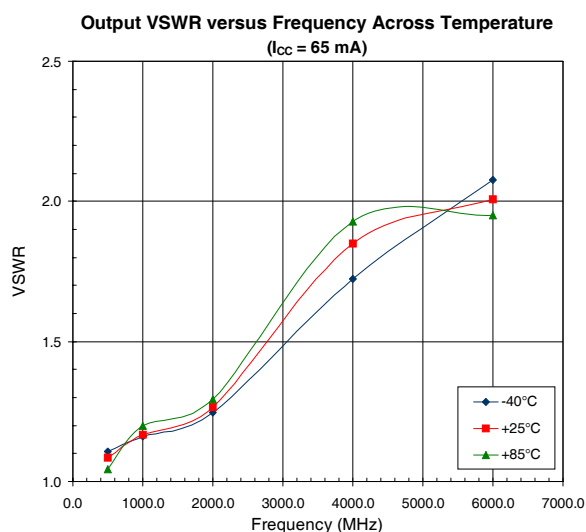
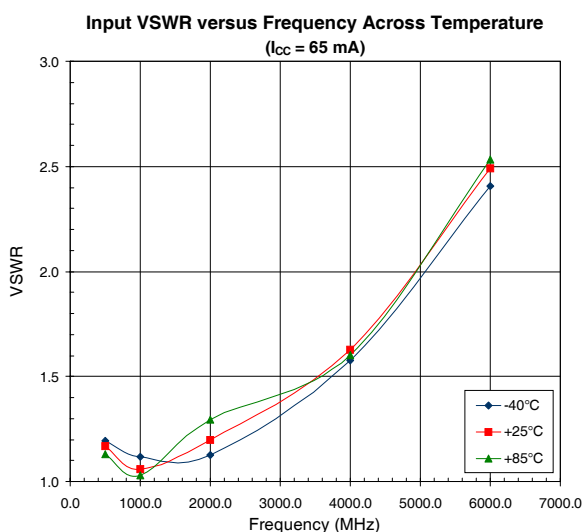
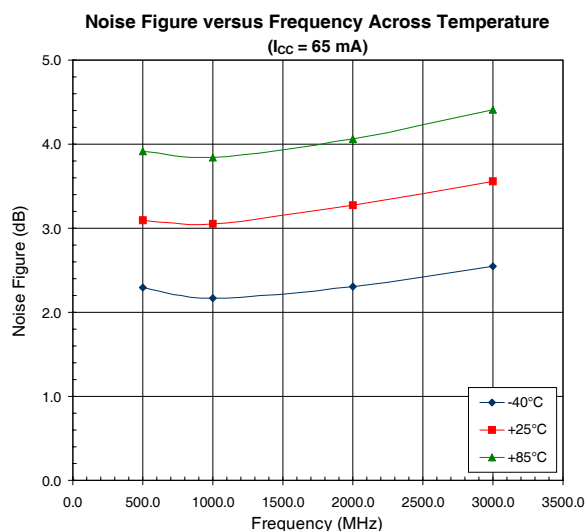
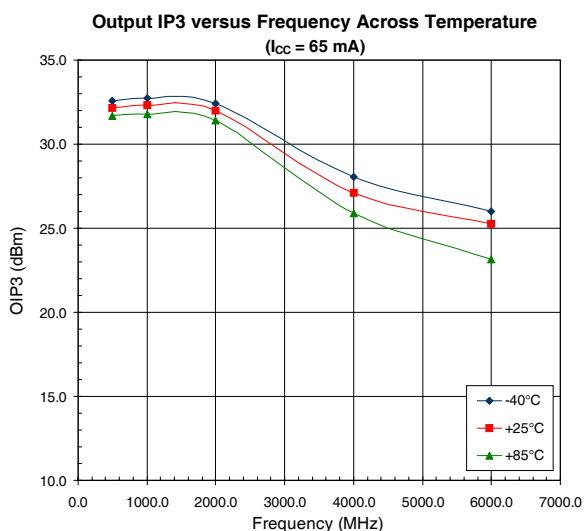
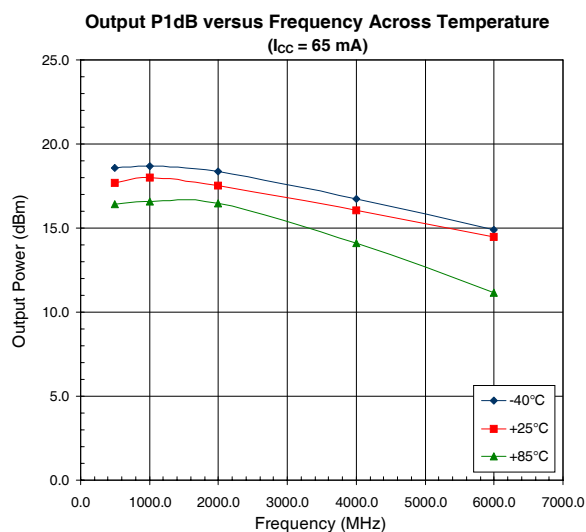
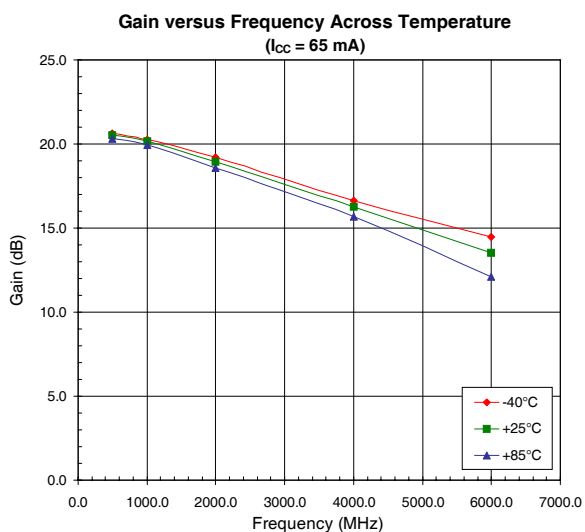
Evaluation Board Layout
Board Size 1.195" x 1.000"
Board Thickness 0.033", Board Material FR-4



RF3374



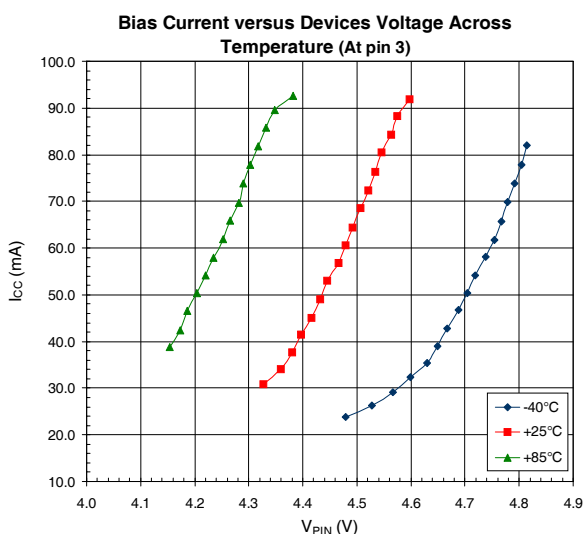
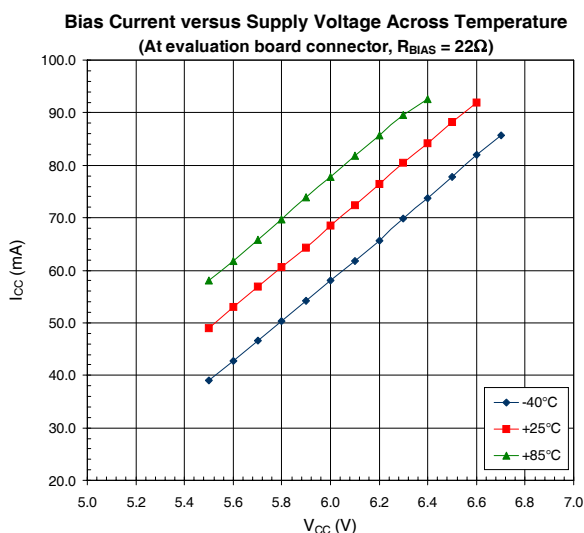
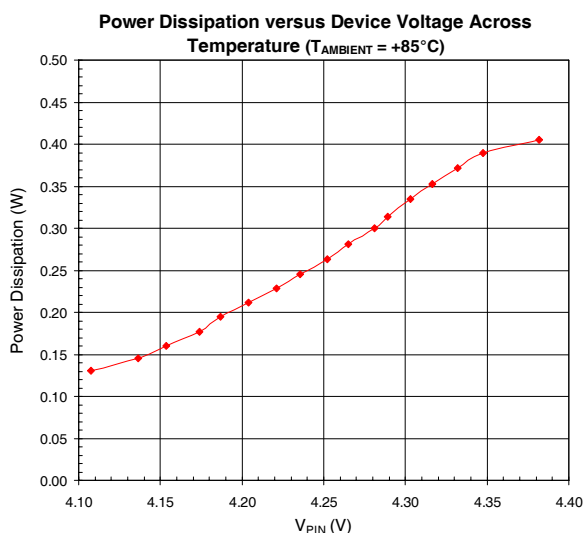
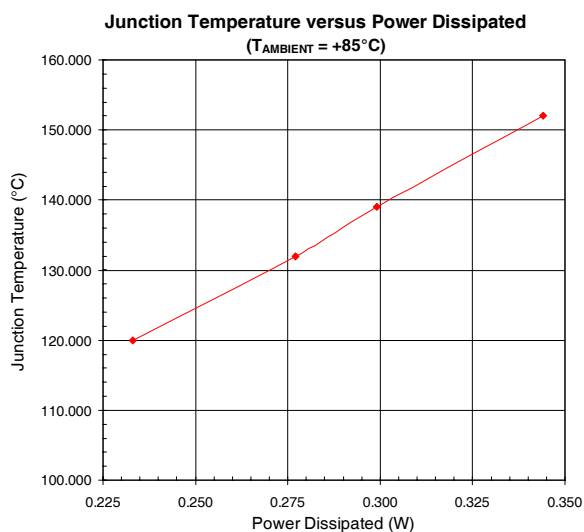
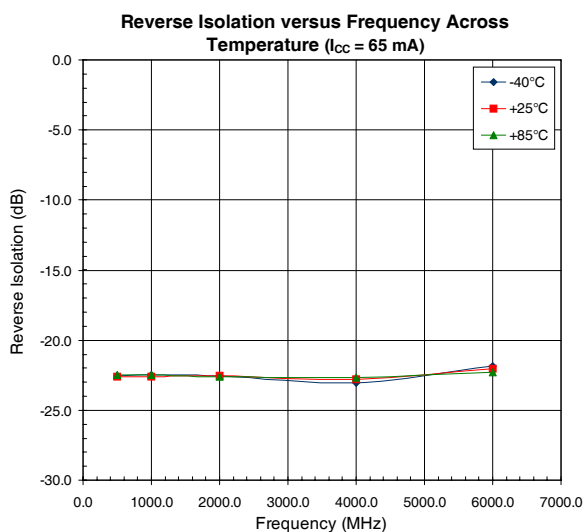
rfmd.com





rfmd.com

RF3374



RF3374

