

Excellent Integrated System Limited

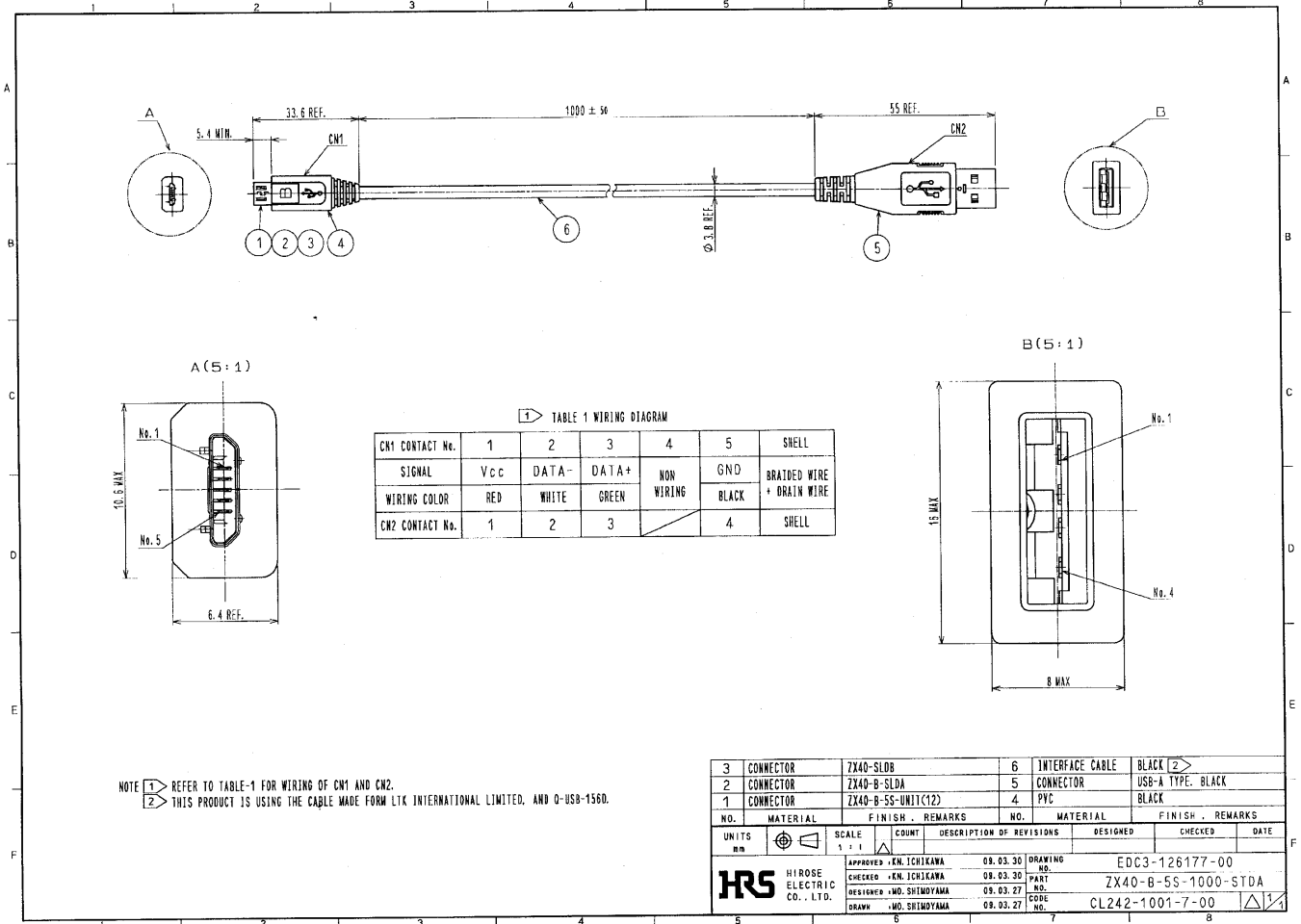
Stocking Distributor

Click to view price, real time Inventory, Delivery & Lifecycle Information:

[Hirose Electric Co Ltd](#)
[ZX40-B-5S-1000-STDA](#)

For any questions, you can email us directly:

sales@integrated-circuit.com



NOTE 1 REFER TO TABLE-1 FOR WIRING OF CN1 AND CN2.
 2 THIS PRODUCT IS USING THE CABLE MADE FORM LITC INTERNATIONAL LIMITED, AND Q-USB-1560.

3	CONNECTOR	ZX40-SLDB	6	INTERFACE CABLE	BLACK 2
2	CONNECTOR	ZX40-B-SLDA	5	CONNECTOR	USB-A TYPE. BLACK
1	CONNECTOR	ZX40-B-5S-UNI1(12)	4	PVC	BLACK

NO.	MATERIAL	FINISH	REMARKS	NO.	MATERIAL	FINISH	REMARKS		
UNITS	mm	SCALE	1 : 1	COUNT		DESCRIPTION OF REVISIONS	DESIGNED	CHECKED	DATE

APPROVED	KEN. ICHIKAWA	08.03.30	DRAWING NO.	EDC3-126177-00
CHECKED	KEN. ICHIKAWA	08.03.30	PART NO.	ZX40-B-5S-1000-STDA
DESIGNED	NO. SHIMIZUYAMA	08.03.27	CODE NO.	CL242-1001-7-00
DRAWN	NO. SHIMIZUYAMA	08.03.27		



APPLICABLE STANDARD		USB2.0 SPECIFICATION AND MICRO-USB CABLE AND CONNECTORS SPECIFICATION.			
OPERATING TEMPERATURE RANGE	-30°C TO +80°C	STORAGE TEMPERATURE RANGE	-30°C TO +80°C		
RATING	VOLTAGE	AC 30V	CURRENT	SIGNAL ONLY	
				1.0 A/pin	
				POWER APPLY	
				1.8 A/pin (PIN No.1, No.5)	
				0.5 A/pin (PIN No.2-No.4)	
SPECIFICATIONS					
ITEM	TEST METHOD	REQUIREMENTS	QT	AT	
CONSTRUCTION					
GENERAL EXAMINATION	VISUALLY AND BY MEASURING INSTRUMENT.	ACCORDING TO DRAWING.	X	X	
MARKING	CONFIRMED VISUALLY.		X	X	
ELECTRICAL CHARACTERISTICS					
VOLTAGE PROOF	100 V AC FOR 1 min.	NO FLASHOVER OR BREAKDOWN.	X	X	
CONTACT RESISTANCE	100 mA DC.	350 mΩ MAX. Δ	X	X	
COUNT	DESCRIPTION OF REVISIONS	DESIGNED	CHECKED	DATE	
Δ 1	DIS-E-002936	MO. SHIMIZU	KN. ICHIKAWA	09.09.15	
REMARK					
A connector independent performance is based on CL242-0002-4.					
HIROSE will not guarantee the performance on these specifications in case this product will be mated with the others which is not HIROSE'S.					
Unless otherwise specified, refer to USB2.0 or EIA 364.					
Note QT:Qualification Test		AT:Assurance Test	X:Applicable Test		
DRAWING NO.		ELC4-126177-00			
HRS					
SPECIFICATION SHEET		PART NO.	ZX40-B-5S-1000-STD A		
HIROSE ELECTRIC CO., LTD.		CODE NO.	CL242-1001-7-00		
				Δ 1/1	