

Excellent Integrated System Limited

Stocking Distributor

Click to view price, real time Inventory, Delivery & Lifecycle Information:

[Panduit](#)

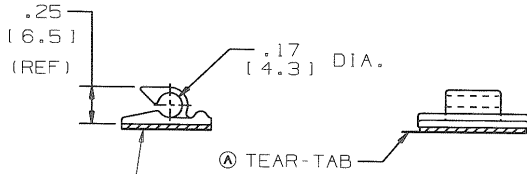
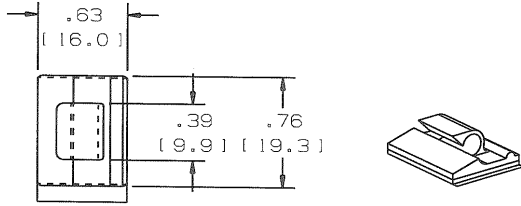
[ACC19-A-C20](#)

For any questions, you can email us directly:

sales@integrated-circuit.com

THIS COPY IS PROVIDED ON A RESTRICTED BASIS AND IS NOT TO BE USED IN ANY WAY DETRIMENTAL TO THE INTERESTS OF PANDUIT CORP.

NO WARRANTY, EXPRESSED OR IMPLIED, IS MADE BY PANDUIT WITH RESPECT TO ADHESIVE BOND PERFORMANCE. AMONG OTHER THINGS, THE CONDITIONS UNDER WHICH THESE MOUNTS MAY BE APPLIED, AND/OR THE SURFACE TO WHICH THEY MAY BE APPLIED, ARE BEYOND PANDUIT'S CONTROL.



ADHESIVE BACKING:
 PRESSURE SENSITIVE FOAM TAPE, .04(1.0) THICK, WITH RUBBER (-A) ACRYLIC (-AT) OR HIGH BOND ACRYLIC (-AV) ADHESIVE AND PROTECTIVE LINER. LINER TO EXTEND BEYOND EDGE TO FORM TEAR-TAB. MOUNT IS DESIGNED TO SUPPORT .20 lbs. (91g) MAX. WEIGHT ON A CLEAN, DRY, SMOOTH SURFACE.

PANDUIT PART NUMBER*	MAXIMUM CABLE DIA. in. (mm)	WEIGHT lbs. (g)/100pcs
ACC19-A	.19 (4.8)	.17 (77)
ACC19-AT	.19 (4.8)	.17 (77)
ACC19-AV	.19 (4.8)	.17 (77)

- TO APPLY ADHESIVE CORD CLIP:
1. REMOVE PROTECTIVE LINER
 2. PLACE IN DESIRED LOCATION
 3. APPLY PRESSURE TO TOP OF CORD CLIP

NOTES:

- * 1) SEE CURRENT PRICE SHEET FOR PART NUMBER SUFFIX DESIGNATION FOR PACKAGE SIZE AND PART COLOR.

(DIMENSIONS IN PARENTHESES ARE METRIC)

CAD FILENAME/LAYERS: G03597BC_DC_GB0239GG/00B



CORP. TINLEY PARK, ILLINOIS

ADHESIVE CORD CLIP
 ACC19-A, ACC19-AT, ACC19-AV

REV	DATE	BY	CHK	DESCRIPTION	ECN	R	CUST	SUP
00B	11-6-09	TMSA	SAY	ADDED PART NUMBER ACC19-AV REVISD TO TEAMCENTER NAMING CONVENTION	GB0239GG	00B		KLN
2	6-5-03	MSAD		MODIFIED BASE LENGTH AND WIDTH DIMENSIONS	GB0239GG	2		
I	7-15-99	CGSM		REPLACED ISO VIEW	GB0239GG	I		
R	2-23-99	CGSM		RE-DRAWN FROM DWG 55-7173	GB0239GG	R		

UNLESS OTHERWISE SPECIFIED, DIMENSIONAL TOLERANCES ARE:
 (.X) ± N/A (.XXX) ± N/A
 (.XX) ± .02 (.5) ANGLES ± 5°

UNLESS OTHERWISE SPECIFIED, ALL DIMENSIONS ARE GIVEN IN INCHES, THIRD ANGLE PROJECTION.

DRAWN BY CGSM

MAT'L:

SCALE

FULL

DATE

2-23-99

NYLON 6/6

DRAWING NO.

GB0239GG

DWG

SIZE

CHK'D

KLN

A