

## **Excellent Integrated System Limited**

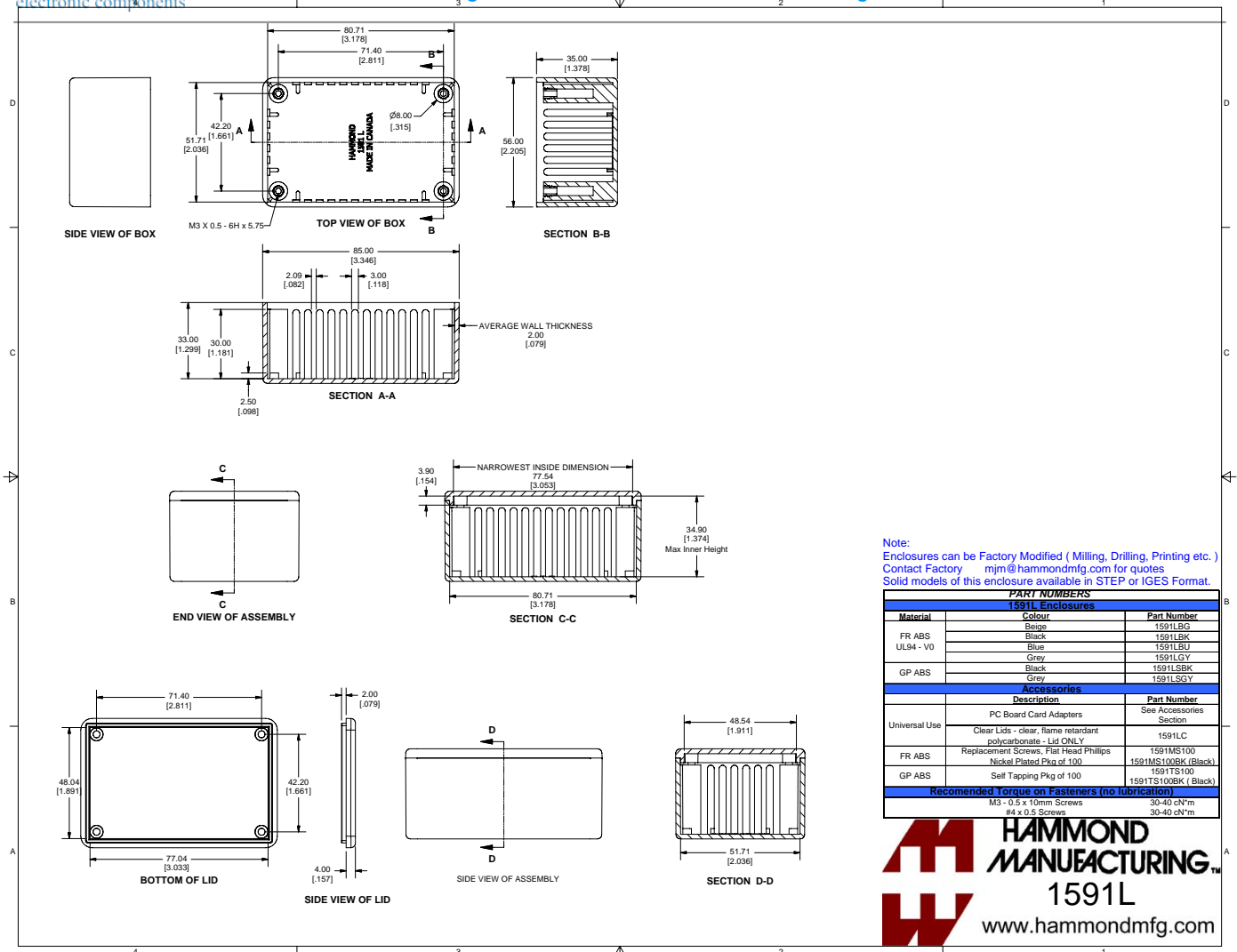
Stocking Distributor

Click to view price, real time Inventory, Delivery & Lifecycle Information:

[Hammond Manufacturing](#)  
[1591LSBK](#)

For any questions, you can email us directly:

[sales@integrated-circuit.com](mailto:sales@integrated-circuit.com)



Note:  
Enclosures can be Factory Modified ( Milling, Drilling, Printing etc. )  
Contact Factory [mjm@hammondmfg.com](mailto:mjm@hammondmfg.com) for quotes  
Solid models of this enclosure available in STEP or IGES Format.

PART NUMBERS		
1591L Enclosures		
Material	Colour	Part Number
FR ABS	Beige	1591L BG
	Black	1591L BK
UL94 - V0	Blue	1591L BU
	Grey	1591L GY
GP ABS	Black	1591L SBK
	Grey	1591L SGY
Accessories		
	Description	Part Number
Universal Use	PC Board Card Adapters	See Accessories Section
	Clear Lids - clear, flame retardant polycarbonate - Lid ONLY	1591LC
FR ABS	Replacement Screws, Flat Head Phillips	1591MS100
GP ABS	Nickel Plated Pkg of 100	1591MS100BK ( Black)
	Self Tapping Pkg of 100	1591TS100
		1591TS100BK ( Black)
Recommended Torque on Fasteners (no lubrication)		
	M3 - 0.5 x 10mm Screws	30-40 cN·m
	#4 x 0.5 Screws	30-40 cN·m

