

Excellent Integrated System Limited

Stocking Distributor

Click to view price, real time Inventory, Delivery & Lifecycle Information:

[Molex Connector Corporation](#)
[0731711900](#)

For any questions, you can email us directly:

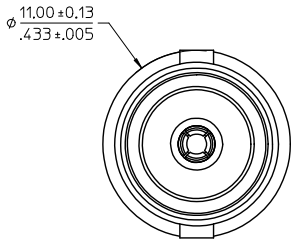
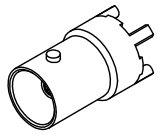
sales@integrated-circuit.com

MATERIAL AND FINISHES

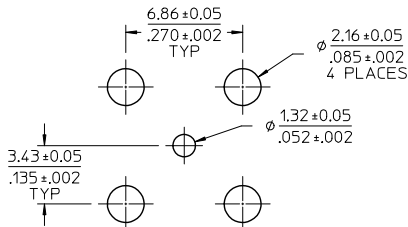
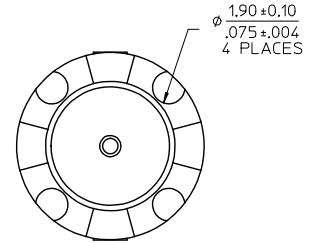
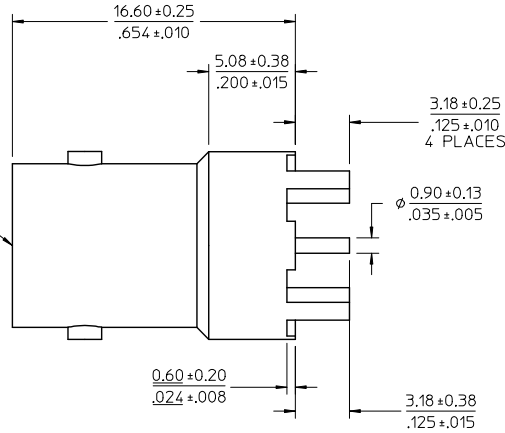
BODY ZINC ALLOY
PLATED NICKEL

CONTACT PHOSPHOR BRONZE
PLATED GOLD

INSULATOR PE-606



BNC JACK
75 OHM
INTERFACE



RECOMMENDED PCB
HOLE PATTERN

73171-1902	73171-1900, ONE PER BAG
73171-1900	BULK
PART NO.	PACKAGING

CHG: ADD STAND OFF DIM: 0.040, 0.20 EC NO: URF2014-0462 DRAWING NO: 2014/02/12 CHKD: APPROV: JANG 2014/02/27	QUALITY SYMBOLS 	GENERAL TOLERANCES (UNLESS SPECIFIED) mm INCH 4 PLACES ± --- ± --- 3 PLACES ± --- ± --- 2 PLACES ± --- ± --- 1 PLACE ± --- ± --- 0 PLACE ± --- ± ---	DIMENSION STYLE MM/IN	SCALE DESIGN UNITS METRIC	THIRD ANGLE PROJECTION	DRAWN BY TEF 2003/01/07 CHECKED BY SSS 2003/01/07 APPROVED BY GMH 2003/01/07	MATERIAL NO. SEE TABLE	DOCUMENT NO. SD-73171-190	SHEET NO. 1 OF 1
DRAFT WHERE APPLICABLE MUST REMAIN WITHIN DIMENSIONS THIS DRAWING CONTAINS INFORMATION THAT IS PROPRIETARY TO MOLEX INCORPORATED AND SHOULD NOT BE USED WITHOUT WRITTEN PERMISSION									