

Excellent Integrated System Limited

Stocking Distributor

Click to view price, real time Inventory, Delivery & Lifecycle Information:

[TDK Corporation](#)
[MEM2012P10R0](#)

For any questions, you can email us directly:

sales@integrated-circuit.com

3-terminal Filters(SMD) For Wide-band

Conformity to RoHS Directive

MEM Series MEM2012P Type

FEATURES

- Multilayer chip EMC filter that is small and low-profile due to the use of a π -type circuit.
- Entirely monolithic structure results in high reliability.
- Due to closed magnetic circuit architecture, high-density installation becomes possible, and crosstalk generation is prevented.
- Steep attenuation characteristic plot. Highly effective noise suppression.
- Covers a wide range of frequencies.
- π -type circuit with 1 coil / 2 capacitors construction.

APPLICATIONS

Computers, computer peripherals, VCRs, TVs, car audio equipment, printers, game machines, etc.

TEMPERATURE RANGES

Operating/Storage -40 to $+85^{\circ}\text{C}$

PRODUCT IDENTIFICATION

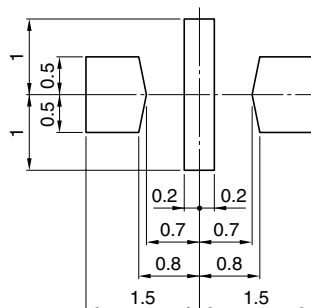
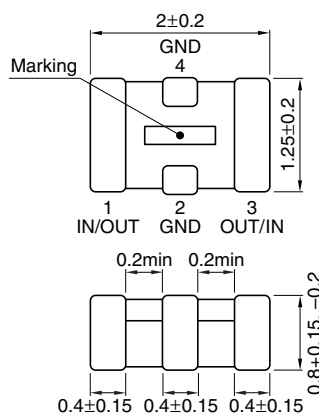
| | | | | |
|-----|------|-----|------|-----|
| MEM | 2012 | P | 10R0 | T |
| (1) | (2) | (3) | (4) | (5) |

- (1) Series name
 (2) Dimensions L×W
 (3) π -type circuit
 (4) Cutoff frequency 10R0:10MHz
 (5) Packaging style T:Taping

PACKAGING STYLE AND QUANTITIES

| Packaging style | Quantity |
|-----------------|--------------------|
| Taping | 4000 pieces / reel |

SHAPES AND DIMENSIONS/RECOMMENDED PC BOARD PATTERN



Dimensions in mm

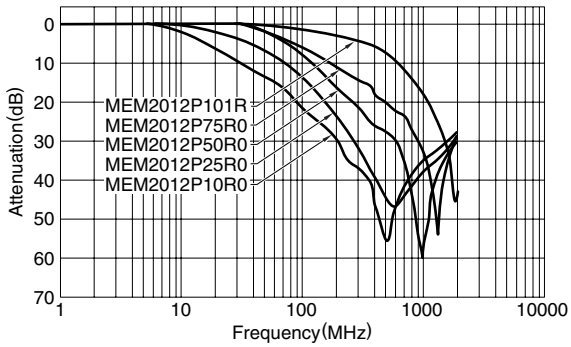
ELECTRICAL CHARACTERISTICS

| Part No. | Cutoff frequency (MHz) | Attenuation (dB)min. | Rated voltage Edc(V)max. | Rated current Idc(mA)max. |
|--------------|------------------------|----------------------|--------------------------|---------------------------|
| MEM2012P10R0 | 10 | 20[0.2 to 2GHz] | 12 | 200 |
| MEM2012P25R0 | 25 | 20[0.3 to 2GHz] | 12 | 200 |
| MEM2012P50R0 | 50 | 20[0.4 to 2GHz] | 12 | 200 |
| MEM2012P75R0 | 75 | 20[0.7 to 2GHz] | 12 | 200 |
| MEM2012P101R | 100 | 20[1.5 to 2GHz] | 12 | 200 |

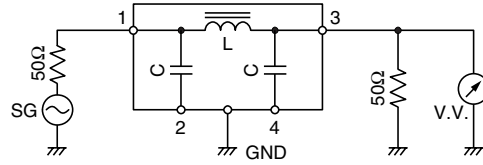
- Conformity to RoHS Directive: This means that, in conformity with EU Directive 2002/95/EC, lead, cadmium, mercury, hexavalent chromium, and specific bromine-based flame retardants, PBB and PBDE, have not been used, except for exempted applications.
- Please contact our Sales office when your application are considered the following:
 The device's failure or malfunction may directly endanger human life (e.g. application for automobile/aircraft/medical/nuclear power devices, etc.)

TYPICAL ELECTRICAL CHARACTERISTICS

ATTENUATION vs. FREQUENCY CHARACTERISTICS



MEASURING CIRCUIT



RECOMMENDED SOLDERING CONDITION

REFLOW SOLDERING

