

## Excellent Integrated System Limited

Stocking Distributor

Click to view price, real time Inventory, Delivery & Lifecycle Information:

[ON Semiconductor](#)  
[TRA2532](#)

For any questions, you can email us directly:

[sales@integrated-circuit.com](mailto:sales@integrated-circuit.com)

# TRA2532

## Overvoltage Transient Suppressor

24 V–32 V

Designed for applications requiring a diode with reverse avalanche characteristics for use as reverse power transient suppressor. Developed to suppress transients in automotive system, this device operates in the forward mode as standard rectifier or reverse mode as power zener diode and will protect expensive modules such as ignition, injection, antiblocking system . . . from overvoltage conditions.

- High Power Capability
- Economical

### Mechanical Characteristics

- Finish: All External Surfaces are Corrosion Resistant, and Contact Areas are Readily Solderable
- Polarity: Indicated by Cathode Band
- Weight: 1.8 Grams (Approximately)
- Maximum Temperature for Soldering Purposes: 260°C
- Marking: 2532

### MAXIMUM RATINGS

Rating	Symbol	Value	Unit
DC Blocking Voltage	$V_R$	23	Volts
Average Forward Current (Single Phase, Resistive Load, $T_C = 150^\circ\text{C}$ )	$I_O$	32	Amps
Peak Repetitive Reverse Surge Current (Time Constant = 10 ms, $T_C = 25^\circ\text{C}$ )	$I_{RSM}$	80	Amps
Non–Repetitive Peak Surge Current (Halfwave, Single Phase, 60 Hz)	$I_{FSM}$	500	Amps
Operating Junction Temperature Range	$T_J$	–65 to +175	°C
Storage Temperature Range	$T_{stg}$	–65 to +150	°C



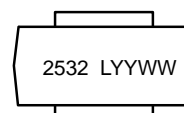
**ON Semiconductor™**

<http://onsemi.com>



**MICRODE BUTTON  
CASE 193**

### MARKING DIAGRAM



2532 = Device Code  
L = Location Code  
YY = Year  
WW = Work Week

### ORDERING INFORMATION

Device	Package	Shipping
TRA2532	Microdiode Button	5000 Units/Box

## TRA2532

### THERMAL CHARACTERISTICS

Characteristic	Symbol	Value	Unit
Thermal Resistance, Junction to Case	$R_{\theta JC}$	0.8	$^{\circ}C/W$

### ELECTRICAL CHARACTERISTICS

Characteristic	Symbol	Min	Max	Unit
Instantaneous Forward Voltage (Note 1.) ( $I_F = 100$ Amps, $T_C = 25^{\circ}C$ )	$V_F$	–	1.18	Volts
Reverse Current <sup>(1)</sup> ( $V_R = 23$ Vdc, $T_C = 25^{\circ}C$ )	$I_R$	–	10	$\mu A$
Breakdown Voltage <sup>(1)</sup> ( $I_Z = 100$ mA, $T_C = 25^{\circ}C$ )	$V_{(BR)}$	24	32	Volts
Breakdown Voltage ( $I_Z = 80$ Amps, $T_C = 25^{\circ}C$ , $P_W = 80$ $\mu s$ )	$V_{(BR)}$	–	40	Volts
Breakdown Voltage Temperature Coefficient	$V_{(BR)TC}$	0.096*	0.096*	$\%/^{\circ}C$
Forward Voltage Temperature Coefficient @ $I_F = 10$ mA	$V_{FTC}$	– 2*	– 2*	$mV/^{\circ}C$

1. Pulse Test: Pulse Width  $\leq 300$   $\mu s$ , Duty Cycle  $\leq 2\%$ .

\*Typical

## TRA2532

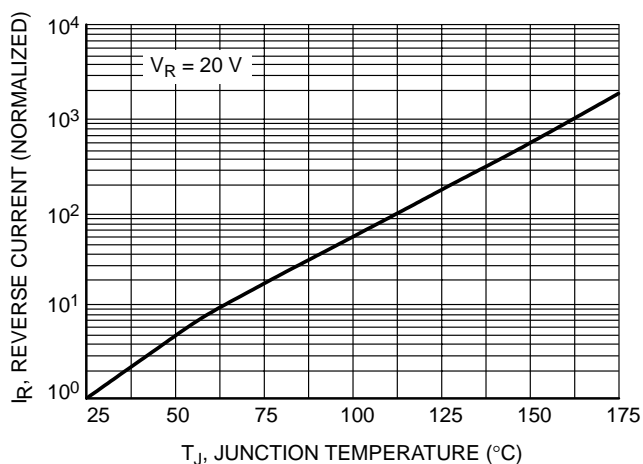


Figure 1. Normalized Reverse Current

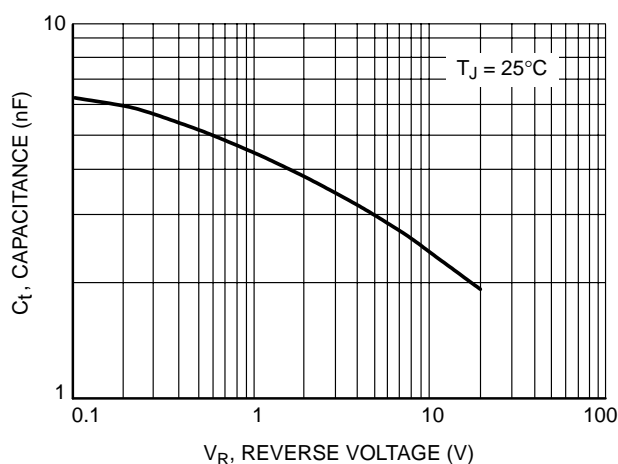


Figure 2. Typical Reverse Capacitance

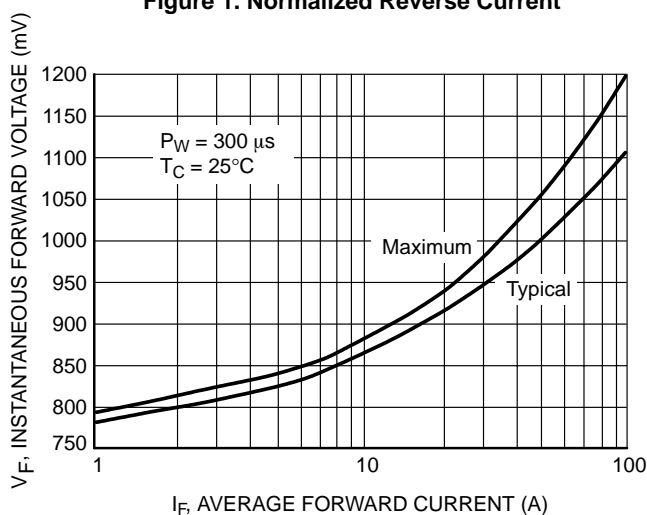


Figure 3. Forward Voltage

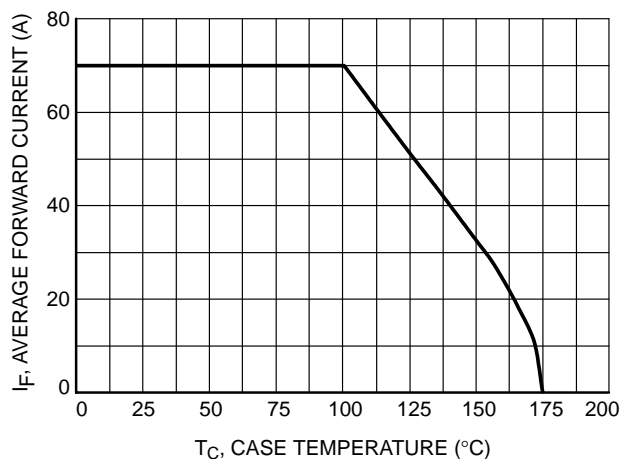


Figure 4. Maximum Current Rating

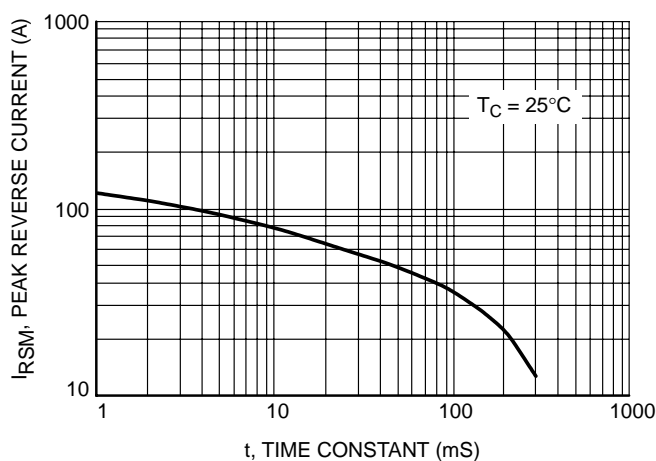


Figure 5. Maximum Peak Reverse Current

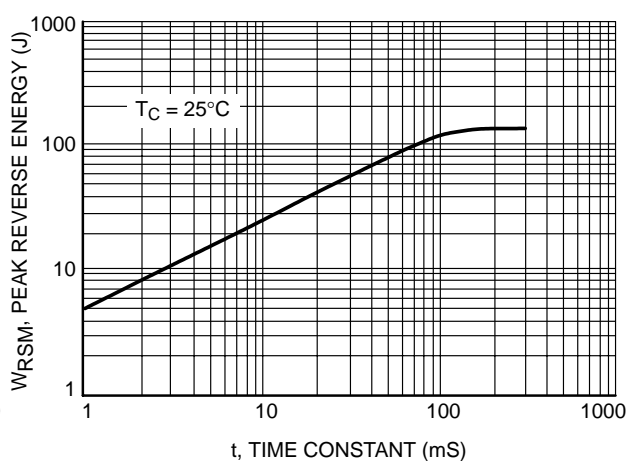


Figure 6. Maximum Reverse Energy

## TRA2532

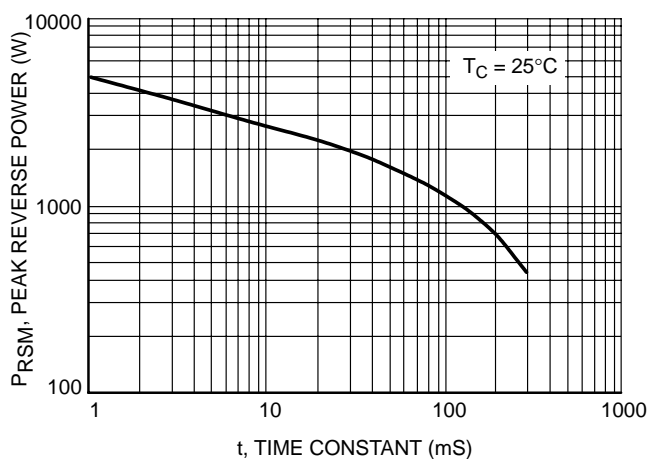


Figure 7. Maximum Peak Reverse Power

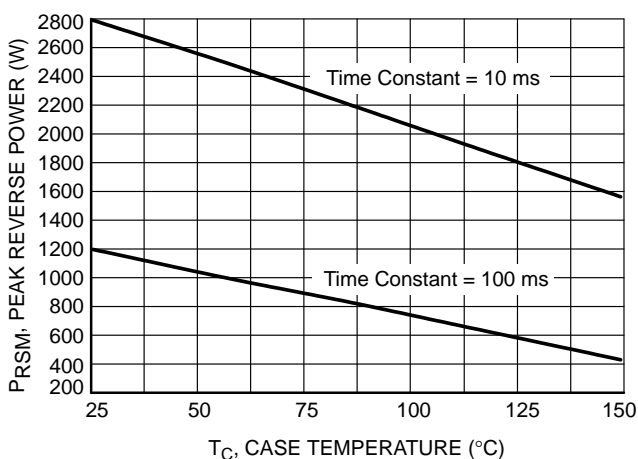


Figure 8. Reverse Power Derating

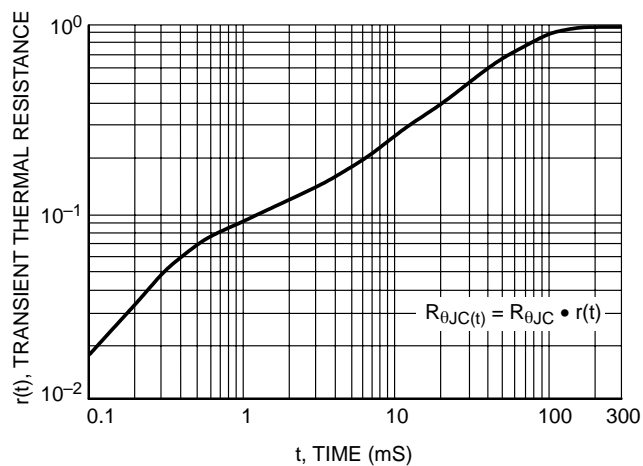


Figure 9. Thermal Response

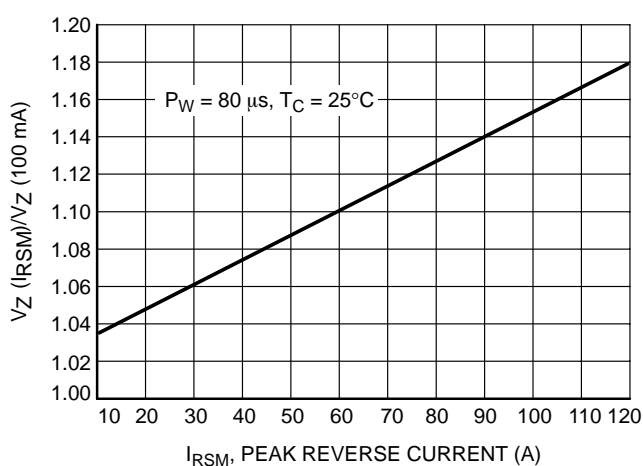
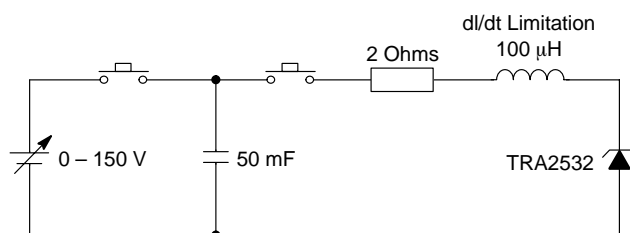
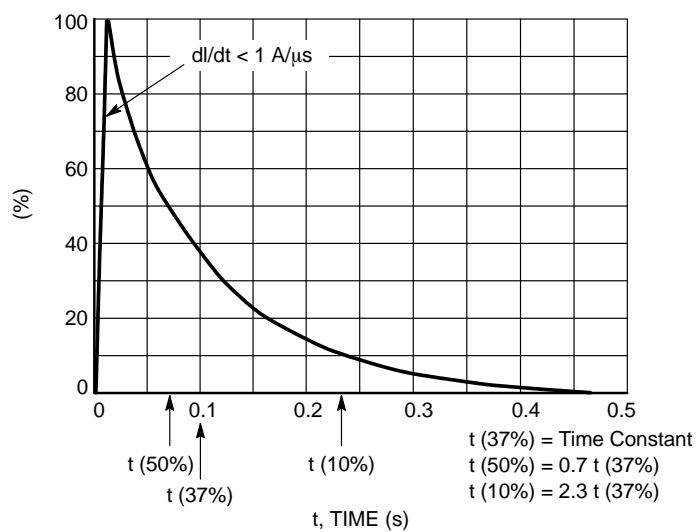


Figure 10. Typical Clamping Factor

## TRA2532



**Figure 11. Load Dump Test Circuit**



**Figure 12. Load Dump Pulse Current**

## TRA2532

### Assembly and Soldering Information

There are *two basic areas* of consideration for successful implementation of button rectifiers:

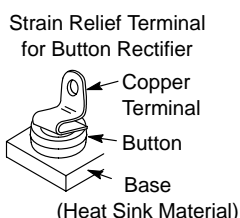
1. Mounting and Handling
2. Soldering

Each should be carefully examined before attempting a finished assembly or mounting operation.

### Mounting and Handling

The button rectifier lends itself to a multitude of assembly arrangements, but one key consideration must *always* be included: One Side of the Connections to the Button Must be Flexible!

This stress relief to the button should also be chosen for maximum contact area to afford the best heat transfer – but not at the expense of flexibility. For an annealed copper terminal a thickness of 0.015" is suggested.



The base heat sink may be of various materials whose shape and size are a function of the individual application and the heat transfer requirements.

### Common Materials

### Advantages and Disadvantages

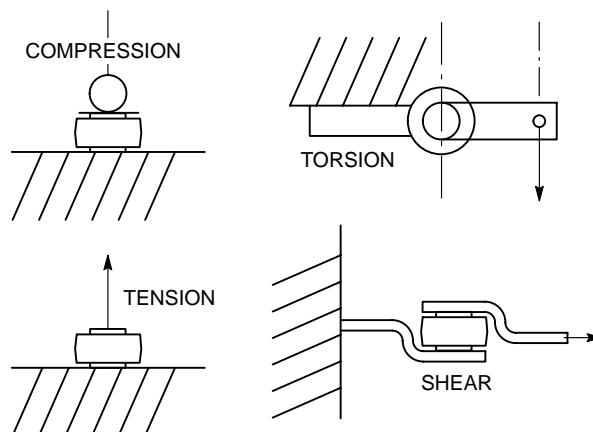
Steel	Low Cost: relatively low heat conductivity
Copper	High Cost: high heat conductivity
Aluminum	Medium Cost: medium heat conductivity. Relatively expensive to plate and not all platers can process aluminum.

Handling of the button during assembly must be relatively gentle to minimize sharp impact shocks and avoid nicking of the plastic. Improperly designed automatic handling equipment is the worst source of unnecessary shocks. Techniques for vacuum handling and spring loading should be investigated.

The mechanical stress limits for the button diode are as follows:

Compression	32 lbs.	142.3 Newton
Tension	32 lbs.	142.3 Newton
Torsion	6–inch lbs.	0.68 Newtons–meters
Shear	55 lbs.	244.7 Newton

### MECHANICAL STRESS



Exceeding these recommended maximums can result in electrical degradation of the device.

### Soldering

The button rectifier is basically a semiconductor chip bonded between two nickel-plated copper heat sinks with an encapsulating material of epoxy compound. The exposed metal areas are also tin plated to enhance solderability.

In the soldering process it is important that the temperature not exceed 260°C if device damage is to be avoided. Various solder alloys can be used for this operation but two types are recommended for best results:

1. 95% Sn, 5% Sb; melting point 237°C
2. 96.5% tin, 3.5% silver; melting point 221°C
3. 63% tin, 37% lead; melting point 183°C

Solder is available as preforms or paste. The paste contains both the metal and flux and can be dispensed rapidly. The solder preform requires the application of a flux to assure good wetting of the solder. The type of flux used depends upon the degree of cleaning to be accomplished and is a function of the metal involved. These fluxes range from a mild rosin to a strong acid; e.g., Nickel plating oxides are best removed by an acid base flux while an activated rosin flux may be sufficient for tin plated parts.

Since the button is relatively lightweight, there is a tendency for it to float when the solder becomes liquid. To prevent bad joints and misalignment, it is suggested that a weighting or spring loaded fixture be employed. It is also important that severe thermal shock (either heating or cooling) be avoided as it may lead to damage of the die or encapsulant of the part.

---

## TRA2532

Button holding fixtures for use during soldering may be of various materials. Stainless steel has a longer use life while black anodized aluminum is less expensive and will limit heat reflection and enhance absorption. The assembly volume will influence the choice of materials. Fixture dimension tolerances for locating the button must allow for expansion during soldering as well as allowing for button clearance.

### Heating Techniques

The following four heating methods have their advantages and disadvantages depending on volume of buttons to be soldered.

1. **Belt furnaces** readily handle large or small volumes and are adaptable to establishment of "on-line" assembly since a variable belt speed sets the run rate. Individual furnace zone controls make excellent temperature control possible.
2. **Flame Soldering** involves the directing of natural gas flame jets at the base of a heatsink as the heatsink is indexed to various loading-heating-cooling-unloading positions. This is the most economical labor method of soldering large volumes. Flame soldering offers good temperature

control but requires sophisticated temperature monitoring systems such as infrared.

3. **Ovens** are good for batch soldering and are production limited. There are handling problems because of slow cooling. Response time is load dependent, being a function of the watt rating of the oven and the mass of parts. Large ovens may not give an acceptable temperature gradient. Capital cost is low compared to belt furnaces and flame soldering.
4. **Hot Plates** are good for soldering small quantities of prototype devices. Temperature control is fair with overshoot common because of the exposed heating surface. Solder flow and positioning can be corrected during soldering since the assembly is exposed. Investment cost is very low.

Regardless of the heating method used, a soldering profile giving the time-temperature relationship of the particular method must be determined to assure proper soldering. Profiling must be performed on a scheduled basis to minimize poor soldering. The time-temperature relationship will change depending on the heating method used.



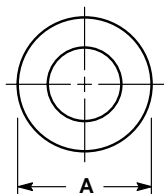
## TRA2532

### PACKAGE DIMENSIONS

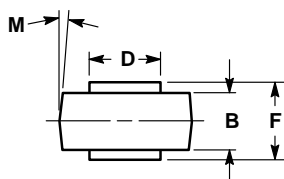
#### MICRODIP BUTTON


CASE 193-04

ISSUE J



DIM	MILLIMETERS		INCHES	
	MIN	MAX	MIN	MAX
A	8.43	8.69	0.332	0.342
B	4.19	4.45	0.165	0.175
D	5.54	5.64	0.218	0.222
F	5.94	6.25	0.234	0.246
M	5°NOM		5°NOM	



ON Semiconductor and  are trademarks of Semiconductor Components Industries, LLC (SCILLC). SCILLC reserves the right to make changes without further notice to any products herein. SCILLC makes no warranty, representation or guarantee regarding the suitability of its products for any particular purpose, nor does SCILLC assume any liability arising out of the application or use of any product or circuit, and specifically disclaims any and all liability, including without limitation special, consequential or incidental damages. "Typical" parameters which may be provided in SCILLC data sheets and/or specifications can and do vary in different applications and actual performance may vary over time. All operating parameters, including "Typicals" must be validated for each customer application by customer's technical experts. SCILLC does not convey any license under its patent rights nor the rights of others. SCILLC products are not designed, intended, or authorized for use as components in systems intended for surgical implant into the body, or other applications intended to support or sustain life, or for any other application in which the failure of the SCILLC product could create a situation where personal injury or death may occur. Should Buyer purchase or use SCILLC products for any such unintended or unauthorized application, Buyer shall indemnify and hold SCILLC and its officers, employees, subsidiaries, affiliates, and distributors harmless against all claims, costs, damages, and expenses, and reasonable attorney fees arising out of, directly or indirectly, any claim of personal injury or death associated with such unintended or unauthorized use, even if such claim alleges that SCILLC was negligent regarding the design or manufacture of the part. SCILLC is an Equal Opportunity/Affirmative Action Employer.

### PUBLICATION ORDERING INFORMATION

#### NORTH AMERICA Literature Fulfillment:

Literature Distribution Center for ON Semiconductor  
P.O. Box 5163, Denver, Colorado 80217 USA  
**Phone:** 303-675-2175 or 800-344-3860 Toll Free USA/Canada  
**Fax:** 303-675-2176 or 800-344-3867 Toll Free USA/Canada  
**Email:** ONlit@hibbertco.com  
Fax Response Line: 303-675-2167 or 800-344-3810 Toll Free USA/Canada

**N. American Technical Support:** 800-282-9855 Toll Free USA/Canada

**EUROPE:** LDC for ON Semiconductor – European Support

**German Phone:** (+1) 303-308-7140 (Mon–Fri 2:30pm to 7:00pm CET)  
**Email:** ONlit-german@hibbertco.com  
**French Phone:** (+1) 303-308-7141 (Mon–Fri 2:00pm to 7:00pm CET)  
**Email:** ONlit-french@hibbertco.com  
**English Phone:** (+1) 303-308-7142 (Mon–Fri 12:00pm to 5:00pm GMT)  
**Email:** ONlit@hibbertco.com

**EUROPEAN TOLL-FREE ACCESS\*: 00-800-4422-3781**

\*Available from Germany, France, Italy, UK, Ireland

#### CENTRAL/SOUTH AMERICA:

**Spanish Phone:** 303-308-7143 (Mon–Fri 8:00am to 5:00pm MST)  
**Email:** ONlit-spanish@hibbertco.com  
**Toll-Free from Mexico:** Dial 01-800-288-2872 for Access –  
then Dial 866-297-9322

**ASIA/PACIFIC:** LDC for ON Semiconductor – Asia Support

**Phone:** 303-675-2121 (Tue–Fri 9:00am to 1:00pm, Hong Kong Time)  
**Toll Free from Hong Kong & Singapore:**  
**001-800-4422-3781**  
**Email:** ONlit-asia@hibbertco.com

**JAPAN:** ON Semiconductor, Japan Customer Focus Center  
4-32-1 Nishi-Gotanda, Shinagawa-ku, Tokyo, Japan 141-0031  
**Phone:** 81-3-5740-2700  
**Email:** r14525@onsemi.com

**ON Semiconductor Website:** <http://onsemi.com>

For additional information, please contact your local Sales Representative.