

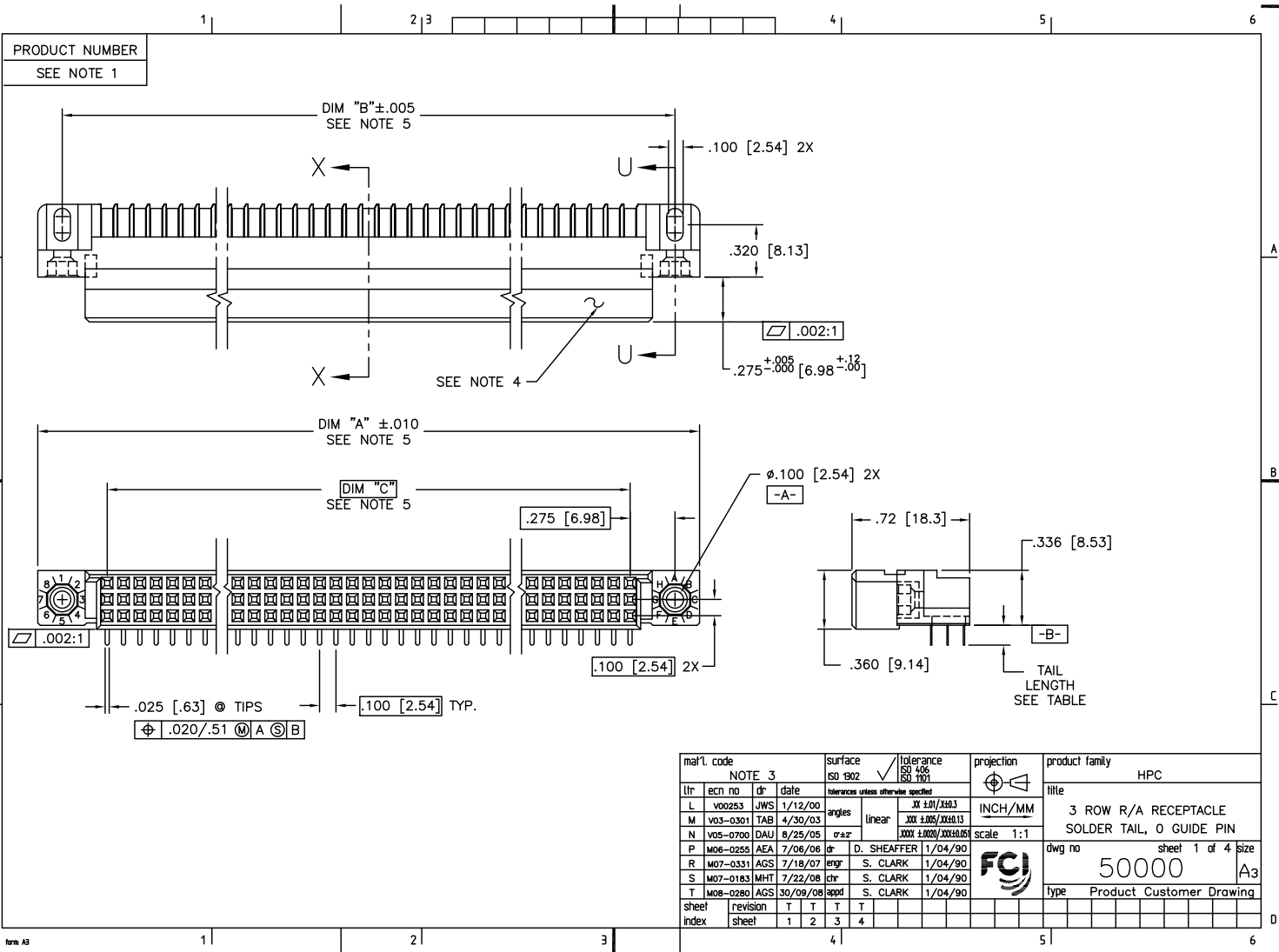
## Excellent Integrated System Limited

Stocking Distributor

Click to view price, real time Inventory, Delivery & Lifecycle Information:

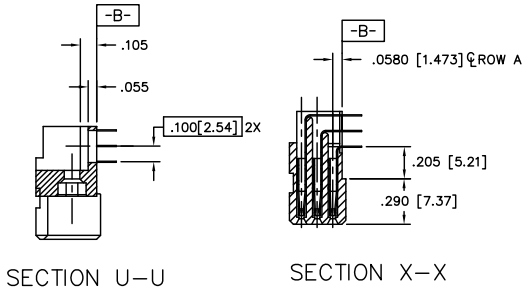
[FCI](#)  
[50000-1018E](#)

For any questions, you can email us directly:  
[sales@integrated-circuit.com](mailto:sales@integrated-circuit.com)

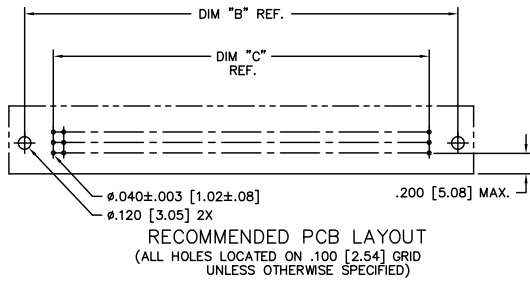


NOTE 3				surface	tolerance	projection	product family
ltr	ecn no	dr	date	ISO 1302	ISO 428	ISO 1101	HPC
L	v00253	JWS	1/12/00		$XX \pm .01 / XXX.3$	INCH/MM	title
M	v03-0301	TAB	4/30/03	angles	$XXX \pm .005 / XXX.13$		3 ROW R/A RECEPTACLE
N	v05-0700	DAU	8/25/05	$\sigma \pm z$	$XXX \pm .0020 / XXX.005$	scale 1:1	SOLDER TAIL, 0 GUIDE PIN
P	m06-0255	AEA	7/06/06	dr	D. SHEAFFER	1/04/90	dwg no
R	m07-0331	AGS	7/18/07	eng	S. CLARK	1/04/90	50000
S	m07-0183	MHT	7/22/08	chr	S. CLARK	1/04/90	sheet 1 of 4 size
T	m08-0280	AGS	30/09/08	appd	S. CLARK	1/04/90	A3
sheet	revision	T	T	T			type
index	sheet	1	2	3	4		Product Customer Drawing

PRODUCT NUMBER  
SEE TABLE



- NOTES:
- PRODUCT NUMBERING CODE:  
 50000 - X YYY Z LF  
 LEAD FREE (OPTIONAL)  
 TAIL LENGTH (SEE TABLE)  
 NO. OF POSITIONS (SEE NOTE 2)  
 PLATING (SEE TABLE)  
 BASE NUMBER
  - PRODUCT NUMBERING CODE FOR SELECT LOAD PART NUMBERS:  
 50000 - XXXXX LF  
 LEAD FREE (OPTIONAL)  
 SEQUENCE NUMBER  
 ALWAYS "XX"  
 BASE NUMBER
  - THIS PRODUCT IS CONFIGURED IN SIZES OF 6 THRU 80 COLUMNS IN INCREMENTS OF ONE.  
 i.e.: 6,7,8,9,.....79,80.
  - HOUSING MATERIAL: GLASS AND MINERAL FILLED THERMOPLASTIC.  
 FLAME RETARDANT PER UL94V-0. COLOR:BLACK  
 CONTACT MATERIAL: BeCu
  - COMPANY NAME, PART NUMBER AND LOT CODE TO APPEAR ON THIS SURFACE PER BUS-12-108.
  - LENGTH FORMULAS:  
 DIM A = .100/2.54 X NO. OF COLUMNS + .75/19.1  
 DIM B = .100/2.54 X NO. OF COLUMNS + .450/11.43  
 DIM C = .100/2.54 X NO. OF COLUMNS - .100/2.54
  - PRODUCT WITH "LF" SUFFIX MEETS EUROPEAN UNION DIRECTIVES AND OTHER COUNTRY REGULATIONS AS DESCRIBED IN GS-22-008.
  - THIS HOUSING WILL WITHSTAND EXPOSURE TO 260° C PEAK TEMPERATURE FOR 10-30 SECONDS IN A CONVECTION, INFRA-RED OR VAPOR PHASE REFLOW OVEN.
  - PLATING OPTION:  
 MAY BE EITHER GOLD OR GXT PLATED AT MANUFACTURER'S OPTION.



mat'l. code		surface	tolerance	projection	product family
NOTE 3		ISO 1902	ISO 406 ISO 1101		HPC
l/r	ecn no	dr	date	title	
T				3 ROW R/A RECEPTACLE SOLDER TAIL, 0 GUIDE PIN	
		angles	linear	INCH/MM	scale 1:1
		dr	eng	dwg no	sheet 2 of 4 size
		chr	appd	50000	A3
				type Product Customer Drawing	
sheet index	revision sheet				

PRODUCT NUMBER NOTE 1	NUMBER OF POSITIONS NOTE 2	TAIL LENGTH	SOLDER TAIL PLATING	CONTACT PLATING (NOTE 8)
50000-1YYYY	YYY	.125±.010/3.18±0.25	TIN-LEAD	30u"/0.76um Au
50000-1YYYYLF	YYY	.125±.010/3.18±0.25	TIN	30u"/0.76um Au
50000-1YYYYF	YYY	.145±.010/3.68±0.25	TIN-LEAD	30u"/0.76um Au
50000-1YYYYH	YYY	.180±.010/4.57±0.25	TIN-LEAD	30u"/0.76um Au
50000-1YYYYZ	YYY	.220±.010/5.59±0.25	TIN-LEAD	30u"/0.76um Au
50000-3YYYYE	YYY	.125±.010/3.18±0.25	TIN-LEAD	50u"/1.27um Au
50000-3YYYYF	YYY	.145±.010/3.68±0.25	TIN-LEAD	50u"/1.27um Au
50000-3YYYYH	YYY	.180±.010/4.57±0.25	TIN-LEAD	50u"/1.27um Au
50000-3YYYYZ	YYY	.220±.010/5.59±0.25	TIN-LEAD	50u"/1.27um Au
50000-5YYYYE	YYY	.125±.010/3.18±0.25	TIN-LEAD	30u"/0.76um GXT
50000-5YYYYLF	YYY	.125±.010/3.18±0.25	TIN	30u"/0.76um GXT
50000-5YYYYF	YYY	.145±.010/3.68±0.25	TIN-LEAD	30u"/0.76um GXT
50000-5YYYYLF	YYY	.145±.010/3.68±0.25	TIN	30u"/0.76um GXT
50000-5YYYYH	YYY	.180±.010/4.57±0.25	TIN-LEAD	30u"/0.76um GXT
50000-5YYYYHLF	YYY	.180±.010/4.57±0.25	TIN	30u"/0.76um GXT
50000-5YYYYZ	YYY	.220±.010/5.59±0.25	TIN-LEAD	30u"/0.76um GXT
50000-5YYYYZLF	YYY	.220±.010/5.59±0.25	TIN	30u"/0.76um GXT

mat'l. code				surface	tolerance	projection	product family
NOTE 3				ISO 1902	ISO 406 ISO 1101		HPC
ltr	ecm no	dr	date	tolerances unless otherwise specified		INCH/MM	title
T				angles	XX ±.01/XX0.3		
				linear	.XXX ±.005/XXX.13	scale 1:1	dwg no 50000
				σ±Z	.XXX ±.0020/XXX0.05		
				dr	D. SHEAFFER 1/04/90		type Product Customer Drawing
				engr	S. CLARK 1/04/90		
				chr	S. CLARK 1/04/90		
				appd	S. CLARK 1/04/90		
sheet index	revision sheet						

PRODUCT NUMBER  
SEE TABLE

50000-XX001 OR 50000-XX001LF ONLY

	55			50				45				40				36
C	C	C	C	C	C	C	C	C	C	C	C	C	C	C	C	C
B	B	B	B	B	B	B	B	B	B	B	B	B	B	B	B	B
A	A	A	A	A	A	A	A	A	A	A	A	A	A	A	A	A

35				30					25					20					15					10					5					1	
C	C	C	C	C	C	C	C	C	C	C	C	C	C	C	C	C	C	C	C	C	C	C	C	C	C	C	C	C	C	C	C	C	C	C	C
A	A	A	A	A	A	A	A	A	A	A	A	A	A	A	A	A	A	A	A	A	A	A	A	A	A	A	A	A	A	A	A	A	A	A	A

NOTES FOR 50000-XX001 OR 50000-XX001LF ONLY:

- ALL POSITIONS ARE LOADED AS SHOWN.
- COLUMN 1, ROW A IS DESIGNATED AS SIGNAL TERM. 1, AS VIEWED FROM THE MATING FACE.
- SIGNAL DATA FOR 50000-XX001 OR 50000-XX001LF  
 SIZE 3 X 55  
 TOTAL NUMBER OF POSITIONS: 165  
 TOTAL NUMBER OF POSITIONS LOADED: 107

ITEM KEY	QTY.	TAIL LENGTH
A	45	.180±.010/4.57±.25
B	17	.180±.010/4.57±.25
C	45	.180±.010/4.57±.25

mat'l. code				surface	tolerance	projection	product family
NOTE 3				ISO 1902	ISO 406		HPC
				ISO 1101	ISO 1101		title
l/r	ecn no	dr	date	tolerances unless otherwise specified		INCH/MM	3 ROW R/A RECEPTACLE
T				angles	XX ±.01/XX±.3	scale 1:1	SOLDER TAIL, 0 GUIDE PIN
				linear	XXX ±.005/XXX±.13		dwg no
				σ±Z	XXX ±.002/XXX±.05	sheet 4 of 4	size A3
				dr	D. SHEAFFER 1/04/90	type Product Customer Drawing	
				engr	S. CLARK 1/04/90		
				chr	S. CLARK 1/04/90		
				appd	S. CLARK 1/04/90		
sheet index	revision sheet						