

Excellent Integrated System Limited

Stocking Distributor

Click to view price, real time Inventory, Delivery & Lifecycle Information:

[FCI](#)
[51534-XX001LF](#)

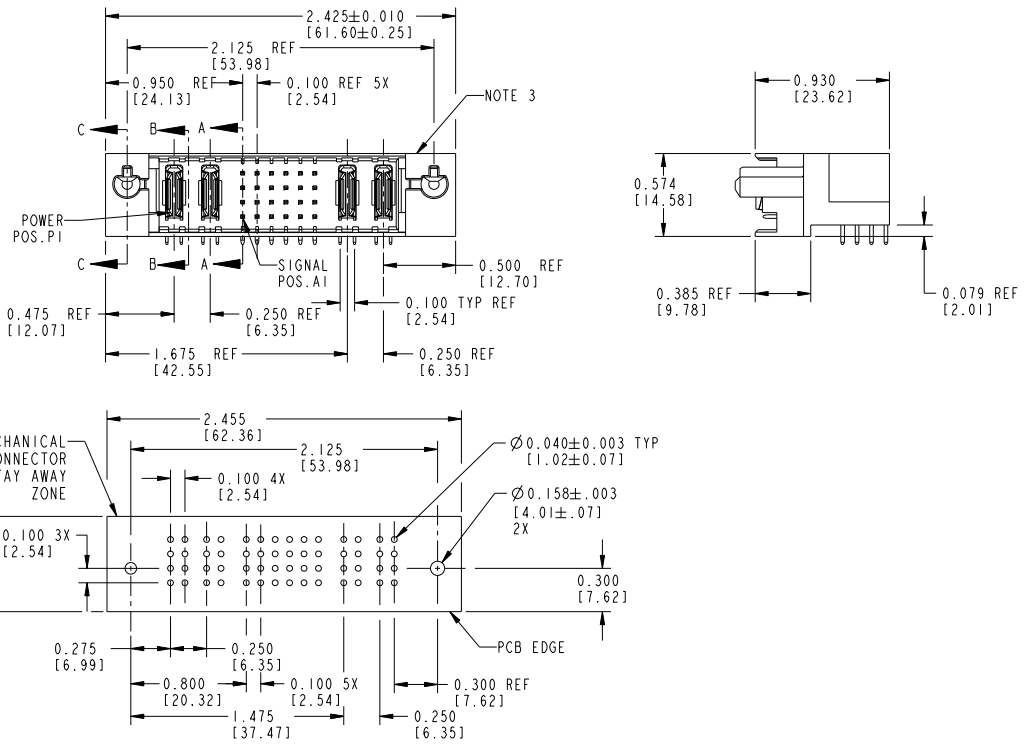
For any questions, you can email us directly:
sales@integrated-circuit.com

Tous droits strictement réservés. Reproduction ou communication à des tiers interdite sous quelque forme que ce soit sans autorisation écrite du propriétaire. Propriété de c FCI. Droits de reproduction FCI.



All rights strictly reserved. Reproduction or issue to third parties in any form whatsoever is not permitted without written authority from the proprietor. Property of FCI. Copyright FCI.

PRODUCT NUMBER
51534-XXXX- NOTE: ②
SEE SHEET 3



RECOMMENDED PCB LAYOUT

mat'l code		NOTE 1		tolerances unless otherwise specified		CUSTOMER		FCI	
ltr	ecn no.	dr	date	linear	.XX±.01/.X±.3	COPY		www.fciconnect.com	
H	DG06-0011	CS	01/09/06	angles	.XXX±.005/.XX±.13	projection		title	
J	DG08-0266	WD	09/21/08		.XXXX±.0020/.X±.051	INCH/MM		2P + 24S + 2P	
				dr	0°±2°	scale		RIGHT ANGLE SOLDER HEADER	
				enr	D. WOLFORD 10/14/98	A		product family	
				chr	J. BROWN 10/14/98	1:1		PWRBLADE	
				appd	J. BROWN 10/14/98			code	
sheet index	revision sheet	J	J	J				213	
		1	2	3				sheet	
								1 of 3	

Pro/E

PDM: Rev:3

STAT: US: Released

Printed: Dec 20, 2010

Tous droits strictement réservés. Reproduction ou communication à des tiers interdite sans quelque forme que ce soit sans autorisation écrite du propriétaire. Propriété de c FCI. Droits de reproduction FCI.

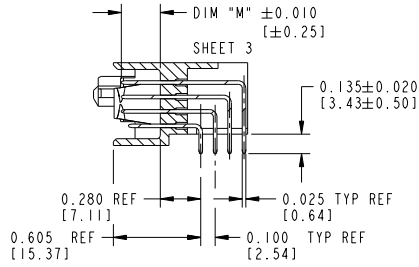
All rights strictly reserved. Reproduction or issue to third parties in any form whatsoever is not permitted without written authority from the proprietor. Property of FCI. Copyright FCI.

1 | 2

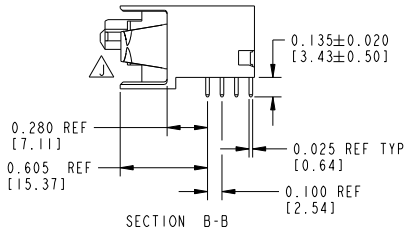
3 |

4

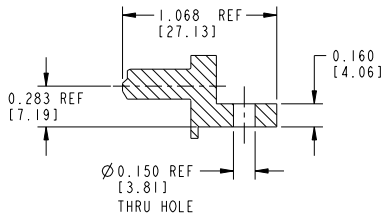
PRODUCT NUMBER
51534-XXYY --
NOTE: ②
SEE SHEET 3



SECTION A-A



SECTION B-B



SECTION C-C

mat'l code		NOTE 1		tolerances unless otherwise specified		CUSTOMER		FCI	
lfr	ecm no.	dr	date	linear	.XX±.01/.X±.3	COPY		www.fciconnect.com	
J				angles	.XXX±.005/.XX±.13	projection		title	
				dr	.XXX±.0020/.X±.051	INCH/MM		2P + 24S + 2P	
				enr	0°±2°	INCH/MM		RIGHT ANGLE SOLDER HEADER	
				chr		scale		product family	
				appd		1:1		PWRBLADE	
								code	
								213	
								sheet	
								2	
sheet index	revision sheet								

Pro/E

PDM: Rev:3

STATUS: Released

Printed: Dec 20, 2010

1 | 2

4

Tous droits strictement réservés. Reproduction ou communication à des tiers interdite sous quelque forme que ce soit sans autorisation écrite du propriétaire. Propriété de c FCI. Droits de reproduction FCI.

All rights strictly reserved. Reproduction or issue to third parties in any form whatever is not permitted without written authority from the proprietor. Property of FCI. Copyright FCI.

1 | 2

3 |

4

PRODUCT No.	ROWS	E1	POWER		SIGNAL						POWER		E2		
			P1	P2	1	2	3	4	5	6	P3	P4			
51534-XX001- NOTE: ②	D C B A		PA	PA	UUUUUU	TTTTTT	SSSSSS	RRRRRR	UUUUUU	TTTTTT	SSSSSS	RRRRRR	PA	PA	

PRODUCT No.	ROWS	E1	POWER		SIGNAL						POWER		E2		
			P1	P2	1	2	3	4	5	6	P3	P4			
51534-XX002- NOTE: ②	D C B A		PA	PA	UUUUUU	TTTTTT	SSSSSS	RRRRRR	UUUUUU	TTTTTT	SSSSSS	RRRRRR	PA	PA	

PCB NOTES:

- ALL DIMENSIONS ARE BASIC UNLESS OTHERWISE SPECIFIED.
- ALL THROUGH HOLES ARE LOCATED WITH A TRUE POSITION OF 0.004[0.10]
- ALL HOLE DIAMETERS ARE FINISHED HOLE SIZE
- Ø0.158 [4.01] THROUGH HOLES ARE UNPLATED
- Ø0.0453±0.0010[1.151±0.025] DRILLED HOLES PLATED WITH 0.0003[0.008] MIN SnPb OVER 0.001[0.03] TO 0.003[0.08] Cu PLATING TO ACHIEVE A 0.040±0.003[1.02±0.07] HOLE
- △SYMBOL WILL BE NEXT TO ANY DIMENSION, VIEW, OR NOTE WHICH HAS BEEN MODIFIED WITH THE CURRENT DRAWING REVISION.

CONNECTOR NOTES:

- HOUSING MATERIAL: UL94 V-0 GLASS FILLED HIGH TEMP. THERMOPLASTIC.
SIGNAL PIN MATERIAL: COPPER ALLOY.
POWER CONTACT MATERIAL: COPPER ALLOY.
- MANUFACTURER'S NAME, P/N, AND DATE CODE TO APPEAR ON THIS SURFACE.
- SEE ITEM 1 & 2 IN PRINT 10064183 FOR PLATING SPEC OF 51534-XX00X AND 51534-XX00XLF RESPECTIVELY.
- PRODUCT SPECIFICATION GS-12-149.

ITEM NO.	DIM "M"	CONTACT TYPE
E	0.220 [5.59]	SIGNAL
F	0.220 [5.59]	SIGNAL
R	0.270 [6.86]	SIGNAL
S	0.270 [6.86]	SIGNAL
T	0.270 [6.86]	SIGNAL
U	0.270 [6.86]	SIGNAL
PA	N/A [N/A]	POWER

mat'l code				NOTE 1		tolerances unless otherwise specified		CUSTOMER		FCI	
ltr	ecn no.	dr	date	linear	.XX±.01/.X±.3	projection	COPY		www.fciconnect.com		
J				angles	.XXX±.005/.XX±.13		title		2P + 24S + 2P		
				dr	.XXX±.0020/.X±.051	INCH/MM	product family		PWRBLADE		
				enr	0°±2°	scale	size		213		
				chr	D. WOLFORD 10/14/98	1:1	dwg no		51534		
				appd	J. BROWN 10/14/98		sheet		3		
sheet index	revision sheet										

1 | 2

Pro/E

PDM: Rev:3

STAT US: Released

Printed: Dec 20, 2010