

## Excellent Integrated System Limited

Stocking Distributor

Click to view price, real time Inventory, Delivery & Lifecycle Information:

[FCI](#)  
[55720-001](#)

For any questions, you can email us directly:  
[sales@integrated-circuit.com](mailto:sales@integrated-circuit.com)

rev	ecn no	dr	date
C	V03-0663	TAB	2003-06-12
D	V06-0052	VS	2005-10-14
E	V06-0558	LP	2006-06-12
F	V07-0440	LP	2007-07-05
G	V08-0198	HTB	2008-04-28

A

B

C

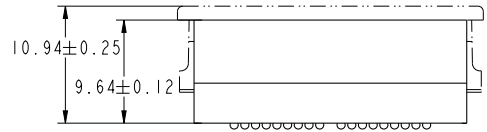
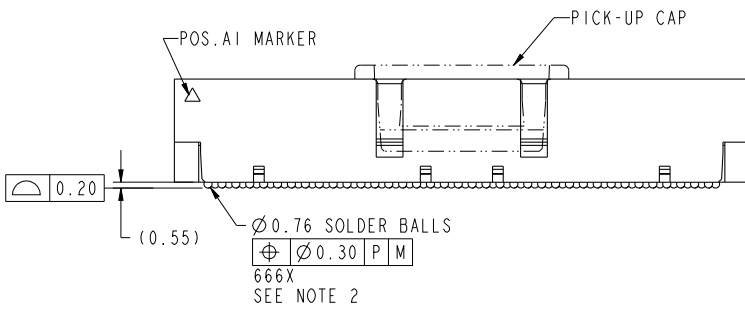
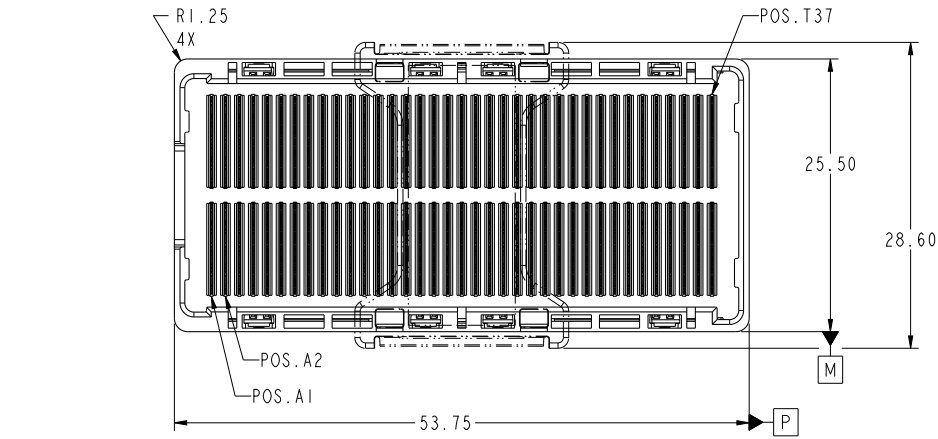
D

A

B

C

D



spec ref	-			dr	Bill Lin	2010/02/02	projection	mm		size	A4	scale	1:1	
tolerance std	TOLERANCES UNLESS OTHERWISE SPECIFIED			eng	Nickor Zuo	2011/06/09				ecn no		ELX-DG-003943-1		
-	-			chr	Alex Cao	2011/06/24				product family		GIG-Array	rel level	
surface	3/2	linear	0.X ±0.30	appr	Pei-Ming Zheng	2011/06/27				title		GIG-Array		
			0.XX ±0.10							dwg no		55720		
			0.XXX ±0.05									rev		J
ASME Y14.5		angular	0° ±2°	www.fci.com			cat. no.			-		Product - Customer Drw		sheet 1 of 5

Print File - REV C - 2009-08-09

1

2

3

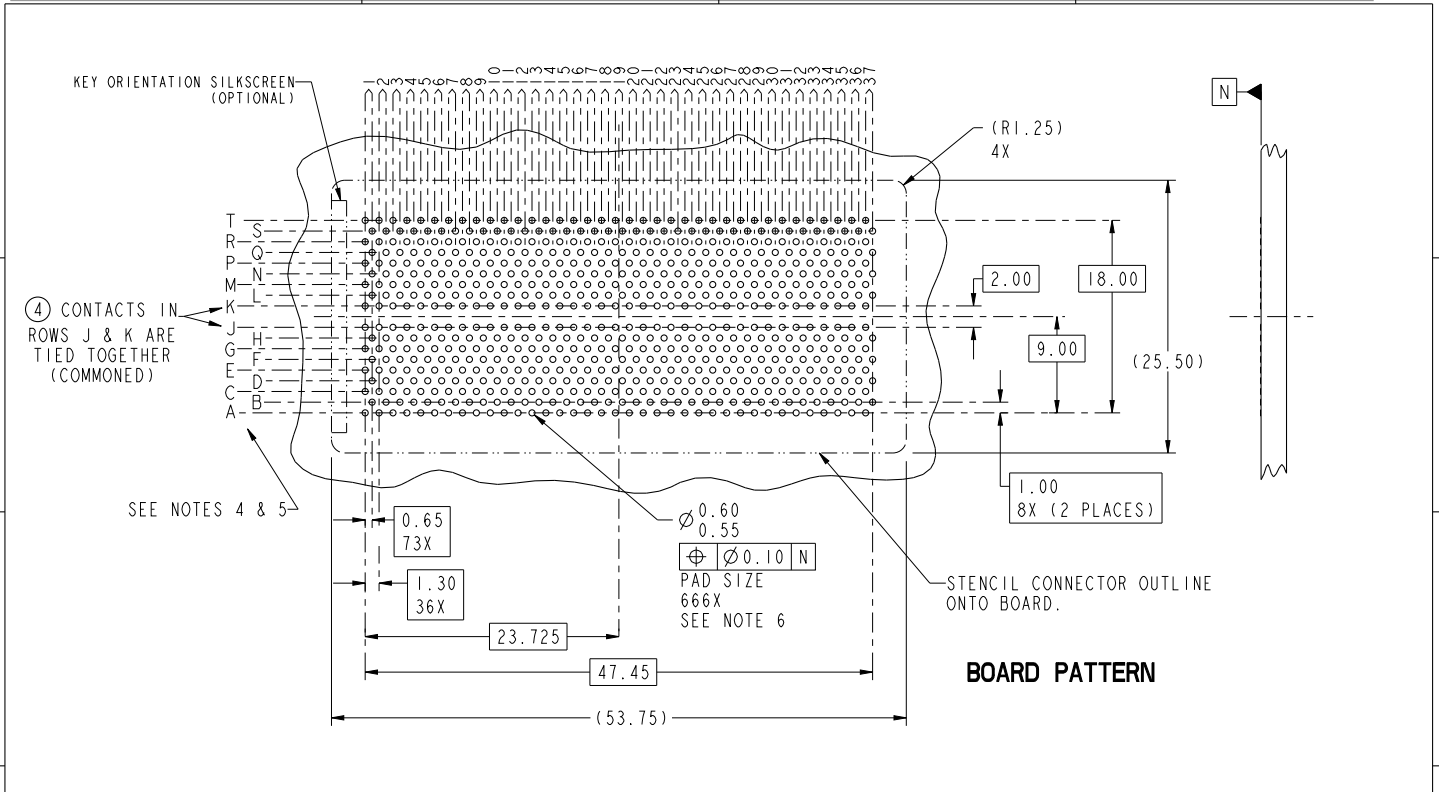
PDS: Rev :J

STATUS:Released

Printed: Jun 27, 2011



Copyright FCI.



spec ref	-	dr	Bill Lin	2010/02/02	projection	mm	size	A4	scale	1:1
tolerance std	TOLERANCES UNLESS OTHERWISE SPECIFIED	eng	Nickor Zuo	2011/06/09		mm	ec n no	ELX-DG-003943-1	rel level	Released
-		chr	Alex Cao	2011/06/24						
surface	3/2	appr	Pei-Ming Zheng	2011/06/27	product family	GIG-Array	dwg no	55720	rev	J
ASME Y14.5	linear									
	angular									

Copyright FCI.

A

B

C

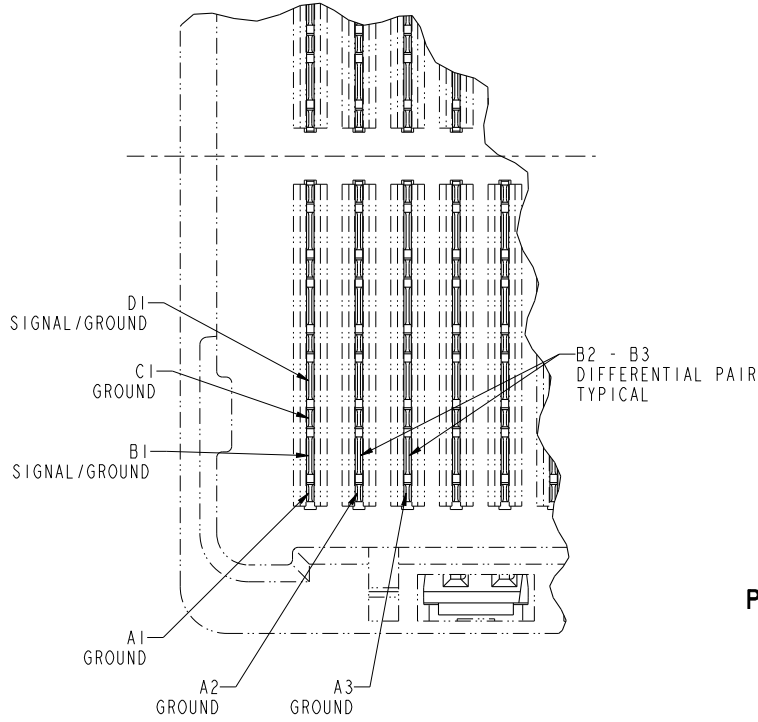
D

A

B

C

D



**PLUG INTERFACE DESCRIPTION**

spec ref	-			dr	Bill Lin	2010/02/02	projection	mm	size	A4	scale	1:1	
tolerance std	TOLERANCES UNLESS OTHERWISE SPECIFIED			eng	Nickor Zuo	2011/06/09			ec n no	ELX-DG-003943-1			
-	-			chr	Alex Cao	2011/06/24				product family	rel level	Released	
-	-			appr	Pei-Ming Zheng	2011/06/27	GIG-Array					www.fci.com cat. no. - Product - Customer Drw	dwg no 55720
surface		linear	0.X	±0.30				GIG-Array 10mm PLUG ASSY. 296 SIG. POS.			sheet 3 of 5		
ASME Y14.5			0.XX	±0.10									
			0.XXX	±0.05									
	angular	0°	±2°										

Prod File - REV C - 2009-08-09

1

2

3

PDS: Rev :J

STATUS:Released

Printed: Jun 27, 2011



Copyright FCI.

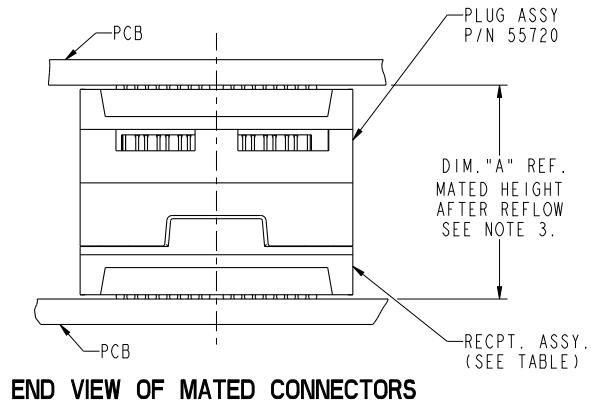
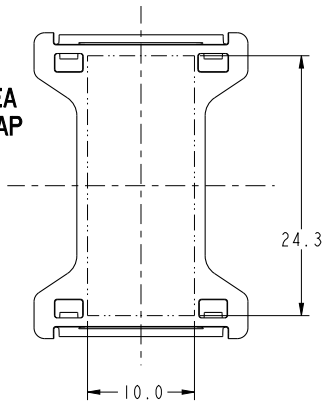
A

B

C

D

**FLAT AREA  
PICK-UP CAP**



**END VIEW OF MATED CONNECTORS**

DIM. "A"	RECPT. ASSY. P/N
15	55701
25	55733

A

B

C

D



Copyright FCI.

spec ref		-		dr	Bill Lin	2010/02/02	projection	mm	size	A4	scale	1:1
tolerance std		TOLERANCES UNLESS OTHERWISE SPECIFIED		eng	Nickor Zuo	2011/06/09			ecn no		ELX-DG-003943-1	
-		-		chr	Alex Cao	2011/06/24			product family		GIG-Array	
-		-		appr	Pei-Ming Zheng	2011/06/27	product family		GIG-Array		rel level	Released
surface	3/2	linear	0.X				title		GIG-Array		rev	
			0.XX				title		10mm PLUG ASSY. 296 SIG. POS.		J	
			0.XXX				cat. no.		-		Product - Customer Drw	
ASME Y14.5		angular	0°				cat. no.		-		sheet 4 of 5	

Print File - REV C - 2009-08-09

1

2

3

PDS: Rev :J

STATUS:Released

Printed: Jun 27, 2011

PRODUCT NUMBER	SOLDER BALL COMPOSITION	CONTACT PLATING PERFORMANCE LEVEL
55720-001	STANDARD (EUTECTIC)	PERFORMANCE-BASED PLATING, QUALIFIED TO MEET THE REQUIREMENTS OF FCI PRODUCT SPECIFICATION GS-12-192, INCLUDING TELCORDIA CENTRAL OFFICE
55720-001LF	LEADFREE	
55720-201	STANDARD (EUTECTIC)	
55720-201LF	LEADFREE	

Au over Ni

NOTES:

- ① MATERIAL:  
HOUSING: LCP  
CONTACT: COPPER ALLOY  
PLATING (CONTACT): Au OVER Ni.  
UL RATING: 94 V-0  
SOLDER BALL: (SEE TABLE) EUTECTIC  
Snpb OR LEADFREE 95.5 Sn/4Ag/0.5Cu
- ② SOLDER BALLS WILL NOT BE PERFECT SHPERICAL SHAPE DUE TO REFLOW ATTACHMENT.
- ③ MATED HEIGHT EFFECTED BY CUSTOMERS' PCB PAD SIZE, PLATING, SOLDER REFLOW PROFILE & SOLDER PASTE.
- ④ CONTACTS IN ROWS A,C,E,G,J,K,M,P,R AND T ARE SINGLE BEAM CONTACTS, TYPICALLY USED AS GROUND PINS. (NOTE: CONTACTS IN ROWS J & K ARE TIED TOGETHER (COMMONED))
- ⑤ CONTACTS IN ROWS B,D,F,H,L,N,Q AND S ARE DUAL BEAM CONTACTS, TYPICALLY USED AS SIGNAL PINS.

NOTES CONTINUED

- ⑥ SPECIFIED POSITIONAL TOLERANCE DEFINES PAD TO PAD LOCATION WITHIN LAND PATTERN. POSITIONAL TOLERANCE OF LAND PATTERN TO FUDICIAL MARKS OR PCB DATUMS SHALL BE DEFINED BY CUSTOMER. FOR RECOMMENDED PRODUCT APPLICATION AND PCB DESIGN DETAILS, SEE DOC. NO. GS-20-016.
- ⑦ FOR PROPER APPLICATION FOLLOW FCI APPLICATION SPECIFICATION GS-20-033 LEADFREE SOLDER BALLS WILL NOT SOLDER PROPERLY IN A LEADED SOLDER PROCESS DUE TO A HIGHER REFLOW TEMPERATURE. LEADFREE PRODUCT IS THERFORE NOT BACKWARDS COMPATIBLE WITH LEADED OR SOME SOLDERING APPLICATIONS. REFERENCE FCI APPLICATION SPECIFICATION.
- ⑧ THIS PRODUCT MEETS THE EUROPEAN UNION DIRECTIVES AND OTHER COUNTRY REGULATIONS AS DESCRIBED IN GS-22-008. PRODUCT MEETING WITH THIS DIRECTIVE IS IDENTIFIED IN THE LOT CODE NUMBER MARKED ON EACH PART BY HAVING AN "X" IN THE SEVENTH CHARACTER POSITION.



Copyright FCI.

spec ref	-			dr	Bill Lin	2010/02/02	projection	mm		size	A4	scale	1:1		
tolerance std	TOLERANCES UNLESS OTHERWISE SPECIFIED			eng	Nickor Zuo	2011/06/09		← →		ecn no	ELX-DG-003943-1				
-				chr	Alex Cao	2011/06/24				product family	GIG-Array		rel level	Released	
surface	3/2	linear	0.X	±0.30		GIG-Array	title	GIG-Array	10mm PLUG ASSY. 296 SIG. POS.	dwg no	55720		rev	J	
			0.XX	±0.10							www.fci.com	cat. no.	-	Product - Customer Drw	sheet 5 of 5
ASME Y14.5		angular	0°	±2°											

Prod File - REV C - 2009-06-09