

## Excellent Integrated System Limited

Stocking Distributor

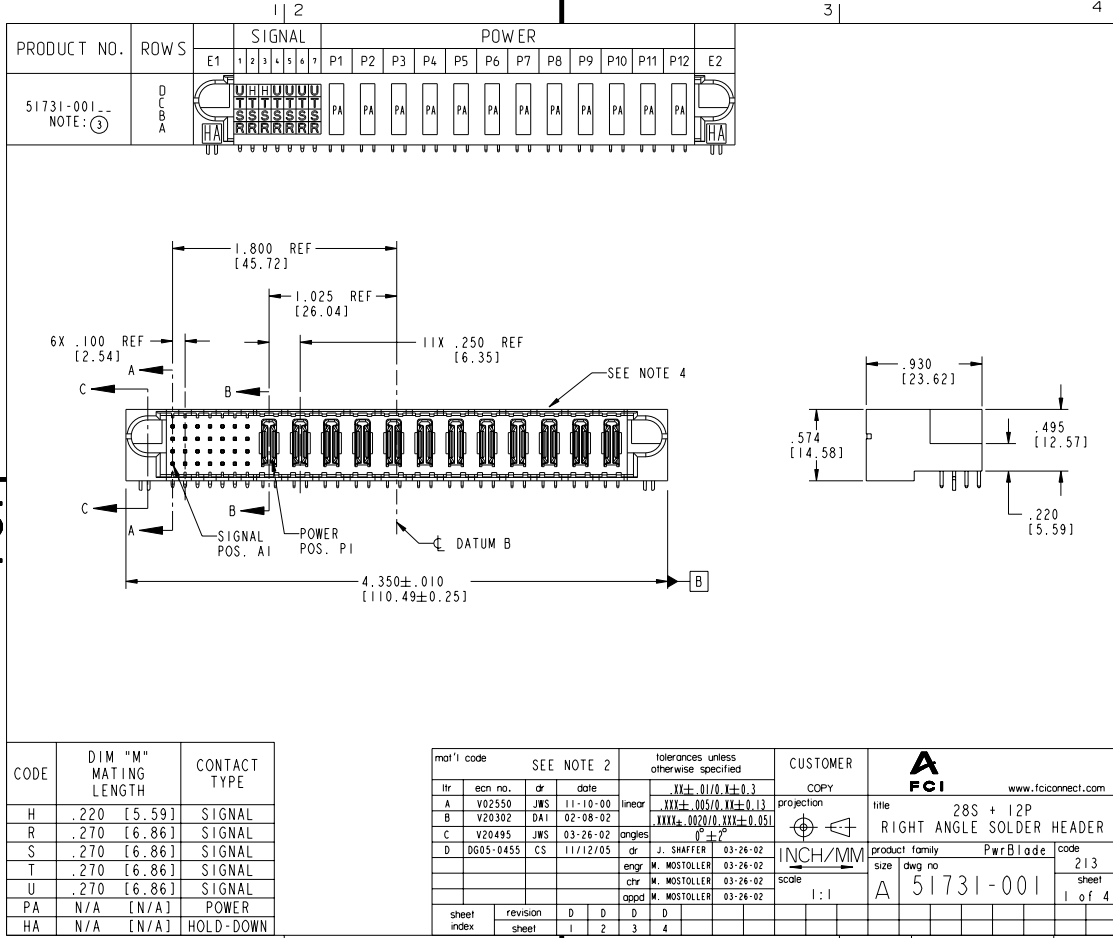
Click to view price, real time Inventory, Delivery & Lifecycle Information:

[FCI](#)  
[51731-001](#)

For any questions, you can email us directly:  
[sales@integrated-circuit.com](mailto:sales@integrated-circuit.com)

Tous droits strictement réservés. Reproduction ou communication de ces lignes inférieures sous quelque forme que ce soit sans autorisation écrite du propriétaire. Propriété de c FCI. Droits de reproduction FCI.

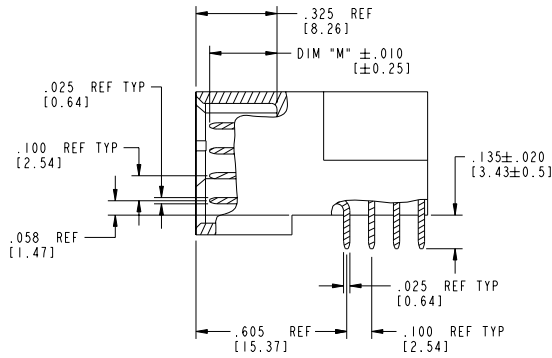
All rights strictly reserved. Reproduction or issue in any form without written authority from the proprietor. Property of FCI. Copyright FCI.



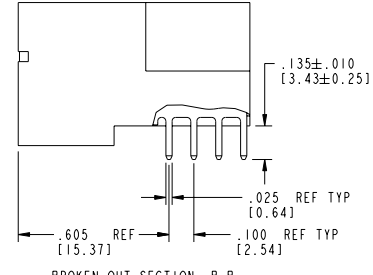
Tous droits strictement réservés. Reproduction ou communication de ces lignes interdit sans autorisation écrite du propriétaire. Property of FCI. Copyright FCI.

All rights strictly reserved. Reproduction or issue in third parties in any form without written authority from the proprietor. Property of FCI. Copyright FCI.

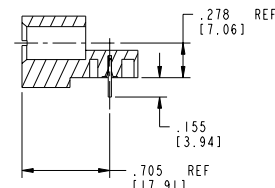
PRODUCT NUMBER  
51731-001  
NOTE: ③



BROKEN-OUT SECTION A-A  
SCALE 2:1



BROKEN-OUT SECTION B-B  
SCALE 2:1



SECTION C-C

mat'l code		SEE NOTE 2	tolerances unless otherwise specified	CUSTOMER	FCI		www.fciconnect.com
ltr	ecm no.	dr	date	linear	XX±.01/0.XX±0.3	COPY	
D				linear	XXX±.005/0.XX±0.13	projection	title 28S + 12P
				angles	XXX±.0020/0.XX±0.051	INCH/MM	RIGHT ANGLE SOLDER HEADER
				dr	0° ± 7°	product family	PwrBlade
				engr	J. SHAFFER 03-26-02	size	dwg no 51731-001
				chr	M. MOSTOLLER 03-26-02	scale	A
				appd	M. MOSTOLLER 03-26-02		code 213
sheet index	revision sheet						sheet 2 of 4

Pro/E

code code 22526

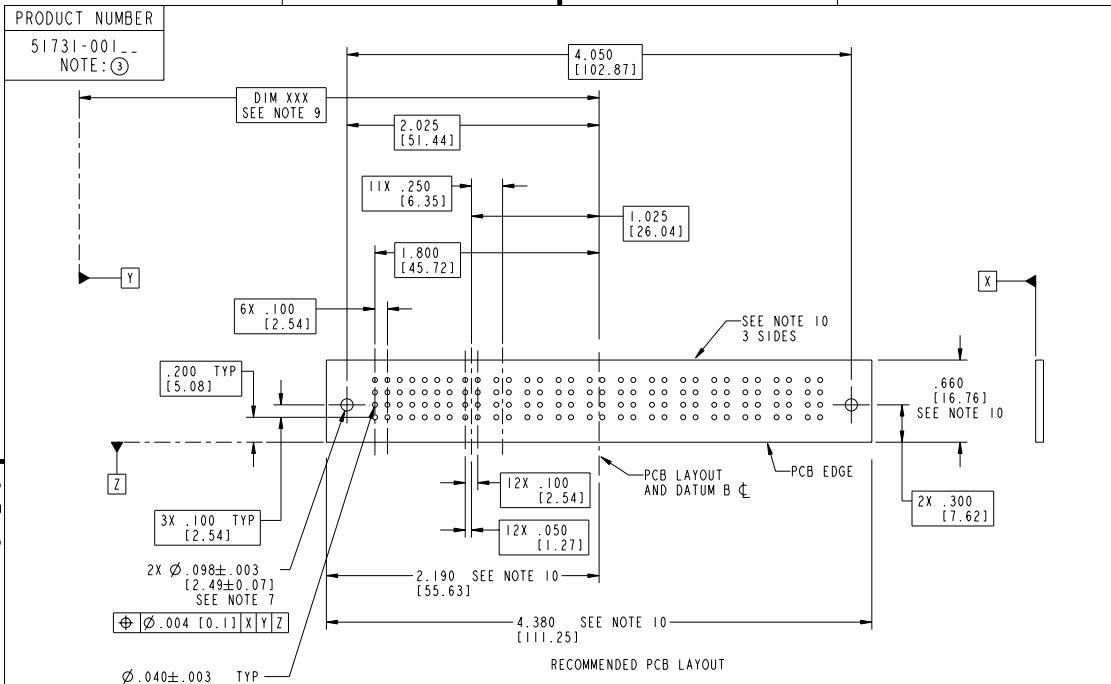
PDM: Rev:D

STATUS:Released

Printed: Dec 20, 2010

Tous droits strictement réservés. Reproduction ou communication de ces lignes interdite sans autorisation écrite du propriétaire. Propriété de c FCI. Droits de reproduction FCI.

All rights strictly reserved. Reproduction or issue in any form without written authority from the proprietor. Property of FCI. Copyright FCI.



mat'l code		SEE NOTE 2	tolerances unless otherwise specified	CUSTOMER		 www.fciconnect.com
ltr	ecm no.	dr	date	COPY		
D				linear	$XX \pm .01/0$ $XX \pm 0.3$ $XXX \pm .005/0$ $XXX \pm 0.13$ $XXX \pm .0025/0$ $XXX \pm 0.051$	title 28S + 12P RIGHT ANGLE SOLDER HEADER
				angles	$0^\circ \pm 7^\circ$	projection 
				dr	J. SHAFFER 03-26-02	product family PwrBlade
				engr	W. MOSTOLLER 03-26-02	size A
				chr	W. MOSTOLLER 03-26-02	dwg no 51731-001
				appd	W. MOSTOLLER 03-26-02	code 213
sheet index	revision sheet					sheet 3 of 4

Pro/E 3 code code 22526 4

Tous droits strictement réservés. Reproduction ou communication, en tout ou en partie, sans autorisation écrite du propriétaire. Propriété de FCI. Droits de reproduction FCI.

All rights strictly reserved. Reproduction or issue in any form without written authority from the proprietor. Property of FCI. Copyright FCI.

PRODUCT NUMBER  
51731-001  
NOTE: ③

NOTES:

1. DIMENSIONS AND TOLERANCES ARE IN ACCORDANCE WITH ASME Y14.5M, 1994 UNLESS OTHERWISE SPECIFIED.

CONNECTOR NOTES:

2. HOUSING MATERIAL: UL 94 V-0 GLASS FILLED HIGH-TEMP THERMOPLASTIC  
POWER CONTACT MATERIAL: COPPER ALLOY  
SIGNAL PIN MATERIAL: COPPER ALLOY

3. PLATING:

51731-001 Singal Pin: 30u"/0.76um Au OVER 50u"/1.27um Ni ON THE CONTACT AREA.  
AND 100u"/2.54um SnPb PLATING OVER 50u"/1.27um Ni ON THE TERMINATION SECTION.  
Power Pin: 30u"/0.76um Au OVER 50u"/1.27um Ni ON THE CONTACT AREA.  
AND 100u"/2.54um SnPb PLATING OVER 50u"/1.27um Ni ON THE TERMINATION SECTION.

51731-001LF Singal Pin: 30u"/0.76um Au OVER 50u"/1.27um Ni ON THE CONTACT AREA.  
AND 78u"/2.00um Sn PLATING OVER 50u"/1.27um Ni ON THE TERMINATION SECTION.  
Power Pin: 30u"/0.76um Au OVER 50u"/1.27um Ni ON THE CONTACT AREA.  
AND 78u"/2.00um Sn PLATING OVER 50u"/1.27um Ni ON THE TERMINATION SECTION.

PART NUMBER model.name: 1LF MEETS EUROPEAN UNION DIRECTIVE AND OTHER ICOUNTRY REGULATIONS AS DESCRIBED IN GS-22-008.

THE HOUSING WILL WITHSTAND EXPOSURE TO 260° PEAK TEMPERATURE FOR 10 SECONDS IN A WAVE SOLDER APPLICATION WITH A CIRCUIT BOARD.

4. MANUFACTURER'S NAME, P/N, AND DATE CODE TO APPEAR ON THIS SURFACE.

5. PRODUCT SPECIFICATION GS-12-149.  
APPLICATION SPECIFICATION BUS-20-067.

PCB NOTES:

- 6. ALL HOLE DIAMETERS ARE FINISHED HOLE SIZE.
- 7. MOUNTING HOLES, WHERE APPLICABLE, ARE UNPLATED.
- 8.  $\varnothing .0453 \pm 0.0010$  [1.151  $\pm$  0.025] DRILLED HOLES PLATED WITH 0.0003 [0.008] MIN SnPb OVER .001 [0.03] TO .003 [0.08] Cu PLATING TO ACHIEVE  $\varnothing .040 \pm .003$  [1.02  $\pm$  .07] HOLE.

9. "DIM XXX" TO BE DETERMINED BY THE CUSTOMER.

10. CONNECTOR KEEP-OUT ZONE.

mat'l code		SEE NOTE 2		tolerances unless otherwise specified		CUSTOMER		FCI	
ltr	ecn no.	dr	date	linear	projection	COPY		www.fciconnect.com	
0				$.XX \pm .01/0$ $.XX \pm 0.3$	$.XXX \pm .005/0$ $.XX \pm 0.13$	title		28S + 12P	
				angles	$.XXX \pm .0020/0$ $.XX \pm 0.051$	RIGHT ANGLE SOLDER HEADER		code	
				dr	$0^\circ \pm 7^\circ$	product family		PwrBlade	
				enr	J. SHAFFER 03-26-02	size		51731-001	
				chr	M. MOSTOLLER 03-26-02	scale		A	
				appd	M. MOSTOLLER 03-26-02	sheet		213	
sheet index	revision sheet					sheet		4 of 4	

cage code 22526

PDM: Rev:D

STATUS: Released

Printed: Dec 20, 2010