

Excellent Integrated System Limited

Stocking Distributor

Click to view price, real time Inventory, Delivery & Lifecycle Information:

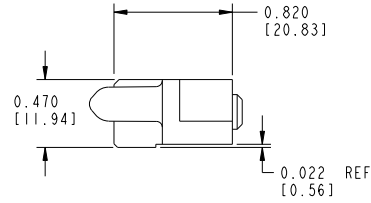
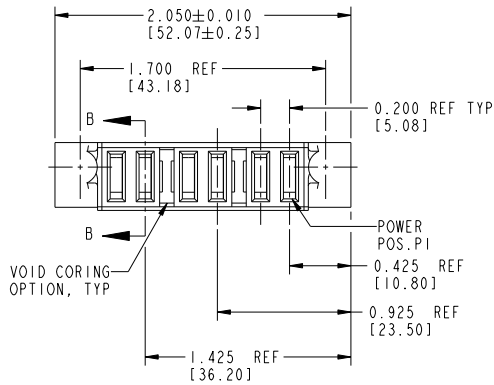
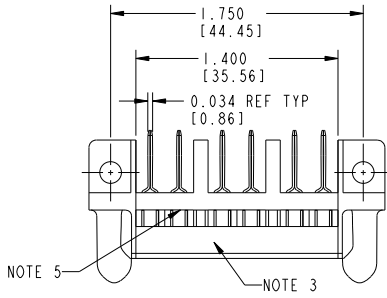
[FCI](#)
[51871-004](#)

For any questions, you can email us directly:
sales@integrated-circuit.com

Tous droits strictement réservés. Reproduction ou communication à des tiers interdite sans quelque forme que ce soit sans autorisation écrite du propriétaire. Propriété de c FCI. Droits de reproduction FCI.

All rights strictly reserved. Reproduction or issue to third parties in any form whatsoever is not permitted without written authority from the proprietor. Property of FCI. Copyright FCI.

PRODUCT NUMBER
51871-004_
NOTE: 2



| CODE | DIM "M" ±0.010 [0.25] | TERMINATION AREA ±0.010 [0.25] | CONTACT TYPE |
|------|--------------------------|--------------------------------------|-----------------|
| PG | 0.042 [1.07] | 0.393 [9.98] | POWER |
| PH | 0.092 [2.34] | 0.393 [9.98] | POWER |

| mat'l code | | | | NOTE 1 | | tolerances unless otherwise specified | | CUSTOMER | |
|-------------|----------------|-------|----------|--------|-------------------------|---------------------------------------|--|--------------------------------------|--|
| ltr | ech no. | dr | date | linear | .XX±.01/0.X±0.3 | projection | | www.fciconnect.com | |
| A | V12841 | EDT | 12/18/01 | angles | .XXX±.005/0.XX±0.13 | COPY | | title 6P RIGHT ANGLE RECEPTACLE | |
| B | V21626 | TAB | 10/11/02 | | .XXXX±.0020/0.XXX±0.050 | INCH/MM | | product family PwrBlade code 213 | |
| C | DG05-0240 | GuoJM | 07/26/05 | | 0°±? | scale 1:1 | | size dwg no A 51871-004 sheet 1 of 2 | |
| D | DG08-0251 | W D | 09/16/08 | dr | E. TREECE 12/18/01 | | | | |
| | | | | enr | E. TREECE 10-10-00 | | | | |
| | | | | chr | M. MOSTOLLER 12/18/01 | | | | |
| | | | | appd | M. MOSTOLLER 12/18/01 | | | | |
| sheet index | revision sheet | D 1 | D 2 | | | | | | |

1 | 2

Pro/E

PDM: Rev: D

STAT: US: Released

Printed: Dec 20, 2010

Tous droits strictement réservés. Reproduction ou communication à des tiers interdite sous quelque forme que ce soit sans autorisation écrite du propriétaire. Propriété de c FCI. Droits de reproduction FCI.

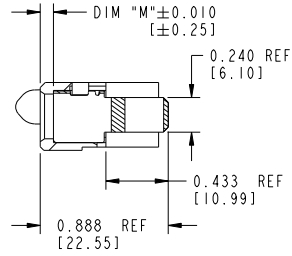
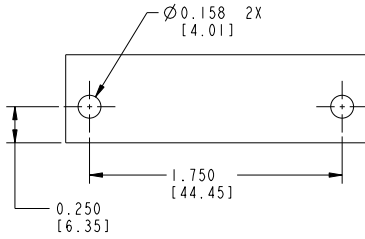


All rights strictly reserved. Reproduction or issue to third parties in any form whatsoever is not permitted without written authority from the proprietor. Property of FCI. Copyright FCI.

| | | | | | | | | | | |
|----------------------|----------------------|-------|--|--|--|--|--|--|--|----|
| PRODUCT No. | ROWS | POWER | | | | | | | | E1 |
| | E2 P6 P5 P4 P3 P2 P1 | E1 | | | | | | | | |
| 51871-004 NOTE: 2 | D C B A | | | | | | | | | |

CONNECTOR NOTES:

- HOUSING MATERIAL: UL 94 V-0 GLASS FILLED HIGH TEMP THERMOPLASTIC
POWER CONTACT MATERIAL: COPPER ALLOY
- SEE ITEM 5 & 6 IN PRINT 10064183 FOR PLATING SPEC OF 51871-004 AND 51871-004LF RESPECTIVELY.
- "MANUFACTURER'S" NAME, P/N, AND DATE CODE TO APPEAR ON THIS SURFACE
- PRODUCT SPECIFICATION GS-12-149
- CONTACT RETENTION BAR NOT INSTALLED IN CONNECTOR. IT IS TO BE INSTALLED BY CUSTOMER. RETENTION BAR IS PACKAGED SEPARATELY. REFERENCE BUS-20-078 FOR CONTACT RETENTION BAR INSTALLATION.
- Δ SYMBOL WILL BE NEXT TO ANY DIMENSION, VIEW, OR NOTE WHICH HAS BEEN MODIFIED WITH THE CURRENT DRAWING REVISION.



SECTION B-B

| | | | | | | | | | |
|-------------|----------------|--------|------|---------------------------------------|------------------------|------------|------|---------------------------------|-----------|
| mat'l code | | NOTE 1 | | tolerances unless otherwise specified | | CUSTOMER | | FCI | |
| ltr | ech no. | dr | date | linear | .XX±.01/0.X±0.3 | projection | COPY | www.fciconnect.com | |
| D | | | | angles | .XXX±.005/0.XX±0.13 | | | title 6P RIGHT ANGLE RECEPTACLE | |
| | | | | dr | .XXX±.0020/0.XXX±0.050 | | | product family | PwrBlade |
| | | | | engr | E. TREECE 12/18/01 | scale | 1:1 | code | 213 |
| | | | | chr | E. TREECE 10-10-00 | | | size | 213 |
| | | | | appd | M. MOSTOLLER 12/18/01 | | | dwg no | 51871-004 |
| sheet index | revision sheet | | | | | | | sheet | 2 of 2 |

1 | 2

Pro/E

PDM: Rev: D

STAT: US: Released

Printed: Dec 20, 2010

4

A

B