

Excellent Integrated System Limited

Stocking Distributor

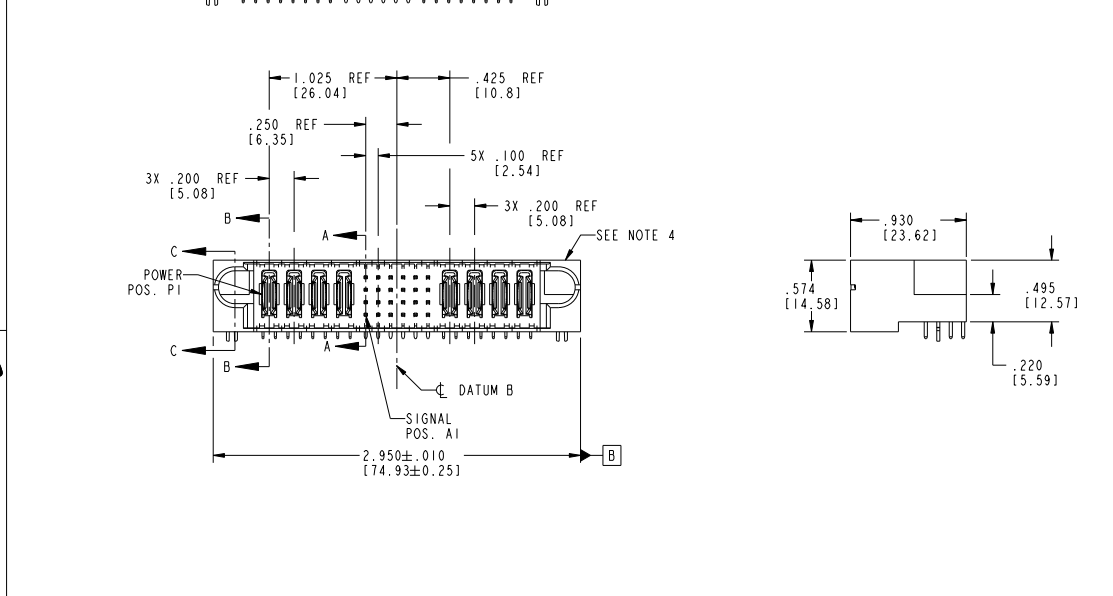
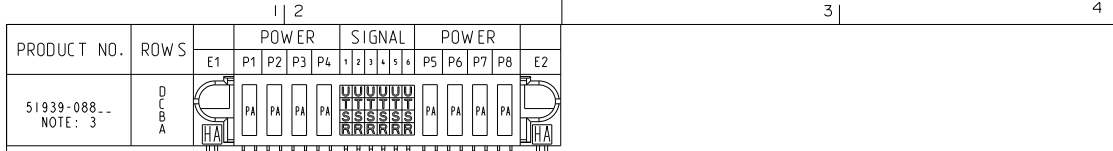
Click to view price, real time Inventory, Delivery & Lifecycle Information:

[FCI](#)
[51939-088](#)

For any questions, you can email us directly:
sales@integrated-circuit.com

Tous droits strictement réservés. Reproduction ou communication de ces lignes infidèle sans aucune forme ou de son sans autorisation écrite du propriétaire. Propriété de c FCI. Droits de reproduction FCI.

All rights strictly reserved. Reproduction or issue in any form without written authority from the proprietor. Property of FCI. Copyright FCI.



CODE	DIM "M"	MATING LENGTH	CONTACT TYPE
R	.270	[6.86]	SIGNAL
S	.270	[6.86]	SIGNAL
T	.270	[6.86]	SIGNAL
U	.270	[6.86]	SIGNAL
PA	N/A	[N/A]	POWER
HA	N/A	[N/A]	HOLD-DOWN

mat'l code				SEE NOTE 2		tolerances unless otherwise specified	
ltr	ecn no.	dr	date	linear	XX±.01/0.XX±0.3	projection	
A	V03-1169	TAB	10/28/03	linear	XXX±.005/0.XX±0.13	projection	
B	DG06-0014	JMG	01/13/06	linear	XXX±.0020/0.XX±0.051	projection	
C	DG09-0003	WD	01/17/09	angles	0°±	projection	
				dr	T. BRUNGARD 10/28/03	INCH/MM	
				enr	M. GRAY 10/28/03	scale	1:1
				chr	M. GRAY 10/28/03		
				oppd	M. GRAY 10/28/03		
sheet index	revision sheet	C	C	C	C		
		1	2	3	4		

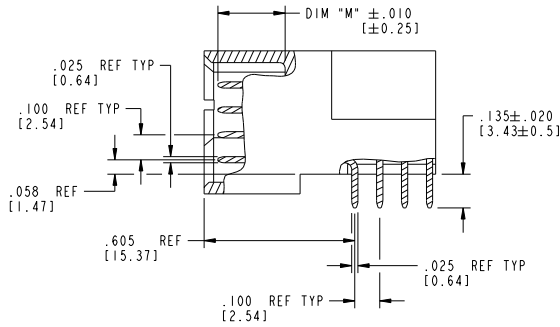
CUSTOMER		FCI	
COPY		www.fciconnect.com	
title		4P + 24S + 4P	
RIGHT ANGLE SOLDER HEADER		product family PwrBlade code 213	
size		dwg no 51939-088 sheet 1 of 4	
scale		1:1	

Tous droits strictement réservés. Reproduction ou communication, en des lieux interdite sans autorisation écrite du propriétaire. Propriété de c FCI. Droits de reproduction FCI.

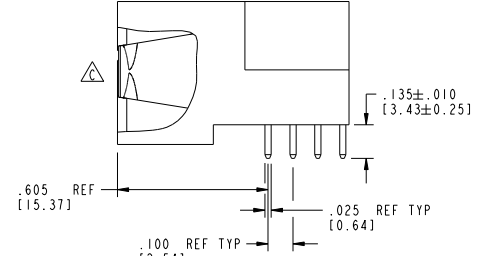


All rights strictly reserved. Reproduction or issue in third parties in any form without written authority from the proprietor. Property of FCI. Copyright FCI.

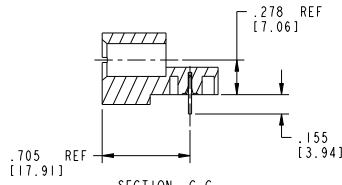
PRODUCT NUMBER
51939-088
NOTE: 3



BROKEN-OUT SECTION A-A
SCALE 2:1



BROKEN-OUT SECTION B-B
SCALE 2:1



SECTION C-C

mat'l code		SEE NOTE 2	tolerances unless otherwise specified		CUSTOMER	FCI		www.fciconnect.com	
ltr	ecm no.	dr	date	linear	XX±.01/0.XX±0.3	COPY		title	
C				linear	XXX±.005/0.XX±0.13	projection		4P + 24S + 4P	
				angles	XXX±.0020/0.XX±0.051	INCH/MM		RIGHT ANGLE SOLDER HEADER	
				dr	0°±	scale		product family	
				enr	T. BRUNGARD 10/28/03	1:1		PwrBlade	
				chr	M. GRAY 10/28/03			size	
				oppd	M. GRAY 10/28/03			dwg no	
sheet index	revision sheet							51939-088	
								213	
								sheet 2 of 4	

Pro/E

3

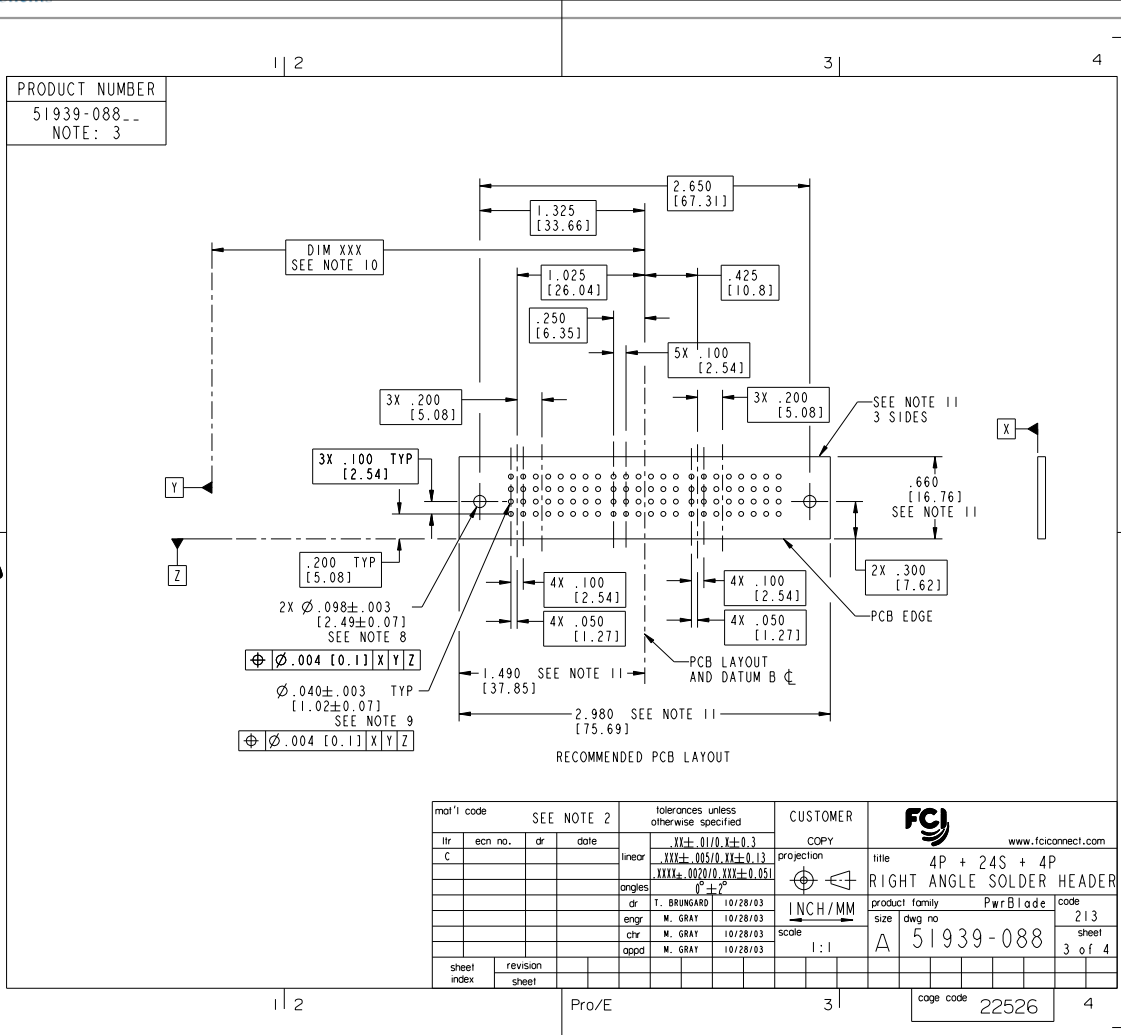
cage code 22526

4

Tous droits strictement réservés. Reproduction ou communication, en des lieux interdite sans aucune forme que ce soit sans autorisation écrite du propriétaire. Propriété de c FCI. Droits de reproduction FCI.



All rights strictly reserved. Reproduction or issue in third parties in any form whatever is not permitted without written authority from the proprietor. Property of FCI. Copyright FCI.



mat'l code		SEE NOTE 2	tolerances unless otherwise specified	CUSTOMER		www.fciconnect.com
ltr	ecm no.	dr	date	linear	projection	
C				$.XX \pm .01/0.XX \pm 0.13$		4P + 24S + 4P
				$.XXX \pm .005/0.XX \pm 0.051$		RIGHT ANGLE SOLDER HEADER
				angles	$0^\circ \pm 2^\circ$	product family
				dr	T. BRUNGARD 10/28/03	PwrBlade
				enrg	M. GRAY 10/28/03	code
				chr	M. GRAY 10/28/03	213
				oppd	M. GRAY 10/28/03	sheet
						3 of 4
sheet index	revision sheet					

Tous droits strictement réservés. Reproduction ou communication, en des lieux interdite
 sous quelque forme que ce soit sans autorisation écrite du propriétaire.
 Propriété de FCI. Droits de reproduction FCI.

All rights strictly reserved. Reproduction or issue in third parties in any
 form whatever is not permitted without written authority from the proprietor.
 Property of FCI. Copyright FCI.

PRODUCT NUMBER
 51939-088__
 NOTE: 3

NOTES:

1. DIMENSIONS AND TOLERANCES ARE IN ACCORDANCE WITH ASME Y14.5M, 1994 UNLESS OTHERWISE SPECIFIED.

CONNECTOR NOTES:

- 2. HOUSING MATERIAL: UL 94 V-0 GLASS FILLED HIGH-TEMP THERMOPLASTIC
 POWER CONTACT MATERIAL: COPPER ALLOY
 SIGNAL PIN MATERIAL: COPPER ALLOY
 - 3. SEE ITEM 1 & 2 IN PRINT 10064183 FOR PLATING SPEC OF 51939-088 AND 51939-088LF RESPECTIVELY.
 - 4. MANUFACTURER'S NAME, P/N, AND DATE CODE TO APPEAR ON THIS SURFACE.
 - 5. PRODUCT SPECIFICATION GS-12-149.
 APPLICATION SPECIFICATION BUS-20-067.
 - 6. PACKAGED IN TRAYS.
- PCB NOTES:
- 7. ALL HOLE DIAMETERS ARE FINISHED HOLE SIZE.
 - 8. MOUNTING HOLES, WHERE APPLICABLE, ARE UNPLATED.
 - 9. $\varnothing .0453 \pm .0010$ [1.151 \pm 0.025] DRILLED HOLES PLATED WITH
 .0003 [0.008] MIN SnPb OVER .001 [0.03]
 TO .003 [0.08] Cu PLATING TO ACHIEVE
 $\varnothing .040 \pm .003$ [1.02 \pm .07] HOLE.
 - 10. "DIM XXX" TO BE DETERMINED BY THE CUSTOMER.
 - 11. CONNECTOR KEEP-OUT ZONE.
 - 12. A Δ SYMBOL WILL BE NEXT TO ANY DIMENSION, VIEW, OR NOTE WHICH HAS BEEN MODIFIED
 WITH THE CURRENT DRAWING REVISION.

mat'l code		SEE NOTE 2		tolerances unless otherwise specified		CUSTOMER	
ltr	ecm no.	dr	date	linear	angular	COPY	
C				$.XX \pm .01/0$	$.YY \pm 0.3$	www.fciconnect.com	
				$.XXX \pm .005/0$	$.YY \pm 0.13$	projection	title
				$.XXX \pm .0020/0$	$.YY \pm 0.051$		4P + 24S + 4P
				angles	$0^\circ \pm 2^\circ$		RIGHT ANGLE SOLDER HEADER
				dr	T. BRUNGARD 10/28/03	INCH/MM	product family PwrBlade code 213
				enrg	M. GRAY 10/28/03	scale	size dwg no 51939-088 sheet 4 of 4
				chr	M. GRAY 10/28/03	1:1	
				oppd	M. GRAY 10/28/03		
sheet index	revision sheet						

cage code 22526