

Excellent Integrated System Limited

Stocking Distributor

Click to view price, real time Inventory, Delivery & Lifecycle Information:

[FCI](#)
[51871-005](#)

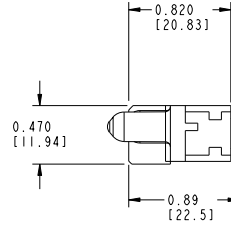
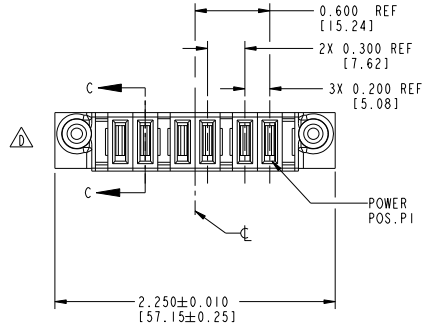
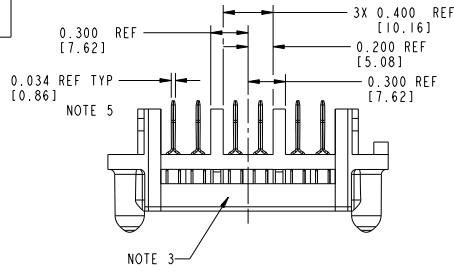
For any questions, you can email us directly:
sales@integrated-circuit.com

Tous droits strictement réservés. Reproduction ou communication de ces lignes interdite
 sous quelque forme que ce soit sans autorisation écrite du propriétaire.
 Propriété de FCI. Droits de reproduction FCI.



All rights strictly reserved. Reproduction or issue in any form without written authority from the proprietor.
 Property of FCI. Copyright FCI.

PRODUCT NUMBER
 51871-005--
 NOTE: ③



CODE	DIM "M" ±0.010 [0.25]	TERMINATION AREA ±0.010 [0.25]	CONTACT TYPE
PG	0.042 [1.07]	0.393 [9.98]	POWER
PH	0.092 [2.34]	0.393 [9.98]	POWER

mat'l code				NOTE 1		tolerances unless otherwise specified		CUSTOMER		FCI	
ltr	ecn no.	dr	date	linear	XX±.01/0.XX±0.3	COPY		www.fciconnect.com		title	
A	V03-0360	MEM	3/27/03		XXX±.005/0.XX±0.13	projection		6P RIGHT ANGLE		CABLE RECEPTACLE	
B	D605-0216	SJ	07/11/05		XXXX±.0020/0.XX±0.050	INCH/MM		product family		PwrBlade	
C	DG08-0251	W D	09/16/08	angles	0°±	scale		size		dwg no	
D	DG09-0116	W D	04/13/09	dr	M. MOSTOLLER 3/27/03	1:1		A		51871-005	
				enr	H. BREWBAKER 3/27/03					213	
				chr	H. BREWBAKER 3/27/03					sheet	
				oppd	M. MOSTOLLER 3/27/03					1 of 2	
sheet index	revision sheet	D 1	D 2								

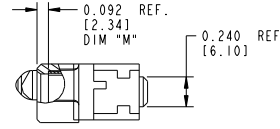
Pro/E

cage code 22526

Tous droits strictement réservés. Reproduction ou communication de ces lignes interdite
 sous quelque forme que ce soit sans autorisation écrite du propriétaire.
 Property of FCI. Droits de reproduction FCI.

All rights strictly reserved. Reproduction or issue in any media without written authority from the proprietor.
 Property of FCI. Copyright FCI.

PRODUCT No.	ROWS	POWER							E1
		E2	P6	P5	P4	P3	P2	P1	
51871-005-- NOTE: ③	D C B A								



PARTIAL SECTION C-C

CONNECTOR NOTES:

- ① HOUSING MATERIAL: UL 94 V-0 GLASS FILLED HIGH TEMP THERMOPLASTIC
POWER CONTACT MATERIAL: COPPER ALLOY
- ② SEE ITEM 5 & 6 IN PRINT 10064183 FOR PLATING SPEC OF 51871-005 AND 51871-005LF RESPECTIVELY.
- ③ *MANUFACTURER'S* NAME, P/N, AND DATE CODE TO APPEAR ON THIS SURFACE
4. PRODUCT SPECIFICATION GS-12-149
5. TERMINATE WITH INDUSTRY STANDARD FEMALE .250 INCH QUICK DISCONNECT TERMINAL CAPABLE OF MATING TO A STANDARD .032 INCH THICK X .250 INCH WIDE MALE TAB TERMINAL.
6. A SYMBOL WILL BE NEXT TO ANY DIMENSION, VIEW, OR NOTE WHICH HAS BEEN MODIFIED WITH THE CURRENT DRAWING REVISION.

mat'l code				NOTE 1		tolerances unless otherwise specified		CUSTOMER	
ltr	ecm no.	dr	date	linear		XX±.01/0	XX±0.3	FCI	
D				linear		XXX±.005/0	XX±0.13	www.fciconnect.com	
				angles		XXX±.0020/0	XX±0.050	6P RIGHT ANGLE CABLE RECEPTACLE	
				dr	M. MOSTOLLER	3/27/03		product family PwrBlade code 213	
				enrg	M. MOSTOLLER	3/27/03		size dwg no 51871-005 sheet 2	
				chr	H. BREWBAKER	3/27/03		scale 1:1	
				oppd	M. MOSTOLLER	3/27/03		cage code 22526	
sheet index	revision sheet								