

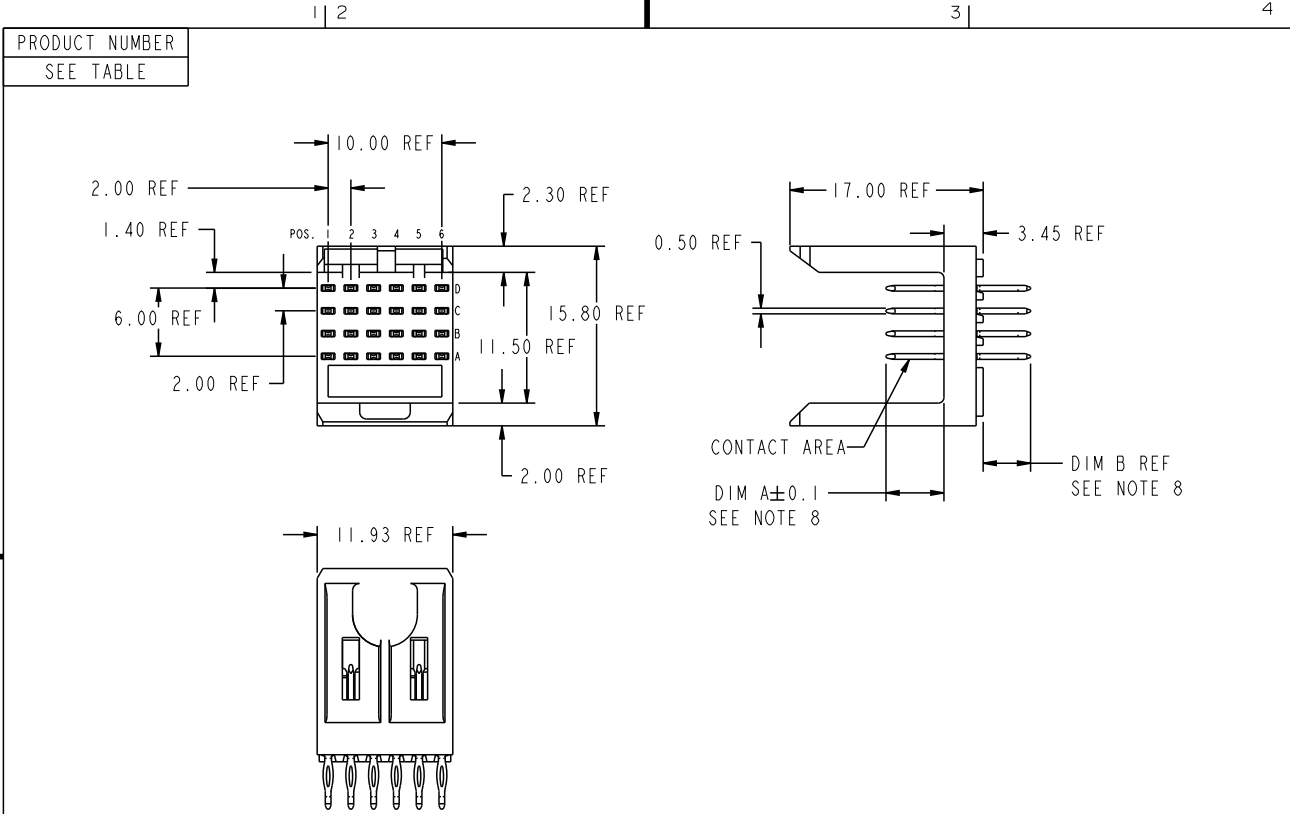
Excellent Integrated System Limited

Stocking Distributor

Click to view price, real time Inventory, Delivery & Lifecycle Information:

[FCI](#)
[88921-128](#)

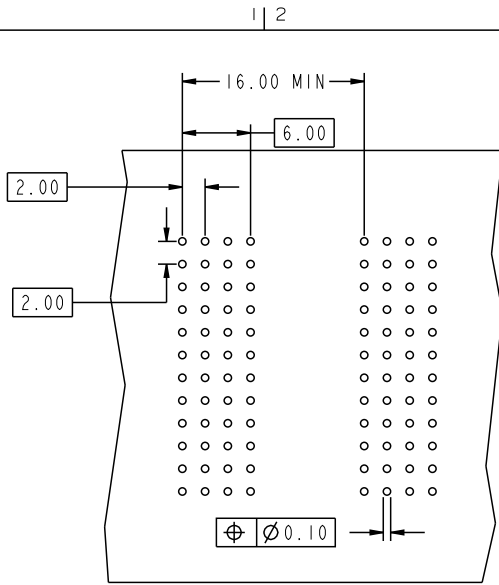
For any questions, you can email us directly:
sales@integrated-circuit.com



mat'l code		--		tolerances unless otherwise specified		CUSTOMER		FCI		www.fciconnect.com	
ltr	ecm no.	dr	date	linear	0.X ±0.3	projection	COPY	title	METRAL SIGNAL HEADER		
AH	V06-0568	DCH	2006-06-13		0.XX ±0.13			I MOD, 4 ROW PRESS-FIT			
AJ	0609-0256	TER	2009-08-19		.XXX ±.051						
				angles	0° ±2°			product family	METRAL	code	213
AD	V03-0025	JWS	02/06/03	dr	T.BRUNGARD	11/19/99	MM	size	dwg no	88921	sheet
AE	V03-1321	DAI	01/15/04	engr	M.STRAWSER	11/19/99	2:1	A			1 of 6
AF	V04-0794	TAB	08/13/04	chr	M.STRAWSER	11/19/99					
AG	V05-0368	DPU	06/01/05	appd	M.STRAWSER	02/29/00					
sheet index	revision sheet	AJ	AJ	AJ	AJ	AJ	AJ				
		1	2	3	4	5	6				

This document is the property of and embodies CONFIDENTIAL and PROPRIETARY information of FCI. No part of the information shown on this document may be used in any way or disclosed without the written consent of FCI. Copyright FCI.

REV C - 2006-04-18



REQUIRED PC BOARD LAYOUT
COMPONENT SIDE

SEE PRINT 58351 FOR
ADDITIONAL PCB INFORMATION

CODE	DIMENSIONS	
	DIM "A" MATE	DIM "B" TAIL
1	5.00	4.30
2	5.75	4.30
3	6.50	4.30
4	7.25	4.30
5	5.00	13.60
6	5.75	13.60
7	6.50	13.60
8	7.25	13.60
9	5.00	17.00
10	5.75	17.00
11	6.50	17.00
12	7.25	17.00
13	8.25	4.30
14	8.25	13.60
15	8.25	17.00
16	7.00	4.30
17	7.00	13.60
18	7.00	17.00
19	8.00	4.30
20	8.00	13.60
21	8.00	17.00
22	5.00	12.10
25	5.75	15.60

CODE	DIMENSIONS	
	DIM "A" MATE	DIM "B" TAIL
40	5.00	15.60
41	6.50	15.60
42	7.25	15.60
43	8.00	15.60
44	5.75	12.10
45	6.50	12.10
59	5.00	11.80
60	5.75	11.80
61	6.50	11.80
62	7.25	11.80
63	8.00	11.80



This document is the property of and embodies CONFIDENTIAL and PROPRIETARY information of FCI. No part of the information shown on this document may be used in any way or disclosed without the written consent of FCI. Copyright FCI.

mat'l code		tolerances unless otherwise specified		CUSTOMER		FCI		www.fciconnect.com	
ltr	ecm no.	dr	date	linear	projection	title		METRAL SIGNAL HEADER	
AJ				0.X ±0.3	MM	I MOD, 4 ROW PRESS-FIT		METRAL	
				0.XX ±0.13	scale	product family	code	213	
				.XXX ±.051	2:1	size	88921	sheet	
				angles	A	dwg no		2	
				0° ±Z°					
				dr					
				eng					
				chr					
				appd					
sheet index	revision sheet								

PRODUCT NUMBER	DESCRIPTION	PLATING IN PRESS FIT TAIL AREA	PERFORMANCE LEVEL OF PLATING IN CONTACT AREA
88921-N1YY	STANDARD	TIN LEAD	TELCORDIA CO (NXT)
88921-N5YY	STANDARD	TIN LEAD	TELCORDIA UE (NXT)
88921-1YY	STANDARD	TIN LEAD	TELCORDIA CO
88921-2YY	STANDARD	TIN LEAD	TELECOM CLASS
88921-3YY	STANDARD	TIN LEAD	IEC CLASS I
88921-5YY	STANDARD	TIN LEAD	TELCORDIA UE
88921-N1YYLF	LEAD FREE	TIN	TELCORDIA CO (NXT), IEC CLASS I, SEE NOTES 9 AND 10
88921-N5YYLF	LEAD FREE	TIN	TELCORDIA UE (NXT) SEE NOTES 9 AND 10
88921-1YYLF	LEAD FREE	TIN	TELCORDIA CO, IEC CLASS I, SEE NOTES 9 AND 10
88921-2YYLF	LEAD FREE	TIN	TELECOM CLASS, SEE NOTES 9 AND 10
88921-5YYLF	LEAD FREE	TIN	TELCORDIA UE, SEE NOTES 9 AND 10

NOTES:

- FOR DIM A, AND B SEE SHEET 2 AND UP.
- BODY MATERIAL: LIQUID CRYSTAL POLYMER 30 % GLASS. FLAME RETARDANT ACC. UL 94-V0.
- PIN MATERIAL PHOSPHOR BRONZE:
- PLATING ON PRESS-FIT AREA :SEE PRODUCT NUMBER TABLE. PLATING ON CONTACT AREA CONFORMS TO PERFORMANCE LEVEL SHOWN IN TABLE ON SHEET3.
- PRODUCT MARKING:
PART NUMBER DESIGNATION & BATCH I.D.
- ALL PRODUCTS WITH PART NUMBERS SHOWN IN SUBSEQUENT TABLES WILL BE PACKAGED IN TUBES. IF TRAY PACKAGING IS REQUIRED, SUFFIX "P" WILL BE ADDED TO THE END OF THE PART NUMBER. EXAMPLE: XXXXX-XXXX OR XXXXX-XXXPLF
- PRODUCT SPECIFICATION: GS-12-180
APPLICATION SPECIFICATION: BUS-20-073
- AFTER INSERTION INTO BOARD WITH QUALIFIED TOOLING, THE PRODUCTS WHERE THE PART NUMBER ENDS IN LF MEET THE EUROPEAN UNION DIRECTIVE AND OTHER COUNTRY REGULATIONS AS DESCRIBED IN GS-12-008.
- ALL THE PRODUCTS EXCEPT THOSE WITH PART NUMBERS CONTAINING 88921-N1---OR 88921-N5---WILL WITHSTAND EXPOSURE TO 260 DEGREES C FOR 60 SECONDS IN A CONVECTION, INFRA-RED OR VAPOR PHASE REFLOW OVEN. PART NUMBERS 88921-N1---AND 88921-N5--- WILL NOT WITHSTAND REFLOW AND THE Au CONTACT SURFACE OF THE CONTACTS SHALL BE EXPOSED TO A MAXIMUM 140 DEGREES C FOR NO LONGER THAN 15 SECONDS IN A WAVE SOLDER APPLICATION.

mat'l code				SEE NOTES		tolerances unless otherwise specified		CUSTOMER		FCI	
ltr	ecm no.	dr	date	linear	0.X ±0.3	projection	COPY		www.fciconnect.com		
AJ				angles	0.XX ±0.13		title		METRAL SIGNAL HEADER		
				dr	.XXX ±.051		product family		METRAL		
				eng	0° ±2°		size		88921		
				chr	T.BRUNGARD 11/19/99	scale	A		213		
				appd	x. xxxxxx mm/dd/yy	sheet		3			
sheet index	revision sheet				M. STRAWSER 11/19/99						
					M. STRAWSER 02/29/00						

This document is the property of and embodies CONFIDENTIAL and PROPRIETARY information of FCI. No part of the information shown on this document may be used in any way or disclosed without the written consent of FCI. Copyright FCI.

1 2						3						4									
METRAL P/N	ROW	CONTACT CODE	MOD.	CONTACT CODE	MOD.	METRAL P/N	ROW	CONTACT CODE	MOD.	CONTACT CODE	MOD.	METRAL P/N	ROW	CONTACT CODE	MOD.	CONTACT CODE	MOD.				
88921-X01 AND 88921-X01LF	D	-	-	-	-	88921-X06 AND 88921-X06LF	D	1	4	6	6	88921-X11 AND 88921-X11LF	D	1	3	16	16	16	16	13	
	C	-	-	-	-		C	1	4	6	6		6	C	1	3	16	16	16	16	13
	B	-	-	-	-		B	1	4	6	6		6	B	1	3	16	16	16	16	13
A	-	-	-	-	A	1	4	6	6	6	A	1	3	16	16	16	16	13			
88921-X02 AND 88921-X02LF	D	-	6	-	6	88921-X07 AND 88921-X07LF	D	1	5	10	10	10	88921-X12 AND 88921-X12LF	D	1	4	17	17	17	17	14
	C	-	6	-	6		C	1	5	10	10	10		C	1	4	17	17	17	14	
	B	-	6	-	6		B	1	5	10	10	10		B	1	4	17	17	17	14	
A	-	6	-	6	A	1	5	10	10	10	A	1	4	17	17	17	14				
88921-X03 AND 88921-X03LF	D	3	3	3	3	88921-X08 AND 88921-X08LF	D	1	6	2	2	2	88921-X13 AND 88921-X13LF	D	1	5	18	18	18	15	
	C	4	4	4	4		C	1	6	2	2	2		C	1	5	18	18	18	15	
	B	4	4	4	4		B	1	6	2	2	2		B	1	5	18	18	18	15	
A	4	4	4	4	A	1	6	2	2	2	A	1	5	18	18	18	15				
88921-X04 AND 88921-X04LF	D	7	7	7	7	88921-X09 AND 88921-X09LF	D	1	7	6	6	6	88921-X14 AND 88921-X14LF	D	2	2	2	2	2	2	
	C	8	8	8	8		C	1	7	6	6	6		C	2	2	2	2	2		
	B	8	8	8	8		B	1	7	6	6	6		B	2	1	2	3	2		
A	8	8	8	8	A	1	7	6	6	6	A	2	2	2	3	2					
88921-X05 AND 88921-X05LF	D	1	3	2	2	88921-X10 AND 88921-X10LF	D	1	8	10	10	10	88921-X15 AND 88921-X15LF	D	4	4	4	4	2		
	C	1	3	2	2		C	1	8	10	10	10		C	3	3	3	3	3		
	B	1	3	2	2		B	1	8	10	10	10		B	3	3	3	3	3		
A	1	3	2	2	A	1	8	10	10	10	A	3	3	3	3	3					
88921-X16 AND 88921-X16LF	D	1	3	13	13	88921-X17 AND 88921-X17LF	D	2	5	25	25	25	88921-X18 AND 88921-X18LF	D	3	1	1	1	1		
	C	1	3	13	13		C	2	5	25	25	25		C	3	1	1	1	1		
	B	1	3	13	13		B	2	5	25	25	25		B	3	1	1	1	1		
A	1	3	13	13	A	2	5	25	25	25	A	3	1	1	1	1					
88921-X21 AND 88921-X21LF	D	4	4	4	19	88921-X22 AND 88921-X22LF	D	8	8	8	20	88921-X19 AND 88921-X19LF	D	2	2	2	2	2			
	C	4	4	4	19		C	8	8	8	20		C	4	2	4	2	4			
	B	4	4	4	19		B	8	8	8	20		B	4	2	4	2	4			
A	4	4	4	19	A	8	8	8	20	A	4	2	4	2	4						
88921-X23 AND 88921-X23LF	D	4	1	1	1	88921-X24 AND 88921-X24LF	D	2	2	2	2	88921-X20 AND 88921-X20LF	D	1	9	3	3	3			
	C	4	1	1	1		C	2	2	2	2		C	1	9	3	3	3			
	B	4	1	1	1		B	2	2	2	2		B	1	9	3	3	3			
A	4	1	1	1	A	2	2	2	2	A	1	9	3	3	3						
88921-X25 AND 88921-X25LF	D	2	2	2	2	88921-X25 AND 88921-X25LF	D	3	3	3	3	88921-X25 AND 88921-X25LF	D	3	3	3	3				
	C	3	3	3	3		C	3	3	3	3		C	3	3	3	3				
	B	3	3	3	3		B	3	3	3	3		B	3	3	3	3				
A	3	3	3	3	A	3	3	3	3	A	3	3	3	3							

FCI

This document is the property of and embodies CONFIDENTIAL and PROPRIETARY information of FCI. No part of the information shown on this document may be used in any way or disclosed outside the written consent of FCI. Copyright FCI.

mat'l code		--		tolerances unless otherwise specified		CUSTOMER		FCI		www.fciconnect.com	
ltr	ecr no.	dr	date	linear	0.X ±0.3	COPY		projection		title	
AJ					0.XX ±0.13			⊕		METRAL SIGNAL HEADER	
				angles	.XXX ±.051			MM		I MOD, 4 ROW PRESS-FIT	
				dr	0° ±2°			product family		METRAL	
				eng	T.BRUNGARD 11/19/99			size		code	
				chr	M.STRAWER 11/19/99			A		213	
				appd	M.STRAWER 02/29/00			88921		sheet	
sheet index	revision sheet									4	

1 2						3						4																	
METRAL P/N	ROW	CONTACT CODE	MOD.	CONTACT CODE	MOD.	METRAL P/N	ROW	CONTACT CODE	MOD.	CONTACT CODE	MOD.	METRAL P/N	ROW	CONTACT CODE	MOD.														
88921-X26 AND 88921-X26LF	D	19	-	4	-	88921-X31 AND 88921-X31LF	D	3	3	3	3	88921-X36 AND 88921-X36LF	D	4	-	4	-	88921-X41 AND 88921-X41LF	D	62	-	62	-	88921-X46 AND 88921-X46LF	D	8	-	8	-
	C	19	-	4	-		C	3	3	3	3		C	4	-	4	-		C	62	-	62	-		C	8	-	8	-
	B	19	-	4	-		B	3	3	3	3		B	4	-	4	-		B	62	-	62	-		B	8	-	8	-
A	19	-	4	-	A	3	3	3	19	A	4	-	4	-	A	62	-	62	-	A	8	-	8	-					
88921-X27 AND 88921-X27LF	D	2	2	2	3	88921-X32 AND 88921-X32LF	D	6	6	6	6	88921-X37 AND 88921-X37LF	D	19	-	19	-	88921-X42 AND 88921-X42LF	D	63	-	63	-	88921-X47 AND 88921-X47LF	D	20	-	20	-
	C	2	2	2	3		C	6	6	6	6		C	19	-	19	-		C	63	-	63	-		C	20	-	20	-
	B	2	2	2	3		B	6	6	6	6		B	19	-	19	-		B	63	-	63	-		B	20	-	20	-
A	2	2	2	3	A	6	6	6	6	A	19	-	19	-	A	63	-	63	-	A	20	-	20	-					
88921-X28 AND 88921-X28LF	D	2	2	2	2	88921-X33 AND 88921-X33LF	D	3	3	3	3	88921-X38 AND 88921-X38LF	D	59	-	59	-	88921-X43 AND 88921-X43LF	D	5	-	5	-	88921-X48 AND 88921-X48LF	D	40	-	40	-
	C	2	2	2	2		C	3	3	3	3		C	59	-	59	-		C	5	-	5	-		C	40	-	40	-
	B	2	2	2	2		B	3	3	3	3		B	59	-	59	-		B	5	-	5	-		B	40	-	40	-
A	2	2	2	2	A	19	19	19	19	A	59	-	59	-	A	5	-	5	-	A	40	-	40	-					
88921-X29 AND 88921-X29LF	D	3	3	3	3	88921-X34 AND 88921-X34LF	D	6	6	6	6	88921-X39 AND 88921-X39LF	D	60	-	60	-	88921-X44 AND 88921-X44LF	D	6	-	6	-	88921-X49 AND 88921-X49LF	D	25	-	25	-
	C	3	3	3	3		C	6	6	6	6		C	60	-	60	-		C	6	-	6	-		C	25	-	25	-
	B	3	3	3	3		B	6	6	6	6		B	60	-	60	-		B	6	-	6	-		B	25	-	25	-
A	3	3	3	19	A	7	7	7	6	A	60	-	60	-	A	6	-	6	-	A	25	-	25	-					
88921-X30 AND 88921-X30LF	D	3	3	3	19	88921-X35 AND 88921-X35LF	D	3	-	3	-	88921-X40 AND 88921-X40LF	D	61	-	61	-	88921-X45 AND 88921-X45LF	D	7	-	7	-	88921-X50 AND 88921-X50LF	D	41	-	41	-
	C	3	3	3	3		C	3	-	3	-		C	61	-	61	-		C	7	-	7	-		C	41	-	41	-
	B	3	3	3	3		B	3	-	3	-		B	61	-	61	-		B	7	-	7	-		B	41	-	41	-
A	3	3	3	3	A	3	-	3	-	A	61	-	61	-	A	7	-	7	-	A	41	-	41	-					

FCI
This document is the property of and embodies CONFIDENTIAL and PROPRIETARY information of FCI. No part of the information shown on this document may be used in any way or disclosed outside of the written consent of FCI. Copyright FCI.

mat'l code		--		tolerances unless otherwise specified		CUSTOMER		FCI		www.fciconnect.com	
ltr	ecr no.	dr	date	linear	0.X ±0.3	COPY		title		METRAL SIGNAL HEADER	
AJ					0.XX ±0.13	projection		I MOD, 4 ROW PRESS-FIT		product family	
				angles	.XXX ±.051	MM		size		METRAL	
				dr	0° ±2°	scale		A		code	
				eng	T.BRUNGARD 11/19/99	1:1		88921		213	
				chr	M.STRAWER 11/19/99					sheet	
				appd	M.STRAWER 02/29/00					5	
sheet index	revision sheet										

METRAL P/N		CONTACT CODE MOD. I					
ROW		1	2	3	4	5	6
D	88921-X51 AND 88921-X51LF	- 42	- 42	- 42	- 42	-	-
C		42	- 42	- 42	-	-	-
B		- 42	- 42	- 42	-	-	-
A		42	- 42	- 42	-	-	-

METRAL P/N		CONTACT CODE MOD. I					
ROW		1	2	3	4	5	6
D	88921-X56 AND 88921-X56LF	- 12	- 12	- 12	- 12	-	-
C		12	- 12	- 12	- 12	-	-
B		- 12	- 12	- 12	- 12	-	-
A		12	- 12	- 12	- 12	-	-

METRAL P/N		CONTACT CODE MOD. I					
ROW		1	2	3	4	5	6
D	88921-X61 AND 88921-X61LF	7	6	6	5	6	6
C		7	6	5	5	7	6
B		7	6	6	6	6	6
A		7	6	6	6	6	6

METRAL P/N		CONTACT CODE MOD. I					
ROW		1	2	3	4	5	6
D	88921-X52 AND 88921-X52LF	- 43	- 43	- 43	- 43	-	-
C		43	- 43	- 43	- 43	-	-
B		- 43	- 43	- 43	- 43	-	-
A		43	- 43	- 43	- 43	-	-

METRAL P/N		CONTACT CODE MOD. I					
ROW		1	2	3	4	5	6
D	88921-X57 AND 88921-X57LF	- 21	- 21	- 21	- 21	-	-
C		21	- 21	- 21	- 21	-	-
B		- 21	- 21	- 21	- 21	-	-
A		21	- 21	- 21	- 21	-	-

METRAL P/N		CONTACT CODE MOD. I					
ROW		1	2	3	4	5	6
D	88921-X53 AND 88921-X53LF	- 9	- 9	- 9	- 9	-	-
C		9	- 9	- 9	- 9	-	-
B		- 9	- 9	- 9	- 9	-	-
A		9	- 9	- 9	- 9	-	-

METRAL P/N		CONTACT CODE MOD. I					
ROW		1	2	3	4	5	6
D	88921-X54 AND 88921-X54LF	- 10	- 10	- 10	- 10	-	-
C		10	- 10	- 10	- 10	-	-
B		- 10	- 10	- 10	- 10	-	-
A		10	- 10	- 10	- 10	-	-

METRAL P/N		CONTACT CODE MOD. I					
ROW		1	2	3	4	5	6
D	88921-X55 AND 88921-X55LF	- 11	- 11	- 11	- 11	-	-
C		11	- 11	- 11	- 11	-	-
B		- 11	- 11	- 11	- 11	-	-
A		11	- 11	- 11	- 11	-	-

METRAL P/N		CONTACT CODE MOD. I					
ROW		1	2	3	4	5	6
D	88921-X59 AND 88921-X59LF	1	1	2	1	1	1
C		1	1	2	1	1	1
B		1	1	2	1	1	1
A		1	1	2	1	1	1

METRAL P/N		CONTACT CODE MOD. I					
ROW		1	2	3	4	5	6
D	88921-X58 AND 88921-X58LF	20	6	7	7	7	7
C		20	7	7	7	7	7
B		20	7	7	7	7	7
A		20	7	5	7	7	7

METRAL P/N		CONTACT CODE MOD. I					
ROW		1	2	3	4	5	6
D	88921-X60 AND 88921-X60LF	2	2	2	3	2	3
C		2	2	2	3	2	3
B		2	2	2	3	2	3
A		2	2	2	3	2	3

METRAL P/N		CONTACT CODE MOD. I					
ROW		1	2	3	4	5	6
D	88921-X62 AND 88921-X62LF	19	- 4	- 3	19	-	-
C		19	- 4	- 3	19	-	-
B		- 19	- 4	- 3	19	-	-
A		- 19	- 4	- 3	19	-	-

FCI
This document is the property of and embodies CONFIDENTIAL and PROPRIETARY information of FCI. No part of the information shown on this document may be used in any way or disclosed outside the written consent of FCI. Copyright FCI.

mat'l code		tolerances unless otherwise specified		CUSTOMER		FCI	
ltr	ecm no.	dr	date	COPY		www.fciconnect.com	
AJ				linear	0.X ±0.3	title METRAL SIGNAL HEADER	
				angles	0.XX ±0.13	I MOD, 4 ROW PRESS-FIT	
				dr	.XXX ±.051	product family METRAL	
				eng	0° ±2°	code 213	
				chr	T.BRUNGARD 11/19/99	size 88921	
				appd	M.STRAWSER 11/19/99	sheet 6	
					M.STRAWSER 02/29/00	scale A	
sheet index	revision sheet						