

Excellent Integrated System Limited

Stocking Distributor

Click to view price, real time Inventory, Delivery & Lifecycle Information:

[FCI](#)

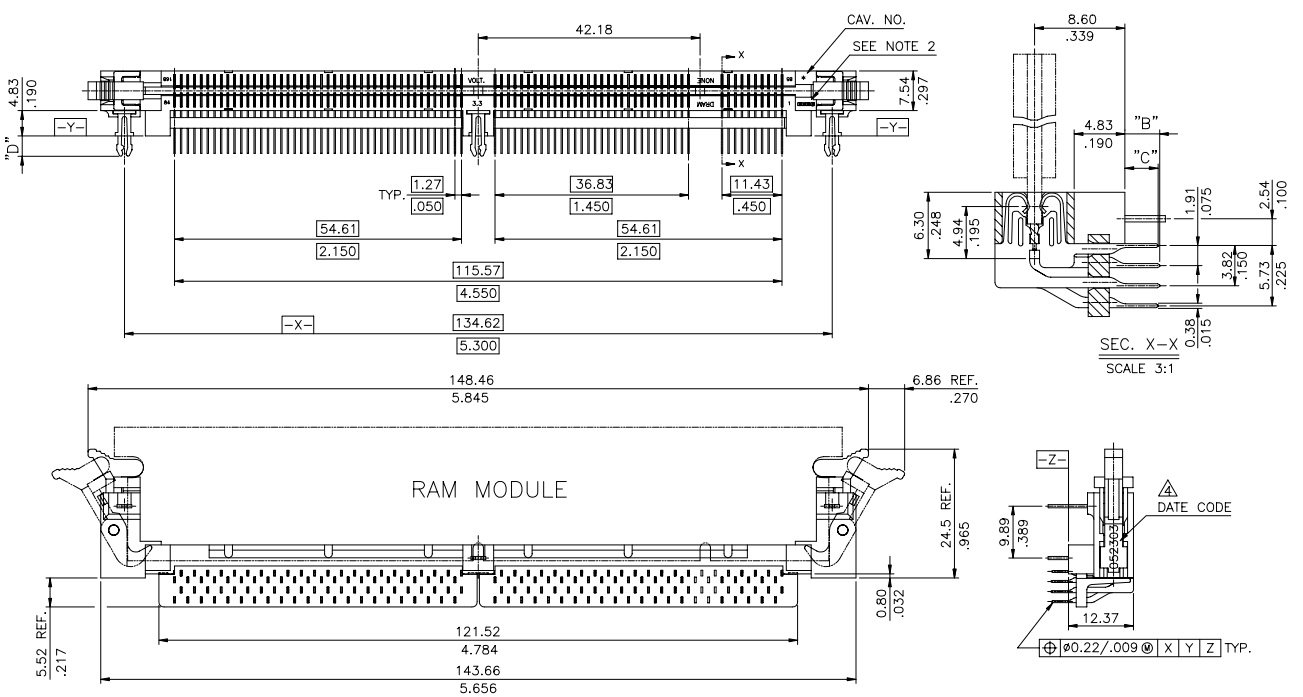
[52490-61102](#)

For any questions, you can email us directly:

sales@integrated-circuit.com

Tous droits strictement réservés. Reproduction ou communication a des tiers interdite sous quelque forme que ce soit sans autorisation écrite du propriétaire. Propriété de c FCI. Droits de reproduction FCI.

All rights strictly reserved. Reproduction or issue to third parties in any form whatever is not permitted without written authority from the proprietor. Property of FCI. Copyright FCI.



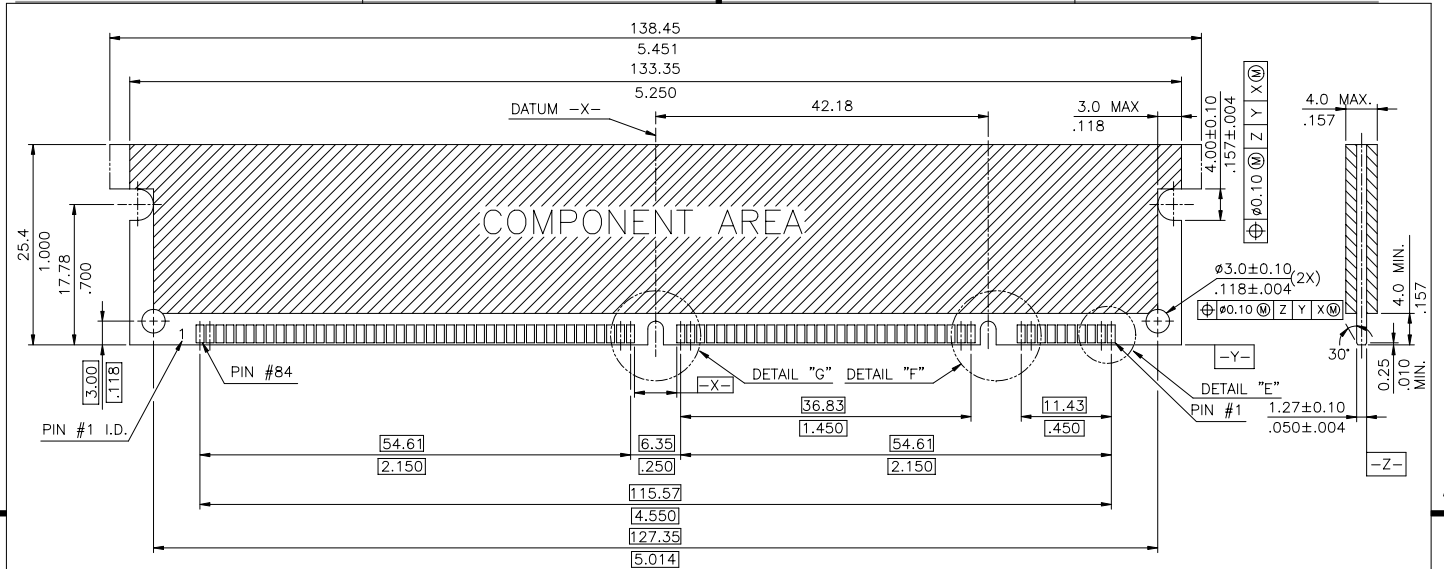
NOTE:
 1. MATERIAL:
 HOUSING: LIQUID CRYSTAL POLYMER OR OTHER HIGH PERFORMANCE RESINS, GLASS FILLED UL94V-0 RATED, COLOR BLACK.
 EJECTOR: LIQUID CRYSTAL POLYMER OR OTHER HIGH PERFORMANCE RESINS, GLASS FILLED UL94V-0 RATED, COLOR NATURAL.
 TAIL GUIDE: LIQUID CRYSTAL POLYMER OR OTHER HIGH PERFORMANCE RESINS, GLASS FILLED UL94V-0 RATED, COLOR BLACK.
 TERMINAL: PHOSPHOR BRONZE.
 METAL CLIP: PHOSPHOR BRONZE.
 2. BERG LOGO TO BE APPROXIMATELY LOCATED AS SHOWN ON PRINT.
 3. PRODUCT SPECIFICATION: GS-12-066.
 THE DATE CODE IS SHOWN "MM-DD-YY".

mat'l. code		tolerances unless otherwise specified		CUSTOMER COPY	 www.fciconnect.com
ltr	ecn no	dr	date	linear	
A	T00053	M W	03/08/00	linear	.XX ±0.25/.010
B	T03-0194	M W	05/23/03		.XXX ±0.13/.005
C	T04-0078	M W	02/23/04	angles	0° ±2'
D	T04-0119	M W	03/11/04	dr	MAGGIE WU 03/08/00
E	T04-0145	M W	04/08/04	enrg	GARY TANG 03/08/00
				chr	GARY TANG 03/08/00
				oppd	JENN TSAO 03/08/00
sheet index	revision sheet	E	B	B	E
		1	2	3	4

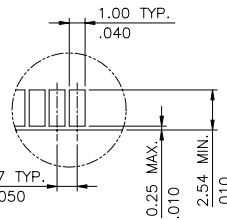
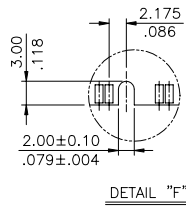
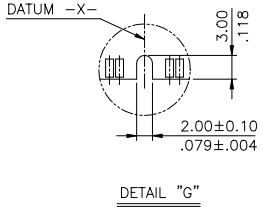
projection	title	product family		code
	DIMM, .050" 1-ROW, 168P R/A ASSY METAL CLIP	DIMM		-
scale	size	dwg no	sheet	
1:1	A4	52490	1 of 4	

Tous droits strictement réservés. Reproduction ou communication à des tiers interdite sous quelque forme que ce soit sans autorisation écrite du propriétaire. Propriété de c FCI. Droits de reproduction FCI.

All rights strictly reserved. Reproduction or issue to third parties in any form whatever is not permitted without written authority from the proprietor. Property of FCI. Copyright FCI.



RECOMMENDED MODULE LAYOUT



CONFIDENTIAL

mat'l. code		tolerances unless otherwise specified		CUSTOMER COPY		FCI		www.fciconnect.com	
ltr	ecr no	dr	date	.X	±0.38/.015	projection	title	DIMM, .050" 1-ROW, 168P R/A ASSY METAL CLIP	
B				.XX	±0.25/.010			DIMM	
				.XXX	±0.13/.005			product family	code
				angles	0° ± 2'	MM	size	dwg no	sheet
				dr	MAGGIE WU 03/08/00	scale	1.5:1	A4	2 of
				enrg	GARY TANG 03/08/00			52490	
				chr	GARY TANG 03/08/00				
				oppd	JENN TSAO 03/08/00				
sheet index	revision sheet								

1 | 2

ACAD

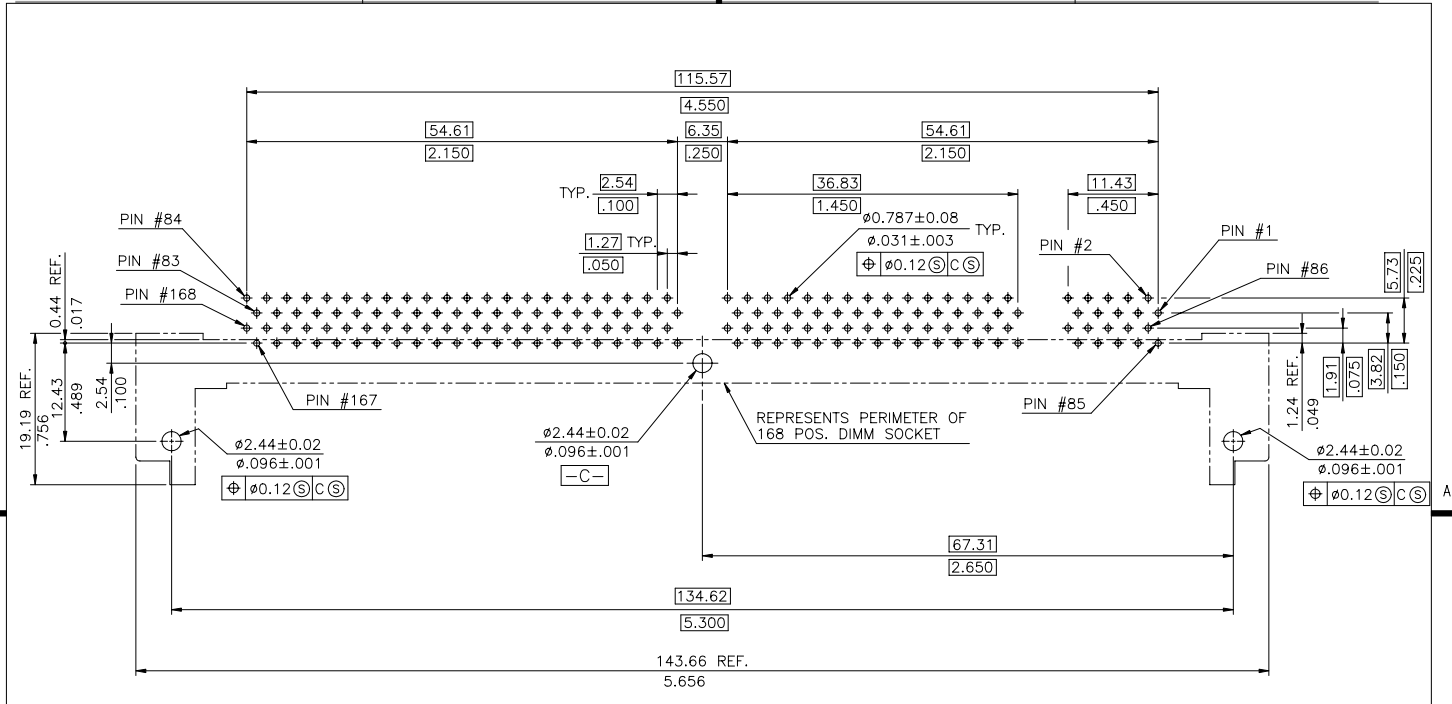
PDM: Rev:E

STATUS: **Released**

cage code 28526
Printed: May 30, 2008

3 | 4

Tous droits strictement réservés. Reproduction ou communication à des tiers interdite sous quelque forme que ce soit sans autorisation écrite du propriétaire. Propriété de c FCI. Droits de reproduction FCI.
 All rights strictly reserved. Reproduction or issue to third parties in any form whatever is not permitted without written authority from the proprietor. Property of FCI. Copyright FCI.



RECOMMENDED CIRCUIT BOARD HOLE LAYOUT

CONFIDENTIAL

mat'l. code				tolerances unless otherwise specified		CUSTOMER COPY		 www.fciconnect.com	
ltr	ecr no	dr	date	linear	.X ±0.38/.015	projection		title	
B					.XX ±0.25/.010			DIMM, .050" 1-ROW, 168P R/A ASS'Y METAL CLIP	
				angles	.XXX ±0.13/.005			product family	code
				dr	0° ±2'			DIMM	-
				engr		scale	← MM →	size	sheet
				chr	MAGGIE WU 03/08/00	1.5:1	A4	dwg no	3 of
				oppd	GARY TANG 03/08/00			52490	
sheet index	revision sheet				JENN TSAO 03/08/00				

Tous droits strictement réservés. Reproduction ou communication a des tiers interdite sous quelque forme que ce soit sans autorisation écrite du propriétaire. Propriété de c FCI. Droits de reproduction FCI.

All rights strictly reserved. Reproduction or issue to third parties in any form whatever is not permitted without written authority from the proprietor. Property of FCI. Copyright FCI.

52490 - □ □ □ □ □

STYLE

6 : FOR UNBUFFERED DRAM, SYNC DRAM, REGISTERED SDRAM, 3.3 VOLT.

PEG TYPE

1 : WITH METAL CLIP + DIM."D" = 3.85 ± 0.25

TAIL LENGTH

CODE	DIM. "B"±0.25	DIM. "C"±0.25
1	3.30	3.15

PLATING


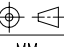
CODE	CONTACT	SOLDERTAIL	UNDERPLATE
2	15μ"(0.38μm) MIN. GOLD	100μ"(2.54μm) MIN. TIN/LEAD	50μ" (1.27μm) MIN. NICKEL OVERALL
2F	15μ"(0.38μm) MIN. GOLD	100μ"(2.54μm) MIN. 100% TIN	

COLOR OF HOUSING AND EJECTOR

0 : BLACK HOUSING + IVORY EJECTOR + BLACK TAIL GUIDE

PROD. NO.	DIM."B"	DIM."C"	DIM."D"	HSG COLOR	EJECTOR COLOR	TAIL GUIDE COLOR	STYLE
52490-61102	3.30	3.15	3.85	BLACK	IVORY	BLACK	FOR UNBUFFERED DRAM, SYNC DRAM, REGISTERED SDRAM, 3.3 VOLT.

CONFIDENTIAL

mat'l. code		tolerances unless otherwise specified		CUSTOMER COPY		 www.fciconnect.com	
ltr	ecr no	dr	date	linear	.X ±0.38/.015	projection	title DIMM, .050" 1-ROW, 168P R/A ASS'Y METAL CLIP
E					.XX ±0.25/.010		
				angles	.XXX ±0.13/.005		
				dr	0° ±2°	← MM →	size dwg no
				enrg	MAGGIE WU 03/08/00	scale	code
				chr	GARY TANG 03/08/00	1:1	52490
				oppd	JENN TSAO 03/08/00	A4	sheet
sheet index	revision sheet						4 of