

## Excellent Integrated System Limited

Stocking Distributor

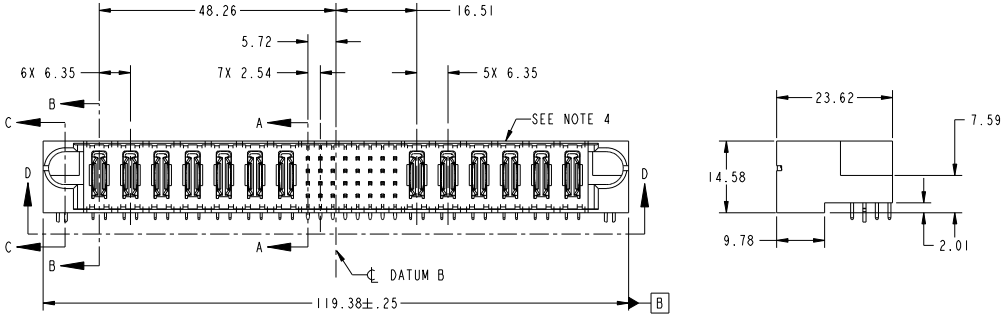
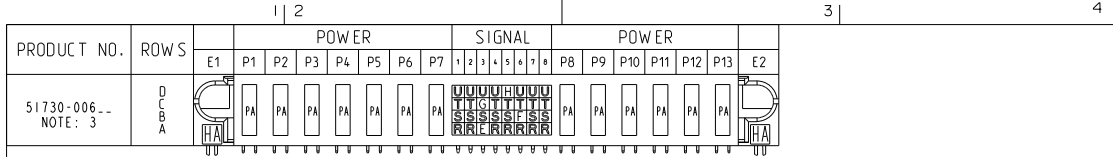
Click to view price, real time Inventory, Delivery & Lifecycle Information:

[FCI](#)  
[51730-006](#)

For any questions, you can email us directly:  
[sales@integrated-circuit.com](mailto:sales@integrated-circuit.com)

Tous droits strictement réservés. Reproduction ou communication de ces lieux interdite sous quelque forme que ce soit sans autorisation écrite du propriétaire. Propriété de FCI. Droits de reproduction FCI.

All rights strictly reserved. Reproduction or issue to third parties in any form whatever is not permitted without written authority from the proprietor. Property of FCI. Copyright FCI.



CODE	DIM "M" MATING LENGTH	CONTACT TYPE
PA	[ N / A ]	POWER
HA	[ N / A ]	HOLD-DOWN
U	[ 6.86 ]	SIGNAL
T	[ 6.86 ]	SIGNAL
S	[ 6.86 ]	SIGNAL
R	[ 6.86 ]	SIGNAL
E	[ 5.59 ]	SIGNAL
F	[ 5.59 ]	SIGNAL
G	[ 5.59 ]	SIGNAL
H	[ 5.59 ]	SIGNAL

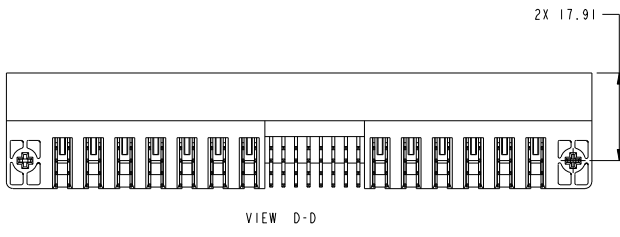
mat'l code				SEE NOTE		tolerances unless otherwise specified		CUSTOMER	
ltr	ecm no.	dr	date	linear	0.X ±0.5	projection	COPY	www.fciconnect.com	
A	V02906	JWS	12-05-00		0.XX ±0.25	MM	title	7P + 32S + 6P	
B	V20009	JWS	01-14-02		0.XXX ±0.10	MM	RIGHT ANGLE SOLDER HEADER	product family PwrBlade code 213	
C	D605-0182	SJ	06/22/05	angles	0° ±2°	MM	size	dwg no	sheet
D	D605-0415	SudJM	10/25/05	dr	J. SHAFER 01-14-02	MM	A	51730-006	1 of 4
E	D608-0273	JW	12/26/08	chr	M. MOSTOLLER 01-14-02	MM	scale	1:1	
		opd		opd	M. MOSTOLLER 01-14-02				
sheet index	revision	sheet		E	E	E			
				1	2	3			

Pro/E 3 cage code 22526 4

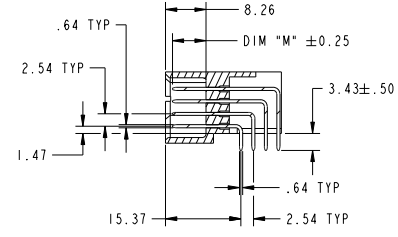
Tous droits strictement réservés. Reproduction ou communication à des tiers interdite sous quelque forme que ce soit sans autorisation écrite du propriétaire. Propriété de FCI. Droits de reproduction FCI.

All rights strictly reserved. Reproduction or issue to third parties in any form whatever is not permitted without written authority from the proprietor. Property of FCI. Copyright FCI.

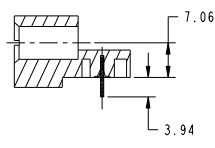
PRODUCT NUMBER  
51730-006...  
NOTE: 3



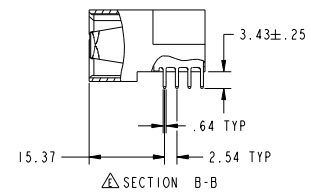
VIEW D-D



SECTION A-A



SECTION C-C



SECTION B-B

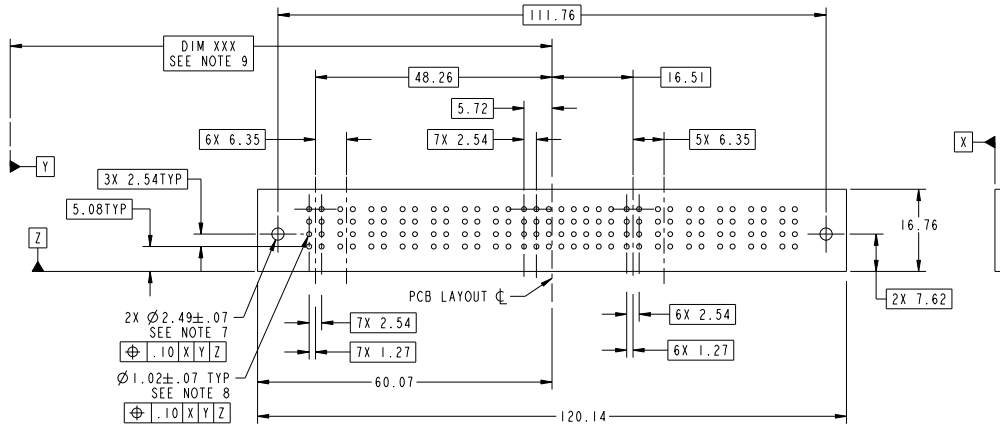
mat'l code		SEE NOTE		tolerances unless otherwise specified		CUSTOMER		FCI	
ltr	ecm no.	dr	date	linear	0.X ±0.5	COPY	www.fciconnect.com		
E					0.XX ±0.25	projection	title	7P + 32S + 6P	
					0.XXX ±0.10	MM	RIGHT ANGLE SOLDER HEADER		
				angles	0° ±2°	scale	product family	PwrBlade	code
				dr	J. SHAFER 01-14-02	1:1	size	51730-006	213
				engr	M. MOSTOLLER 01-14-02		dwg no		sheet
				chr	M. MOSTOLLER 01-14-02				2
				oppd	M. MOSTOLLER 01-14-02				
sheet index	revision sheet							cage code	22526

Tous droits strictement réservés. Reproduction ou communication à des tiers interdite sous quelque forme que ce soit sans autorisation écrite du propriétaire. Propriété de FCI. Droits de reproduction FCI.

All rights strictly reserved. Reproduction or issue to third parties in any form whatever is not permitted without written authority from the proprietor. Property of FCI. Copyright FCI.



PRODUCT NUMBER  
51730-006...  
NOTE: 3



RECOMMENDED PCB LAYOUT

mat'l code		SEE NOTE		tolerances unless otherwise specified		CUSTOMER		FCI	
ltr	ecm no.	dr	date	linear	0.X ±0.5	COPY	www.fciconnect.com		
E					0.XX ±0.25	projection		title	
				angles	0.XXX ±0.10			7P + 32S + 6P	
				dr	0° ±2°	MM		RIGHT ANGLE SOLDER HEADER	
				engr	J. SHAFER 01-14-02	product family	PwrBlade	code	213
				chr	M. MOSTOLLER 01-14-02	size	dwg no	sheet	3
				oppd	M. MOSTOLLER 01-14-02	scale	51730-006		
sheet index	revision sheet					1:1	A		

Pro/E

cage code 22526

Tous droits strictement réservés. Reproduction ou communication à des tiers interdite sous quelque forme que ce soit sans autorisation écrite du propriétaire. Propriété de FCI. Droits de reproduction FCI.

All rights strictly reserved. Reproduction or issue to third parties in any form whatever is not permitted without written authority from the proprietor. Property of FCI. Copyright FCI.

**PRODUCT NUMBER**  
51730-006  
NOTE: 3

**NOTES:**

1. DIMENSIONS AND TOLERANCES ARE IN ACCORDANCE WITH ASME Y14.5M, 1994 UNLESS OTHERWISE SPECIFIED.
- CONNECTORS NOTES:  
2. HOUSING MATERIAL: UL 94 V-0 GLASS FILLED HIGH TEMP THERMO PLASTIC  
POWER CONTACT MATERIAL: COPPER ALLOY  
○ SIGNAL PIN MATERIAL: COPPER ALLOY
3. PLATING:  
△ SEE ITEM 1 & 2 IN PRINT 10064183 FOR PLATING SPEC OF 51730-006; 51730-006LF PRESPECTIVELY
4. "MANUFACTURER" NAME, P/N, AND DATE CODE TO APPEAR ON THIS SURFACE.
5. PRODUCT SPECIFICATION GS-12-149.
- PCB - NOTES:  
6. ALL HOLE DIAMETERS ARE FINISHED HOLE SIZE.
7. HOLD DOWN THROUGH HOLES ARE UNPLATED.
8.  $\varnothing 1.151 \pm 0.025$  DRILLED HOLES PLATED WITH 0.008 MIN SnPb OVER 0.03 TO 0.08 Cu PLATING TO ACHIEVE  $\varnothing 1.02 \pm .07$  HOLE.
9. "DIM XXX" TO BE DETERMINED BY THE CUSTOMER.
12. A △ SYMBOL WILL BE NEXT TO ANY DIMENSION, VIEW, OR NOTE WHICH HAS BEEN MODIFIED WITH THE CURRENT DRAWING REVISION.

mat'l code		SEE NOTE		tolerances unless otherwise specified		CUSTOMER	
ltr	ecm no.	dr	date	linear	0.X ± 0.5	COPY	
E				linear	0.XX ± 0.25	projection	title
				angles	0° ± 2°		7P + 32S + 6P RIGHT ANGLE SOLDER HEADER
		dr	J. SHAFER	01-14-02			product family
		engr	M. MOSTOLLER	01-14-02		size	PwrBlade
		chr	M. MOSTOLLER	01-14-02		dwg no	code
		appd	M. MOSTOLLER	01-14-02		51730-006	213
sheet index	revision sheet				scale	A	sheet
					1:1		4

Pro/E

cage code 22526