

Excellent Integrated System Limited

Stocking Distributor

Click to view price, real time Inventory, Delivery & Lifecycle Information:

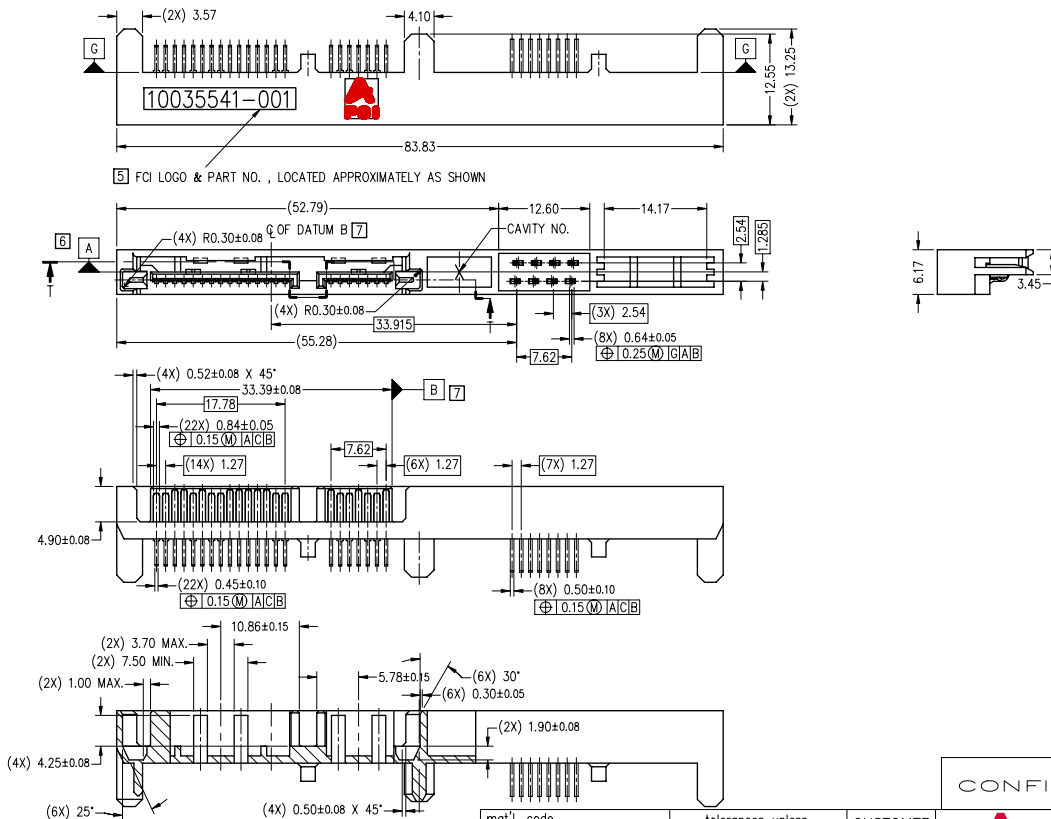
[FCI](#)
[10035541-001LF](#)

For any questions, you can email us directly:
sales@integrated-circuit.com

Tous droits strictement réservés. Reproduction ou communication à des tiers
 interdite sous quelque forme que ce soit sans autorisation écrite du propriétaire.
 Property of FCI. Droits de reproduction FCI.



All rights strictly reserved. Reproduction or issue to third parties in any
 form whatsoever is not permitted without written authority from the proprietor.
 Property of FCI. Copyright FCI.



CONFIDENTIAL

mat'l. code				tolerances unless otherwise specified		CUSTOMER COPY		FCI	
ltr	ecn no	dr	date	linear	.XX ±.25	projection	title	www.fciconnect.com	
A	S04-0028	SLLIM	020304	angles	±3°		SATA STRADDLE, LATCHING (1.97mm OFF-SET)	product family	SATA PLUG
B	S04-0056	SLLIM	300304					size	dwg no
C	S04-0118	SLLIM	070604			MM			
D	S04-0168	SLLIM	020804	dr	SLLIM	281003	scale	2:1	
E	S04-0213	SLLIM	291104	enrg	SLLIM	281003			
F	S05-0266	SLLIM	190905	chr	SLLM	291003			
G	S05-0341	SLLIM	241105	appd	JOEY NG	291003			
sheet index	revision sheet	G 1	G 2	G 3	G 4	G 5			

SECTION "T-T"

ACAD

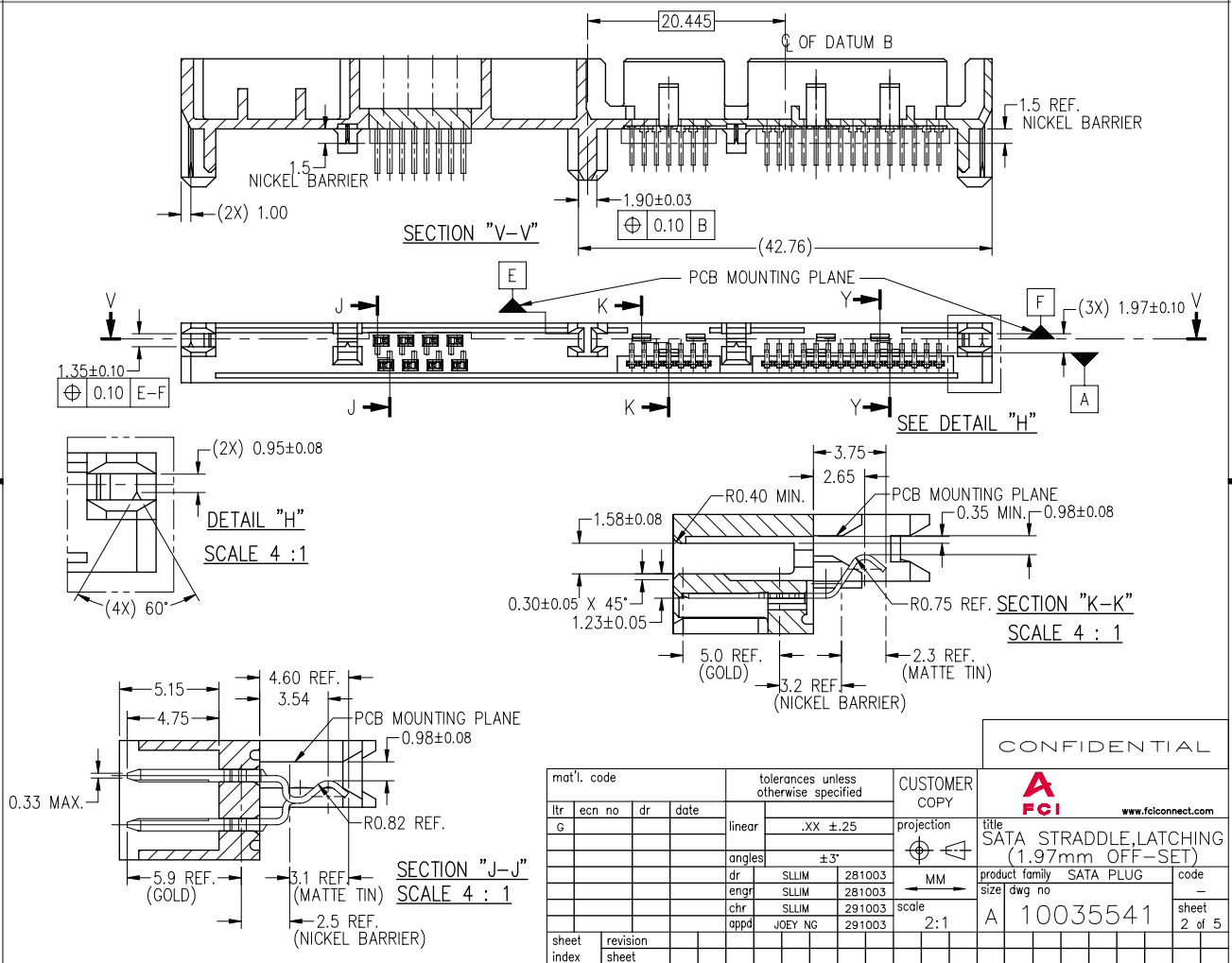
PDM: Rev:G

STATUS: Released Printed: Feb 10, 2007

code 22526

Tous droits strictement réservés. Reproduction ou communication à des tiers interdite sous quelque forme que ce soit sans autorisation écrite du propriétaire. Property of FCI. Droits de reproduction FCI.

All rights strictly reserved. Reproduction or issue to third parties in any form whatsoever is not permitted without written authority from the proprietor. Property of FCI. Copyright FCI.



CONFIDENTIAL

mat'l. code		tolerances unless otherwise specified		CUSTOMER COPY	title	
ltr	ecn no	dr	date	projection	SATA STRADDLE, LATCHING (1.97mm OFF-SET)	
g					www.fciconnect.com	
		linear .XX ±.25		MM	product family SATA PLUG	
		angles ±3°			size	
dr	SLIM	281003		scale 2:1	code -	
enr	SLIM	281003			dwg no	
chr	SLIM	291003		A 10035541		
appd	JOEY NG	291003		sheet 2 of 5		
sheet index	revision sheet			cage code 29526		

ACAD

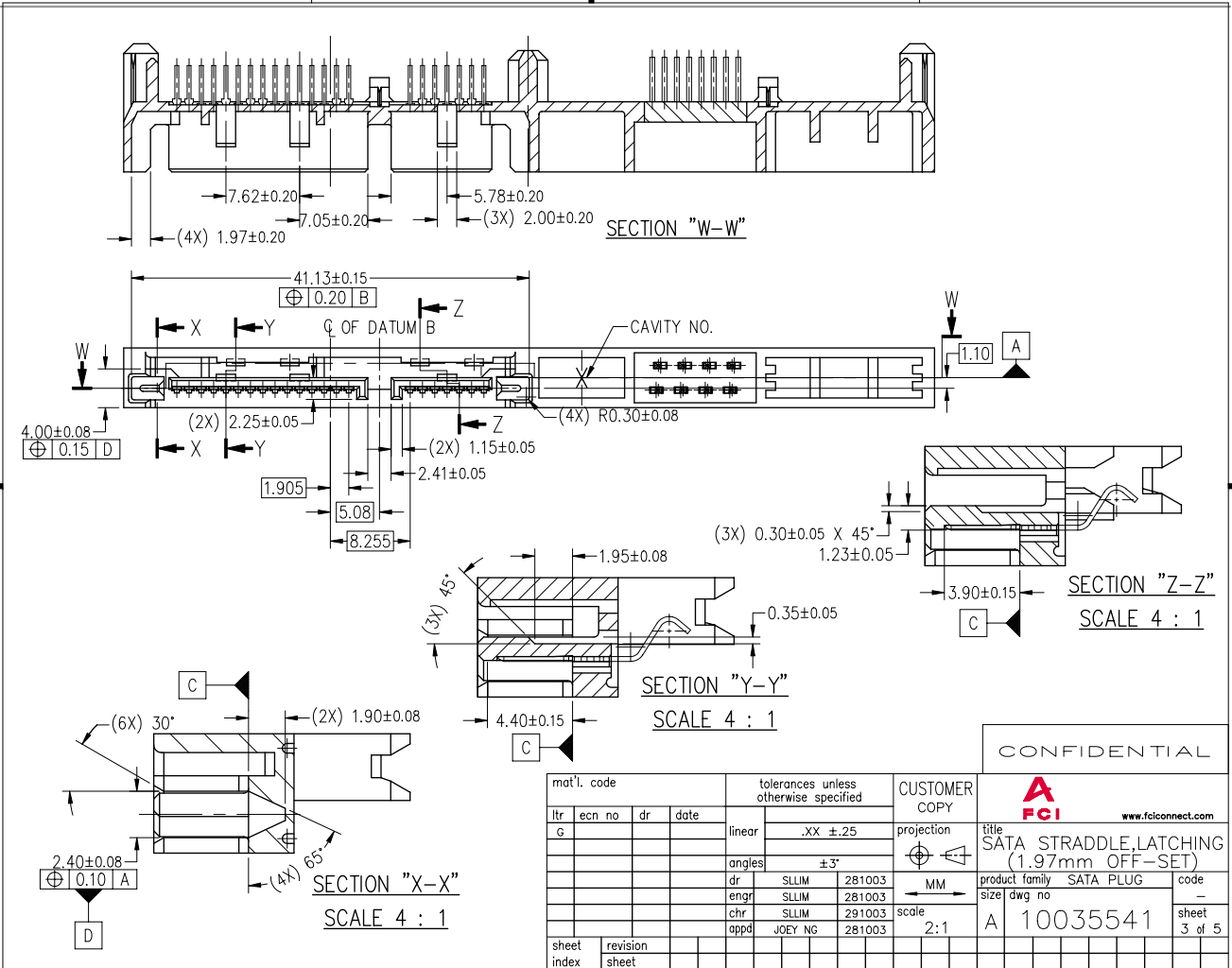
PDM: Rev:G

STATUS: Released Printed: Feb 10 2007

Tous droits strictement réservés. Reproduction ou communication à des tiers
 interdite sans que l'on ait obtenu l'autorisation écrite du propriétaire.
 Property of FCI. Droits de reproduction FCI.



All rights strictly reserved. Reproduction or issue to third parties in any
 form whatsoever is not permitted without written authority from the proprietor.
 Property of FCI. Copyright FCI.



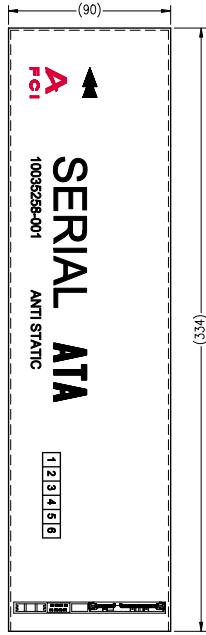
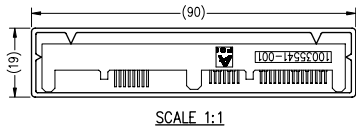
mat'l. code		tolerances unless otherwise specified		CUSTOMER COPY	
ltr	ecn no	dr	date	linear	.XX ±.25
g				angles	±3°
				dr	SLLIM 281003
				enr	SLLIM 281003
				chr	SLLIM 291003
				appd	JOEY NG 281003
sheet index	revision sheet			projection	MM
				scale	2:1

CONFIDENTIAL			
		www.fciconnect.com	
title SATA STRADDLE, LATCHING (1.97mm OFF-SET)			
product family SATA PLUG		code -	
size dwg no		sheet 3 of 5	
A		10035541	

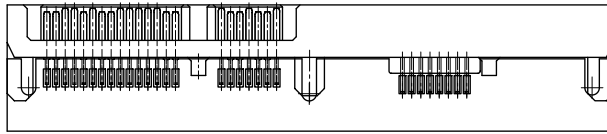
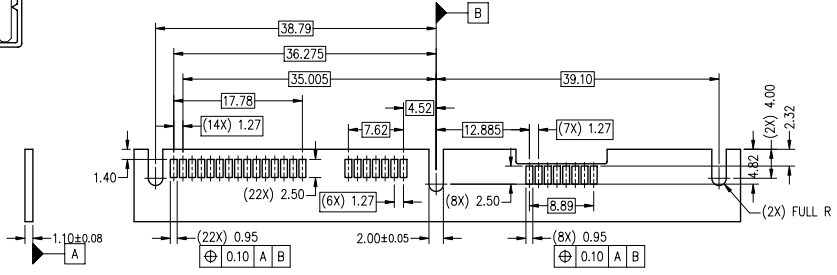
Tous droits strictement réservés. Reproduction ou communication à des tiers interdite sans que l'auteur ait écrit ou autorisé par écrit son accord. Propriété de FCI. Droits de reproduction FCI.



All rights strictly reserved. Reproduction or issue to third parties in any form without the prior written authority from the proprietor. Property of FCI. Copyright FCI.



NOTES:
 CONNECTOR ORIENTATION IN PACKAGING
 50 PIECES PER CARTRIDGE TUBE
 MATERIAL THICKNESS 1.20±0.15mm.
 GENERAL TOLERANCE ±0.25mm
 (STOPPER NOT SHOWN)



RECOMMENDED PCB LAYOUT

CONFIDENTIAL

mat'l. code		tolerances unless otherwise specified		CUSTOMER COPY		FCI www.fciconnect.com	
ltr	ecn no	dr	date	linear	.XX ±.25	projection	title
G				angles	±3'		SATA STRADDLE,LATCHING (1.97mm OFF-SET)
				dr	SLLIM 281003		product family
				enrg	SLLIM 281003	←	SATA PLUG
				chr	SLLIM 291003	→	size
				appd	JOEY NG 291003	scale	dwg no
sheet index	revision sheet					2:1	A 10035541
							code
							20526
							sheet
							4 of 5

ACAD

PDM: Rev:G

STATUS: Released

Printed: Feb 10 2007

Tous droits strictement réservés. Reproduction ou communication à des tiers
 interdite sous quelque forme que ce soit sans autorisation écrite du propriétaire.
 Property of FCI. Droits de reproduction FCI.



All rights strictly reserved. Reproduction or issue to third parties in any
 form whatever is not permitted without written authority from the proprietor.
 Property of FCI. Copyright FCI.

NOTES :

1. MATERIALS:
 - A. HOUSING:
HIGH TEMPERATURE THERMOPLASTIC MATERIAL, UL 94V-0,
COLOR: BLACK. MAXIMUM REGRIND MATERIAL IS NOT TO
EXCEED 25% MOLD FLASH SHALL NOT COVER ANY PORTION
OF THE MATING CONTACT SURFACE AND SHALL NOT EXCEED
0.15 mm (.006") MAXIMUM AT NON-CRITICAL OR FUNCTION AREAS.
 - B. CONTACT PIN: COPPER ALLOY (BRASS).
2. FINISH:
 - A. SATA SIGNAL & POWER PINS: (MATING SIDE)
1.27um [50u"] MINIMUM, 2.54um [100u"] MAXIMUM NICKEL UNDER
PLATE WITH 0.127um [5u"] MINIMUM GOLD IN CONTACT AREA.
 - B. 0.64mm JUMPER PINS (MATING SIDE)
1.27um [50u"] MINIMUM, 2.54um [100u"] MAXIMUM
NICKEL UNDER PLATE WITH 0.127um [5u"] MINIMUM
GOLD IN CONTACT AREA.
 - C. ALL SOLDER TAILS:
1.91um [75u"] MINIMUM LEAD-FREE (100%) TIN,
PLATING COVERAGE: 95% MINIMUM FOR UNDER
AND OVERPLATE.
3. SOLDER TAIL REQUIREMENTS:
ENTIRE DATA PIN IS TO BE PLATED. EXPOSED BASE METAL AT END
OF SOLDER TAIL (DUE TO FABRICATION PROCESS) IS ACCEPTABLE.
IF SOLDER FABRICATION REQUIRES A SHEARING PROCESS. A SHEAR
DIRECTION OF BOTTOM TO TOP OF SOLDER TAIL IS PREFERRED TO
ALLOW FOR PLATING WIPE AT THE END OF TAIL.
4. WARPAGE REQUIREMENTS: (BOW AND TWIST)
MAXIMUM WARPAGE 0.13 mm (.005") OVER THE LENGTH OF THE
CONNECTOR, BEFORE AND AFTER EXPOSURE TO 225°C FOR 1 MINUTE,
235°C FOR 15 SECONDS AND 260°C OF 10 SECONDS.
IN ADDITION:
PIN RETENTION FORCE: 1.32LBS (0.6kg) MINIMUM PER PIN.
5. PART MARKING: MANUFACTURE NAME AND / OR LOGO SHALL BE MARKED ON
THE SURFACE OF THE CONNECTOR APPROXIMATELY WHERE SHOWN. HEIGHT OF
CHARACTERS TO BE MAXIMUM POSSIBLE. MARKING MUST WITHSTAND CLEANING
IN ISOPROPYL ALCOHOL, SAPONIFIER AND 75° WATER FOR A 4 MINUTE DURATION.
READING DIRECTION AS INDICATED.
6. IS DEFINED AS THE TOP PORTION OF THE NOTED BLADE SURFACE.
7. IS DEFINED AS THE CENTERLINE OF THE $\overline{33.915}$ DIMENSION.
8. TYPICAL WALL THICKNESS (1.0 mm).
9. ALTERNATE CORING AND RIB CONSTRUCTION FOR MOLDING PROCESS.
10. PACKAGING - 50 CONNECTOR PER CARTRIDGE TUBE.
11. THIS PRODUCT MEETS EUROPEAN UNION DIRECTIVES AND OTHER COUNTRY
REGULATIONS AS DESCRIBED IN GS-22-008.
12. THE HOUSING WILL WITHSTAND EXPOSURE TO 260°C TEMPERATURE FOR
10 SECONDS IN A CONVECTION, INFRA-RED OR VAPOR PHASE REFLOW OVEN.

CONFIDENTIAL

mat'l. code		tolerances unless otherwise specified		CUSTOMER COPY		FCI www.fciconnect.com	
ltr	ecn no	dr	date	linear	.XX ±.25	projection	title
G				angles	±3°		SATA STRADDLE,LATCHING (1.97mm OFF-SET)
				dr	SLLIM 281003	MM	product family SATA PLUG
				enrg	SLLIM 281003	←	size
				chr	SLLIM 291003	→	dwg no
				appd	JOEY NG 291003	scale	A 10035541
						2:1	code
sheet index	revision sheet						22526
							4