

Excellent Integrated System Limited

Stocking Distributor

Click to view price, real time Inventory, Delivery & Lifecycle Information:

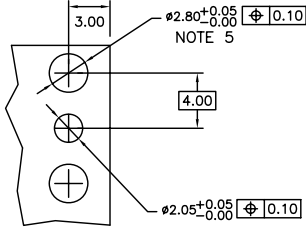
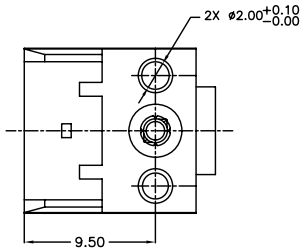
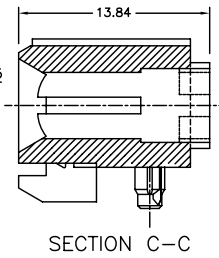
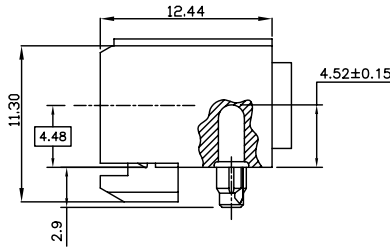
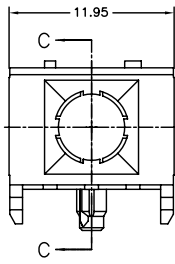
[FCI](#)
[10022089-101](#)

For any questions, you can email us directly:
sales@integrated-circuit.com



FCIconnect.com

PRODUCT NO.
10022089-101
10022089-101LF



RECOMMENDED PC BOARD LAYOUT (COMPONENT SIDE)

NOTES:

- MATERIAL: LIQUID CRYSTAL POLYMER 30% GLASS FLAME RETARDANT ACC. UL 94-V0 COLOR NATURAL.
- HOUSING TO BE MOUNTED TO THE PCB USING NO.3 DIAMETER SELF-TAPPING SCREWS.
- HOUSING IS TO BE USED WITH WALL-LESS HEADER HOUSING, P/N 63735-101, TO AVOID INTERFERENCE W/ MOUNTING SCREWS.
- PRODUCT MAY NOT BE STACKABLE DEPENDING UPON THE HEAD SIZE OF THE MOUNTING SCREW USED.
- FOR LEAD FREE NUMBERS, ADD AN 'LF' SUFFIX. PART NUMBERS THAT DO NOT END IN 'LF' ARE LEAD FREE. EXAMPLE: 10022089-101LF
- THE PRODUCTS WHERE THE PART NUMBER ENDS IN LF AND THE NONE LF PART NUMBERS MEET THE EUROPEAN UNION DIRECTIVES AND OTHER COUNTRY REGULATIONS AS DESCRIBED IN GS-22-008.
- ALL PRODUCTS WILL WITHSTAND EXPOSURE TO 260°C FOR 60 SECONDS IN A CONVECTION, INFRA-RED OR VAPOUR PHASE REFLOW OVEN.

mat'l code	SEE NOTES	surface	tolerance	projection	product family
ecr no	date	ASME Y14.5	ASME Y14.5	MM	METRAL (tm)
A V04-0030	HTB 01/13/04	angles	tolerances unless otherwise specified	scale 1:1	title
B V06-0077	JRV 3/14/06	dr	XXXB	FCI	R/A FEMALE HSG.
C V06-0748	JRV 2006-08-07	engr	XXX051	sheet 1 of 1	HYBRID 12mm PRESS PEG
		appd		size	A4
				type	CUSTOMER Drawing
sheet index	revision sheet	c	1		