

## Excellent Integrated System Limited

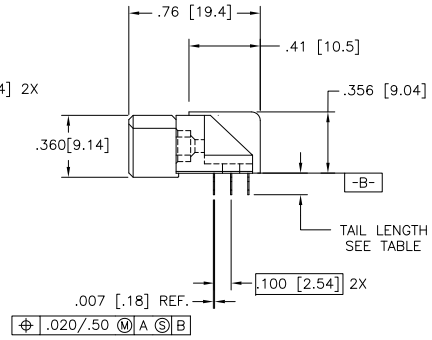
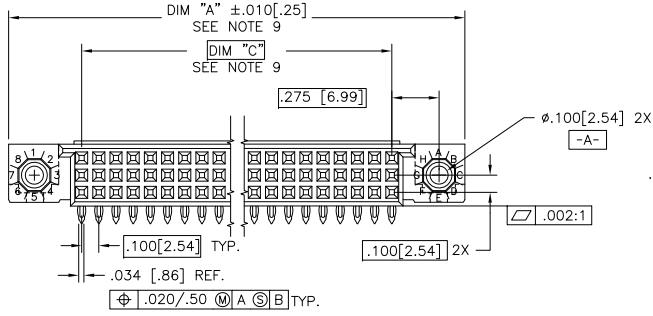
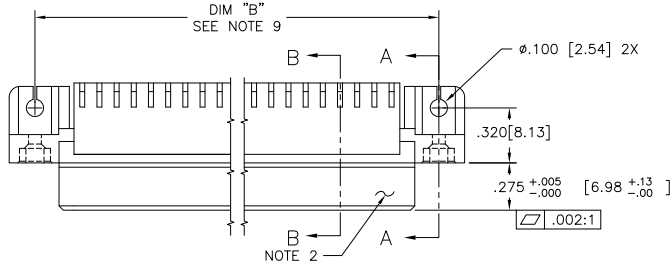
Stocking Distributor

Click to view price, real time Inventory, Delivery & Lifecycle Information:

[FCI](#)  
[50645-1240EB](#)

For any questions, you can email us directly:  
[sales@integrated-circuit.com](mailto:sales@integrated-circuit.com)

PRODUCT NUMBER  
SEE TABLE



|             |            |                                       |          |           |                 |            |                          |
|-------------|------------|---------------------------------------|----------|-----------|-----------------|------------|--------------------------|
| mat'l. code | SEE NOTE 4 | surface                               | ISO 1302 | tolerance | ISO 406         | projection | product family           |
| ISO 1101    |            | tolerances unless otherwise specified |          | ISO 1101  |                 |            | HPC                      |
| ltr         | ec'n no    | dr                                    | date     | angles    | linear          | INCH/MM    | title                    |
| T           | ELX-24450  | MJA                                   | 07/06/16 |           | .XX±.01/.3      |            | 3 ROW R/A RECEPT.        |
| -           | -          | -                                     | -        |           | .xxx±.005/.13   |            | PRESS FIT, 0 GUIDE PIN   |
| M           | V10826     | JRW                                   | 2/7/01   | 0°±2'     | .xxxx±.0020/.05 | scale 1:1  | dwg no                   |
| N           | V05-0511   | DAI                                   | 8/15/05  | dr        | G.PETERS        | 6/19/93    | sheet 1 of 4 size        |
| P           | V05-1054   | HTB                                   | 11/17/05 | engr      | S.CLARK         | 6/19/93    | A3                       |
| R           | M06-0255   | MHT                                   | 7/06/06  | chr       | M JACOB         | 07/06/16   | 50645                    |
| S           | M07-0099   | AGS                                   | 2/06/07  | appd      | BIJU K PAUL     | 07/06/16   | Type                     |
| sheet       | revision   | T                                     | S        | S         | S               |            | Product Customer Drawing |
| index       | sheet      | 1                                     | 2        | 3         | 4               |            |                          |

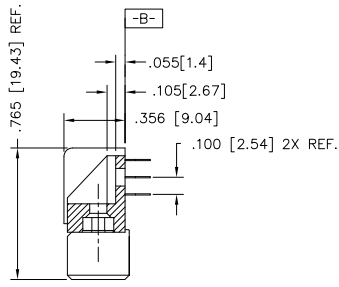
PDS: Rev :T

STATUS:Released

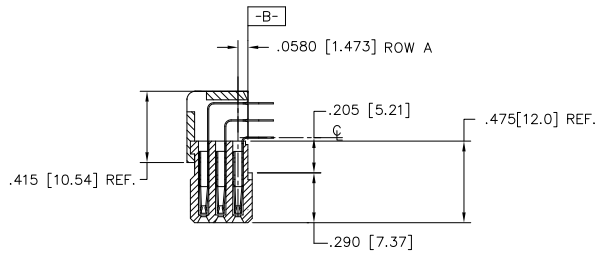
Printed: Jul 06, 2016

FCI  
FCIconnect.com  
Copyright FCI

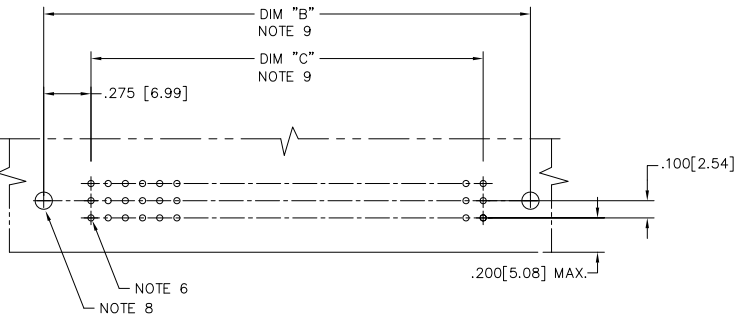
PRODUCT NUMBER  
SEE TABLE



SECTION A-A



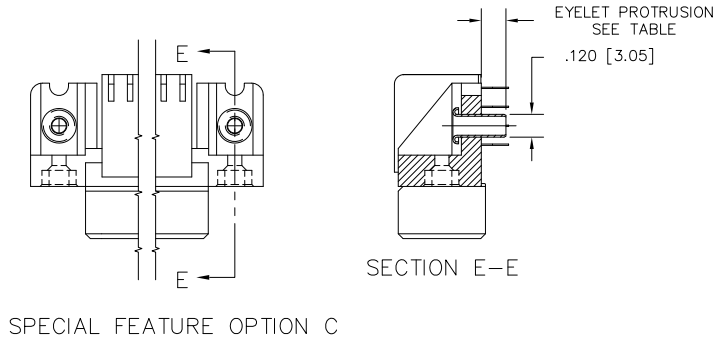
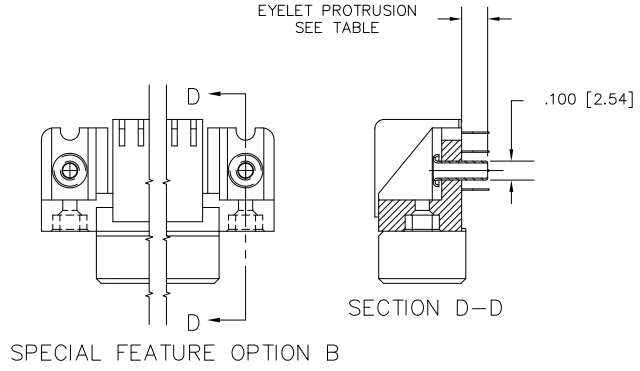
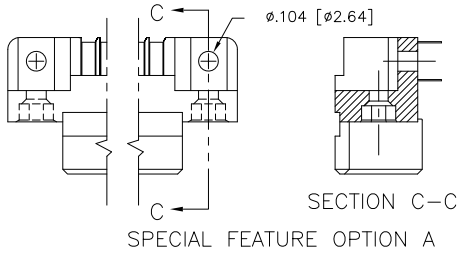
SECTION B-B



RECOMMENDED PCB LAYOUT  
(ALL HOLES LOCATED ON .100 [2.54] GRID  
UNLESS OTHERWISE SHOWN.)

|             |          |          |          |                                       |                 |            |  |   |  |
|-------------|----------|----------|----------|---------------------------------------|-----------------|------------|--|---|--|
| mat'l. code |          | surface  |          | tolerance                             |                 | projection |  | product family                              |  |
| SEE NOTE 4  |          | ISO 1302 |          | ISO 406                               |                 | INCH/MM    |  | HPC   |  |
| ltr         | ec'n no  | dr       | date     | tolerances unless otherwise specified |                 | INCH/MM    |  | title                                       |  |
| S           |          |          |          | angles                                | linear          | scale 1:1  |  | 3 ROW R/A RECEPT.<br>PRESS FIT, 0 GUIDE PIN |  |
|             |          |          |          | 0°±2'                                 | .XX±.01/.3      |            |  | dwg no                                      |  |
|             |          |          |          |                                       | .XXX±.005/.13   |            |  | sheet 2 of 4 size                           |  |
|             |          |          |          |                                       | .XXXX±.0020/.05 |            |  | A3  |  |
|             |          | dr       | G.PETERS | 6/19/93                               |                 |            |  | FCI   |  |
|             |          | engr     | S.CLARK  | 6/19/93                               |                 |            |  | 50645                                       |  |
|             |          | chr      | S.CLARK  | 6/19/93                               |                 |            |  | Type  |  |
|             |          | appd     | S.CLARK  | 6/19/93                               |                 |            |  | Product Customer Drawing                    |  |
| sheet       | revision |          |          |                                       |                 |            |  |   |  |
| index       | sheet    |          |          |                                       |                 |            |  |   |  |

PRODUCT NUMBER  
SEE TABLE



|             |                |           |            |   |
|-------------|----------------|-----------|------------|---|
| mat'l. code | surface        | tolerance | projection | product family                              |
| SEE NOTE 4  | ISO 1302       | ISO 406   |            | HPC   |
| lfr         | ecn no         | dr        | date       | tolerances unless otherwise specified       |
| S           |                |           |            | linear .XX±.01/.3                           |
|             |                |           |            | angles .xxx±.005/.13                        |
|             |                |           |            | 0°±2'                                       |
|             |                |           |            | .xxxx±.0020/.051                            |
| dr          | G.PETERS       | 6/19/93   | INCH/MM    | scale 1:1                                   |
| enfr        | S.CLARK        | 6/19/93   |            | title                                       |
| chr         | S.CLARK        | 6/19/93   |            | 3 ROW R/A RECEPT.<br>PRESS FIT, 0 GUIDE PIN |
| appd        | S.CLARK        | 6/19/93   |            | dwg no 50645 sheet 3 of 4 size A3           |
| sheet index | revision sheet |           |            | Type Product Customer Drawing               |

| PRODUCT NUMBER<br>NOTE 1 | NUMBER OF POSITIONS<br>NOTE 3 | TAIL LENGTH<br>±.010/0.25 | SPECIAL FEATURES<br>SEE NOTE 8 | SOLDER TAIL<br>PLATING | CONTACT PLATING | EYELET<br>PROTRUSION |
|--------------------------|-------------------------------|---------------------------|--------------------------------|------------------------|-----------------|----------------------|
| 50645-1YYYE              | YYY                           | .125/3.18                 | NONE                           | TIN-LEAD               | 30u"/.76u Au    | N/A                  |
| 50645-1YYYELF            | YYY                           | .125/3.18                 | NONE                           | TIN                    | 30u"/.76u GXT   | N/A                  |
| 50645-1YYYEA             | YYY                           | .125/3.18                 | "A"                            | TIN-LEAD               | 30u"/.76u Au    | N/A                  |
| 50645-1YYYEALF           | YYY                           | .125/3.18                 | "A"                            | TIN                    | 30u"/.76u GXT   | N/A                  |
| 50645-1YYYEB             | YYY                           | .125/3.18                 | "B"                            | TIN-LEAD               | 30u"/.76u Au    | .137/3.48            |
| 50645-1YYYEBLF           | YYY                           | .125/3.18                 | "B"                            | TIN                    | 30u"/.76u GXT   | .137/3.48            |
| 50645-1YYYEC             | YYY                           | .125/3.18                 | "C"                            | TIN-LEAD               | 30u"/.76u Au    | .115/2.92            |
| 50645-1YYYECLF           | YYY                           | .125/3.18                 | "C"                            | TIN                    | 30u"/.76u GXT   | .115/2.92            |
| 50645-1YYYF              | YYY                           | .145/3.68                 | NONE                           | TIN-LEAD               | 30u"/.76u Au    | N/A                  |
| 50645-1YYYFLF            | YYY                           | .145/3.68                 | NONE                           | TIN                    | 30u"/.76u GXT   | N/A                  |
| 50645-1YYYFA             | YYY                           | .145/3.68                 | "A"                            | TIN-LEAD               | 30u"/.76u Au    | N/A                  |
| 50645-1YYYFALF           | YYY                           | .145/3.68                 | "A"                            | TIN                    | 30u"/.76u GXT   | N/A                  |
| 50645-1YYYFC             | YYY                           | .145/3.68                 | "C"                            | TIN-LEAD               | 30u"/.76u Au    | .170/4.32            |
| 50645-1YYYFCLF           | YYY                           | .145/3.68                 | "C"                            | TIN                    | 30u"/.76u GXT   | .170/4.32            |

NOTES:

- ① PRODUCT NUMBERING CODE  
 50645- X YYY Z S LF  
 LEAD FREE (OPTIONAL)  
 SPECIAL FEATURES (NOTE 8)  
 TAIL LENGTH (SEE TABLE)  
 NO. OF POSITIONS (SEE NOTE 3)  
 PLATING (SEE TABLE)  
 BASE NUMBER

- PRODUCT NUMBERING CODE FOR SELECT LOAD  
 50645- XX YYY LF  
 LEAD FREE (OPTIONAL)  
 SEQUENCE NUMBER  
 ALWAYS "XX"  
 BASE NUMBER

- ② MANUFACTURE'S LOGO, PART NUMBER, AND LOT CODE TO APPEAR ON THIS SURFACE.  
 ③ THIS PRODUCT IS CONFIGURED IN SIZES OF 6 THRU 80 COLUMNS IN INCREMENTS OF ONE, I.E. 6, 7, 8, 9, .....79, 80.  
 ④ MATERIAL: PRESS BLOCK - HIGH TEMP THERMOPLASTIC HOUSING: GLASS AND MINERAL FILLED HIGH TEMPERATURE THERMOPLASTIC, FLAME RETARDANT PER UL94V-0. COLOR-BLACK CONTACT: BeCu  
 ⑤ PLATING:  
 CONTACT AREA: 30u"/0.76 μm Au OR 30u"/0.76μm GXT (FOR LEAD-FREE OPTION)  
 TAILS: EITHER TIN OR TIN LEAD, SEE TABLE.  
 ⑥ DRILLED HOLE DIA OF .0453±.0010 [1.151±0.025] FINISHED TO .0400±.0030 [1.016±0.076] BY PLATING SnPb OR OTHER PLATING .0003 [0.008] TO .0006 [0.015] THICK WITH A COPPER UNDERPLATE AS NEEDED.  
 ⑦ INFORMATION DOCUMENT: FOR PCB STAY-AWAY ZONE, SEE TA-0954.

- ⑧ SPECIAL FEATURES:  
 - = IF NO SPECIAL FEATURE CODE IS SELECTED, CONNECTOR WILL APPEAR AS SHOWN. PCB MOUNTING HOLE DIMENSION TO BE  $\phi.120\pm.003$  [3.05±0.07]  
 "A" = IF SPECIFIED, CONNECTOR WILL APPEAR AS SHOWN ON SHEET 3. PCB MOUNTING HOLE DIMENSION TO BE  $\phi.100\pm.003$  [2.54±0.07].  
 "B" = IF SPECIFIED, CONNECTOR WILL HAVE PRE-INSTALLED EYELET FOR P.C.B. ATTACHMENT IN A  $\phi.100\pm.003$  [2.54±0.07] MOUNTING HOLE. SEE SHEET 3. (AVAILABLE IN "E" TAIL LENGTH, ONLY).  
 "C" = IF SPECIFIED, CONNECTOR WILL HAVE PRE-INSTALLED EYELET FOR P.C.B. ATTACHMENT IN A  $\phi.120\pm.003$  [3.05±0.07] MOUNTING HOLE. SEE SHEET 3.  
 ⑨ DIMENSION "A" CALCULATION =  $.100 (2.54) \times \text{NO. OF COLUMNS} + .75 (19.1)$   
 DIMENSION "B" CALCULATION =  $.100 (2.54) \times \text{NO. OF COLUMNS} + .450 (11.43)$   
 DIMENSION "C" CALCULATION =  $.100 (2.54) \times \text{NO. OF COLUMNS} - .100 (2.54)$   
 ⑩ ALL POSITIONS ARE LOADED EXCEPT FOR -XXXX ASSEMBLIES WHICH HAVE SELECTIVE LOADING.  
 ⑪ THIS PRODUCT (WITH "LF" SUFFIX) MEETS EUROPEAN UNION DIRECTIVES AND OTHER COUNTRY REGULATIONS AS DESCRIBED IN GS-22-008.  
 ⑫ THIS HOUSING WILL WITHSTAND EXPOSURE TO 260°C PEAK TEMPERATURE FOR 10-30 SECONDS IN A CONVECTION, INFRA-RED OR VAPOR PHASE REFLOW OVEN.

|             |                                       |           |                  |                |
|-------------|---------------------------------------|-----------|------------------|----------------|
| mat'l. code | surface                               | tolerance | projection       | product family |
| SEE NOTE 4  | ISO 1302                              | ISO 406   |                  | HPC            |
| ISO 1101    | tolerances unless otherwise specified | ISO 1101  |                  | title          |
| lfr         | ecr                                   | no        | dr               | date           |
| S           |                                       |           |                  |                |
|             | angles                                | linear    | .XX±.01/.3       | INCH/MM        |
|             | 0°±2'                                 |           | .XXX±.005/.13    | scale 1:1      |
|             |                                       |           | .XXXX±.0020/.081 |                |
| dr          | G.PETERS                              | 6/19/93   |                  |                |
| enrg        | S.CLARK                               | 6/19/93   |                  |                |
| chr         | S.CLARK                               | 6/19/93   |                  |                |
| appd        | S.CLARK                               | 6/19/93   |                  |                |
| sheet       | revision                              |           |                  |                |
| index       | sheet                                 |           |                  |                |

|                   |   |
|-------------------|---|
| product family    | HPC   |
| title             | 3 ROW R/A RECEPT.<br>PRESS FIT, 0 GUIDE PIN |
| dwg no            | 50645                                       |
| sheet 4 of 4 size | A3  |
| Type              | Product Customer Drawing                    |