

## Excellent Integrated System Limited

Stocking Distributor

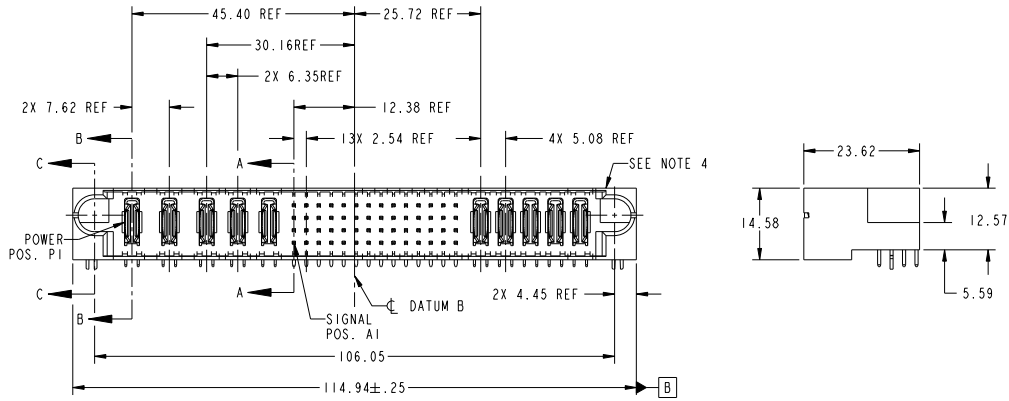
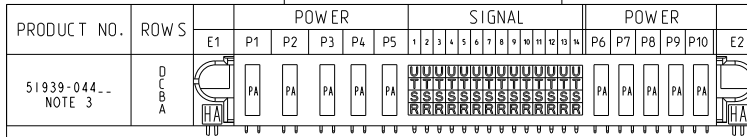
Click to view price, real time Inventory, Delivery & Lifecycle Information:

[FCI](#)  
[51939-044](#)

For any questions, you can email us directly:  
[sales@integrated-circuit.com](mailto:sales@integrated-circuit.com)

Tous droits strictement réservés. Reproduction ou communication de des tiers interdite sans autorisation écrite du propriétaire. Propriété de FCI. Droits de reproduction FCI.

All rights strictly reserved. Reproduction or issue to third parties in any form whatever is not permitted without written authority from the proprietor. Property of FCI. Copyright FCI.



CODE	DIM "M" MATING LENGTH	CONTACT TYPE
U	[6.86]	SIGNAL
T	[6.86]	SIGNAL
S	[6.86]	SIGNAL
R	[6.86]	SIGNAL
PA	[N/A]	POWER
HA	[N/A]	HOLD-DOWN

mat'l code				SEE NOTE		tolerances unless otherwise specified	
ltr	ecm no.	dr	date	linear	0.X ± 0.3	projection	COPY
A	V03-0154	TAB	02/05/03		0.XX ± 0.13	MM	www.fciconnect.com
B	DG07-0441	JULIA	11/05/07		0.XXX ± 0.051	1:1	title 3ACP + 2P + 56S + 5P RIGHT ANGLE SOLDER HEADER
C	DG08-0273	WD	12/30/08	angles	0° ± 2°		product family PwrBlade code 213
				dr	T. BRUNGARD 02/05/03		size dwg no 51939-044 sheet 1 of 4
				engr	N. MOSTOLLER 02/05/03		
				chr	N. MOSTOLLER 02/05/03		
				oppd	JOSEPH HSTA 02/05/03		
sheet index	revision sheet	C	C	C	C		
		1	2	3	4		

CUSTOMER		FCI	
www.fciconnect.com		www.fciconnect.com	
COPY		title 3ACP + 2P + 56S + 5P RIGHT ANGLE SOLDER HEADER	
projection		product family PwrBlade code 213	
MM		size dwg no 51939-044 sheet 1 of 4	
scale 1:1			

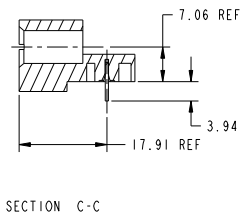
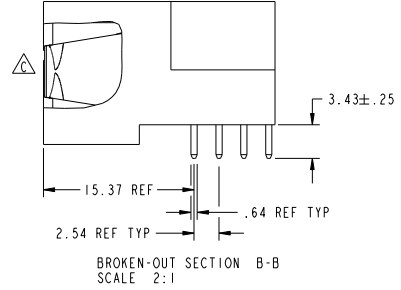
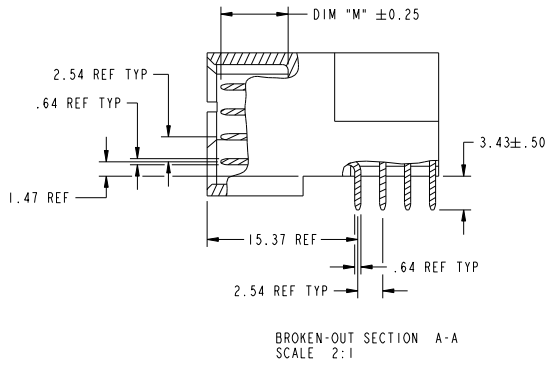
cage code 22526

Tous droits strictement réservés. Reproduction ou communication à des tiers interdite sans aucune forme que ce soit sans autorisation écrite du propriétaire. Propriété de FCI. Droits de reproduction FCI.

All rights strictly reserved. Reproduction or issue to third parties in any form whatever is not permitted without written authority from the proprietor. Property of FCI. Copyright FCI.



PRODUCT NUMBER  
51939-044  
NOTE: 3



mat'l code		SEE NOTE		tolerances unless otherwise specified		CUSTOMER	
ltr	ecm no.	dr	date	linear	0.X ±0.3	projection	www.fciconnect.com
C					0.XX ±0.13	MM	3ACP + 2P + 56S + 5P
				angles	0.XXX ±0.051	scale	RIGHT ANGLE SOLDER HEADER
				dr	0° ±2°	1:1	product family PwrBlade code
				eng	T. BRUNGARD 02/05/03		size
				chr	N. MOSTOLLER 02/05/03		dwg no
				opd	N. MOSTOLLER 02/05/03		51939-044
					JOSEPH HSIA 02/05/03		213
sheet index	revision sheet						2 of 4

Pro/E

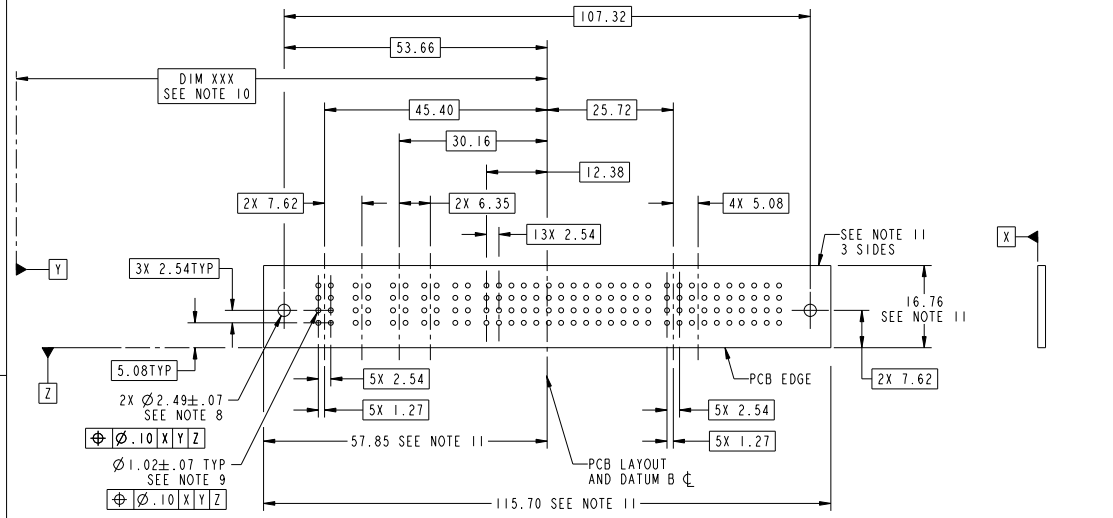
cage code 22526

Tous droits strictement réservés. Reproduction ou communication à des tiers interdite sous quelque forme que ce soit sans autorisation écrite du propriétaire. Propriété de FCI. Droits de reproduction FCI.

All rights strictly reserved. Reproduction or issue to third parties in any form whatever is not permitted without written authority from the proprietor. Property of FCI. Copyright FCI.



PRODUCT NUMBER  
51939-044...  
NOTE: 3



RECOMMENDED PCB LAYOUT

mat'l code				SEE NOTE	tolerances unless otherwise specified	CUSTOMER	
ltr	ecm no.	dr	date	linear	0 . X ± 0.3	COPY	www.fciconnect.com
C				angles	0 . XX ± 0.13	projection	
				dr	0 . XXX ± 0.051	MM	title
				engr	0° ± 2°	scale	3ACP + 2P + 56S + 5P
				chr		1:1	RIGHT ANGLE SOLDER HEADER
				oppd			product family
sheet index	revision sheet						PwrBlade
							code
							213
							sheet
							3 of 4
							cage code
							22526

Tous droits strictement réservés. Reproduction ou communication à des tiers interdite sous quelque forme que ce soit sans autorisation écrite du propriétaire. Propriété de FCI. Droits de reproduction FCI.

All rights strictly reserved. Reproduction or issue to third parties in any form whatever is not permitted without written authority from the proprietor. Property of FCI. Copyright FCI.

PRODUCT NUMBER  
51939-044  
NOTE: 3

NOTES:

1. DIMENSIONS AND TOLERANCES ARE IN ACCORDANCE WITH ASME Y14.5M, 1994 UNLESS OTHERWISE SPECIFIED.  
 CONNECTOR NOTES:

- 2. HOUSING MATERIAL: UL 94 V-0 GLASS FILLED HIGH-TEMP THERMOPLASTIC  
 POWER CONTACT MATERIAL: COPPER ALLOY  
 SIGNAL PIN MATERIAL: COPPER ALLOY
- 3. SEE ITEM 1 & 2 IN PRINT 10064183 FOR PLATING SPEC OF 51939-044 AND 51939-044LF RESPECTIVELY.
- 4. MANUFACTURER'S NAME, P/N, AND DATE CODE TO APPEAR ON THIS SURFACE.
- 5. PRODUCT SPECIFICATION GS-12-149.  
 APPLICATION SPECIFICATION BUS-20-067.
- 6. PACKAGED IN TRAYS.

PCB NOTES:

- 7. ALL HOLE DIAMETERS ARE FINISHED HOLE SIZE.
- 8. MOUNTING HOLES, WHERE APPLICABLE, ARE UNPLATED.
- 9.  $\varnothing 1.151 \pm 0.025$  DRILLED HOLES PLATED WITH  
 0.008 MIN SnPb OR Sn OVER 0.03  
 TO 0.08 Cu PLATING TO ACHIEVE  
 $\varnothing 1.02 \pm .07$  HOLE.
- 10. "DIM XXX" TO BE DETERMINED BY THE CUSTOMER.
- 11. CONNECTOR KEEP-OUT ZONE.

12. A  $\Delta$  SYMBOL WILL BE NEXT TO ANY DIMENSION, VIEW, OR NOTE WHICH HAS BEEN MODIFIED WITH THE CURRENT DRAWING REVISION.

mat'l code				SEE NOTE		tolerances unless otherwise specified		CUSTOMER	
ltr	ecm no.	dr	date	linear	angular	projection	scale	www.fciconnect.com	
C				$0.X \pm 0.3$	$0.XX \pm 0.13$		1:1	title 3ACP + 2P + 56S + 5P RIGHT ANGLE SOLDER HEADER	
				$0.XXX \pm 0.051$	$0^\circ \pm 2^\circ$			product family PwrBlade code 213	
				dr T. BRUNARD 02/05/03	engr N. MOSTOLLER 02/05/03			size A 51939-044 sheet 4 of 4	
				chr N. MOSTOLLER 02/05/03	opd JOSEPH HSIA 02/05/03			cage code 22526	
sheet index	revision sheet								