

Excellent Integrated System Limited

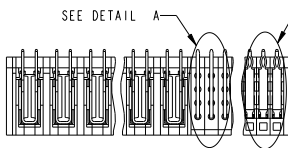
Stocking Distributor

Click to view price, real time Inventory, Delivery & Lifecycle Information:

[FCI](#)
[51726-11001200A0LF](#)

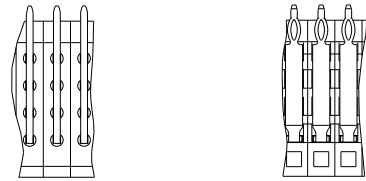
For any questions, you can email us directly:
sales@integrated-circuit.com

PRODUCT NUMBER	51726-ABBCC00E0...		
SEE NOTE 1			



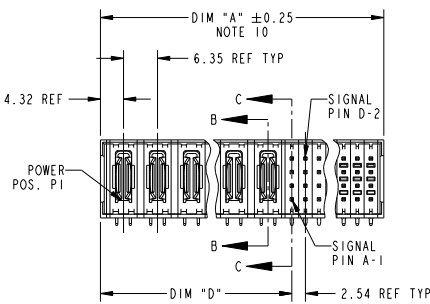
SEE DETAIL A

SEE DETAIL B



DETAIL A
SCALE 2:1
FOR SOLDER TO BOARD ONLY

DETAIL B
SCALE 2:1
FOR PRESS FIT ONLY



DIM "A" ±0.25
NOTE 10

6.35 REF TYP

4.32 REF

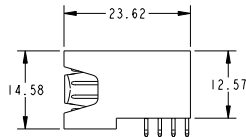
POWER POS. P1

SIGNAL PIN D-2

SIGNAL PIN A-1

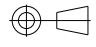


DIM "D"

2.54 REF TYP



23.62

12.57

spec ref *		dr Jerome Chen	2008/09/11	projection  MM 	size A4	scale 1:1
tolerance std ASME Y14.5		eng Ruan MT	2015/09/30		ec n no ELX-DG-21593-1	
TOLERANCES UNLESS OTHERWISE SPECIFIED linear 0.X ±0.5 0.XX ±0.25 0.XXX ±0.100 angular 0° ±2°		chr Fancy Zhang	2015/09/30		rel level Released	
		appr Pei-Ming Zheng	2015/09/30		product family PwrBlade	
surface ASME Y14.5	linear	 R/A HEADER W/O GUIDE PIN POWER / SIGNAL		www.fci.com cat. no.	dwg no 51726	rev N
				Product - Customer Drw		sheet 1 of 3

PAGE FILE : REV C - 2009-08-09

1

2

3

PDS: Rev :N

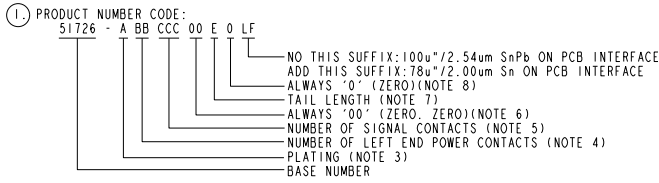
STATUS:Released

Printed: Oct 08, 2015

Copyright FCI.

PRODUCT NUMBER	DIM	LENGTH FORMULAS (SEE NOTE 10)
51726-ABBCC00E0...	DIM "A"	$6.35 \times BB + 2.54 \times (CCC/4) + 2.29$ (NOTE 10)
SEE NOTE 1	DIM "D"	$6.35 \times BB + 2.41$
	DIM "F"	$6.35 \times BB + 2.54 \times (CCC/4) + 3.05$
	DIM "G"	$6.35 \times BB - 0.64$

CONNECTOR NOTES



- ② HOUSING MATERIAL: GLASS FILLED V-0 HIGH TEMP THERMO PLASTIC.
 SIGNAL CONTACT MATERIAL: COPPER ALLOY
 POWER CONTACT MATERIAL: COPPER ALLOY
- ③ PLATING OPTION:
 1 - SEE PRINT 10064183 FOR PLATING SPEC OF 51726-1BBCC00E0; 51726-1BBCC00E0LF
- ④ LEFT END POWER CONTACTS, 01 TO 20 AVAILABLE.
 MAXIMUM OF 20 POWER CONTACTS PER CONNECTOR
- ⑤ SIGNAL CONTACTS, 004 TO 148 AVAILABLE.
- ⑥ THIS PART IS NOT AVAILABLE WITH RIGHT SIDE POWER CONTACTS.

- ⚠ ⑦ TAIL LENGTH:
 A = 3.43 SOLDER TO BOARD
 B = 4.19 SOLDER TO BOARD
 C = 3.43 PRESS FIT
 D = 2.34 SOLDER TO BOARD

- ⑧ BOARD RETENTION IS NOT AVAILABLE WITH GUIDELESS ENDS.
 - ⑨ MANUFACTURE'S NAME, P/N, AND DATE CODE TO APPEAR ON THIS SURFACE.
 - ⑩ THE MAXIMUM OVERALL LENGTH (DIM A) OF A PART IS 203.2
 - 11. PRODUCT SPECIFICATION GS-12-149
 APPLICATION SPECIFICATION BUS-20-067
 - 12. REFERENCE 51697 FOR SELECT LOAD/FMLB WORKSHEET
- PCB NOTES:
- 13. ALL DIMENSIONS ARE BASIC UNLESS OTHERWISE SPECIFIED.
 - ⑭ ALL THROUGH HOLES ARE LOCATED WITH A TRUE POSITION OF 0.10
 - 15. ALL HOLE DIAMETERS ARE FINISHED HOLE SIZE.
 - ⑮ $\varnothing 1.151 \pm 0.025$ DRILLED HOLES PLATED WITH 0.008 MIN SnPb or Sn OVER 0.03 TO 0.08 Cu PLATING TO ACHIEVE A 1.02±0.07 HOLE.
 - 17. ⚠ SYMBOL WILL BE NEXT TO ANY DIMENSION, VIEW, OR NOTE WHICH HAS BEEN MODIFIED WITH THE CURRENT DRAWING REVISION.
 - ⚠ ⑯ CONNECTOR KEEP OUT ZONE

dr	Jerome Chen	2008/09/11	projection	MM	size	A4	scale	1:1	
eng	Ruan MT	2015/09/30			ec n no	ELX-DG-21593-1			
chr	Fancy Zhang	2015/09/30	product family	PwrBlade	rel level	Released			
appr	Pei-Ming Zheng	2015/09/30	R/A HEADER W/O GUIDE PIN		dwg no	51726		rev	N
www.fci.com			cat. no.	Product - Customer Drw	sheet 2 of 3				

Part File - REV C - 2009-06-09

1

2

3

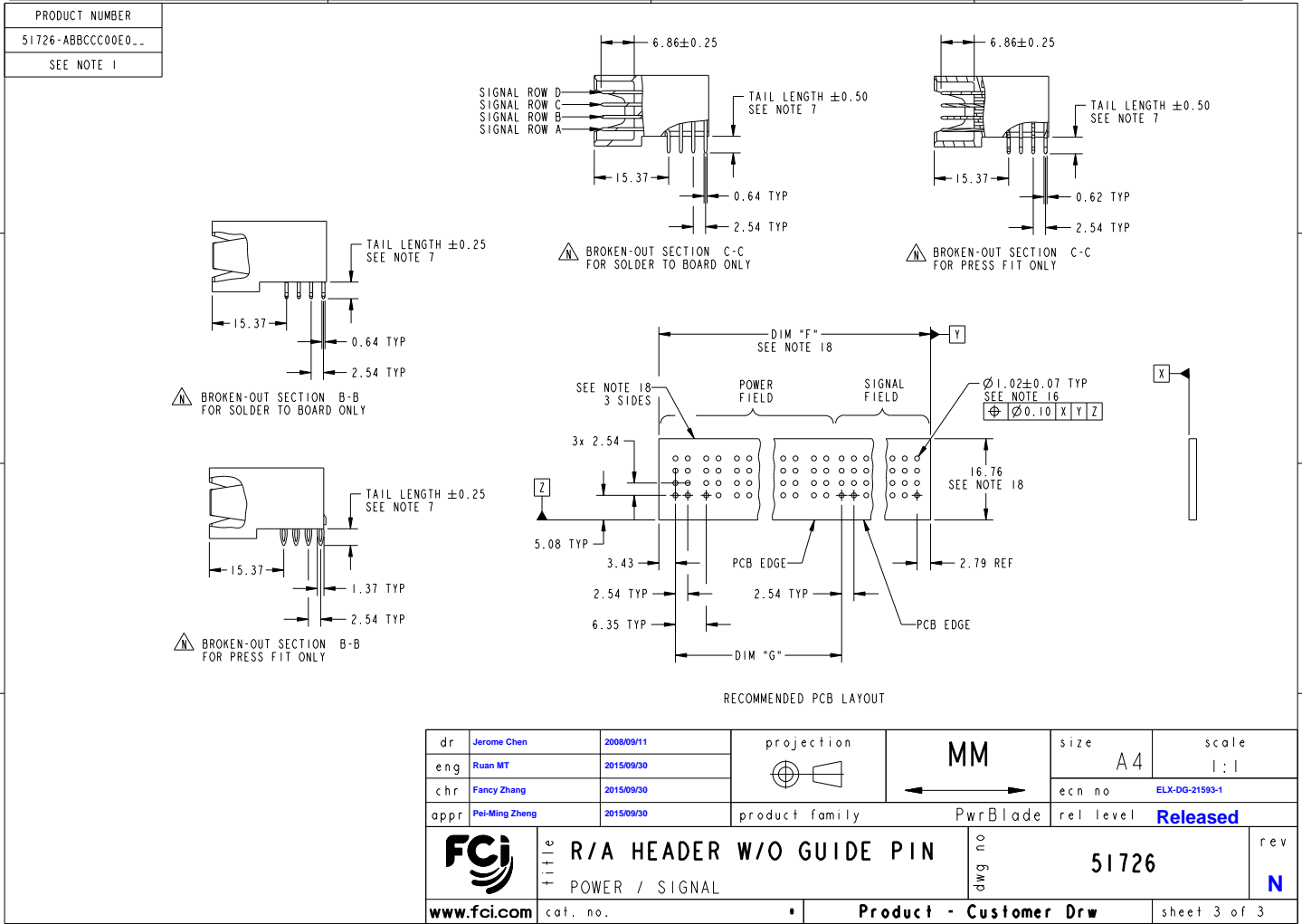
PDS: Rev :N

STATUS:Released

Printed: Oct 08, 2015



Copyright FCI.



Copyright FCI.

PWR File - REV C - 2009-06-09

1

2

3

PDS: Rev :N

STATUS:Released

Printed: Oct 08, 2015