

Excellent Integrated System Limited

Stocking Distributor

Click to view price, real time Inventory, Delivery & Lifecycle Information:

[FCI](#)
[51754-006](#)

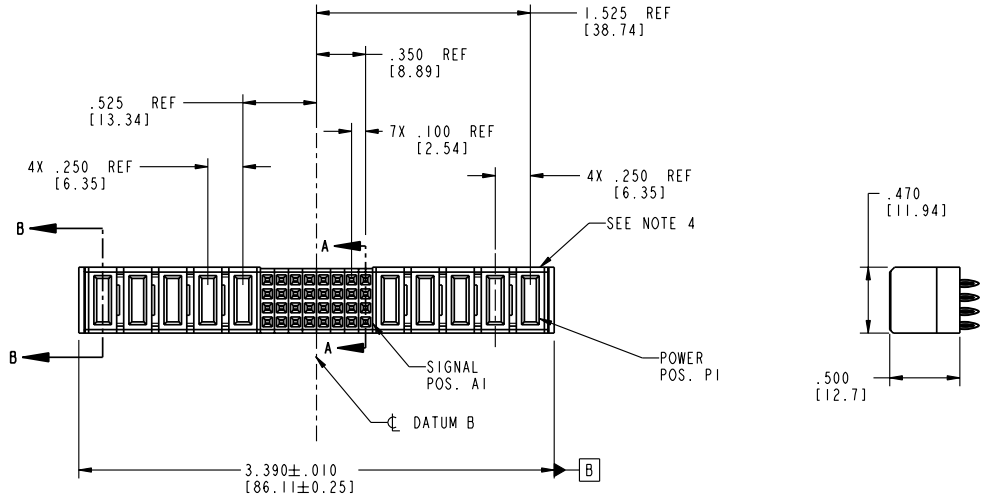
For any questions, you can email us directly:
sales@integrated-circuit.com

Tous droits strictement réservés. Reproduction ou communication à des tiers interdite sous quelque forme que ce soit sans autorisation écrite du propriétaire. Propriété de c FCI. Droits de reproduction FCI.



All rights strictly reserved. Reproduction or issue to third parties in any form whatever is not permitted without written authority from the proprietor. Property of FCI. Copyright FCI.

PRODUCT NO.	ROWS	POWER					SIGNAL					POWER								
		P10	P9	P8	P7	P6	8	7	6	5	4	3	2	1	P5	P4	P3	P2	P1	
51754-006	D C B A	PF	PC	PF	PC	PF	PF	PF	PF	PF	PF	PF	PF	PF	PF	PC	PF	PC	PF	PC



CODE	DIM "M" MATING LENGTH	CONTACT TYPE
PF	.092 [2.34]	POWER
PC	.042 [1.07]	POWER
F	N/A [N/A]	SIGNAL

mat'l code		SEE NOTE 2	tolerances unless otherwise specified		CUSTOMER	www.fciconnect.com 5P + 32S + 5P VERTICAL PRESS FIT RECEPT
lfr	ecm no.	dr	date	linear	COPY	
A	V03-0693	MEM	6/23/03	.XX±.01/0.X±0.3 .XXX±.005/0.XX±0.13 .XXX±.0020/0.XXX±0.051	projection	product family
				angles	INCH/MM	size
				dr	M. MOSTOLLER 6/23/03	dwg no
				enrg	M. MOSTOLLER 6/23/03	A
				chr	H. BREWBAKER 6/23/03	51754-006
				appd	M. MOSTOLLER 6/23/03	code
sheet index	revision sheet	A	A	A	A	213
		1	2	3	4	sheet
						1 of 4

Pro/E

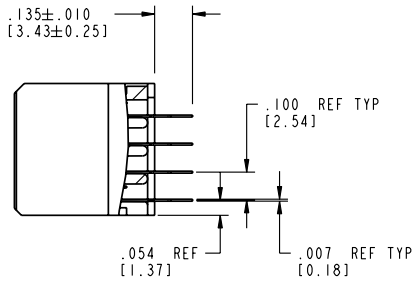
cage code 22526

Tous droits strictement réservés. Reproduction ou communication à des tiers interdite sous quelque forme que ce soit sans autorisation écrite du propriétaire. Propriété de c FCI. Droits de reproduction FCI.

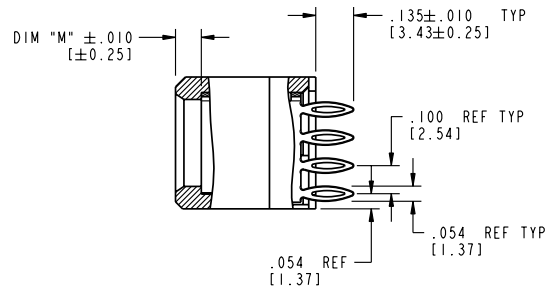
FCI

All rights strictly reserved. Reproduction or issue to third parties in any form whatever is not permitted without written authority from the proprietor. Property of FCI. Copyright FCI.

PRODUCT NUMBER
51754-006



SECTION A-A
SCALE 2:1



SECTION B-B
SCALE 2:1

mat'l code		SEE NOTE 2		tolerances unless otherwise specified		CUSTOMER		www.fciconnect.com			
lfr	ecm no.	dr	date	linear	.XX±.01/0.X±0.3	projection	COPY	title 5P + 32S + 5P			
A					.XXX±.005/0.XX±0.13			VERTICAL PRESS FIT RECEIPT			
				angles	.XXX±.0020/0.XXX±0.051			product family	PwrBlade	code	213
				dr	M. MOSTOLLER 6/23/03	scale	A	size	51754-006	sheet	2 of 4
				enrg	M. MOSTOLLER 6/23/03						
				chr	H. BREWBAKER 6/23/03						
				appd	M. MOSTOLLER 6/23/03						
sheet index	revision sheet										

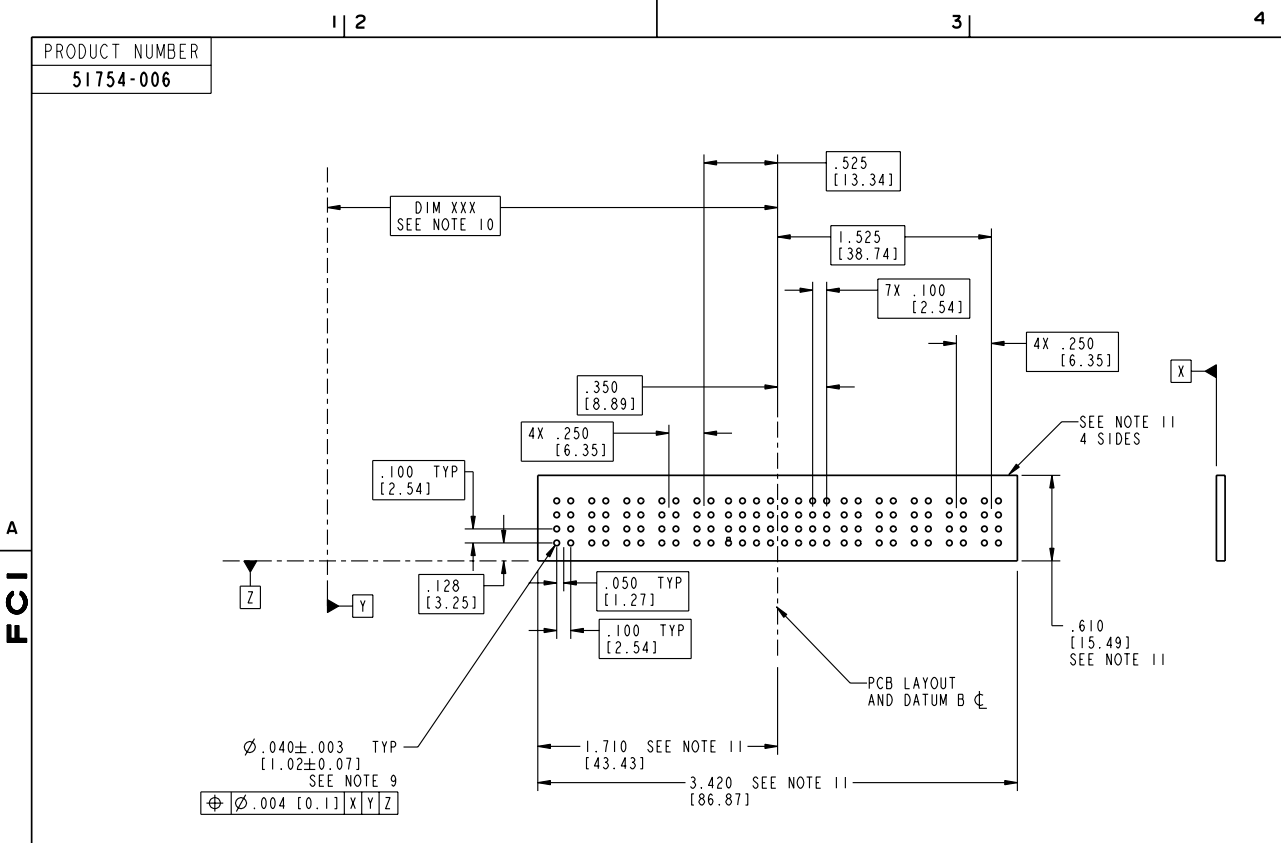
code code 22526

Pro/E

Tous droits strictement réservés. Reproduction ou communication à des tiers interdite sous quelque forme que ce soit sans autorisation écrite du propriétaire. Propriété de c FCI. Droits de reproduction FCI.

A
FCI

All rights strictly reserved. Reproduction or issue to third parties in any form whatever is not permitted without written authority from the proprietor. Property of FCI. Copyright FCI.



mat'l code		SEE NOTE 2	tolerances unless otherwise specified	CUSTOMER	 www.fciconnect.com
lfr	ecn no.	dr	date	COPY	
A				projection	title 5P + 32S + 5P VERTICAL PRESS FIT RECEIPT
				INCH/MM	product family PwrBlade size dwg no 213 sheet 3 of 4
				scale 1:1	code 51754-006 sheet 3 of 4
sheet index	revision sheet				code code 22526

Pro/E

code code 22526

Tous droits strictement réservés. Reproduction ou communication à des tiers interdite sans aucune forme de la part sans autorisation écrite du propriétaire. Propriété de c FCI. Droits de reproduction FCI.



All rights strictly reserved. Reproduction or issue to third parties in any form whatever is not permitted without written authority from the proprietor. Property of FCI. Copyright FCI.

PRODUCT NUMBER
51754-006

NOTES:

1. DIMENSIONS AND TOLERANCES ARE IN ACCORDANCE WITH ASME Y14.5M, 1994 UNLESS OTHERWISE SPECIFIED.

CONNECTOR NOTES:

- ② HOUSING MATERIAL: UL 94 V-0 GLASS FILLED HIGH-TEMP THERMOPLASTIC
POWER CONTACT MATERIAL: COPPER ALLOY
SIGNAL PIN MATERIAL: COPPER ALLOY
- 3. PLATING:
SIGNAL PINS: 30u"/0.76um Au OVER 50u"/1.27um Ni
POWER CONTACTS: 50u"/1.27um Ni UNDER ALL WITH 30u"/0.76um Au ON CONTACT AREA AND SnPb ON PCB INTERFACE

④ MANUFACTURER'S NAME, P/N, AND DATE CODE TO APPEAR ON THIS SURFACE.

5. PRODUCT SPECIFICATION GS-12-149.
APPLICATION SPECIFICATION BUS-20-067.

6. PACKAGED IN TRAYS.

PCB NOTES:

- 7. ALL HOLE DIAMETERS ARE FINISHED HOLE SIZE.
- ⑧ MOUNTING HOLES, WHERE APPLICABLE, ARE UNPLATED.
- ⑨ $\varnothing .0453 \pm .0010$ [1.151 \pm 0.025] DRILLED HOLES PLATED WITH .0003 [0.008] MIN SnPb OVER .001 [0.03] TO .003 [0.08] Cu PLATING TO ACHIEVE $\varnothing .040 \pm .003$ [1.02 \pm .07] HOLE.
- ⑩ "DIM XXX" TO BE DETERMINED BY THE CUSTOMER.
- ⑪ CONNECTOR KEEP-OUT ZONE.

mat'l code		SEE NOTE 2		tolerances unless otherwise specified		CUSTOMER		www.fciconnect.com	
lfr	ecm no.	dr	date	linear	.XX±.01/0.X±0.3	projection	COPY	title 5P + 32S + 5P	
A					.XXX±.005/0.XX±0.13			VERTICAL PRESS FIT RECEIPT	
				angles	.XXX±.0020/0.XXX±0.051			product family	PwrBlade
				dr	M. MOSTOLLER 6/23/03	INCH/MM	size	dwg no	sheet
				enrg	M. MOSTOLLER 6/23/03	scale	A	51754-006	4 of 4
				chr	H. BREWBAKER 6/23/03	1:1			
				appd	M. MOSTOLLER 6/23/03				
sheet index	revision sheet							cage code	22526

Pro/E

cage code 22526