

## Excellent Integrated System Limited

Stocking Distributor

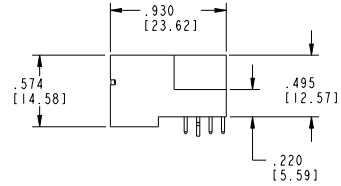
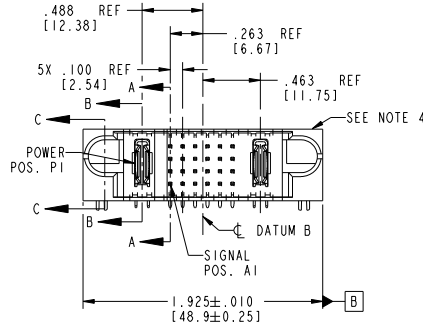
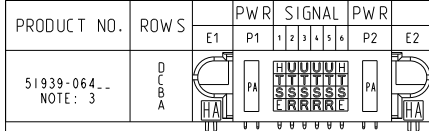
Click to view price, real time Inventory, Delivery & Lifecycle Information:

[FCI](#)  
[51939-064](#)

For any questions, you can email us directly:  
[sales@integrated-circuit.com](mailto:sales@integrated-circuit.com)

Tous droits strictement réservés. Reproduction ou communication de ces lignes interdite sans autorisation écrite du propriétaire. Propriété de c FCI. Droits de reproduction FCI.

All rights strictly reserved. Reproduction or issue in kind, articles in any form whatever is not permitted without written authority from the proprietor. Property of FCI. Copyright FCI.



CODE	DIM "M" MATING LENGTH	CONTACT TYPE
E	.220 [5.59]	SIGNAL
H	.220 [5.59]	SIGNAL
R	.270 [6.86]	SIGNAL
S	.270 [6.86]	SIGNAL
T	.270 [6.86]	SIGNAL
U	.270 [6.86]	SIGNAL
PA	N/A [N/A]	POWER
HA	N/A [N/A]	HOLD-DOWN

mat'l code				SEE NOTE 2		tolerances unless otherwise specified	
ltr	ecm no.	dr	date	linear	.XX±.01/0.XX±0.3		
A	V03-0582	TAB	05/21/03	linear	.XXX±.005/0.XX±0.13		
B	DG06-0014	JMG	01/11/06	linear	.XXX±.0020/0.XX±0.051		
C	DG08-0273	WD	12/31/08	angles	0°±		
				dr	T. BRUNGARD	05/21/03	
				enr	M. MOSTOLLER	05/21/03	
				chr	M. MOSTOLLER	05/21/03	
				oppd	M. MOSTOLLER	05/21/03	
sheet index	revision sheet	C	C	C	C	C	C
		1	2	3	4		

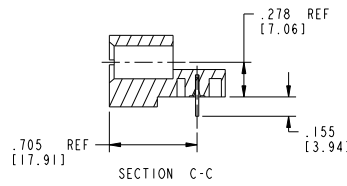
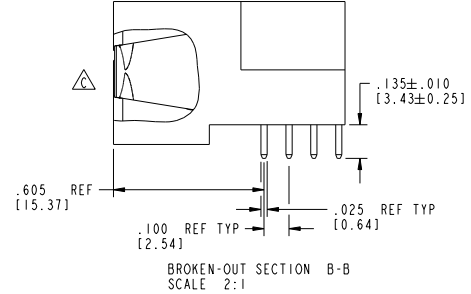
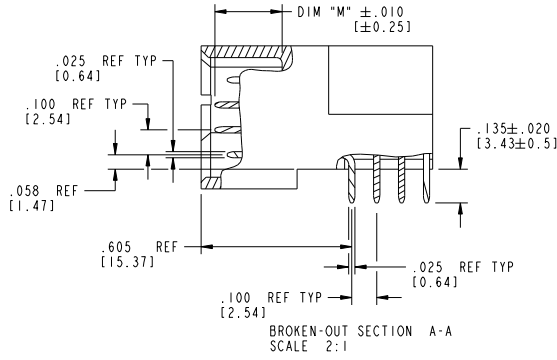
CUSTOMER		FCI	
COPY		www.fciconnect.com	
projection	title	IP + 24S + IP	
INCH/MM	RIGHT ANGLE SOLDER HEADER		
scale	product family	PwrBlade	
1:1	size	51939-064	
	dwg no	213	
	sheet	1 of 4	

Tous droits strictement réservés. Reproduction ou communication, en des lieux interdite sans autorisation écrite du propriétaire. Propriété de FCI. Droits de reproduction FCI.



All rights strictly reserved. Reproduction or issue in any form anywhere is not permitted without written authority from the proprietor. Property of FCI. Copyright FCI.

PRODUCT NUMBER  
51939-064  
NOTE: 3



mat'l code		SEE NOTE 2	tolerances unless otherwise specified		CUSTOMER	FCI		www.fciconnect.com	
ltr	ecm no.	dr	date	linear	XX±.01/0.XX±0.3	COPY	title		
C				linear	XXX±.005/0.XX±0.13	projection	IP + 24S + 1P		
				angles	XXX±.0020/0.XX±0.051	INCH/MM	RIGHT ANGLE SOLDER HEADER		
				dr	0° ± 2°	scale	product	family	PwrBlade
				enr	T. BRUNGARD 05/21/03	1:1	size	dwg no	51939-064
				chr	M. MOSTOLLER 05/21/03		sheet	213	
				oppd	M. MOSTOLLER 05/21/03		of	2 of 4	
sheet index	revision sheet								

Pro/E

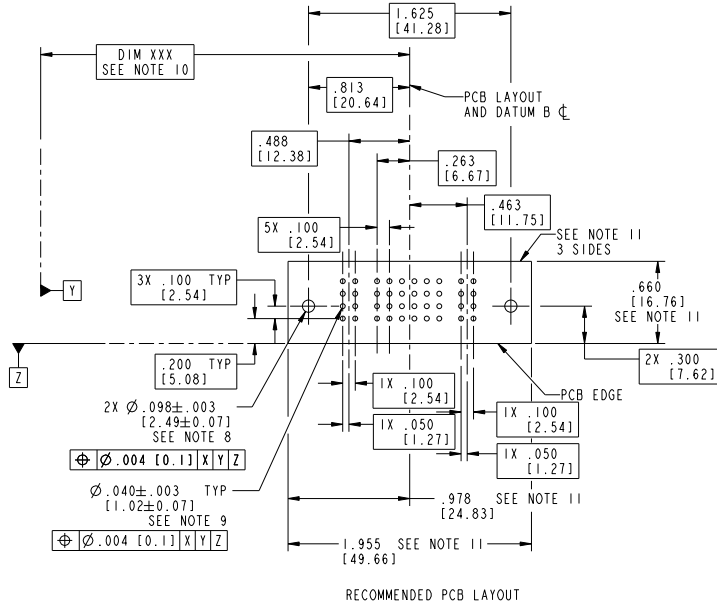
cage code 22526

Tous droits strictement réservés. Reproduction ou communication, en des lieux interdite sans aucune forme que ce soit sans autorisation écrite du propriétaire. Propriété de FCI. Droits de reproduction FCI.



All rights strictly reserved. Reproduction or issue in any form anywhere is not permitted without written authority from the proprietor. Property of FCI. Copyright FCI.

PRODUCT NUMBER  
51939-064...  
NOTE: 3



RECOMMENDED PCB LAYOUT

mat'l code		SEE NOTE 2	tolerances unless otherwise specified	CUSTOMER	www.fciconnect.com title IP + 24S + IP RIGHT ANGLE SOLDER HEADER product family PwrBlade code 213 size dwg no 51939-064 sheet 3 of 4 scale 1:1
ltr	ecm no.	dr	date	linear .XX±.01/0.XX±0.3 .XXX±.005/0.XX±0.13 .XXX±.0020/0.XX±0.051 angles 0°± dr T. BRUNGARD 05/21/03 engr M. MOSTOLLER 05/21/03 chr M. MOSTOLLER 05/21/03 oppd M. MOSTOLLER 05/21/03	
sheet index	revision sheet				

Pro/E

cage code 22526

Tous droits strictement réservés. Reproduction ou communication, en des lieux interdite sans aucune forme que ce soit sans autorisation écrite du propriétaire. Propriété de FCI. Droits de reproduction FCI.

All rights strictly reserved. Reproduction or issue in third parties in any form whatever is not permitted without written authority from the proprietor. Property of FCI. Copyright FCI.

PRODUCT NUMBER  
51939-064  
NOTE: 3

NOTES:

1. DIMENSIONS AND TOLERANCES ARE IN ACCORDANCE WITH ASME Y14.5M, 1994 UNLESS OTHERWISE SPECIFIED.

CONNECTOR NOTES:

- 2. HOUSING MATERIAL: UL 94 V-0 GLASS FILLED HIGH-TEMP THERMOPLASTIC  
POWER CONTACT MATERIAL: COPPER ALLOY  
SIGNAL PIN MATERIAL: COPPER ALLOY
  - 3. SEE ITEM 1 & 2 IN PRINT 10064183 FOR PLATING SPEC OF 51939-064 AND 51939-064LF RESPECTIVELY.
  - 4. MANUFACTURER'S NAME, P/N, AND DATE CODE TO APPEAR ON THIS SURFACE.
  - 5. PRODUCT SPECIFICATION GS-12-149.  
APPLICATION SPECIFICATION BUS-20-067.
  - 6. PACKAGED IN TRAYS.
- PCB NOTES:
- 7. ALL HOLE DIAMETERS ARE FINISHED HOLE SIZE.
  - 8. MOUNTING HOLES, WHERE APPLICABLE, ARE UNPLATED.
  - 9.  $\varnothing .0453 \pm .0010$  [1.151  $\pm$  0.025] DRILLED HOLES PLATED WITH .0003 [0.008] MIN SnPb OVER .001 [0.03] TO .003 [0.08] Cu PLATING TO ACHIEVE  $\varnothing .040 \pm .003$  [1.02  $\pm$  .07] HOLE.
  - 10. "DIM XXX" TO BE DETERMINED BY THE CUSTOMER.
  - 11. CONNECTOR KEEP-OUT ZONE.
  - 12. A  $\Delta$  SYMBOL WILL BE NEXT TO ANY DIMENSION, VIEW, OR NOTE WHICH HAS BEEN MODIFIED WITH THE CURRENT DRAWING REVISION.

mat'l code		SEE NOTE 2	tolerances unless otherwise specified	CUSTOMER	FCI www.fciconnect.com	
ltr	ecm no.	dr	date	linear	projection	title
C				$.XX \pm .01 / 0 .XX + 0.3$		IP + 24S + IP RIGHT ANGLE SOLDER HEADER
				$.XXX \pm .005 / 0 .XX + 0.13$		product family PwrBlade code 213
				angles	$0^\circ \pm 0^\circ$	size dwg no 51939-064 sheet 4 of 4
				dr	T. BRUNGARD 05/21/03	scale
				enrg	M. MOSTOLLER 05/21/03	INCH/MM
				chr	M. MOSTOLLER 05/21/03	1:1
				oppd	M. MOSTOLLER 05/21/03	
sheet index	revision sheet					

cage code 22526