

## Excellent Integrated System Limited

Stocking Distributor

Click to view price, real time Inventory, Delivery & Lifecycle Information:

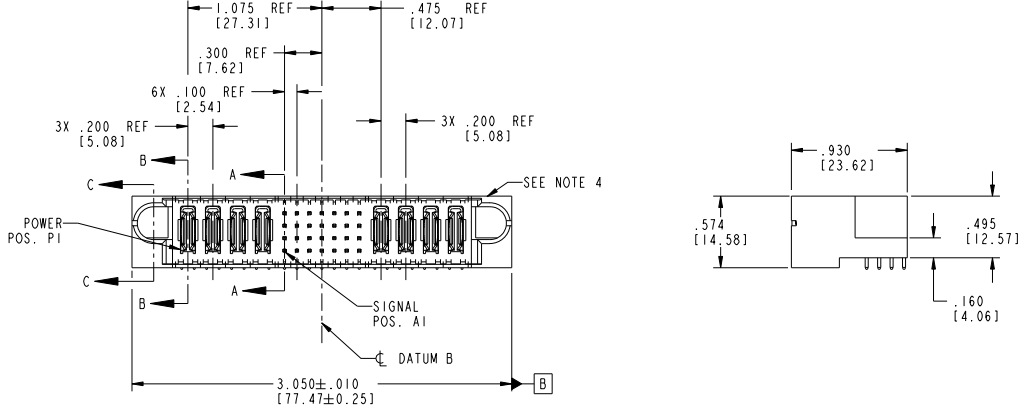
[FCI](#)  
[51939-055](#)

For any questions, you can email us directly:  
[sales@integrated-circuit.com](mailto:sales@integrated-circuit.com)

Tous droits strictement réservés. Reproduction ou communication de ces lignes infidèle sans aucune forme ou de son sans autorisation écrite du propriétaire. Propriété de FCI. Droits de reproduction FCI.

All rights strictly reserved. Reproduction or issue in any form without written authority from the proprietor. Property of FCI. Copyright FCI.

PRODUCT NO.	ROWS	POWER				SIGNAL				POWER								
		E1	P1	P2	P3	P4	1	2	3	4	5	6	7	P5	P6	P7	P8	E2
51939-055 NOTE ①	D C B A	PC	PC	PC	PC	PC	PC	PC	PC	PC	PC	PC	PC	PC	PC	PC	PC	PC



CODE	DIM "M"	MATING LENGTH	CONTACT TYPE
PC	N/A	[N/A]	POWER
V	.270	[6.86]	SIGNAL
Q	.270	[6.86]	SIGNAL
P	.270	[6.86]	SIGNAL
N	.270	[6.86]	SIGNAL
B	.220	[5.59]	SIGNAL

mat'l code				SEE NOTE 2		tolerances unless otherwise specified	
ltr	ecm no.	dr	date	linear	XX±.01/0.XX±0.3	projection	
A	V03-0391	MEM	4/7/03		XX±.005/0.XX±0.13		
B	DG05-0064	SW	04/05/05		XX±.0020/0.XX±0.051		
C	DG06-0014	JMG	01/10/06	angles	0°±		
D	DG08-0273	WD	12/30/08	dr	M. MOSTOLLER 4/7/03		
				enr	M. MOSTOLLER 4/7/03		
				chr	H. BREWBAKER 4/7/03		
				oppd	M. MOSTOLLER 4/7/03		
sheet index	revision sheet	D	D	D	D		
		1	2	3	4		

CUSTOMER		FCI	
COPY		www.fciconnect.com	
title		4P + 28S + 4P	
projection		RIGHT ANGLE SOLDER HEADER	
product family		PwrBlade	
size		dwg no 51939-055	
scale		1:1	
code		213	
		sheet 1 of 4	

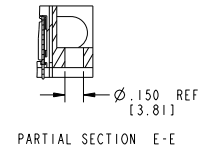
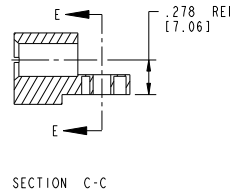
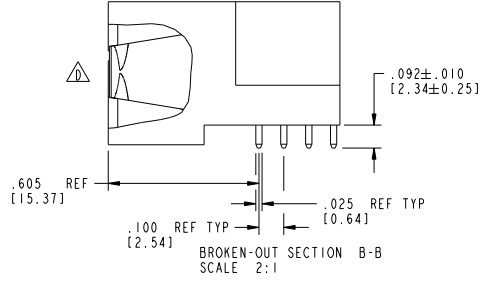
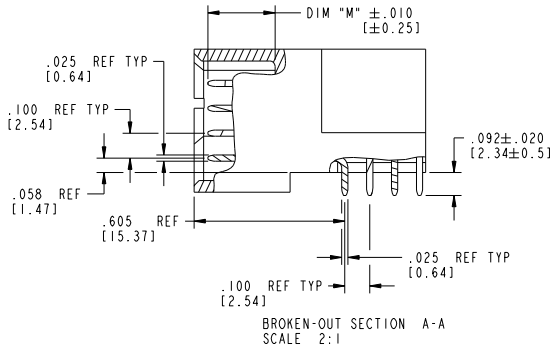
cage code 22526

Tous droits strictement réservés. Reproduction ou communication de ces lignes interdite sans autorisation écrite du propriétaire. Propriété de FCI. Droits de reproduction FCI.



All rights strictly reserved. Reproduction or issue in third parties in any form without written authority from the proprietor. Property of FCI. Copyright FCI.

PRODUCT NUMBER  
51939-055  
NOTE(3)



mat'l code		SEE NOTE 2		tolerances unless otherwise specified		CUSTOMER	
ltr	ecm no.	dr	date	linear	XX±.01/0.XX±0.3	COPY	www.fciconnect.com
D				linear	XXX±.005/0.XX±0.13	projection	title 4P + 28S + 4P
				angles	XXX±.0020/0.XX±0.051	INCH/MM	RIGHT ANGLE SOLDER HEADER
				dr	M. MOSTOLLER 4/7/03	product family	PwrBlade code 213
				enr	M. MOSTOLLER 4/7/03	size	dwg no 51939-055 sheet 2 of 4
				chr	H. BREWBAKER 4/7/03	scale	A
				oppd	M. MOSTOLLER 4/7/03	scale	1:1
sheet index	revision sheet						

Pro/E

cage code 22526



Tous droits strictement réservés. Reproduction ou communication, en des lieux interdite sans autorisation écrite du propriétaire. Propriété de FCI. Droits de reproduction FCI.

All rights strictly reserved. Reproduction or issue in third parties in any form wherever is not permitted without written authority from the proprietor. Property of FCI. Copyright FCI.

PRODUCT NUMBER  
51939-055  
NOTE(3)

NOTES:

1. DIMENSIONS AND TOLERANCES ARE IN ACCORDANCE WITH ASME Y14.5M, 1994 UNLESS OTHERWISE SPECIFIED.

CONNECTOR NOTES:

2. HOUSING MATERIAL: UL 94 V-0 GLASS FILLED HIGH-TEMP THERMOPLASTIC  
 POWER CONTACT MATERIAL: COPPER ALLOY  
 SIGNAL PIN MATERIAL: COPPER ALLOY

3. SEE ITEM 1 & 2 IN PRINT 10064183 FOR PLATING SPEC OF 51939-055 AND 51939-055LF RESPECTIVELY.

4. MANUFACTURER'S NAME, P/N, AND DATE CODE TO APPEAR ON THIS SURFACE.

5. PRODUCT SPECIFICATION GS-12-149.  
 APPLICATION SPECIFICATION BUS-20-067.

6. PACKAGED IN TRAYS.

PCB NOTES:

7. ALL HOLE DIAMETERS ARE FINISHED HOLE SIZE.

8. MOUNTING HOLES, WHERE APPLICABLE, ARE UNPLATED.

9.  $\varnothing .0453 \pm .0010$  [1.151 ± 0.025] DRILLED HOLES PLATED WITH  
 .0003 [0.008] MIN SnPb OVER .001 [0.03]  
 TO .003 [0.08] Cu PLATING TO ACHIEVE  
 $\varnothing .040 \pm .003$  [1.02 ± .07] HOLE.

10. "DIM XXX" TO BE DETERMINED BY THE CUSTOMER.

11. CONNECTOR KEEP-OUT ZONE.

12. A  $\Delta$  SYMBOL WILL BE NEXT TO ANY DIMENSION, VIEW, OR NOTE WHICH HAS BEEN MODIFIED WITH THE CURRENT DRAWING REVISION.

mat'l code		SEE NOTE 2		tolerances unless otherwise specified		CUSTOMER	
ltr	ecm no.	dr	date	linear	$.XX \pm .01/0 .XX \pm 0.3$	COPY	
D				projection	$.XXX \pm .005/0 .XX \pm 0.13$	www.fciconnect.com	
				angles	$.XXX \pm .002/0 .XX \pm 0.051$	title 4P + 28S + 4P	
				dr	$0^\circ \pm 2^\circ$	RIGHT ANGLE SOLDER HEADER	
				enr	M. MOSTOLLER 4/17/03	product family PwrBlade code 213	
				chr	H. BREWBAKER 4/17/03	size dwg no 51939-055 sheet 4 of 4	
				oppd	M. MOSTOLLER 4/17/03	scale 1:1	
sheet index	revision sheet					cage code 22526	