

## Excellent Integrated System Limited

Stocking Distributor

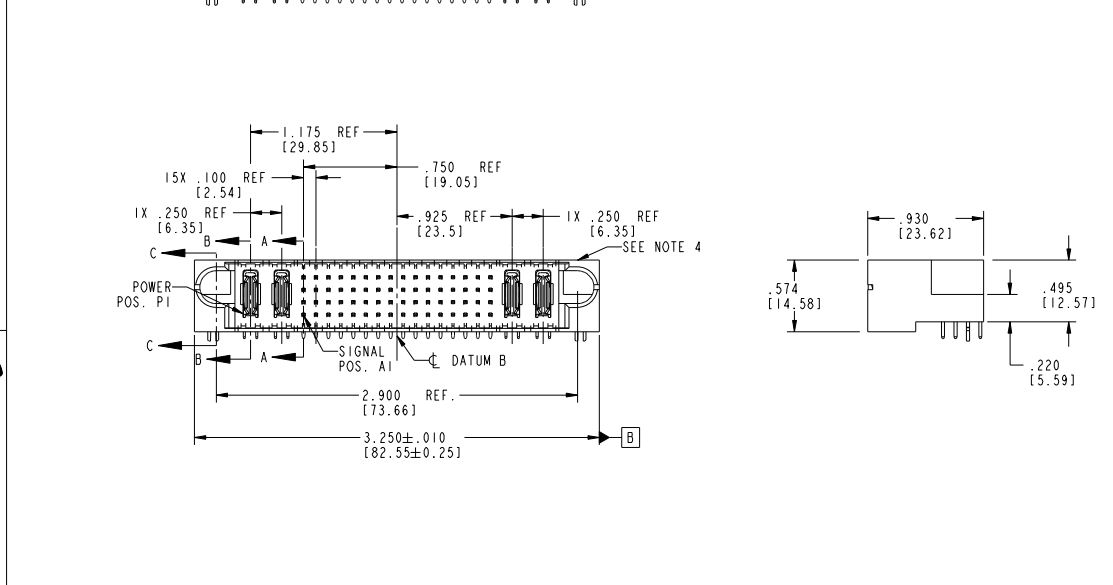
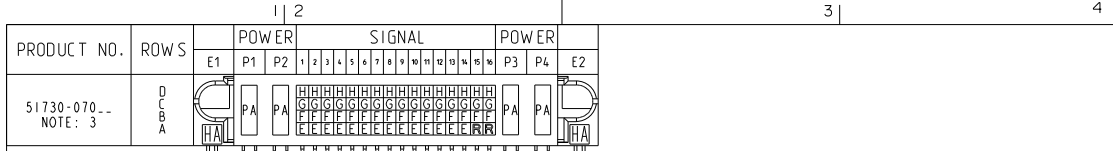
Click to view price, real time Inventory, Delivery & Lifecycle Information:

[FCI](#)  
[51730-070](#)

For any questions, you can email us directly:  
[sales@integrated-circuit.com](mailto:sales@integrated-circuit.com)

Tous droits strictement réservés. Reproduction ou communication à des fins infidélité sans autorisation écrite du propriétaire. Propriété de FCI. Droits de reproduction FCI.

All rights strictly reserved. Reproduction or issue in third parties in any form without written authority from the proprietor. Property of FCI. Copyright FCI.



CODE	DIM "M" MATING LENGTH	CONTACT TYPE
PA	N/A [N/A]	POWER
HA	N/A [N/A]	HOLD-DOWN
H	.220 [5.59]	SIGNAL
G	.220 [5.59]	SIGNAL
F	.220 [5.59]	SIGNAL
E	.220 [5.59]	SIGNAL
R	.270 [6.86]	SIGNAL

ltr	ecm no.	dr	date	tolerances unless otherwise specified
A	V03-0094	TAB	01/23/03	linear .XX±.01/0.XX±0.13
B	V03-0185	MEM	27/12/03	linear .XXX±.002/0.XX±0.051
C	DG05-0501	GuoJM	11/24/05	angles 0°±
D	DG08-0253	SH	09/13/08	dr I. BRUNARD 01/23/03 enr M. MOSTOLLER 01/23/03 chr M. MOSTOLLER 01/23/03 oppd M. MOSTOLLER 01/23/03

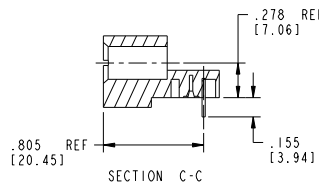
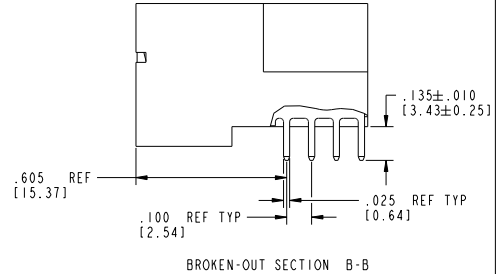
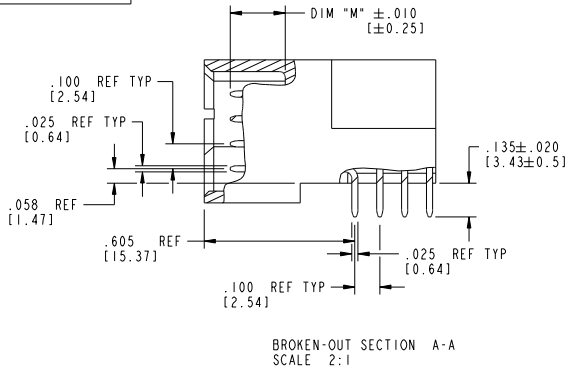
CUSTOMER		FCI	
www.fciconnect.com		www.fciconnect.com	
COPY		projection	
title		2P + 64S + 2P	
RIGHT ANGLE SOLDER HEADER		product family PwrBlade	
size		code 213	
dwg no		sheet 1 of 4	
A 51730-070		code code 22526	

Tous droits strictement réservés. Reproduction ou communication, en des lieux interdite sans aucune forme que ce soit sans autorisation écrite du propriétaire. Propriété de c FCI. Droits de reproduction FCI.



All rights strictly reserved. Reproduction or issue in any form anywhere is not permitted without written authority from the proprietor. Property of FCI. Copyright FCI.

PRODUCT NUMBER  
51730-070...  
NOTE: 3



mat'l code		SEE NOTE 2		tolerances unless otherwise specified		CUSTOMER		FCI		www.fciconnect.com	
ltr	ecm no.	dr	date	linear	XX±.01/0.XX+0.3	projection	COPY	title	2P + 64S + 2P		
D				angles	XXX±.005/0.XX+0.13	INCH/MM		RIGHT ANGLE SOLDER HEADER			
				dr	XXX±.002/0.XX+0.051	scale	1:1	product family	PwrBlade		
				enr	T. BRUNARD 01/23/03	size	A	dwg no	51730-070		
				chr	M. MOSTOLLER 01/23/03	sheet	213	code	2 of 4		
				appd	M. MOSTOLLER 01/23/03	sheet	2	code	22526		
sheet index	revision sheet										

Pro/E

3

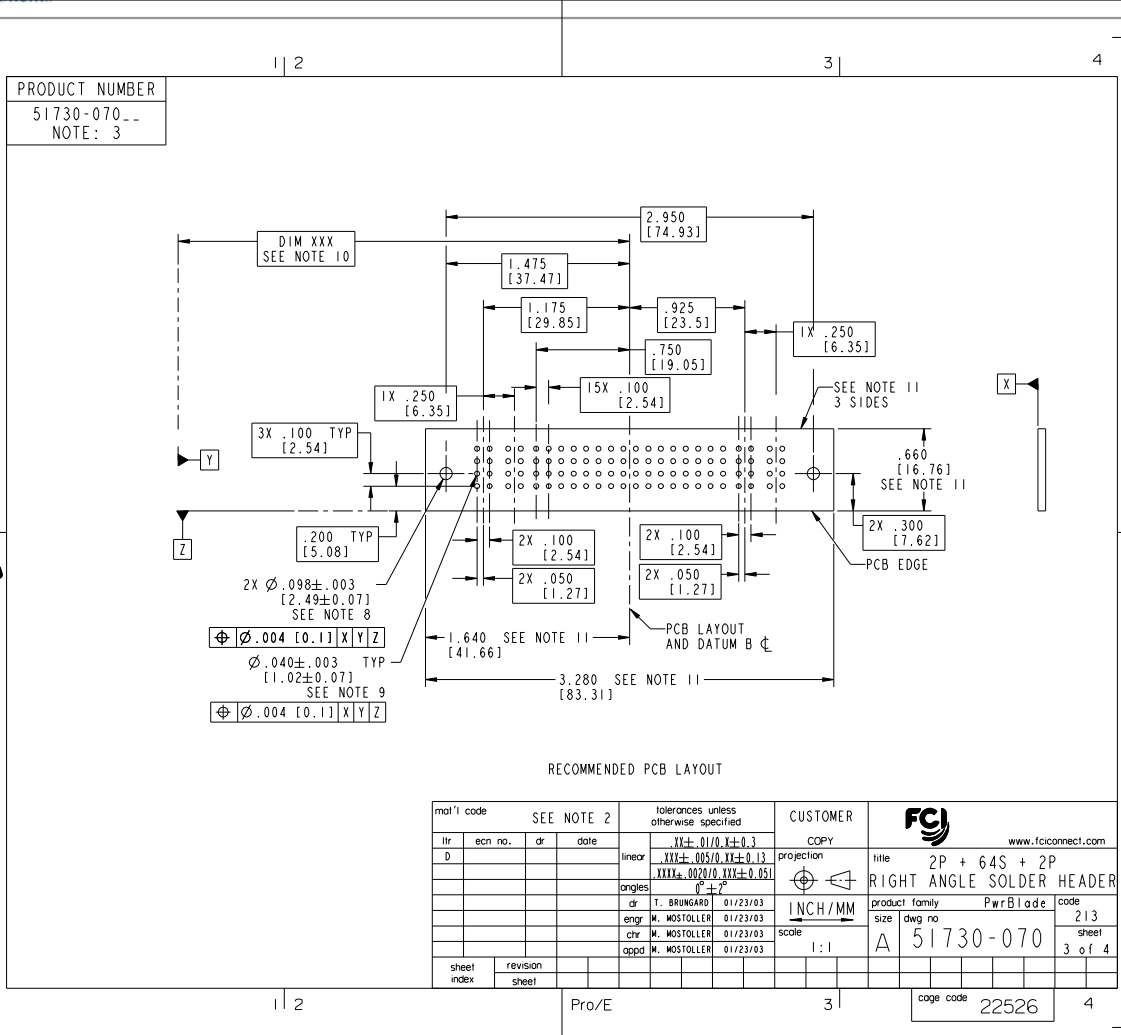
code code

22526

Tous droits strictement réservés. Reproduction ou communication, en des lieux interdite sans aucune forme que ce soit sans autorisation écrite du propriétaire. Propriété de c FCI. Droits de reproduction FCI.



All rights strictly reserved. Reproduction or issue in any form anywhere is not permitted without written authority from the proprietor. Property of FCI. Copyright FCI.



RECOMMENDED PCB LAYOUT

mat'l code		SEE NOTE 2	tolerances unless otherwise specified	CUSTOMER	
ltr	ecm no.	dr	date	www.fciconnect.com	
D				linear	projection
				angles	INCH/MM
				dr	scale
				enr	1:1
				chr	
				appd	
sheet index	revision sheet				

title	2P + 64S + 2P RIGHT ANGLE SOLDER HEADER
product family	PwrBlade
size	dwg no 51730-070
code	213
sheet	3 of 4

Pro/E	3	4
cage code	22526	

Tous droits strictement réservés. Reproduction ou communication de ces lignes interdite sans autorisation écrite du propriétaire. Propriété de FCI. Droits de reproduction FCI.

All rights strictly reserved. Reproduction or issue in third parties in any form whatever is not permitted without written authority from the proprietor. Property of FCI. Copyright FCI.

PRODUCT NUMBER  
51730-070\_\_  
NOTE: 3

NOTES:

1. DIMENSIONS AND TOLERANCES ARE IN ACCORDANCE WITH ASME Y14.5M, 1994 UNLESS OTHERWISE SPECIFIED.

CONNECTOR NOTES:

- 2. HOUSING MATERIAL: UL 94 V-0 GLASS FILLED HIGH-TEMP THERMOPLASTIC  
POWER CONTACT MATERIAL: COPPER ALLOY  
SIGNAL PIN MATERIAL: COPPER ALLOY
- 3. PLATING:  
SEE ITEM 1 & 2 IN PRINT I0064183 FOR PLATING SPEC OF 51730-070 AND 51730-070LF RESPECTIVELY
- 4. MANUFACTURER'S NAME, P/N, AND DATE CODE TO APPEAR ON THIS SURFACE.
- 5. PRODUCT SPECIFICATION GS-12-149.  
APPLICATION SPECIFICATION BUS-20-067.
- 6. PACKAGED IN TRAYS.
- PCB NOTES:
- 7. ALL HOLE DIAMETERS ARE FINISHED HOLE SIZE.
- 8. MOUNTING HOLES, WHERE APPLICABLE, ARE UNPLATED.
- 9.  $\varnothing .0453 \pm .0010$  [1.151  $\pm$  0.025] DRILLED HOLES PLATED WITH .0003 [0.008] MIN SnPb OVER .001 [0.03] TO .003 [0.08] Cu PLATING TO ACHIEVE  $\varnothing .040 \pm .003$  [1.02  $\pm$  .07] HOLE.
- 10. "DIM XXX" TO BE DETERMINED BY THE CUSTOMER.
- 11. CONNECTOR KEEP-OUT ZONE.
- 12: A  $\triangle$  SYMBOL WILL BE NEXT TO ANY DIMENSION, VIEW, OR NOTE WHICH HAS BEEN MODIFIED WITH CURRENT DRAWING VERSION.

mat'l code		SEE NOTE 2	tolerances unless otherwise specified	CUSTOMER	FCI www.fciconnect.com	
ltr	ecm no.	dr	date	linear	projection	title
D				$XX \pm .01/0$ $XY \pm 0.13$ $XYZ \pm .005/0$ $XYZ \pm 0.051$		2P + 64S + 2P RIGHT ANGLE SOLDER HEADER
				angles		product family PwrBlade code 213
				dr	T. BRUNGARD 01/23/03	size
				enr	M. MOSTOLLER 01/23/03	dwg no
				chr	M. MOSTOLLER 01/23/03	51730-070
				oppd	M. MOSTOLLER 01/23/03	sheet 4 of 4
sheet index	revision sheet				scale 1:1	

cage code 22526