

Excellent Integrated System Limited

Stocking Distributor

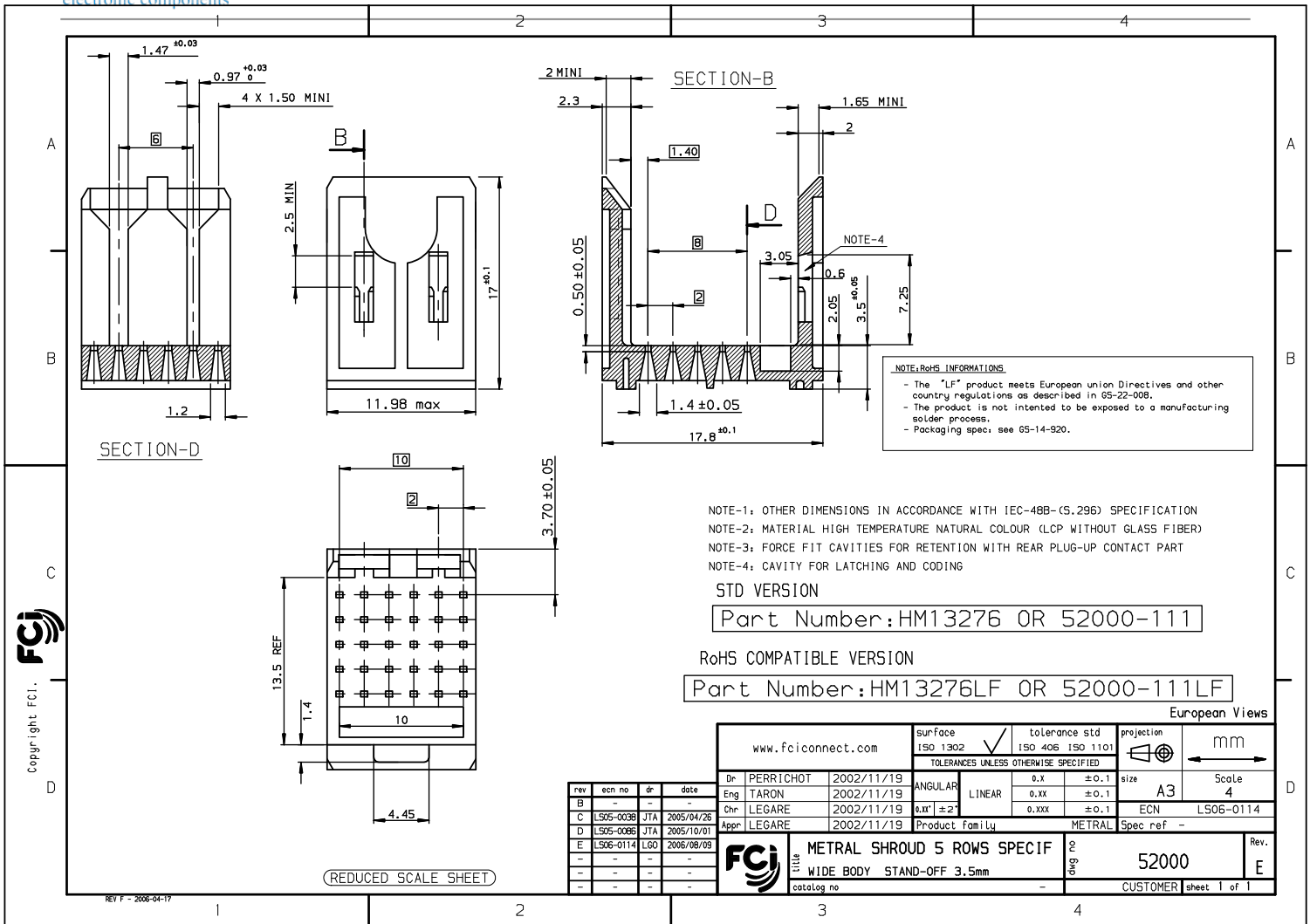
Click to view price, real time Inventory, Delivery & Lifecycle Information:

[FCI](#)

[52000-111LF](#)

For any questions, you can email us directly:

sales@integrated-circuit.com



NOTE:RoHS INFORMATION

- The "LF" product meets European union Directives and other country regulations as described in 05-22-008.
- The product is not intended to be exposed to a manufacturing solder process.
- Packaging spec; see 05-14-920.

NOTE-1: OTHER DIMENSIONS IN ACCORDANCE WITH IEC-488-(5.296) SPECIFICATION
 NOTE-2: MATERIAL HIGH TEMPERATURE NATURAL COLOUR (LCP WITHOUT GLASS FIBER)
 NOTE-3: FORCE FIT CAVITIES FOR RETENTION WITH REAR PLUG-UP CONTACT PART
 NOTE-4: CAVITY FOR LATCHING AND CODING

STD VERSION
Part Number: HM13276 OR 52000-111

RoHS COMPATIBLE VERSION
Part Number: HM13276LF OR 52000-111LF

www.fciconnect.com				surface			tolerance std			projection		
				ISO 1302			ISO 406 ISO 1101			mm		
TOLERANCES UNLESS OTHERWISE SPECIFIED												
Dr	PERRICHOT	2002/11/19	ANGULAR	0.x	±0.1	size	A3		Scale 4			
Eng	TARON	2002/11/19	LINEAR	0.xx	±0.1	ECN	LS06-0114					
Chr	LEGARE	2002/11/19	0.xx	±0.1	Product Family							
Appr	LEGARE	2002/11/19	METRAL			Spec ref -						
FCI				METRAL SHROUD 5 ROWS SPECIF				52000		Rev. E		
catalog no				WIDE BODY STAND-OFF 3.5mm				CUSTOMER		sheet 1 of 1		

Copyright FCI.

REV F - 2006-04-17