

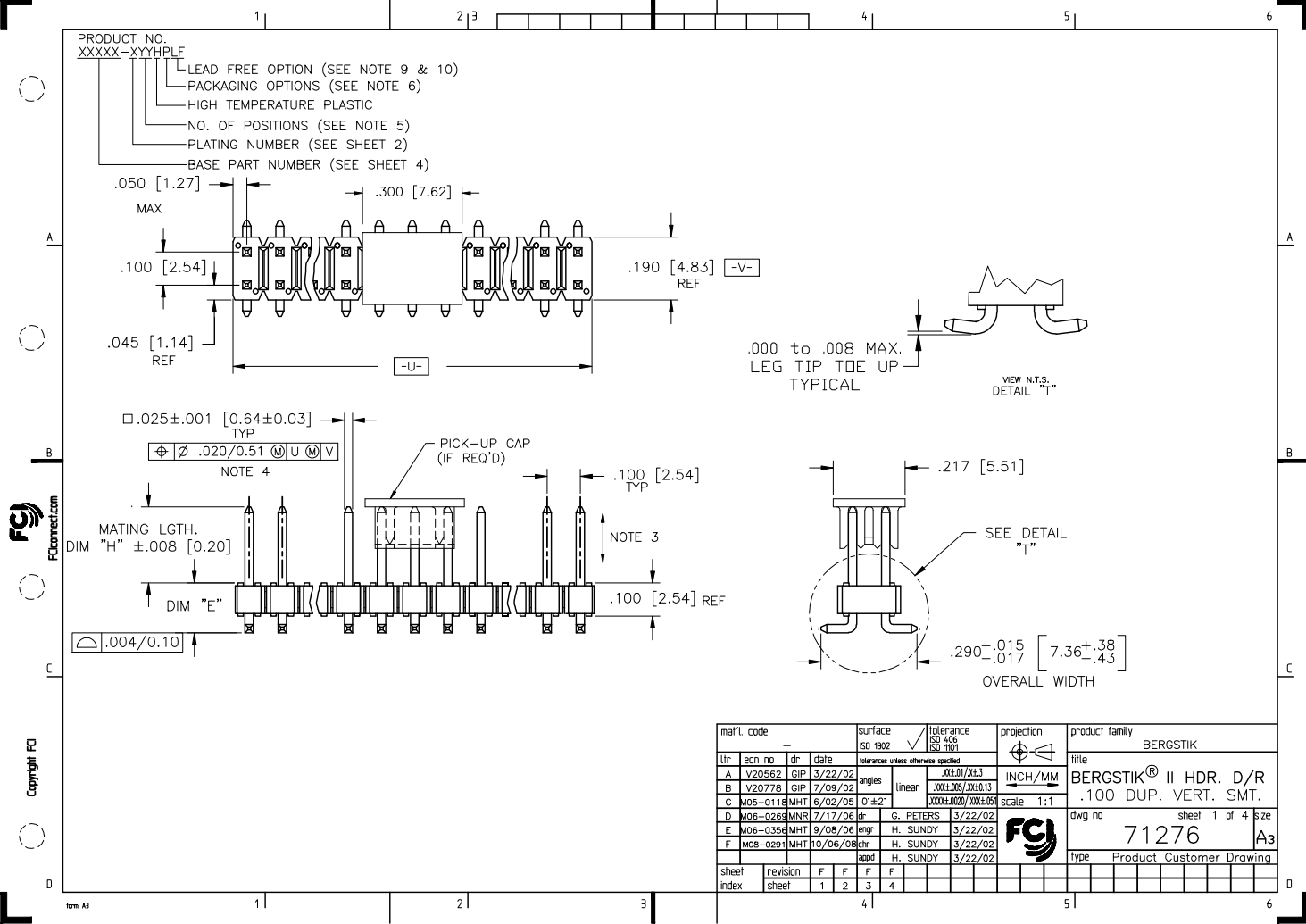
Excellent Integrated System Limited

Stocking Distributor

Click to view price, real time Inventory, Delivery & Lifecycle Information:

[FCI](#)
[71277-240H](#)

For any questions, you can email us directly:
sales@integrated-circuit.com



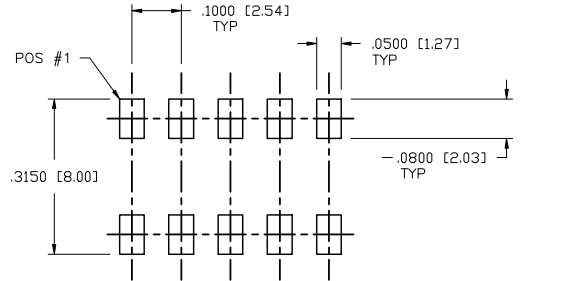
PRODUCT NUMBER	CONTACT AREA "DIM D" PLATING	TAIL PLATING
XXXXX-1YY	30u"/0.76um Au OVER 50u"/1.27um Ni.	100u"/2.54um Sn OVER 50u"/1.27um Ni.
XXXXX-2YY	15u"/0.38um Au OVER 50u"/1.27um Ni.	100u"/2.54um Sn OVER 50u"/1.27um Ni.
XXXXX-4YY	120u"/3.05um Sn OVER 50u"/1.27um Ni.	100u"/2.54um Sn OVER 50u"/1.27um Ni.
XXXXX-1YYLF	30u"/0.76um Au OVER 50u"/1.27um Ni.	100u"/2.54um Sn OVER 50u"/1.27um Ni.
XXXXX-2YYLF	15u"/0.38um Au OVER 50u"/1.27um Ni.	100u"/2.54um Sn OVER 50u"/1.27um Ni.
XXXXX-4YYLF	120u"/3.05um Sn OVER 50u"/1.27um Ni.	100u"/2.54um Sn OVER 50u"/1.27um Ni.

SEE NOTE 8 & 12

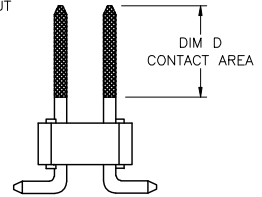
SEE NOTE 8 & 12

NOTES:

- ① BODY MATERIAL: GLASS FIBER REINFORCED PCT FLAME RETARDANT PER UL-94V-0. COLOR: BLACK
OR
MINERAL FILLE LCP FLAME RETARDANT PER UL-94V-0. COLOR: BLACK
- ② PIN MATERIAL: PHOS-BRONZE.
- ③ 2 Lbs / 0.9 Kg MIN PIN RETENTION IN EITHER DIRECTION.
- ④ MEASURED WITH PART IN RESTRAINED CONDITION.
- ⑤ NUMBER OF POSITIONS FROM 4(2X2) THRU 40(2X20) EXCEPT TAPE-ON-REEL AVAILABLE 4(2X2) THRU 34(2X17) ONLY.
- ⑥ PACKAGING OPTIONS: CHECK SPECIFIC PART NUMBERS FOR AVAILABILITY. PART NUMBERS WITHOUT A SUFFIX ARE PACKAGED IN POLY BAGS. PART NUMBERS FOLLOWED BY A "T" SUFFIX ARE PACKAGED IN TUBES. PART NUMBERS FOLLOWED BY A "V" SUFFIX ARE PACKAGED TAPE-ON-REEL WITH A PICK-UP CAP INSTALLED. THE "Z" DIGIT FOLLOWING THE "V" INDICATES CUSTOMER SPECIAL TAPE.
- ⑦ CONTACT MARKETING BEFORE ORDERING ODD POSITION PART NUMBERS (2X3,2X5,2X7,ETC.).
- ⑧ TIN LEAD PLATED PARTS XXXXX-4XXH WILL NOT HAVE PLATING ON TWO SIDES OF THE PIN TIP TYPICAL BOTH ENDS.
- ⑨ PART NUMBER WITH "LF" SUFFIX AT THE END ARE LEAD FREE.
- ⑩ THIS PRODUCT MEETS EUROPEAN UNION DIRECTIVES AND OTHER COUNTRY REGULATION AS DESCRIBED IN GS-22-008.
11. THE HOUSING WILL WITHSTAND EXPOSURE TO 260°C PEAK TEMPERATURE FOR 20 SECONDS IN A CONVECTION, INFRA-RED OR VAPOR PHASE REFLOW OVEN. SEE APPLICATION NOTES/PROCEDURES IF THEY ARE AVAILABLE
- ⑫ "THIS PRODUCT HAS 100% PURE TIN PLATING IN THE INTERFACE AND HAS NOT BEEN TESTED FOR WHISKER GROWTH IN ALL INTERCONNECT ENVIRONMENTS."



DOUBLE ROW RECOMMENDED PAD LAYOUT SCALE: 4/1



DOUBLE ROW SMT END VIEW

mat'l. code	surface	tolerance	projection	product family
	ISO 1902	ISO 406	ISO 1101	BERGSTIK
tr	ecm no	dr	date	title
F				BERGSTIK® II HDR. D/R
				.100 DUP. VERT. SMT.
				dwg no
				71276
				sheet 2 of 4 size
				A3
				Type Product Customer Drawing
sheet index	revision sheet			

