

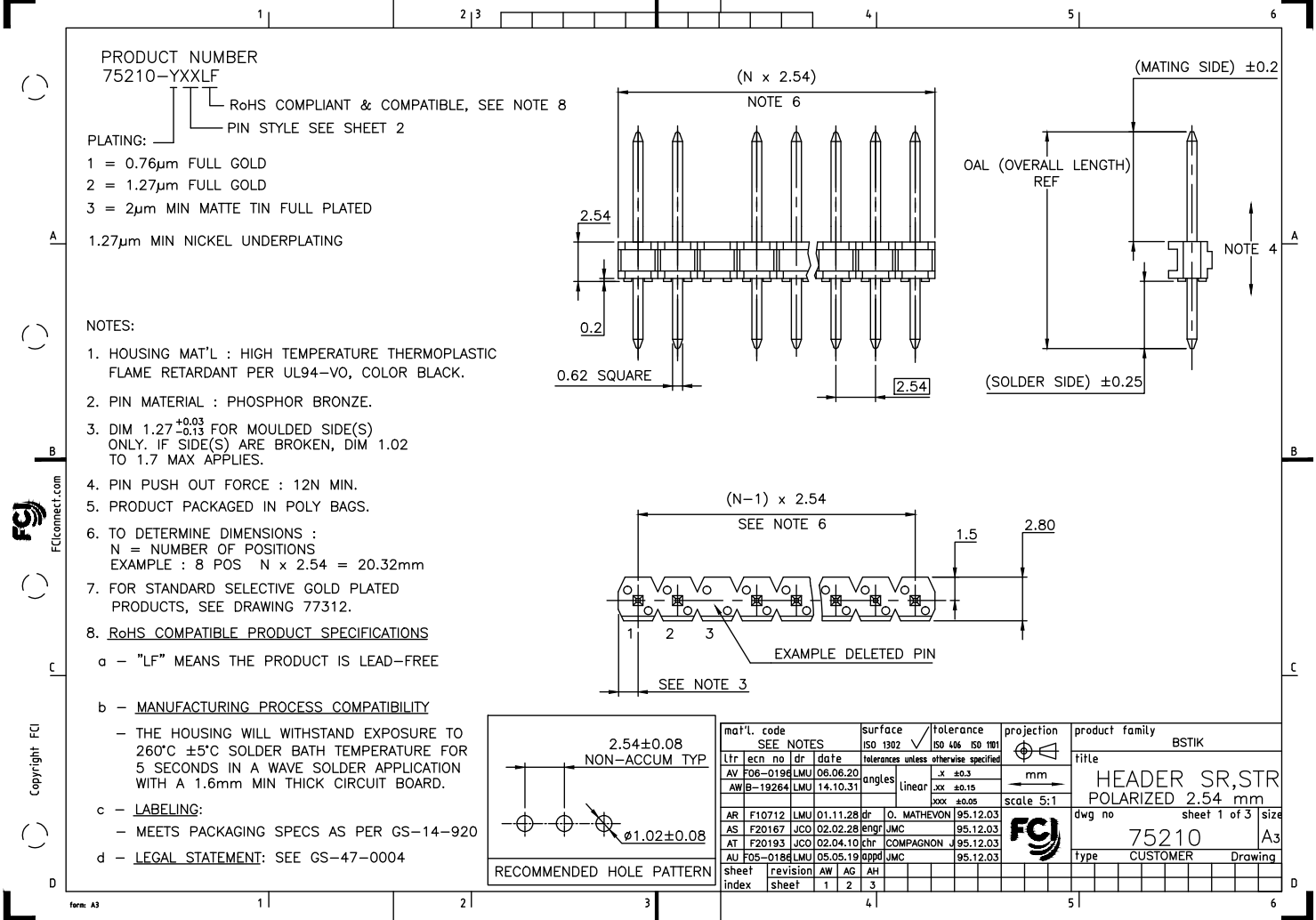
Excellent Integrated System Limited

Stocking Distributor

Click to view price, real time Inventory, Delivery & Lifecycle Information:

[FCI](#)
[75210-286](#)

For any questions, you can email us directly:
sales@integrated-circuit.com



PRODUCT NUMBER
75210-YXXLF

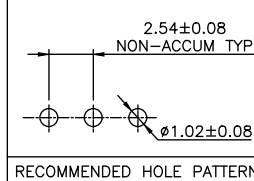
RoHS COMPLIANT & COMPATIBLE, SEE NOTE 8
PIN STYLE SEE SHEET 2

PLATING:

- 1 = 0.76µm FULL GOLD
- 2 = 1.27µm FULL GOLD
- 3 = 2µm MIN MATTE TIN FULL PLATED
- 1.27µm MIN NICKEL UNDERPLATING

NOTES:

1. HOUSING MAT'L : HIGH TEMPERATURE THERMOPLASTIC FLAME RETARDANT PER UL94-V0, COLOR BLACK.
2. PIN MATERIAL : PHOSPHOR BRONZE.
3. DIM 1.27^{+0.03}-0.13 FOR MOULDED SIDE(S) ONLY. IF SIDE(S) ARE BROKEN, DIM 1.02 TO 1.7 MAX APPLIES.
4. PIN PUSH OUT FORCE : 12N MIN.
5. PRODUCT PACKAGED IN POLY BAGS.
6. TO DETERMINE DIMENSIONS :
N = NUMBER OF POSITIONS
EXAMPLE : 8 POS N x 2.54 = 20.32mm
7. FOR STANDARD SELECTIVE GOLD PLATED PRODUCTS, SEE DRAWING 77312.
8. RoHS COMPATIBLE PRODUCT SPECIFICATIONS
 - a - "LF" MEANS THE PRODUCT IS LEAD-FREE
 - b - MANUFACTURING PROCESS COMPATIBILITY
 - THE HOUSING WILL WITHSTAND EXPOSURE TO 260°C ±5°C SOLDER BATH TEMPERATURE FOR 5 SECONDS IN A WAVE SOLDER APPLICATION WITH A 1.6mm MIN THICK CIRCUIT BOARD.
 - c - LABELING:
 - MEETS PACKAGING SPECS AS PER GS-14-920
 - d - LEGAL STATEMENT: SEE GS-47-0004

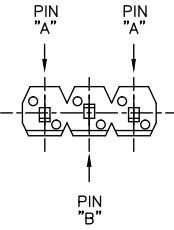
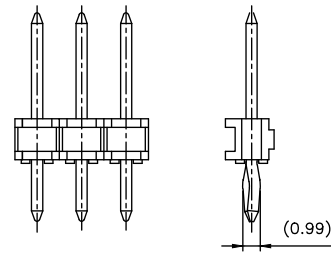


mat'l. code	surface	tolerance	projection	product family
SEE NOTES	ISO 1302	ISO 406 ISO 1101		BSTIK
Ltr ecn no dr date	tolerances unless otherwise specified		mm	Title
AV F06-0196LMU 06.06.20	angles	.x ±0.3	mm	HEADER SR,STR
AW B-19264 LMU 14.10.31	linear	.xx ±0.15	mm	POLARIZED 2.54 mm
		xxx ±0.05	scale 5:1	dwg no sheet 1 of 3 size
AR F10712 LMU 01.11.28 dr O. MATHEVON 95.12.03				75210 A3
AS F20167 JCO 02.02.28 engr JMC 95.12.03				type CUSTOMER Drawing
AT F20193 JCO 02.04.10 chr COMPAGNON J 95.12.03				
AU F05-0186 LMU 05.05.19 appd JMC 95.12.03				
sheet index	revision	AW AG AH		
1	1 2 3			

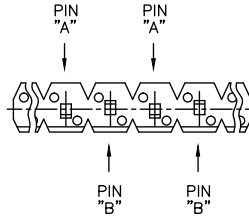
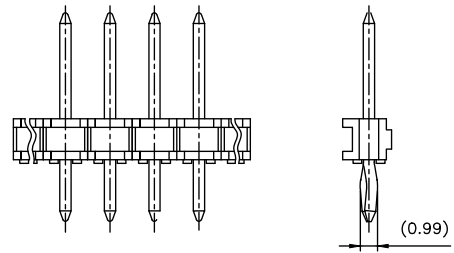
PIN STYLE	PRODUCT DEFINITION				BOTTOM VIEW OF HEADER SHOWING DELETED PIN POSITIONS								STAND OFFS SIDE
	NB OF POS	"A" ±0.2	"B" ±0.35	OAL REF	1	5	10	15	20	25	30	35	
02	1x8	5.84	3.43	11.81									
16	1x18	5.84	3.43	11.81									
23	1x13	5.84	3.43	11.81									
25	1x4	5.84	3.43	11.81									
48	1x4	5.72	3.05	11.3									
57	1x4	5.72	2.77	11.03									
63	1x9	5.9	3.05	11.5									
64	1x6	5.9	3.05	11.5									
66	1x13	5.9	3.05	11.5									
69	1x8	5.72	2.54	10.8									
76	1x5	5.92	1.7	10.16									
77	1x3	6.85	2.9	12.29									
78	1x11	6.85	2.9	12.29									
80	1x13	7.05	2.70	12.29									
81	1x4	5.72	3.05	11.3									
83	1x6	5.72	3.05	11.3									
84	1x5	5.72	3.05	11.3									
85	1x6	5.72	3.05	11.3									

mat'l. code		surface		tolerance		projection		product family	
		ISO 1302		ISO 406 ISO 1101				BSTIK	
ltr ecn no dr date		tolerances unless otherwise specified		angles		mm		title	
AE F30524 JMC 93.06.21				linear		scale 1:1		HEADER SR,STR	
AF F05-0186 LMU 05.05.19								POLARIZED 2.54 mm	
AG F06-0196 LMU 06.06.20								dwg no 75210 sheet 2 of 3 size A3	
		dr L.MULIN 05.05.19		eng MPAGNON 05.05.19				type CUSTOMER Drawing	
		chr		appd J.M.C 05.05.19					
sheet index		revision sheet							

3 PIN CONFIGURATION USED
ON 3 POSITIONS HEADER



4 PIN CONFIGURATION USED
ON 4 TO 36 POSITIONS HEADER



NOTES:
R = INDICATES A RETENTION.
T = PACKAGING IN TUBE PER SPAF0340
IF BOTH FEATURES ARE REQUIRED, "T" WILL APPEAR
HERE, AND "R" WILL APPEAR IN THE POSITION OF THE
FIRST DASH(INDICATED BY FIRST ARROW).

- 1 - PART NUMBER 75210-XXX LF
- 2 - PINS "A" AND "B" USED FOR RETENTION.
- 3 - DIRECTION OF RETENTION SHOWN BY ARROWS.
- 5 - ON 4 TO 36 POSITIONS HEADER; RETENTION IS IN MID POSITION OF HEADER(4 CENTRAL PINS)
- 6 - FOR RETENTION OPTION , SOLDER TAIL LENGTH TO BE 2.9 MIN UP TO 3.5 MAX.

mat'l. code		surface		tolerance		projection		product family	
		ISO 1302		ISO 406 ISO 1101		mm		BSTIK	
Ltr		ecn no		date		tolerances unless otherwise specified		title	
AE		F30524		JMC 93.06.21		angles linear		HEADER SR,STR	
AF		F05-0186		LMU 05.05.19		mm		POLARIZED 2.54 mm	
AG		F06-0196		LMU 06.06.20		scale 1:1		dwg no sheet 3 of 3 size	
AH		B-19264		LMU 14.10.31		L.MULIN 05.05.19		75210 A3	
						MPAGNON 05.05.19		type CUSTOMER Drawing	
						chr			
						appd J.M.C 05.05.19			
sheet index		revision sheet							