

Excellent Integrated System Limited

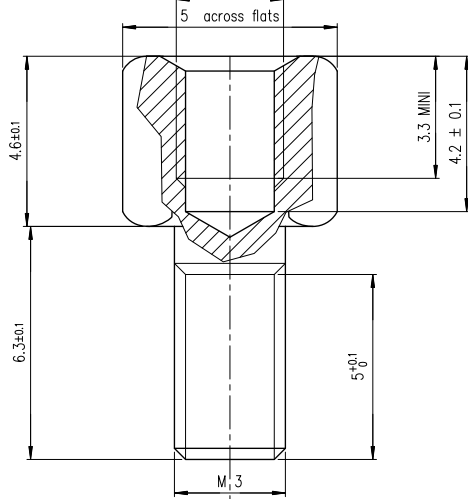
Stocking Distributor

Click to view price, real time Inventory, Delivery & Lifecycle Information:

[FCI](#)
[863001017](#)

For any questions, you can email us directly:
sales@integrated-circuit.com

INTERNAL THREAD UNC 4.40



TECHNICAL CHARACTERISTICS :

- Female screw locks: brass, cadmium plated .
- Compensating washer: steel , zinc plated .
- Nuts : steel , zinc plated .
- Packaging : per 100 pieces .
- Corrosion resistance : 48 hours exposure to salt spray .



Part number **863001017**

Copyright FCI

D

0

5

10

MM

1

2

3

4

REV F - 2006-04-17

1

2

3

4

5

6

7

8

9

10

11

12

13

14

15

16

17

18

19

20

21

22

23

24

25

26

27

28

29

30

31

32

33

34

35

36

37

38

39

40

41

42

43

44

45

46

47

48

49

50

51

52

53

54

55

56

57

58

59

60

61

62

63

64

65

66

67

68

69

70

71

72

73

74

75

76

77

78

79

80

81

82

83

84

85

86

87

88

89

90

91

92

93

94

95

96

97

98

99

100

rev	ecn no	dr	date
A	-	JOU	1994/12/12
B	LS06-0097	LGO	2006/07/28
C	LS07-0001	MPE	2007/01/02
D	LS09-0006	PCR	2009/01/08
E	LS09-0063	PCR	2009/03/25
F	I11-0022	AMR	2011/01/25
-	-	-	-

www.fciconnect.com		surface ISO 1302	tolerance std ISO 406 ISO 1101	projection mm
TOLERANCES UNLESS OTHERWISE SPECIFIED				
Dr	JOUBERT	1994/12/12	ANGULAR	0.X ±0.1
Eng	PESSON	1994/12/12	LINEAR	0.XX ±0.1
Chr	ABHILASH	2011/01/25	0.XX ±2°	0.XXX ±0.1
Appr	SUDHIR	2011/01/25	Product family	size A3
D-SUB				Scale 10
Spec ref -				ECN I11-0022
Title FEMALE SCREW LOCKS			Rev. F	
D SUB ACCESSORIES			chg no C01-8655-0660	
catalog no -			CUSTOMER	sheet 1 of 1