



**Distributor of FCI: Excellent Integrated System Limited**

Datasheet of 71966-303LF - Connector Receptacle 34 Position 0.100" (2.54mm) Gold Through Hole

Contact us: [sales@integrated-circuit.com](mailto:sales@integrated-circuit.com) Website: [www.integrated-circuit.com](http://www.integrated-circuit.com)

---

## **Excellent Integrated System Limited**

Stocking Distributor

Click to view price, real time Inventory, Delivery & Lifecycle Information:

[FCI](#)

[71966-303LF](#)

For any questions, you can email us directly:

[sales@integrated-circuit.com](mailto:sales@integrated-circuit.com)

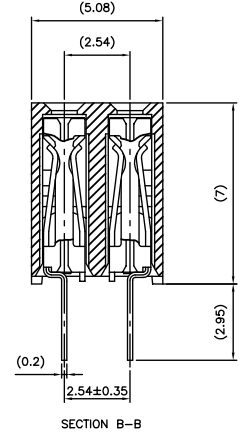
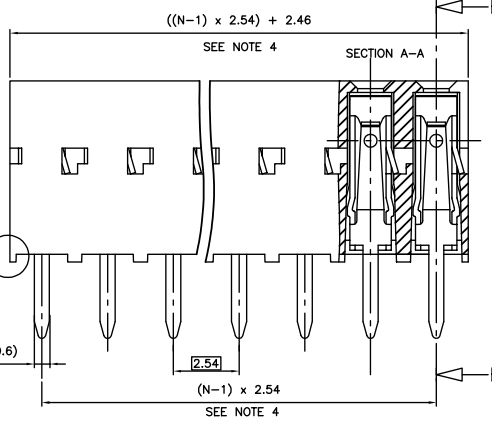
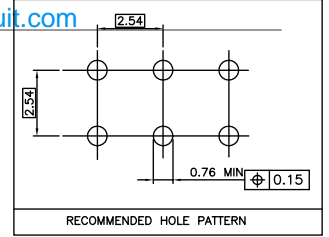
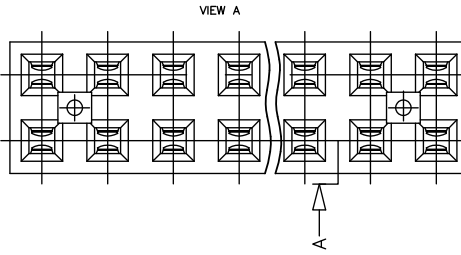
Contact us: sales@integrated-circuit.com Website: www.integrated-circuit.com

| PRODUCT NUMBER | HOUSING NB OF POS | CONTACT PLACED IN CAVITY ( TABLE ACCORDING VIEW A ) |   |   |   |   |   |   |   |   |    |    |    |    |    |    |    |    |    |    |    |    |    |    |    |    |    |    |    |    |    |    |    |   |   |   |
|----------------|-------------------|---|---|---|---|---|---|---|---|---|----|----|----|----|----|----|----|----|----|----|----|----|----|----|----|----|----|----|----|----|----|----|----|---|---|---|
|                |                   | 1   | 2 | 3 | 4 | 5 | 6 | 7 | 8 | 9 | 10 | 11 | 12 | 13 | 14 | 15 | 16 | 17 | 18 | 19 | 20 | 21 | 22 | 23 | 24 | 25 | 26 | 27 | 28 | 29 | 30 | 31 | 32 |   |   |   |
| 71966-Y01LF    | 2 X 32            | X   | X | X | X |   |   |   |   |   |    |    | X  | X  | X  | X  | X  | X  | X  | X  | X  | X  | X  | X  | X  | X  | X  | X  | X  | X  | X  | X  | X  | X | X | X |
| 71966-Y02LF    | 2 X 12            | X   | X | X | X | X | X | X | X | X | X  | X  | X  |    |    |    |    |    |    |    |    |    |    |    |    |    |    |    |    |    |    |    |    |   |   |   |
| 71966-Y03LF    | 2 X 17            | X   | X | X | X | X | X | X | X | X | X  | X  | X  | X  | X  | X  | X  | X  | X  | X  | X  | X  | X  | X  | X  | X  | X  | X  | X  | X  | X  | X  | X  | X | X |   |
| 71966-Y04LF    | 2 X 17            | X   | X | X | X | X | X | X | X | X | X  | X  | X  | X  | X  | X  | X  | X  | X  | X  | X  | X  | X  | X  | X  | X  | X  | X  | X  | X  | X  | X  | X  | X | X |   |
| 71966-Y05LF    | 2 X 17            | X   | X | X | X | X | X | X | X | X | X  | X  | X  | X  | X  | X  | X  | X  | X  | X  | X  | X  | X  | X  | X  | X  | X  | X  | X  | X  | X  | X  | X  | X | X |   |
| 71966-Y06LF    | 2 X 14            | X   | X | X | X | X | X | X | X | X | X  | X  | X  | X  | X  | X  | X  | X  | X  | X  | X  | X  | X  | X  | X  | X  | X  | X  | X  | X  | X  | X  | X  | X | X |   |
| 71966-Y07LF    | 2 X 18            | X   | X | X | X | X | X | X | X | X | X  | X  | X  | X  | X  | X  | X  | X  | X  | X  | X  | X  | X  | X  | X  | X  | X  | X  | X  | X  | X  | X  | X  | X | X |   |
| 71966-Y08LF    | 2 X 18            | X   | X | X | X | X | X | X | X | X | X  | X  | X  | X  | X  | X  | X  | X  | X  | X  | X  | X  | X  | X  | X  | X  | X  | X  | X  | X  | X  | X  | X  | X | X |   |
| 71966-Y09LF    | 2 X 19            | X   | X | X | X | X | X | X | X | X | X  | X  | X  | X  | X  | X  | X  | X  | X  | X  | X  | X  | X  | X  | X  | X  | X  | X  | X  | X  | X  | X  | X  | X | X |   |
| 71966-Y10LF    | 2 X 05            | X   | X | X | X | X | X | X | X | X | X  | X  | X  | X  | X  | X  | X  | X  | X  | X  | X  | X  | X  | X  | X  | X  | X  | X  | X  | X  | X  | X  | X  | X | X |   |

RoHS COMPATIBLE, SEE NOTE 5

**NOTES :**

- MATERIAL HOUSING: THERMOPLASTIC POLYESTER 30% GLASS FILLED COLOUR BLUE. FLAME RETARDANT PER UL-94 CATEGORY V0.
- MATERIAL TERMINAL: PHOSPHOR BRONZE EXTRA HARD.
- PRODUCT PACKAGED IN TUBES
- TO DETERMINE DIMENSIONS : N = NUMBER OF POSITIONS PER ROW  
EXAMPLE : 8 POS N x 2.54 = 20.32mm
- RoHS COMPATIBLE PRODUCT SPECIFICATIONS
  - a - PLATING:
    - "LF" MEANS THE PRODUCT IS LEAD-FREE, 2µm MINIMUM MATTE TIN OVER 1.27µm MINIMUM NICKEL UNDERPLATE.
  - b - MANUFACTURING PROCESS COMPATIBILITY
    - THE HOUSING WILL WITHSTAND EXPOSURE TO 260°C ±5°C SOLDER BATH TEMPERATURE FOR 5 SECONDS IN A WAVE SOLDER APPLICATION WITH A 1.6mm MIN THICK CIRCUIT BOARD.
  - c - LABELING:
    - MEETS PACKAGING SPECS AS PER GS-14-920
    - LEGAL STATEMENT: SEE GS-47-0004
- END STAND-OFFS FOR 2x2 UP TO 2x4 POS  
NO END STAND-OFFS FOR 2x5 UP TO 2x50 POS



|              |                                  |             |
|--------------|----------------------------------|-------------|
| 71966-4XXLF  | 5µm Sn                           | Sn          |
| 71966-3XXLF  | 0.76 µm GOLD                     | Sn          |
| PLATING CODE | CONTACT AREA                     | SOLDER TAIL |
|              | PLATING THICKNESS OVER 1.27µm Ni |             |

|            |          |                   |            |                                       |
|------------|----------|-------------------|------------|---------------------------------------|
| mat'l code | surface  | tolerance         | projection | product family                        |
| SEE NOTES  | ISO 1902 | ISO 446 (ISO 191) | DX VCC DR  |                                       |
| itr        | ecn no   | dr                | date       | tolerances unless otherwise specified |
| J          | F11-0079 | LMU               | 11.06.10   | mm                                    |
| K          | F12-0014 | SPH               | 12.02.01   | angles                                |
| L          | B-17193  | LMU               | 14.03.11   | linear                                |
| M          | B17352   | LMU               | 14.03.11   | scale 10:1                            |
| N          | B-19123  | LMU               | 14.10.21   | dr                                    |
| P          | B-19232  | LMU               | 14.10.28   | dr                                    |
| R          | F-24429  | AMA               | 16.07.01   | dr                                    |
| sheet      | revision | sheet             | date       | scale                                 |
| index      | sheet    | sheet             | date       | scale                                 |

**TOP ENTRY**  
**SELECTED LOADED**

71966  
sheet 1 of 1  
A2  
CUSTOMER Drawing