

## Excellent Integrated System Limited

Stocking Distributor

Click to view price, real time Inventory, Delivery & Lifecycle Information:

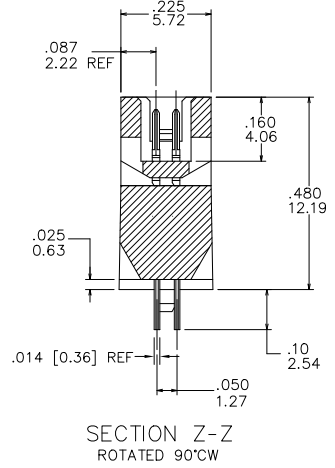
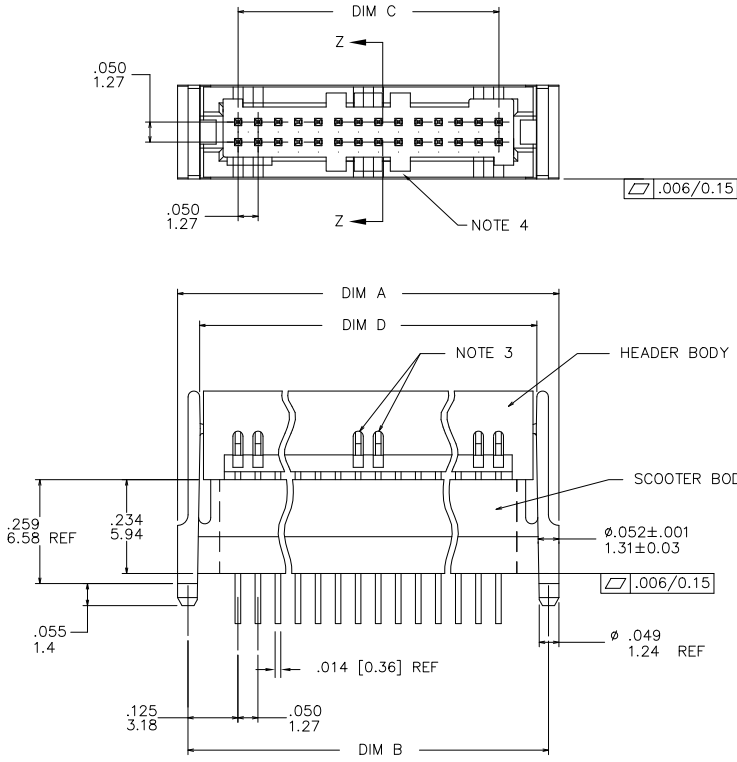
[FCI](#)

[87434-120LF](#)

For any questions, you can email us directly:

[sales@integrated-circuit.com](mailto:sales@integrated-circuit.com)

PRODUCT NUMBER  
SEE TABLE



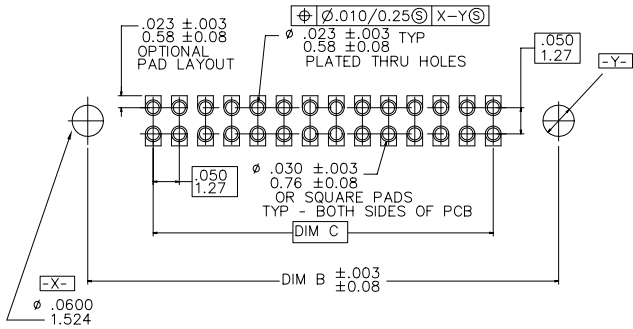
|            |            |                     |            |                          |
|------------|------------|---------------------|------------|--------------------------|
| matl. code | surface    | tolerance           | projection | product family           |
| -          | ISO 1302 ✓ | ISO 406<br>ISO 1101 | ISO 10     | RIBCAGE                  |
| ltr        | ecn no     | dr                  | date       | title                    |
| K          | V61605     | DLW                 | 12/14/00   | SCOOTER 1 ASSEMBLY       |
| L          | V02780     | DLW                 | 3/9/01     |                          |
| M          | M05-0123   | ERE                 | 06/07/05   | scale 3:1                |
| N          | M06-0225   | ERE                 | 06/12/06   | J. SHREINER 12/14/90     |
| P          | M06-0370   | MHT                 | 9/26/06    | engr C. TREXLER 12/14/90 |
| R          | M09-0058   | CMR                 | 4/06/09    | chr C. TREXLER 12/14/90  |
| S          | EX-N-00984 | YO                  | 1/30/12    | appd C. TREXLER 12/14/90 |
| sheet      | revision   | S                   | S          |                          |
| index      | sheet      | 1                   | 2          |                          |

4 PDS: Rev :S STATUS: released Printed: Feb 17, 2012

| PRODUCT NUMBER<br>NOTE 5 | NO OF POS | DIM A       | DIM B       | DIM C       | DIM D       |
|--------------------------|-----------|-------------|-------------|-------------|-------------|
| 87434-115                | 30        | 1.000/25.40 | .950/24.13  | .700/17.78  | .890/22.61  |
| -120                     | 40        | 1.250/31.75 | 1.200/30.48 | .950/24.13  | 1.140/28.96 |
| -125                     | 50        | 1.500/38.10 | 1.450/36.83 | 1.200/30.48 | 1.390/35.31 |
| -130                     | 60        | 1.750/44.45 | 1.700/43.18 | 1.450/36.83 | 1.640/41.66 |
| -135                     | 70        | 2.000/50.80 | 1.950/49.53 | 1.700/43.18 | 1.890/48.01 |
| -140                     | 80        | 2.250/57.15 | 2.200/55.88 | 1.950/49.53 | 2.140/54.36 |
| -145                     | 90        | 2.500/63.50 | 2.450/62.23 | 2.200/55.88 | 2.390/60.71 |
| 87434-150                | 100       | 2.750/69.85 | 2.700/68.58 | 2.450/62.23 | 2.640/67.06 |

NOTES:

- TERMINAL PLATING:  
CONTACT ZONES:  
30u"/.76u MIN HARD GOLD OR GXT OVER 50u"/1.27u Ni ON CONTACT ZONES.  
100u"/2.54u MIN Sn OVER 50u"/1.27u Ni IN SOLDERING ZONES.
- HEADER BODY: GLASS FILLED THERMOPLASTIC FLAME  
RETARDANT PER UL 94 V-0.  
COLOR: NATURAL  
HEAT DEFLECTION TEMP - 500°F  
SCOOTER BODY: GLASS FILLED THERMOPLASTIC FLAME  
RETARDANT PER UL 94V-0.  
COLOR: NATURAL  
HEAT DEFLECTION TEMP @ 264 PSI - 466°F(241°C)  
PER ASTM TEST NO D64B.
- ADDITIONAL CORING IN CENTER MANUFACTURING OPTION.
- MOLDING FLOW RESTRICTERS QUANTITY AND LOCATION IS MANUFACTURING OPTION.
- ADD "LF" SUFFIX AT THE END OF PART NUMBER FOR LEAD FREE OPTION.
- THIS PRODUCT MEETS EUROPEAN UNION DIRECTIVES AND OTHER COUNTRY REGULATION AS DESCRIBED IN GS-22-008.
- THE HOUSING WILL WITHSTAND EXPOSURE TO 260° PEAK TEMPERATURE FOR 15 SECONDS IN A WAVE SOLDER APPLICATION WITH A 1.5mm MINIMUM THICK CIRCUIT BOARD. SEE APPLICATION NOTES/PROCEDURES IF THEY ARE AVAILABLE.
- PRODUCT SPEC PER BUS-12-087.



RECOMMENDED P.C.B. LAYOUT  
SCALE 4/1

|                                       |                |                     |                               |                |
|---------------------------------------|----------------|---------------------|-------------------------------|----------------|
| matl. code                            | surface        | tolerance           | projection                    | product family |
| -                                     | ISO 1302 ✓     | ISO 406<br>ISO 1101 |                               | RIBCAGE        |
| ltr                                   | ecn            | no                  | dr                            | date           |
| S                                     |                |                     |                               |                |
| tolerances unless otherwise specified |                | linear              |                               |                |
| angles                                | linear         | .001/0.3            | INCH/MM                       |                |
| 0.0125                                | linear         | .002/0.05/0.13      | scale 3:1                     |                |
| dr                                    | J. SHREINER    | 12/14/90            | FCI                           |                |
| engr                                  | C. TREXLER     | 12/14/90            | sheet 2 of 2 size             |                |
| chr                                   | C. TREXLER     | 12/14/90            | 87434 A3                      |                |
| appd                                  | C. TREXLER     | 12/14/90            | type Product Customer Drawing |                |
| sheet index                           | revision sheet |                     |                               |                |

4 PDS: Rev :S

STATUS: released

Printed: Feb 17, 2012